

ENFORD NEWSLETTER

*What's happening In and Around East and West Chishenbury,
Compton, Coombe, Enford, Fifield, New Buildings & Newtown*

Photographic Competition: Photographer Craig Fisher.



May 2026



www.enfordnewsletter.org

enfordnewsletter@gmail.com

May			June	
Tues	5th	Mixed dry recycling	Tues	2nd
Wed	6th	Garden waste	Wed	3rd
Thurs	14th	Household waste	Thurs	11th
Tues	19th	Mixed dry recycling	Tues	16th
Wed	20th	Garden waste	Wed	17th
Thurs	28th	Household waste	Thurs	25th
		Mixed dry recycling	Tues	30th

All dates are taken from the Wiltshire Council website and are accurate to the best of our knowledge.

Further information is available at

www.wiltshire.gov.uk/rubbish-and-recycling

Dates of note in this edition...

May

Tuesday 5th	Parish Council AGM
Tuesday 5th	Pewsey Arts Lecture
Wednes 6th	Drop in for Fete information
Thursday 7th	Brews in the Pews
Tuesday 12th	Gardening Club
Saturday 16th	Irish music @ The Swan
Tuesday 26th	Film evening

CONTENTS

**The Newsletter deadline is
Wednesday
20th May**

Waste Collection/ Dates of Note	2
Contents/Destruction	3
Church team message	4
Church Services/EPC AGM	5
Village Hall Activities	6
Gardening Club	7
Film Night	8
Enford Fete	9
Help for Open Gardens	10
Priory gardens/Open Mic	11
Photography Competition	12
Curlews/Walk for Life	13
Great Bustard Group	14
Recipe of the Month	15
Swan update/Pewsey Arts	16
Brews in Pews/ Bingo	17
ECFund/Parish Council Meetings	18
Local Support & Information	19/20
Police & Crime C/ Stars	21
Advertising	22-33
Village Committees	34
Useful Numbers	35
A volunteer's perspective	36

Emails are preferred with editable attachments, Word documents, so that we can fit them to the available space.

enfordnewsletter@gmail.com

All items, however they are submitted, must be with us by the deadline and signed. We will withhold the author's name if requested.

Enford Newsletter Committee reserves the right to reject or omit from publication any material considered by a majority of Committee Members to be detrimental to any person; not in the best interests of the community as a whole or inappropriate for this medium.



It was so sad to see the wanton destruction of the memorial bench put up in the village by Nicki Young. Though it was heartening to see the response of the community when it was posted on to the Enford Facebook page. There were so many offers of help and support.



Thoughts from Rev. Philip Bromiley

May Day, May Day

The month of May always brings memories of Oxford days. At Magdalen bridge, amidst choirs and all-night revelers. In all honesty, I only ever did it once, out of sheer curiosity, it was fun, but I couldn't justify the sacrifice of sleep deprivation. Back in the day, it was common to see brave souls (often assisted by Dutch courage) leap off the bridge into the river Cherwell below. Injuries often followed and the leap was banned in 2005. Sadly, the water is just too shallow. What does the choir sing from the bell tower? A hymn entitled Hymnus Eucharisticus - this is the translation:

*We worship you, O God the Father,
we offer you our praise,
for you nourish our bodies,
and minds with heavenly grace.*

*To you, Eternal Spirit
by whose breath was born
by Mary the Infant God,
be our eternal blessings.*

*We adore you, O Jesus,
you, the only begotten Son,
you, who did not disdain
to submit to birth in the Virgin's womb.*

*Triune God, of all humanity
the great author of salvation,
this immense mystery
our tongues all cheer and sing.*

*Driven onto the cross, you were made
the victim of God's wrath.
Through you, our only Saviour,
hope of life returned to us.*

This amazing hymn proclaims the wonder of Father, Son and Holy Spirit. The philosopher, Søren Kierkegaard coined the term, "leap of faith". He didn't say we have to blindly jump off a bridge, but rather, when we jump off, we do so trusting that God, in His goodness, will be there. Jesus is far enough away for us to freely choose to jump. He is also near enough though to catch us when we fall.

For more information about the Avon River Team Churches contact:

The Team Office: 01980 655457 www.avonriverteam.org.uk
Rev. Philip Bromiley: 01980 258549 or philip@avonriverteam.org.uk



ENFORD CHURCH SERVICES



May

Sunday 5th	9:30am	Easter Day Holy Communion
Sunday 12th	10:30am	Team Service ~ Figheldean
Sunday 19th	9:30am	Breakfast Church
Sunday 26th	6:00pm	Evensong

June

Sunday 7th	9:30am	Holy Communion
Sunday 14th	10:30am	Team Service
Sunday 21st	9:30am	Breakfast Church
Sunday 28th	6:00pm	Evensong

Don't forget that if you would prefer to worship quietly in your own home, we have a short Compline Service at 8pm each Sunday... a wonderful way to end the week and set yourself up for the week ahead. Ask for the link on Facebook or email avonriverteam@hotmail.com

ENFORD PARISH COUNCIL ANNUAL GENERAL MEETING (AGM) 2026

The Parish Council ANNUAL GENERAL MEETING (AGM) will be held on **Tuesday 5th May 2026 at 6.30pm** in the **Village Hall**. This is a closed meeting and its main purpose is to elect a Chairman and Vice Chairman for the coming year and to allocate responsibilities of the Council to any new or existing Councillors.

It will be followed immediately (nominally at 7.30pm) by a normal Parish Council meeting. This meeting is open to the public who may wish to raise any issues or just get 'a taste' of Parish Council business.

Any members of the public who wish to attend or raise a concern are welcome to do so but unless specifically requested by the Chairman to join in discussions, may not take part in the meeting.

Elizabeth Harrison
Clerk, Enford Parish Council



ENFORD VILLAGE HALL & RECREATION GROUND

Private Parties: The Village Hall is the perfect venue for Weddings and Special Anniversaries or Birthdays. It is also ideal for Childrens' Parties and Christenings – or any other excuse for a celebration!

Please contact Booking Officer enfordvillagehall@btinternet.com for information or visit the Village Hall entry on the website www.enfordnewsletter.org

Day	Activity	Time	Contact
Mon	Post Natal Yoga Pregnancy Yoga Yoga	10.30 a.m. to 11.30 a.m. 7.30 p.m. – 8.45 p.m. 6pm - 7pm	Marie Hanley Mob: 07871 302303 email mamawaveyoga@gmail.com Emma Petitt Tel: 01980 670510 emma@petittbros.co.uk
Tues	Enford Film Club	Film information and dates are published in the Newsletter each month.	Theresa Horsey etphorsey@gmail.com or enfordvillagehall@btinternet.com
Tues	Gardening Club	7pm - 9pm 2nd Tuesday in the month. Details in the Newsletter.	Steve Stringer 07899 758222 steve.stringer@outlook.fr Fanny Middleton Tel: 01980 671645 fannysurtees@btinternet.com
Tues	Parish Council	Please check PC item in newsletter each month or PC website for dates.	Parish Clerk Tel: 01980 670034 clerk@enfordparishcouncil.gov.uk www.enfordparishcouncil.gov.uk
Wed	Short Mat Bowls	7pm - 9:30pm September – April	David Spencer Tel: 01980 670526 spencersgb@yahoo.co.uk
Thur	Pilates	9am – 10am	Nicci Caswell Tel: 01980 625245 nicci@thecaswells.uk
Sat	Junior Football Club	Recreation Ground	Vacant

ENFORD GARDENING CLUB



“Herbs to aid the Gardener”

with **Christina Stapley**

Tuesday 12th May 2026

Raffle, Bring and buy plant stall

Tea and coffee

7.00 for 7.15 pm Enford Village Hall

Entrance £5. Everyone Welcome!

Contact steve.stringer@outlook.fr

Tel 07899 758222

Enford Film Evening

TUESDAY 26TH MAY @ ENFORD VILLAGE HALL

The film this month will be;

THE BALLAD OF WALLIS ISLAND

A British comedy drama, starring Carey Mulligan, Tim Key and Tom Basden, (who also wrote and performed the songs in the film). Folk musician, Herb McGwyer is unexpectedly reunited with his ex girlfriend and singing partner, Nell when he is hired to perform on a remote island by eccentric wealthy widower, Charles. Nominated for 3 BAFTA awards, it won 3 British Independent Film awards



Doors open at **6.30** for drinks and nibbles for **7.15** start.

Tickets £8 to include a glass of wine and nibbles!

Please email if you require further information and bookings

enfordvillagehall@btinternet.com

Step Right Up – The Enford Summer Fete Needs You!

The countdown is ON! Enford Summer Fete returns on Saturday 13 June, and it's shaping up to be bigger and better than ever—but we need you to help make the magic happen!

Got an hour or two to spare? Your time could make a huge difference. We're looking for volunteers before, during and after the event, and there are plenty of ways to get involved. Thank you to everyone who's already signed up—you're amazing!

To find out more, come to our **drop-in session** at All Saints Church, Enford on **Wednesday 6 May between 5–8pm**. Come along, meet the team, and discover how you can be part of something special. Can't make it on the day? No problem! Just email or have a chat, with one of the group members below. We'll be sharing more exciting updates in the next newsletter as the Fete gets closer. In the meantime, stay in the loop by following the event on the Enford, Chisenbury and Coombe Facebook page by scanning this QR code.

Finally—help us spread the word! If you can display a poster at your workplace, a local business, or online, we'd love your support. Every bit of promotion helps make this a fantastic community celebration.

Let's make this year's Fete unforgettable!

Carolyn Ansell, Katie Briscoe, Tracy Buttery, Rob Hibberd,
Richard Petitt & Chris Rose Enford Community Fund Email:

EnfordFund@gmail.com



Chisenbury Priory Open Gardens

After years of great organisation and hard work Jeni Scott Dagleish and Fanny Middleton are stepping back from organising the teas for Chisenbury Priory. I would like to take this opportunity to thank them both for everything they have done for many years; The effort has been enormous and much appreciated by so many people. A huge and lasting thank you to you both. Some VERY Big Shoes to fill ...!

The beautiful Chisenbury Priory gardens will be open this year on **Sunday 7th June**. The teas are in aid of Enford Church, and have always proved popular and busy!

This year Amanda Murray, Fi Leakey and myself are taking over the organisation, though as I will be away, Amanda and Fi will be in need of as much help and support as we can muster. We are putting out a request to see who would like to be involved.

The jobs are as follows:

BEFORE THE DAY:

Would you be prepared to bake a cake, make brownies etc for the visitors to the garden to enjoy. In the past the top sellers from the array of deliciousness's are slices of cake, brownies, fruit cake, a few gluten free options, but not cupcakes.

ON THE DAY:

1:45pm - 4.00pm **OR** 4.00pm - 6.00pm

- making tea and coffee washing up
- serving drinks and cakes taking money
- collecting cups etc from the garden

Would you be kind enough to email me, or Amanda to let us know if you are available to help and what you would like to do . Do let us know as soon as possible so we can make the rota. With enough volunteers, no-one will have to do more than 2 1/4 hours

A Welcome to Enford

We would like to extend a very warm welcome to Enford to Sophie and Jess who have just moved in to the village.

Chisenbury Priory Open Garden

By kind invitation of John and Tessa Manser

Sunday 7th June 2026 2.00pm – 6.00pm

Plants to buy and wonderful teas provided
Proceeds from the teas are in aid of **Enford Church**

Would you bake a cake or help on the day?

We need approximately 35 cakes
(gluten-free options too!)

And 20 helpers to make it all run smoothly

If you would like to get involved making a cake
and/or helping on the day please contact

Ruth Wilkinson or Amanda Murray

Ruth Wilkinson
07733 000652

Amanda Murray
0799 057 8712

ruthwilkinson@me.com

amandamurray151@gmail.com

Summer Fete Open Mic

The Summer fete on **13 June 2026** will once again feature the opportunity to perform a musical number in the **Open Mic** tent. You could sing a song, play an instrument or do both at the same time.

Whatever musical skill you possess!

Here's your chance to shine by performing to a live audience in a very relaxed setting as well as being part of the live entertainment for the day.

So start practising now!

Enford Summer Fete Photography Competition

Saturday 13th June 2026

Last year's photo competition was a great success, with an array of interesting, well-composed photographs which were then used to create a calendar showcasing the beauty of the Parish of Enford. This year each winning photograph will be featured in the Enford newsletter rather than in a calendar.

Remember, no fancy camera equipment is required; phone cameras can take great photographs.

On the day of the Fete all submitted photographs will be displayed a public vote will take place throughout the day producing 12 winning photographs

Criteria for submission

Theme: The Parish of Enford, your photograph must feature an aspect of the parish of Enford e.g. a building, landmark, landscape, local fauna or flora taken during the year between **June 2025 and May 2026**.

No human portraits please.

1 photograph submission per person please

All ages of photographers welcome

Size must be A5, which is roughly 5.8 x 8.3 inches.

How to submit

Please submit your photo as a physical copy with your name, email address and phone number on the reverse (to enable display of the photograph for judging at the fete). Digital versions will be required if your photo is chosen for the newsletter.

Photos can be handed directly to Tracy Buttery or in the collection point at The Swan Inn Enford (once the Swan reopens) in sealed envelopes, no later than 30 May 2026.

No submissions will be considered after this date.

If you have questions, please email enfordfund@gmail.com or reach out to one of the Enford Community Fund group - listed on page 34.

Happy Snapping!

A Special Request to Walkers & Dog Owners

At this time of year, we are starting to see summer migrants returning to Wiltshire. On Salisbury Plain open grassland and mixed farming support a wealth of farmland birds, but with limited tree cover many of these nest on the ground. We are fortunate to host a population of stone-curlew, a migrant wader which nests on stoney open ground. Salisbury Plain is a stronghold for them, and landowners and conservationists have worked together for 40 years to provide suitable habitat for the species. The birds are camouflaged and rely on this to remain undetected, but are easily disturbed leaving the eggs vulnerable to predators.

Most dog owners are responsible and aware of the countryside around them. But please be aware of the unique sensitive nature of the area and the ease with which a dog, especially off lead and running through grassland habitats, can impact ground nesting birds. From April to August these birds will have eggs and chicks, and whilst few dogs take them, the impact of disturbance can be significant. Please keep dogs under control and avoid areas where there may be ground nesting birds. We hope you enjoy your walks and value having access to such a unique area and the wildlife that lives here.

Nick Tomalin, RSPB Wessex Stone-curlew Project



Jayne's Race for Life

14th June 2026

Bournemouth 10k



GREAT BUSTARD GROUP

Patron: HM King Charles III



The male Great Bustards are in the middle of the “lek” where they try to attract a female with the size and brightness of their displays. The first nests are also just underway. Great Bustards have a very low rate of reproduction and recruitment to the population. Most nests will ultimately fail. This is offset by the fact the adult birds have such a long lifespan – many will approach 20 years. The adults have no predators; they can outfly an eagle and are too alert and fast for foxes. Chicks and youngsters are a very different matter and are vulnerable to predation from all sorts of predators from birds of prey to foxes and, it must be said, like all ground nesting birds on Salisbury Plain, free running dogs.

The first silage cuts have been made and these also present a danger to nesting females and we will check all silage crops before they are mown with thermal imager equipped drones. As always, we are very grateful to the farms for keeping us informed and working with us on this task.

A date for your diary: the **GBG Open Weekend 2026** will be the weekend of the **12th and 13th of September** and will be held at Enford Village Hall.

Update on The Swan

Andy, Sophie and Steve would like to thank everyone for their wonderful support since the pub reopened on 2nd April. We have some great events planned for the next few months. Keep your diaries free for more Irish music on **16th May, a jazz and blues** evening with the wonderful **Ruby Darbyshire in June**, and a special **BBQ on 4th July**. We will also be having a **Gantry Party** in due course, installation date is currently being agreed. We will also be introducing our Grazing Platters – delicious locally sourced charcuterie and cheese with a host of extras to keep the hungriest of grazers happy.

We are so looking forward to sharing the Summer months with you and again, thank you for your support. Our huge thanks also to the volunteers who do so much for us and for the pub; without their support we wouldn't be up and running thank you to every one of them. **Keep an eye out for our extra opening hours** whilst the evenings are long and sunny!



The Arts
Society
Pewsey Vale

The Arts Society - Pewsey Vale lecture at Bouverie Hall Tuesday **5th May** on “**Les Trois Grande Dame of Impressionism**”

The Impressionists were an innovative and radical group of artists who took Paris by storm in the 1870s. Using new colours and techniques, they created paintings of modern life which shocked the art establishment. From the start, the group included women, but their contribution to Impressionism has been overshadowed by their male contemporaries. **Marie Bracquemond, Berthe Morisot** and **Mary Cassatt** all exhibited at the Impressionist exhibitions alongside Monet, Renoir and Degas.

Sarah Burles, the lecturer, studied History of Art at Cambridge before her master's at University College London. She had a career in museum and gallery education, working at the Fitzwilliam Museum for many years. She became an Arts Society accredited lecturer in 2021.

Doors open from **2.00pm** and refreshments are available.

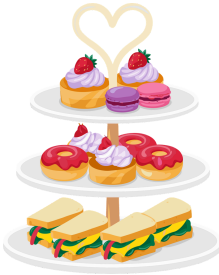
Non-members are always welcome - **£7 on the door**.

Please visit our website taspv.org.uk for more information

Brews in the Pews

Enford's Community Café

is staying in the church!



First **Thursday** of the month
The next Brew is on **May 7th**
From 10 – 11:30
Tea, Coffee & Homemade Cakes
**A place to meet your friends
and make new friends.**



Friends of Netheravon school PTF

Monthly prize Bingo

Netheravon Phoenix Hall:
Starting at 2pm

Bingo dates for 2026:

4th May | 1st June

6th July | 3rd August



The Enford Community Fund

The Enford Community Fund is a not-for-profit community organisation managed by a small group of local volunteers who organise activities and events across the parish and make donations to benefit the wider community.

Funding is available to support projects and events in the Parish of Enford (which includes Compton, Coombe, East and West Chisenbury, Fifield, New Buildings and Newtown). Applications for awards must be made in writing, by email, to enfordfund@gmail.com or by letter to one of the group members (Carolyn Ansell, Katie Briscoe, Tracy Buttery, Rob Hibberd, Richard Petitt, Chris Rose).

The following guidelines will be followed in allocating funds:

1. Submissions will be considered at the next scheduled meeting and within 3 months of the request being submitted.
2. Funding will be made for individual projects and is not designed to allow awardees to become reliant on the award on an annual/regular basis.
3. Awards are made to causes benefitting the community, not specific individuals.
4. No awards will exceed £1,000 in total.
5. For any award to be made, there must be agreement by 75% of the group.

Enford Parish council Meetings 2026

www.enfordparishcouncil.gov.uk

**All meetings Held at
Enford Village Hall**

Day	Date	Time	Meeting
Tuesday	5 th May	7:30pm	Parish Council Meeting
Tuesday	7 th July	6:30pm 7:30pm	AGM Meeting Parish Council Meeting
Tuesday	1 st September	7:30pm	Parish Council Meeting
Tuesday	3 rd November	7:30pm	Parish Council Meeting
Tuesday	1 st December	7:30pm	Parish Council Meeting

LOCAL SUPPORT & INFORMATION

Pewsey Vale Community Craft & Tea Room



Open Wed – Sat
10.00 – 4.00



OLD FORD COURT,
HIGH St. PEWSEY

Profits donated to local charities

Mobile Library Services

Dates and times of all mobile library stops are available online at Libraries-wiltshire Council and printed timetables from the mobile library. We look forward to seeing our customers when we next visit.

Due in Enford on Friday 1st & 29th May at 3:25 for 20 minutes

If you haven't used the mobile library, it's free to join and you can use your membership card in any Wiltshire library or online to access free ebooks and magazines.

Netheravon Library

Open Monday & Thursday 1pm - 5pm

Future Dates:

29th May 26th June
24th July 21st August

Love Reading,
Love Libraries



Age UK Wiltshire Information & Advice Team

0808 196 2424

enquiries@ageukwiltshire.org.uk

www.ageuk.org.uk/wiltshire

CrimeStoppers.

0800 555 111

100% anonymous. Always.

www.crimestoppers-uk.org

Crimestoppers is not the police. If you require urgent police attention, please

dial 999

PARISH DEFIBRILLATOR LOCATIONS

1. Hill House Annex, 9 Longstreet, SN9 6DD Grid ref SU142515
What3Words - /// Parrot/slid/steadier

2. Red Lion, East Chisenbury SN9 6QA
What3Words - /// Foal/Thus/Ghost



If you think you need to use a defibrillator, call 999. The Emergency Service will give you the code to get into the cabinet.

See www.enfordnewsletter.org for more information and a short video on how to use it.



FLY TIPPING

If you spot someone fly-tipping in Wiltshire, report the offender to us through our online reporting system -

www.wiltshire.gov.uk/fly-tipping

As a reward for reporting a fly-tipper you could get a gift voucher of up to £200 following the payment of a Fixed Penalty Notice or a successful prosecution.



Swindon Domestic Abuse Support Service

24 hours 7 days a week 365 days a year

If you are worried about your situation, you can call them in confidence and speak to a real person, not a machine - 01793 610610.

www.swadomesticabuse.org



is independent from the police and you don't have to report a crime to the police to get our help. You

can contact us at any time, regardless of how long ago the crime happened.

Call us free on **0808 281 0113** or **08 08 16 89 111**

Email us via the link on the website victimsupport.org.uk/resources/Wiltshire/ where you will find all the ways you can contact us.

Following the Police and Crime Panel's approval of my proposed 2026/27 budget, Wiltshire Police will be able to maintain officer numbers and community visibility. This decision comes as police forces nationwide face significant financial pressures, Wiltshire is no exception. The cross-party Panel, (councillors from the county), scrutinises the work of the PCC.

Despite delivering £8 million in efficiencies this year and facing a real-term reduction in government funding, Wiltshire Police must still find £4.6 million in savings next year as costs rise. To meet these pressures, the Panel approved a £15 per year increase for a Band D household—around £1.25 a month. This forms a crucial part of the overall police budget, with Government funding, and directly helps protect the frontline services that residents say matter most.

This was not an easy decision, but was the only viable way to protect vital services supporting the continued progress Wiltshire Police is making for our communities. Wiltshire is one of the lowest funded forces yet continues to improve visibility, outcomes and public confidence. If funded at the national average, we would receive an additional £49.6 million for frontline services.

I have been clear that there are no simple savings left. Without this increase, we would face reductions to services people rely on every day. This budget safeguards neighbourhood policing, maintains visible patrols and supports investment in modern operational capability.

I am grateful to the 1,015 residents who took part in our consultation, 56 per cent supported the proposal. After detailed scrutiny, the Panel agreed the increase is a fair and responsible balance in a challenging financial climate, allowing Wiltshire Police to save, sustain and transform while remaining rooted in its communities.



REGISTRATION NOW OPEN

Walk for Wards at Wilton House – Sunday 5th July 2026

You can choose your distance, 3k, 5, 10 or even 15k through the grounds of Wilton house and longer distances go beyond into Hare Warren. It's free to enter and includes lunch and entry to adventure playground in the grounds of Wilton House.

ADVERTISING

Mend it Matt

Handyman

Do you need help with anything...

Leaky taps, Broken gates, Gardening, Bicycle servicing, Painting,
Any of those things that you either need help with or just haven't got round to.

Give me a call and ask. No job too big or small

Matt Jump
07968 580 804

PROFESSIONAL SEWING SERVICES

HANDMADE CURTAINS & ROMAN BLINDS
CLOTHES ALTERATIONS & REPAIRS

"No job too little - or too large!"



ELS BREWIN
Woodborough
01672 851615
07833 127 328



Upavon Village Store

"Everything You Need Locally"

- Fresh fruit & veg, quality meat & fish
- Local produce, fresh bread & coffee
- Wines & spirits, cold beer & cider
- Newspapers & magazines, tobacco & vapes
- Lottery & scratch cards, e-top ups
- Full "top-up" shop available
- Post Office (Mon - Sat: 9am - 1pm)
- We look forward to seeing you!

Mon - Sat: 7am - 7pm

Sat: 8am - 7pm

Sun: 8am - 6pm

11 High Street

SN9 6EA

01980 630268



Oakhenge Logs

Kiln dried hardwood logs

Locally produced in Amesbury
by our family run business.

One half cubic metre builders dumpy bag = £100

Two half cubic metre builders dumpy bags = £190

Tel: 07562092656

WWW.oakhenge.co.uk

PET & HOME SITTING

Caring For Your Pets & Home

Animal lover

Experienced

Reliable

Trustworthy



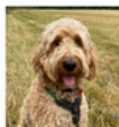
*"Sally is our peace of mind...
I would rather not go away
if she is not available"*



Fully
Insured

Please call
or email
for availability

Testimonials
Available



SALLY EDWARDS

sallyeds@btinternet.com

07870 495 225

Healing  Horizons
Counselling Services

Find Support. Find Hope. Take the Next Step.

Are you searching for a way forward?

Life can present overwhelming challenges, but you don't have to face them alone. At Healing Horizons Counselling Services, every journey starts with a single step—a step towards understanding, healing, and growth

You Are at the Heart of Your Healing Journey

I am an integrated therapist, dedicated to placing you at the centre of every session. Together, we will create a safe and confidential space where you can explore your experiences, challenges, and emotions without judgement.

- Bereavement
- Domestic Abuse
- Anxiety & Depression
- Addiction
- Stress



bacp | professional
members
and family
approved supplier
Registered Member 412657
MBACP

Step into a brighter future. Book your session today and begin your journey to healing.

✉ healinghorizonscounselling@gmail.com

☎ 07395 732891

🌐 <https://healinghorizonscounsellingservices.co.uk/>

AKER

FIRE & SECURITY

INTRUDER ALARMS, FIRE ALARMS, FIRE EXTINGUISHERS,
CCTV, GATE AUTOMATION, FIRE DOOR INSPECTION
For all your Fire and Security needs
Tel 07515358875

email info@akerfireandsecurity.co.uk



M. EDWARDS BRICKWORK Ltd

All elements of brickwork/blockwork undertaken
including extensions, knock throughs, repointing,
chimney removals, retaining walls
& garden walls.

Contact Mark to discuss your requirements
07977 316193 or 01980 630019

Alan PierreBotti

INTERIOR DECORATOR

Tel : 07889 470272
alanpierrebotti1@gmail.com
www.alan-pierrebotti.co.uk



authorised installer
PHILLIP JEFFRIES
NATURAL | TEXTURED | SPECIALITY | WALL COLOURS



GRAY & AMOR LTD.

CARPENTRY & PROPERTY RENOVATION

Covering all aspects of property renovation and maintenance.

View our range of services online or call to discuss your project.

01380 587006 / 01672 596006

info@grayandamor.co.uk www.grayandamor.co.uk



STITCHCOMBE FOODS

LOCALLY SOURCED MEAT AND OTHER FARM PRODUCE



Grove Farm Butchery
Thicketts Road
Mildenhall
Marlborough
Wiltshire
SN8 2FJ
t: 07928 454564



Scan here to click & collect

Our homebred Hereford cattle graze in the Kennet Valley & Savernake Forest, producing exceptional beef that is butchered on farm and sold direct from the Grove Farm Butchery.

We are a full-service butcher supplying local pork, lamb & venison, and English chicken. Our meat boxes represent great value, prices starting at £30.

www.stitchcombefoods.co.uk

e: sales@stitchcombefoods.co.uk

jim oliver

SPECIALIST DECORATING



PRECISION, PASSION AND A PERFECT FINISH

t: 07732 118608

e: jjimoliverdecorating@outlook.com

WWW.JIMOLIVERDECORATING.CO.UK

Independent Carer Available

Level 3 qualified with
Dementia Training
Fully Insured,
DBS Checked.

Comes with references
Please contact Jo
07593 697300

jbligdon821@icloud.com

Advertise here

*For rates and
information contact*

enfordnewsletter@gmail.com



EQUIDAE EQUINE SERVICES

18 The Bluestone Centre, Sunrise Way, Solstice Park
Amesbury, Wiltshire, SP4 7YR

T: 01980 731476 E: equidae-equineservices@outlook.com

Opening Times

Monday to Friday 9.00am – 6.00pm

Saturday 9.00am – 5.30pm

Sunday 10.00am – 2.00pm

Rug Wash and Reproofing Service
Equine Feed-Supplements-Bedding-Hay-Field &
Stable Accessories-First Aid



- › Camera Survey
- › Birds Nests Removed
- › Fully Insured
- › NCSA Registered
- › NVQ Qualified
- › Friendly Local Service
- › Cows Fitted

Call Sean on 07881 206536

seanoades@hotmail.com www.so-chimney-sweeping.co.uk

SB Paint and Decorate

Over 30 years' experience

Interior & exterior
painting
Wallpapering
Tiling



Contact Shaun on
sbpaintanddecorate@gmail.com
07774 479944

Avon Security

MASTER LOCKSMITHS

Engraving Service Now Available

- > Brass
- > Plastics
- > Aluminium
- > Glass
- > Trophies
- > Gifts

Free Advice & Quotations On Securing Your Property & Belongings

Key Cutting
Locks Supplied & Fitted
Access Control
Safes
PVCu Locks
Master Key Systems
Lock Repairs
Door Furniture & Ironmongery
Transponder Car Keys
Keys To Code
Watch Batteries & Straps
Emergency Call Out Service



01980 626000

21, Salisbury Street, Amesbury, Wiltshire, SP4 7AW

www.avonsecurity.net

Chubb
LOCKS

SUPER
CENTRE



TF Rural Services & Garden Maintenance

FULLY QUALIFIED & INSURED

Salisbury Plain & Surrounding Areas

- Tree Pruning
- Lawn Mower Servicing
- Garden Maintenance
- Fencing
- Scrub Clearances
- Agricultural Work
- Grass and Hedge Cutting
- Metalwork / Welding
- Knapsack Spraying
- And Much More

☎ 07873 724815 / ✉ tfruralservices@gmail.com

Centrally Heated Shepherd's Hut B&B in Haxton

5* Airbnb Reviews. Tranquil & private spot in cottage garden among trees, overlooking a meadow with its own secluded outside space and parking. Fully insulated, underfloor heating, flushing loo, shower, mini kitchen, double bed, WiFi & TV/DVD. Sleeps two. Suitable for year round occupancy.

Contact Helen on
07974 966440
h.gouldcooper@gmail.com



PEST CONTROL SERVICE

www.molegone.co.uk 

Moles, Squirrels, Rodents
& Wasps/Hornets

Covering South Wiltshire and the
Dorset/Somerset/Hampshire borders

CRB Checked, Fully Insured
Yearly/Monthly Contracts Available
No Catch No Fee on Moles and
Squirrels, trading since 2010

Contact Roy on 01722
716972 or 07798 570443

Private Residences, Local Councils, Places of
Worship, Equestrian & Commercial Sites, Golf
Clubs & Farms are amongst my clients

JAGUAR EXECUTIVE TAXI

PRIVATE TAXI SERVICE

**All distances covered
at reasonable rates**

Mob: **07909 386775**

Booking Mob: **07825 233216**

email:

janeruddhughes48@gmail.com



Bespoke Fashion Design and
Dressmaking for any occasion.

For more details contact

Ramona Edwards

rhensel85@gmx.de // 07827597084

Advertise here

For rates and

information contact

enfordnewsletter@gmail.com



Plumbing, Heating, Electrical &
Renewable Energy

Solar Thermal & PV, Air & Ground Source Heat Pumps,
Ventilation, Boiler Replacements. Domestic, Commercial &
Industrial Contractors. Family Business Established 1970.

Free Estimates and Advice:

Tel: 01980 670667 Fax: 01980 670811

www.rgvengeering.co.uk info@rgvengeering.co.uk



MODERN & TRADITIONALLY DESIGNED MEMORIALS

M J SLY

Monumental Stonemason

New Memorials, Additional Inscriptions

Restorations, Free Home Visits

Free Brochure

Marlborough (01672) 516797

Email: martin@mjsly.co.uk

Website: www.mjsly.co.uk

Workshop & Showroom Pelham Court,
London Road, Marlborough, Wiltshire

VILLAGE COMMITTEES

PARISH COUNCIL www.enfordparishcouncil.gov.uk

Chairman	Richard Roberts	670955
Vice Chairman, PCC, Rights of Way Roads and Highways	Mark Hiskett (PROW)	
Planning	Martin Farrow	671676
Parish Clerk	Cliffe-Roberts	670034
Playpark, Village Amenities & Youth Representative	Elizabeth Harrison	670532
Neighbourhood Watch & Police Liaison	Jane Young	
No Specific role	Charlotte Clark	670276
	Bruce Waight	670113
	Pat Holdway	671792
	Rob Hibberd	
Flood Warden	Mark Symonds	

VILLAGE HALL

Chair and Booking Officer	Judy D'Arcy-Irvine 670501	ENFORD COMMUNITY FUND
Vice Chairman	(vacant)	
PC Rep	Jane Young	Katie Briscoe
Secretary Vacant	(vacant)	Rob Hibberd
Grounds Officer	Bruce Clark	Richard Pettitt
Maintenance Officer	David Spencer	Chris Rose
Newsletter	Jacqui Elkins	Tracy Buttery
PCC	Fiona Leakey	Carolyn Ansell
Gardening Club	Emma Stringer	
Junior Football Club	(vacant)	

NEWSLETTER

Chair	(vacant)
Vice Chair & PC Rep	Jane Young
Secretary & Advertising	Jeni Scott-Dagleish
Treasurer	Gareth Rowe
Village Hall Rep	Jacqui Elkins
Communication	Theresa Horsey
Compiler & Contents	Claire Mingham
Social Media Officer	Iris Daunt-Withers
Website Officer	Kim Riche
Committee	Shona Stewart
Co-opted Member	Guy Allen

PAROCHIAL CHURCH COUNCIL

Church Wardens	Vacant
Treasurer	Richard Leakey
Secretary	Fi Leakey
Council Members:	Mary Burdick
	Fanny Middleton
	Sue de Candole
	Rev Jayne Buckles
	Derek Buckles

Useful numbers

DOCTORS

DURRINGTON	Avon Valley Practice Surgery	01980 652378
LARKHILL	Larkhill Medical Centre	01980 845266
UPAVON	Avon Valley Practice Surgery, Fairfield	01980 630221

HOSPITAL

SALISBURY DISTRICT HOSPITAL	01722 336262
-----------------------------	--------------

OTHERS

ELECTRICITY	105
ENVIRONMENTAL AGENCY	0800 80 70 60
FLOOD LINE	0345 988 1188
	or 0345 602 6340
GAS	0800 111 999



DURRINGTON LINK	LINK (Durrington & District)	07484 533559
-----------------	------------------------------	--------------

SCHOOLS

DURRINGTON, Avon Valley Academy	01980 652467
NETHERAVON, All Saints' C of E Primary	01980 670339
RUSHALL, Rushall C of E Primary	01980 630360
PEWSEY, Pewsey Vale Secondary School	01672 565000

ENFORD PARISH COUNCIL WEBSITE
WILTSHIRE COUNCIL WEBSITE

www.enfordparishcouncil.gov.uk
www.wiltshire.gov.uk

HQ SALISBURY PLAIN TRAINING AREA

999 MOD Police Control Room - **Crime in progress**

01980 674951 24-hour Range operations - To report suspicious activity or non-emergency crime.

01980 620819 Complaints Line - The only way to make a complaint.

0800 022 3334 Landmarc National Service Centre - To report damage to or fly-tipping on the training area ONLY.

For Salisbury Plain Training Area News, giving times of live firing, current and upcoming exercises go to:

www.gov.uk/government/publications/salisbury-plain-training-area-spta-newsletter

Health & Safety reminder for all Military Training Areas & Ranges:

Do not touch or tamper with Military debris. Wash your hands before you eat. Clean your footwear before you enter your car or home.

The Swan is Open!

“You don't know what you've got 'till it's gone.”

April 2nd 2026, a landmark day for Enford, the sun shone & **The Swan** reopened. We have missed the pub; the chance to catch up with friends and neighbours, meet new people, share news, tell jokes & enjoy banter all over a great pint, a glass of wine, or a mood boosting Gin and Tonic.

The Swan was open in time for the Easter weekend. Great effort was put into preparing for the grand reopening and the work was hugely appreciated by everyone who came. Not only new beers and wines but to mark the Easter weekend, chocolate eggs, and cakes were on offer. The momentum generated that weekend has continued. Quiz night, on a Thursday, with DoughJo Pizza's every other Thursday. The Grand National was shown live, with entertainment and delicious canapes. (Thank you Emma Stringer). And with glorious sunshine the pub initiated “Special Openings” so we could enjoy welcome refreshment - who can resist a cold beer on a sunny spring evening! Not many by the turnout!

None of this would be possible without the generosity and hard work of Sophie and Andy. Thank you both. Not only for investing in the pub, but also little things, a new door, the biggest jar of chocolate eggs ever, and “swan green” blankets to keep us warm as the sun goes down. Also **THANKS Steve Stringer**; keeps the beer flowing and the bar stocked. It's fantastic that The Swan is open and thank you to all who supported. Without “punters” the village won't have the pub it needs and deserves.

Ruth Wilkinson

