

September 2025

Enford Newsletter

*What's Happening In and Around East and West Chisenbury,
Compton, Coombe, Enford, Fifield, New Buildings & Newtown*



October 2025



**October****November**

Thurs	2nd	Household waste			
Tues	7th	Mixed dry recycling		Tues	4th
Wed	8th	Garden waste		Wed	5th
Thurs	16th	Household waste		Thurs	13th
Tues	21st	Mixed dry recycling		Tues	18th
Wed	22nd	Garden waste		Wed	19th
Thurs	30th	Household waste		Thurs	27th

All dates are taken from the Wiltshire Council website and are accurate to the best of our knowledge.

Further information is available at

www.wiltshire.gov.uk/rubbish-and-recycling

Dates of note in this edition...

October Events

<i>Thursday 2nd</i>	<i>Hub in the Pub/Brew in the Pew</i>
<i>Tuesday 7th</i>	<i>Pewsey Arts Lecture</i>
<i>Friday 10th</i>	<i>Navy Lark Concert</i>
<i>Tuesday 14th</i>	<i>Enford Gardening Club</i>
<i>Wed- Fri 15- 17</i>	<i>Rockbourne Fair</i>
<i>Tuesday 21st</i>	<i>Enford Film Night</i>
<i>Saturday 25th</i>	<i>Bonfire and Fireworks</i>
<i>Tuesday 28th</i>	<i>Air Ambulance Quiz Night</i>
<i>Wednesday 29th</i>	<i>Great Bustard Gin Tasting</i>

November

<i>Saturday 22nd</i>	<i>Enford Church Christmas Fayre</i>
----------------------	--------------------------------------

Contents

The next Newsletter deadline is
Wednesday
15th October

Waste Collection/Dates of Note	2
Contents/ Deadline/	3
Church Team Message	4
Church Services/	5
Village Hall Activities	6
Gardening Club	7
Film Club	8
Bonfire Night / Sunflower	9 - 11
Church Christmas Fayre	12
Great Bustard Group	13
Wilts Air Ambulance/Hub in Pub	14
Recipe of the Month	15
The Swan Update	16/17
Pewsey Arts Society	18
Navy Lark	19
Rockbourne Fair/ Bingo	20
Enford Community Fund/Parish Council Meetings	21
Local Support & Information	22-24
Police CC / Advertising	25-37
Village Committees	38
Useful Numbers	39
Bonfire Night Poster	40

Emails are preferred with editable attachments, Word documents, so that we can fit them into the available space.

enfordnewsletter@gmail.com

However, they can also be given to a Committee member but all items, however they are submitted, must be with us by the deadline and signed. We will withhold the author's name if requested.

Enford Newsletter Committee reserves the right to reject or omit from publication any material that is considered by majority of Committee Members to be detrimental to any person; not in the best interests of the community as a whole or inappropriate for this medium.

*We extend a Warm
welcome to **Amber
Kottmeier** and her
son, **Wolf** who have
moved into New
Buildings.*

*And also wishing a
full and speedy
recovery to **Christine
Young**.*



Thoughts from Rev. Philip Bromiley

The Hazelnut

I wonder if you have heard of Mother Julian of Norwich. She had a series of visions when she was 30 years old. She wrote them down in a book called *Revelations of Divine Love*, which is the earliest surviving work in the English language by a woman.

In one of the best-known of her visions, Julian sees a hazelnut in the palm of her hand. She asks, 'What may this be?' and hears the reply, 'It is all that is made.' She marvels at how small the hazelnut is, and ponders how it is that things exist at all. She learns that things exist by the love of God. God made us, God loves and God sustains us.

The smallness of the hazelnut is significant, because through its smallness, Julian realises how small the world is in God's hands. Today we might say, how small the universe is in God's hands. It is as if the hazelnut becomes, for Julian, the keyhole through which she sees the wonder of God.

William Blake says, 'To see a world in a grain of sand, and a heaven in a wild flower: Hold infinity in the palm of your hand, And eternity in an hour.' Blake is making the same point – that through something tiny you can see everything.

So in this month of October, a beautiful autumnal month, look at the creation around you and see that you too are made, loved and sustained by God.

Blessings to you all, Rev. Philip Bromiley

For more information about the Avon River Team Churches contact:

The Team Office: 01980 655457 www.avonriverteam.org.uk/

Rev. Philip Bromiley: 01980 258549 or philip@avonriverteam.org.uk



ENFORD VILLAGE HALL & RECREATION GROUND

Private Parties: The Village Hall is the perfect venue for Weddings and Special Anniversaries or Birthdays. It is also ideal for Childrens' Parties and Christenings – or any other excuse for a celebration!

Please contact Booking Officer enfordvillagehall@btinternet.com for information or visit the Village Hall entry on the website www.enfordnewsletter.org

Day	Activity	Time	Contact
Mon	Post Natal Yoga	10.30 a.m. to 11.30 a.m.	Marie Hanley Mob: 07871 302303 email mamawaveyoga@gmail.com
	Yoga	6.00 p.m. – 7.00 p.m.	Emma Pettitt Tel: 01980 670510 emma@petittbros.co.uk
	Pregnancy Yoga	7.30 p.m. – 8.45 p.m.	
Tues	Enford Film Club	Film information and dates are published in the Newsletter each month.	Theresa Horsey etphorsey@gmail.com or enfordvillagehall@btinternet.com
Tues	Gardening Club	7pm - 9pm 2 nd Tuesday in the month. Full details in the Newsletter club item each month.	Steve Stringer 07899 758222 steve.stringer@outlook.fr Fanny Middleton Tel: 01980 671645 fannysurtees@btinternet.com
Tues	Parish Council	Please check PC item in newsletter each month or PC website for dates.	Parish Clerk Tel: 01980 670034 clerk@enfordparishcouncil.gov.uk www.enfordparishcouncil.gov.uk
Wed	Short Mat Bowls	7pm - 9:30pm September – April	David Spencer Tel: 01980 670526 spencersgb@yahoo.co.uk
Thur	Pilates	9am – 10am	Nicci Caswell Tel: 01980 625245 nicci@thecaswells.uk
Sat	Junior Football Club	10am– 11am Recreation Ground	Steve Todd stodd@qinetiq.com

ENFORD GARDENING CLUB



**“Flights of Fancy: Gardening for
butterflies and other stories”**

with Andrea Leaman

Tuesday 14th October 2025

Bring and buy plant stall, Raffle
Tea and coffee

7.00 for 7.15 pm Enford Village Hall
Entrance £5. Everyone Welcome!

Contact steve.stringer@outlook.fr Tel 07899 758222

Enford Film Evenings

TUESDAY 21 OCTOBER @ ENFORD VILLAGE HALL

'Downton Abbey: The Grand Finale'

We are hoping to show this film but there is no date as yet for streaming. If it is not available we will look at streaming a ballet or opera or alternatively we could show '**The Ballad of Wallis Island**' with Carey Mulligan, '**The Penguin Lessons**' with Steve Coogan or '**The Critic**' with Ian McKellan, all of which have been recommended. Get in touch and let us know if you would like a Robert Redford film: '**Butch Cassidy**', '**The Sting**', '**The Way We Were**' and '**All The President's Men**' are some suggestions. Or if you would be interested in an Opera or Ballet.

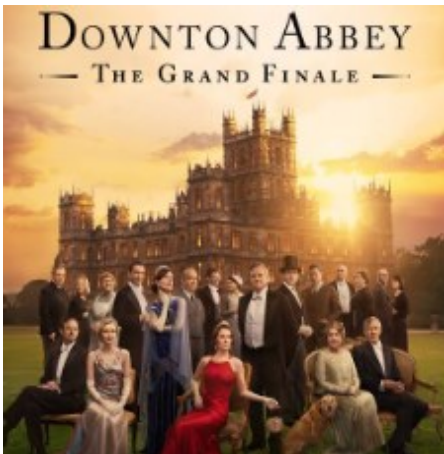
When we have made a decision we will post it on the newsletter website www.enfordnewsletter.org and the facebook page.

Notices will be sent to all usual recipients.

Doors open at 6.30 for drinks and nibbles for **7.15 start**.

Tickets £8 to include a glass of wine and nibbles!

Please email if you require further information
enfordvillagehall@btinternet.com



Remember, Remember the 25th of October!

The Enford Bonfire and Fireworks Night is back at the Village Hall, and you won't want to miss it! Organised by the Enford Community Fund, this year's celebration promises an evening full of fun, food, and fantastic entertainment. Expect tasty food and drinks, competitions for children, a raffle, and of course a spectacular bonfire and firework display!

As the event takes place close to Halloween, we will also have our fancy dress and pumpkin carving competitions taking place for our younger guests. It'll also be the very first opportunity to buy the **Enford 2026 calendar** which showcases the photographic talent of many of our residents!

Schedule:

- 6pm – Gates open, food & drink available
- 6:30pm – Bonfire lighting
- 7pm – Fireworks display begins
- 7:30pm – Competition winners announced
- 7:45pm – Raffle draw
- 8pm – 10pm – Food and drinks continue in the field

Entry costs:

- Adults: £8 / £6.50 early bird until 11 October
- Children 4-16: £5 / £4 early bird until 11 October
- Under 3's are free



Buy tickets in advance to save money! Scan this QR code to buy online* or visit the *Enford, Chisenbury and Coombe* Facebook page for the booking link. You can also purchase tickets at The Swan during pub opening times (card payment only). Depending on ticket pre-sales, a small number of tickets may also be available on the gate.

What's happening?

- Fancy dress and pumpkin-carving competitions open to all ages
- The new Enford Parish calendar on sale - perfect for Christmas
- Delicious BBQ, homemade cakes, hot drinks and locally sourced bar
- A professional fireworks display by Smart Pyrotechnics
- Numerous charity and craft stalls which are offering a variety of local products and services

We need your Help for the Bonfire Night!

Can you spare just an hour or two to help to make this event a success?
We're looking for help with:

- Displaying posters around the area
 - Set-up
 - Parking
 - Baking cakes
- Entry and ticketing
 - Food & drink
 - Clear-down

If you can help us, in any way, please email EnfordFund@gmail.com with your details, information on what you are able/willing to do and your availability.



Last Year's Bonfire Night Celebrations



Images of Last Year's Bonfire and Fireworks

2*1/

Spectacular



Amazing Amelia

This is the absolutely stunning sunflower plant grown by 5 year old Amelia Loughman. She grew it by herself from the seeds she was given at the Enford Summer Fete!

This brilliant picture was sent in by her grandmother. Thank you. Remember, we are always pleased to get your pictures of Enford news, views or events.

ENFORD CHURCH

Christmas Fayre

SATURDAY NOV 22nd

1pm-4pm



SANTA'S GROTTO

CAKE STALL * TEAS * SOUP

RAFFLE * BOTTLE STALL

GIFTS AND MUCH MORE

Free Entrance * Bring the Family

GREAT BUSTARD GROUP

Patron: HM King Charles III



It has been a successful breeding year for Wiltshire's Great Bustards. Our searching of silage fields and super support from local farmers ensured there were no casualties from mowing. It is still too early in the year to count the final successes, but there are good numbers of female Great Bustards with chicks. The photo above shows a female flying with her male chick. Male Great Bustards are much bigger than females and overtake them in terms of size in the autumn. The female will keep her chick with her until January.

The long warm and dry spell of weather probably favoured the birds, but did bring some extra challenges with the very early harvest – our experiences with nature is that any change will have several knock on changes. Some chicks were too young to fly when the first fields were harvested, something we have not faced before.

Our Visitor Centre in the Village Hall will be open during the Enford **Bonfire Night on 25th October**. We will also be at The Swan on the evening of the **29th October** with the **Downton Distillery** to talk about Bustards and **Great Bustard Gin**. We hope to see many of you at those events.



SUPPORT WILTSHIRE AIR AMBULANCE

Quiz Night: Tuesday 28 October, 7 – 9pm at
The Milk Churn, Melksham, SN12 6AD

Teams of four to six. Tickets cost £5 per person.

All entries must be booked in advance.

The Hub in the Church

**Enford's Community Café
in All Saints Church**



**1st Thursday of the month
The next Hub is on 2nd October**

From 10 – 11:30

Tea, Coffee & Homemade Cakes

**A place to meet your friends
and make new friends.**

Recipe of the Month:

If you grow courgettes and find that this time of year, your courgette is now a marrow and you're wondering what to do with it, then here's a delicious recipe to stop you putting it on the compost heap!!

I cut it into rounds, which looks appealing and is easier to serve. The quick toppings turn the whole thing into a lovely bubbling, irresistible gratin. It can be prepared up to a day in advance but don't add the filling or topping until you are ready to put it in the oven.

Serves 3-4

1 tbsp olive oil
1 chopped onion
1 garlic clove crushed
a pinch of dried oregano
450g minced lean lamb or beef
2 tsp tomato puree
1 tsp Dijon mustard
1 tbsp flour
150ml (1/4 pint) water
salt and freshly ground pepper
1 marrow/squash, roughly 1.3-1.8kg (3-4lbs)

Topping 1:
2 tbsp creme fraiche
2 tbsp grated Parmesan cheese

Topping 2:
2 tbsp fresh breadcrumbs
2 tbsp grated cheddar cheese

Heat the oil in a saucepan, add the onion, garlic and oregano and cook until soft. Add the lamb or beef and cook, stirring, until it has all taken on some colour. Add the tomato puree, mustard, flour, water and seasoning and bring up to the boil, stirring all the time. Simmer for 5-10 mins until thickened a little. Check the seasoning. It should be well seasoned.

Preheat the oven to 200C (400F) gas 6. Cut the marrow into rings about 5cm (2") deep. Peel the rings and remove the seeds from the centre. Arrange in a shallow, greased, ovenproof dish into which they will fit snugly.



Season lightly and fill the marrow rings with the mince. Drizzle over a little olive oil and cook for 45 mins to 1 hour or until the marrow is soft and cooked right through, depending on the size and age of the marrow.

Mix together the ingredients for your chosen topping and spoon it over each ring. Return to the oven for another 10 mins until golden brown and bubbling. You may need to raise the oven temperature for speedier browning.

Update on The Swan

The Swan's initial month trading as a volunteer operation has been quite a success and full of excitement with all the media attention. Many thanks to Rupert for helping out and for shining a light on The Swan.

We'd like to repeat our thanks to all of our volunteers behind the bar, cleaning and gardening for keeping things going - without you we'd be closed, so many, many thanks! We can still use new volunteers, especially to help out our cleaning crew, so if you'd like to help, please email us at:

theswanenfordcommunitygroup@gmail.com



Our **pop-up pizza friends, DoughJo PizzaCo** have agreed to come every other Thursday and this has proved very popular so far. October dates will be the **9th and 23rd**.

The Swan Update... continued

Upcoming events we are in the process of planning:

Saturday 11th October, an Oktoberfest celebration

Wednesday 29th October, A special evening with the Great Bustard Group to include gin tasting - further details to follow.

'Call My Bluff' wine tasting evening - date and details to follow.



If you have ideas for other events, please let us know!





The Arts Society - Pewsey Vale will begin its autumn lecture series at the **Bouverie Hall** at 2.30pm on **Tuesday 7th October**.

Lucrezia Walker will talk on **Andy Warhol**:

So Much More Than Just the Prince of Pop Art.

Pioneer of Pop Art, his New York studio, The Factory, was the place to be in the 1960s and '70s. Illustrator, printer, film maker, manager of rock band The Velvet Underground, founder of Interview magazine, author of numerous books, creator of iconic pop images of Marilyn, Jackie and Elvis, the soup tin and coke bottle, as well as the coiner of the expression '15 minutes of fame', Warhol's own fame continues long after his death, as the Prince of Pop Art.

An interesting glimpse into the life of one of the artistic icons of the twentieth century.

Doors open at **2.00pm** for refreshments and conversation and the lecture begins at **2.30pm**. Visitors are very welcome - £7 on the



door, payable by card or cash

Please visit our website, taspv.org.uk for further information



Coming to Figheldean Church



THE NAVY LARKS

IN CONCERT WITH

'CATCH OF THE DAY'

ST. MICHAEL & ALL ANGELS CHURCH

FRIDAY OCTOBER 10TH AT 7.00 FOR 7.30 PM

We are delighted to have been able to book the performers above as seriously in demand.

Wonderful seafaring songs and shanties sung with humour and gusto
– I have seen them and can thoroughly recommend –
118 attendees when they appeared in Durrington Church!

Due to expected demand, we will not set the church up in restaurant style as we usually do, due to space, so normal seating will be in place.

We will, of course be offering tea / coffee / and cake in with the

Suggested entry price of only £10.

**payable on the evening by cash or card plus
the inevitable raffle!**

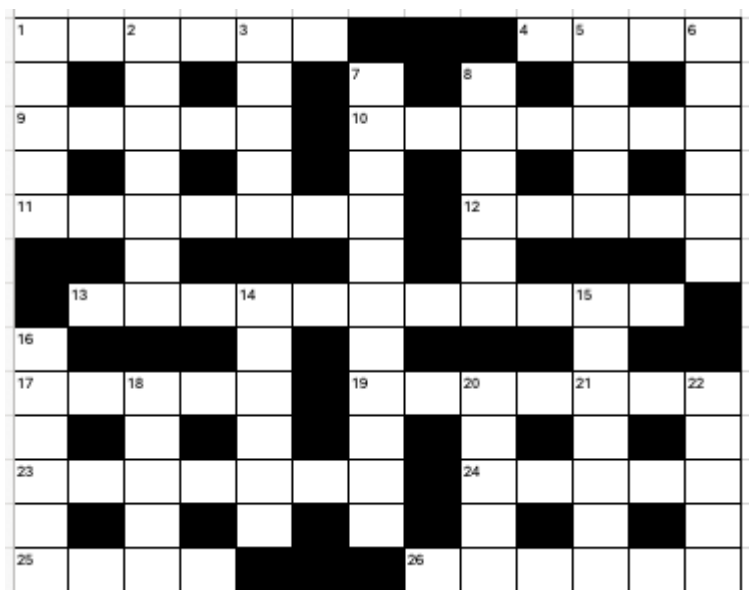
**Please contact Trevor on 670153 or
trevorwoodbridge_5@outlook.com**

**with numbers in your party attending so that we can
ensure enough food along with any special dietary needs.**

Looking forward to a fabulous evening!

Crossword specially written for the Enford Newsletter.

Answers will be published next month.



Across		Down	
1 Hamlet between Enford and Fittleton (6)		1 Monarch's headdress (5)	
4 Enford pub (4)		2 More frequently (7)	
9 Opposite of inner (5)		3 Canal boat (5)	
10 Takes note of (7)		5 Fear (5)	
11 Monastery for women (7)		6 Capital of the Bahamas (6)	
12 Eric Clapton classic (5)		7 E.g. lieutenant, captain, major or colonel (4, 7)	
13 Hot dog sausage (11)		14 The ecosystem, life on earth (6)	
17 Hard work (5)		15 Out of date (7)	
19 Flavourless (7)		16 Crockery for breakfast food (6)	
23 Clique (7)		18 Change (5)	
24 In good time (5)		20 Like a hillside, highly priced (5)	
25 Left at sea (4)		22 Where you might put the laundry after a wash (5)	
26 Eight-legged creature (6)			

ROCKBOURNE FAIR

15 - 17 OCTOBER 2025

Salisbury Racecourse
rockbournefair.org.uk

100+
STALLS

THE EARLY CHRISTMAS SHOPPING EXPERIENCE



Friends of Netheravon school PTF

Monthly prize Bingo

Netheravon

Netheravon Phoenix Hall:

2pm

5th October
2nd November
7th December



THE ENFORD COMMUNITY FUND

The Enford Community Fund is a not-for-profit community organisation managed by a small group of local volunteers who organise activities and events across the parish and make donations to benefit the wider community.

Funding is available to support projects and events in the Parish of Enford (which includes Compton, Coombe, East and West Chisenbury, Fifield, New Buildings and Newtown). Applications for awards must be made in writing, by email, to EnfordFund@gmail.com or by letter to one of the group members (Carolyn Ansell, Katie Briscoe, Tracy Buttery, Rob Hibberd, Richard Petitt, Chris Rose).

The following guidelines will be followed in allocating funds:

1. Submissions will be considered at the next scheduled meeting and within 3 months of the request being submitted.
2. Funding will be made for individual projects and is not designed to allow awardees to become reliant on the award on an annual/regular basis.
3. Awards are made to causes benefitting the community, not specific individuals.
4. No awards will exceed £1,000 in total.
5. For any award to be made, there must be agreement by 75% of the group.

ENFORD PARISH COUNCIL MEETINGS 2025

www.enfordparishcouncil.gov.uk

**ALL MEETINGS ARE HELD AT
ENFORD VILLAGE HALL**

Day	Date	Time	Meeting
Tuesday	4th November	7:30pm	Parish Council Meeting
Tuesday	25th November	7:30pm	Precept Meeting
Tuesday	2nd December	7:30	Parish Council Meeting

Local Support & Information

PEWSEY VALE COMMUNITY CRAFT & TEA ROOM



OPEN: WED - SAT

10.00 - 4.00

**OLD FORD COURT,
HIGH ST, PEWSEY
SN9 5AQ**



Profits donated to local charities; Interested in helping? - Pop in to get a volunteer form.

Mobile Library Services

Dates and times of all mobile library stops are available online via the website [Libraries - Wiltshire Council](https://www.wiltshire.gov.uk/libraries) and printed timetables from the

**Love Reading,
Love Libraries**

mobile library. We look forward to seeing all our customers when we next visit you.

**Next due in Enford on Friday 17th
October at 3:25pm for 20 minutes**

Then on these dates
at the same time.

Friday 17th October
Friday 14th November
Friday 12th December
Friday 9th January
Friday 6th February

If you've never used the mobile library before it's free to join and you can use your membership card in any Wiltshire Library or online to access free eBooks and magazines.

Netheravon Library

Open Monday and Thursday 1pm - 5pm.



Age UK Wiltshire Information & Advice Team

0808 196 2424

enquiries@ageukwiltshire.org.uk.

<https://www.ageuk.org.uk/wiltshire/>

CrimeStoppers.

0800 555111

100% anonymous. Always.

<https://crimestoppers-uk.org/>

Crimestoppers is not the police.

If you require urgent police attention, please
dial 999

PARISH DEFIBRILLATOR LOCATIONS

1. Hill House Annex, 9 Longstreet, SN9 6DD Grid ref SU142515
What3Words - /// Parrot/slid/steadier
2. 2. Red Lion, East Chisenbury SN9 6QA
What3Words - /// Foal/Thus/Ghost

If you think you need to use a defibrillator, call 999. The Emergency Service will give you the code to get into the cabinet.

See www.enfordnewsletter.org for more information and a short video on how to use it.



FLY TIPPING

If you spot someone fly-tipping in Wiltshire, report the offender to us through our online reporting system -
<https://www.wiltshire.gov.uk/fly-tipping>.

As a reward for reporting a fly-tipper you could get a **gift voucher of up to £200** following the payment of a Fixed Penalty Notice or a successful prosecution.



Swindon Domestic Abuse Support Service

24 hours 7 days a week 365 days a year

If you are worried about your situation, you can call them in confidence and speak to a real person, not a machine - 01793 610610.

<https://swadomesticabuse.org/>



is independent from the police and you don't have to report a crime to the police to get our help. You can contact us at any time, regardless of how long ago the crime happened.

Call us free on **0808 281 0113** or **08 08 16 89 111**

Email us via the link on the website victimsupport.org.uk/resources/Wiltshire/ where you will find all the ways you can contact us.

Wiltshire and Swindon



Recent ONS figures show public confidence in Wiltshire Police at 58% — above the national average, highest in the South West and third highest in the country. I'm proud of this, but 42% of people still feel we could do better, and they're right to expect more. Much of this improvement comes from the Chief Constable's focus on being outward looking, engaging with our communities, improving communication. From visiting every domestic burglary to providing postcode specific crime data and contacts online, the Chief Constable, with my backing, is striving to make it easier for you to know your local officers and what's happening in your area.

Visibility remains a priority. However, it's not just about being seen, but about being present where it matters most — in the areas where crime and anti social behaviour are prevalent, when communities need reassurance. The Chief Constable and I have also made big strides in 999 and 101 response times moving from the worst in the country to 16th out of 43. But resources are tight: this year's £6.8 million budget cut means we're doing more with less than almost any other force. Sustaining improvements requires fairer funding from central government.

Public confidence also depends on how victims are treated. For them, no crime is "minor" it's personal and significant. Every victim deserves respect, timely updates, and to feel their case matters. We must remain impartial, especially in an age where social media can inflame division. There can be no two tier policing — every crime and every person must be treated equally, without fear or favour.

These results show we're heading in the right direction — but building trust is a continuous process. I will keep listening, keep pushing for resources, and keep working with our communities to deliver the policing they deserve.

Philip Wilkinson OBE, Police and Crime Commissioner for Wiltshire and Swindon



Patients at Salisbury District Hospital can have loved ones stay by their side in comfort thanks to the special chairs funded by the hospital's charity, the **Stars Appeal**.

The 36 specialist 'by your side' chairs, easily convert from an armchair into a comfortable bed, and mean that vulnerable patients and those near the end of their lives can have a loved one stay by their side.

The sleeper chairs are now available across the hospital wards, funded by the Stars Appeal donors.



Advertising



Oakhenge Logs

Kiln dried hardwood logs

Locally produced in Amesbury
by our family run business.

One half cubic metre builders dumpy bag = £100

Two half cubic metre builders dumpy bags = £190

Tel: 07562092656

www.oakhenge.co.uk

PET & HOME SITTING

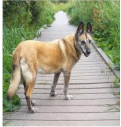
Caring For Your Pets & Home

Animal lover

Experienced

Reliable

Trustworthy



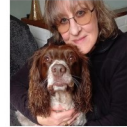
Fully
Insured

*"Sally is our peace of mind...
I would rather not go away
if she is not available"*

Please call
or email
for availability



Testimonials
Available



SALLY EDWARDS

sallyeds@btinternet.com

07870 495 225

MENTAL HEALTH MATTERS

Everyday challenges can feel overwhelming, impacting our mental health and ability to cope. This group will offer emotional validation, a sense of community, a safe non-judgemental space to share leading to reduced isolation and stigma improved coping strategies and resilience.

Netheravon Phoenix Hall

Every Wednesday 7-8.30PM starting 17th September 202 1st 4 sessions

17/09/2025	Introduction to emotions
24/09/2025	Anger
01/10/2025	Stress
08/10/2025	Grief and Loss

No commitment

Drop into any session that
interests you £5 per session

Refreshments provided

I am available for 1-1 sessions



healinghorizonscounselling@gmail.com

07395732891

<https://healinghorizonscounsellingservices.co.uk>

markedwards1301@hotmail.com



FARROW & BALL
PAINT & PAPER

AKER

FIRE & SECURITY

INTRUDER ALARMS, FIRE ALARMS, FIRE EXTINGUISHERS,
CCTV, GATE AUTOMATION, FIRE DOOR INSPECTION
For all your Fire and Security needs
Tel 07515358875

email info@akerfireandsecurity.co.uk



Why choose Bluebird Care?

We're here so your loved one can stay home, where they want to be. Where things are familiar. Where they feel at ease, where they have the best chance to live a full and comfortable life. Whether you're looking for everyday companionship or more complex care, our highly-trained Care Experts will help your loved ones live the life they want,

Live-in Care | Home Care | Complex Care

Call us for a friendly chat on
0172 251 2989 or email us
wiltshiresouth@bluebirdcare.co.uk

bluebird
care®





**GROCERIES
& IN-HOUSE
BUTCHERY**

OPENING HOURS

Mon-Sat: 9.30am-4.30pm

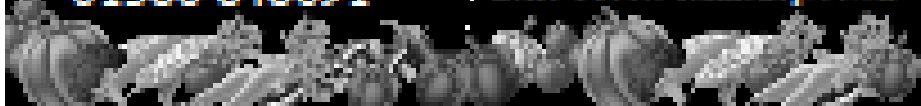
Sunday: 10.00am-4.00pm



Old Potato Yard, Manor Farm, Lydney, Devizes SN10 3PU

01380 848691

hello@roots-farmshop.co.uk



GRAY & AMOR LTD.

CARPENTRY & PROPERTY RENOVATION

Covering all aspects of property renovation and maintenance.

View our range of services online or call to discuss your project.

01380 587006 / 01672 596006

info@grayandamor.co.uk www.grayandamor.co.uk



STITCHCOMBE FOODS

LOCALLY SOURCED MEAT AND OTHER FARM PRODUCE



Grove Farm Butchery
Thicketts Road
Mildenhall
Marlborough
Wiltshire
SN8 2FJ
t: 07928 454564



Scan here to click
& collect

Our homebred Hereford cattle graze in the Kennet Valley & Savernake Forest, producing exceptional beef that is butchered on farm and sold direct from the Grove Farm Butchery.

We are a full-service butcher supplying local pork, lamb & venison, and English chicken. Our meat boxes represent great value, prices starting at £30.

www.stitchcombefoods.co.uk

e: sales@stitchcombefoods.co.uk

MOBILE HAIRDRESSER

Ring Donna

on

07711 579403

Toe 2 Sole at Home

For all your foot healthcare
in the comfort of your home.
For appointment please call

Sousxie Slater
MCFHP MAFHP

Tel: 07540433185

Mend it Matt *Handyman*

Do you need help with anything...

Leaky taps, Broken gates,
Gardening, Bicycle servicing, Painting,

Any of those things that you either need help
with or just haven't got round to.

Give me a call and ask. No job too big or small

Matt Jump

07968 580 804



EQUIDAE EQUINE SERVICES

18 The Bluestone Centre, Sunrise Way, Solstice Park, Amesbury, Wiltshire, SP4 7YR

T: 01980 731476 E: equidae-equineservices@outlook.com

Opening Times

Monday to Friday 9.00am – 6.00pm

Saturday 9.00am – 5.30pm

Sunday 10.00am – 2.00pm

Rug Wash and Reproofing Service

Equine Feed-Supplements-Bedding-Hay-Field &
Stable Accessories-First Aid

To Advertise here

contact

enfordnewsletter@gmail.com

for details and prices.



- › Camera Survey
- › Birds Nests Removed
- › Fully Insured
- › NCSSA Registered
- › NVQ Qualified
- › Friendly Local Service
- › Cows Fitted

Call Sean on 07881 206536

seanoades@hotmail.com www.so-chimnev-sweeping.co.uk

PROFESSIONAL SEWING SERVICES

HANDMADE CURTAINS & ROMAN BLINDS
CLOTHES ALTERATIONS & REPAIRS

"No job too little – or too large!"



ELS BREWIN
Woodborough
01672 851615
07833 127 328

SB Paint and Decorate

Over 30 years' experience

Interior & exterior
painting
Wallpapering
Tiling



Contact Shaun on

sbpaintanddecorate@gmail.com

07774 479944

Digger & Mojo

DECORATIVE ANTIQUES EMPORIUM
AND REPAIR WORKSHOPS



We sell + restore Antiques + revamp your furniture

Mending · Painting · Reupholstery

SHOP OPEN FRIDAYS TO SUNDAYS 11AM-5PM

WORKSHOPS OPEN 7 DAYS BY APPOINTMENT

CALL AHEAD ON 01672 851 510

WOODBOROUGH GARDEN CENTRE, PEWSEY, SN9 5PF

www.diggerandmojo.com

Avon Security

MASTER LOCKSMITHS

Engraving Service Now Available

- > Brass
- > Plastics
- > Aluminium
- > Glass
- > Trophies
- > Gifts

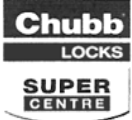
Free Advice & Quotations On Securing Your Property & Belongings

Key Cutting
Locks Supplied & Fitted
Access Control
Safes
PVCu Locks
Master Key Systems
Lock Repairs
Door Furniture & Ironmongery
Transponder Car Keys
Keys To Code
Watch Batteries & Straps
Emergency Call Out Service



01980 626000

21, Salisbury Street, Amesbury, Wiltshire, SP4 7AW
www.avonsecurity.net



Garden Transformations

Hard Landscaping Specialist

Qualified and accomplished in all aspects of
garden landscaping with 16 years experience.
Call or email Dan Withers to discuss your needs.

07833 248269 dwithers.landscaping@gmail.com

Centrally Heated Shepherd's Hut B&B in Haxton

5* Airbnb Reviews. Tranquil & private spot in cottage garden among trees, overlooking a meadow with its own secluded outside space and parking. Fully insulated, underfloor heating, flushing loo, shower, mini kitchen, double bed, WiFi & TV/DVD. Sleeps two. Suitable for year round occupancy.

Contact Helen on
07974 966440
h.gouldcooper@gmail.com





The Village Store sign is mounted on a brick wall. It features the 'Londis' logo on the left, a green tree icon, and the text 'The Village Store' in a large, white, serif font on a green background.

Upavon Village Store

"Everything You Need Locally"

- Fresh fruit & veg, quality meat & fish
- Local produce, fresh bread & coffee
- Wines & spirits, cold beer & cider
- Newspapers & magazines, tobacco & vapes
- Lottery & scratch cards, e-top ups
- Full "top-up" shop available
- Post Office (Mon - Sat: 9am - 1pm)
- We look forward to seeing you!

Mon - Sat: 7am - 7pm
Sat: 8am - 7pm
Sun: 8am - 6pm

11 High Street
SN9 6EA
01980 630268



Wood Turning Gift Certificates



Gift Certificates are available for both half and one day wood turning taster sessions. Coombe based professional turner George Shapland offers a bespoke package of one to one or one to two training for anyone wishing to have a go.

In addition to offering tuition, George has a range of hand turned items for sale, mostly from local timber and also takes commissions.



Contact: George Shapland
01980 671321
george@butterwood.co.uk
www.butterwood.co.uk



PEST CONTROL SERVICE

www.molegone.co.uk 

**Moles, Squirrels, Rodents
& Wasps/Hornets**

Covering South Wiltshire and the
Dorset/Somerset/Hampshire borders

CRB Checked, Fully Insured
Yearly/Monthly Contracts Available
No Catch No Fee on Moles and
Squirrels, trading since 2010

**Contact Roy on 01722
716972 or 07798 570443**

Private Residences, Local Councils, Places of
Worship, Equestrian & Commercial Sites, Golf
Clubs & Farms are amongst my clients

JAGUAR EXECUTIVE TAXI

PRIVATE TAXI SERVICE

All distances covered

at reasonable rates

Mob: 07909386775

Booking Mob: 07825233216

Email:

janeruddhughes@sky.com



Bespoke Fashion Design and
Dressmaking for any occasion.
For more details contact
Ramona Edwards
rhensel85@gmx.de // 07827597084

Oil Boiler Servicing
Commissioning & Repairs

Call

Graham C

Brown & Son

01980



622737

Fully Qualified

Fully Insured

Experienced Technician



**Plumbing, Heating, Electrical &
Renewable Energy**

Solar Thermal & PV, Air & Ground Source Heat Pumps,
Ventilation, Boiler Replacements. Domestic, Commercial &
Industrial Contractors. Family Business Established 1970.

Free Estimates and Advice:

Tel: 01980 670667 Fax: 01980 670811

www.rgvengineering.co.uk info@rgvengineering.co.uk



MODERN & TRADITIONALLY DESIGNED MEMORIALS

M J SLY

Monumental Stonemason

New Memorials, Additional Inscriptions

Restorations, Free Home Visits

Free Brochure

Marlborough (01672) 516797

Email: mailto:martin@mjsly.co.uk

Website: www.mjsly.co.uk

*Workshop & Showroom at Pelham Court,
London Road,
Marlborough, Wiltshire*



NURTURE THE SOUL

Sneak to the Red Lion for a post walkie pint (bring the hounds for a complimentary Bonio), we're open from 11am.

Better still, gather some chums and indulge in a long-overdue lazy Saturday afternoon (Scrabble available).

The bar is open into the evenings for sundowners or pre-dinner drinks (black-tie not required). We hope to see you later.



RED LION | EAST CHISENBURY

VILLAGE COMMITTEES

PARISH COUNCIL www.enfordparishcouncil.gov.uk

Chairman	Richard Roberts	
Vice Chairman, PCC, Rights of Way	Mark Hiskett (PROW)	670955
Roads and Highways	Martin Farrow	
Planning	Peter Cliffe-Roberts	671676
Parish Clerk	Elizabeth Harrison	670034
Playpark, Village Amenities	Jane Young	670532
and Youth Representative		
Neighbourhood Watch and	Charlotte Clark	670276
Police Liaison		
Tidworth Area Board and	Anthony D'Arcy Irvine	670501
Village Hall Representative		
No Specific role	Bruce Waight	670113
	Pat Holdway	671792
	Rob Hibberd	
Flood Warden	Mark Symonds	

ENFORD COMMUNITY FUND

Katie Briscoe	Tracy Buttery
Rob Hibberd	Carolyn Ansell
Richard Pettitt	
Chris Rose	

PAROCHIAL CHURCH COUNCIL

Church Wardens	Vacant
Treasurer	Richard Leakey
Secretary	Fi Leakey
Council Members:	Mary Burdick
	Fanny Middleton
	Sue de Candole

NEWSLETTER

Chair:	Vacant
Vice Chair &	Jane Young
PC Rep:	
Secretary &	Jeni Scott-
Advertising:	Dalgleish
Treasurer:	Gareth Rowe
Village Hall Rep:	Jacqui Elkins
Communication	Theresa Horsey
Compiler & Contents	Claire Mingham
Social Media	Iris Daunt-
Officer:	Withers
Website Officer	Kim Riche
Committee:	Shona Stewart

VILLAGE HALL

Chairman and	Judy D'Arcy-Irvine
Booking Officer	01980 670501
Vice Chairman	Vacant
PC Rep	Jane Young
Secretary & Grounds	Hamish Scott-
Officer	Dalgleish
Camera Club	Jane Young
Newsletter	Jacqui Elkins
Property Officer	David Spencer
Gardening Club	Rosemary Cox
Short Mat Bowls	David Spencer
Junior Football Club	Ollie Staggs

USEFUL NUMBERS

DOCTORS

DURRINGTON	Avon Valley Practice Surgery	01980 652378
LARKHILL	Larkhill Medical Centre	01980 845266
UPAVON	Avon Valley Practice Surgery, Fairfield	01980 630221

HOSPITAL

SALISBURY DISTRICT HOSPITAL	01722 336262
-----------------------------	--------------

OTHERS

ELECTRICITY	105
ENVIRONMENTAL AGENCY	0800 80 70 60
FLOOD LINE	0345 988 1188
	or 0345 602 6340
GAS	0800 111 999

POLICE



DURRINGTON LINK LINK (Durrington & District) 07484533559

SCHOOLS

DURRINGTON, Avon Valley Academy	01980 652467
NETHERAVON, All Saints' C of E Primary	01980 670339
RUSHALL, Rushall C of E Primary	01980 630360
PEWSEY, Pewsey Vale Secondary School	01672 565000

ENFORD PARISH COUNCIL WEBSITE www.enfordparishcouncil.gov.uk

WILTSHIRE COUNCIL www.wiltshire.gov.uk and choose the appropriate service.

HQ SALISBURY PLAIN TRAINING AREA

999 MOD Police Control Room - **Crime in progress**

01980 674951 to call 24hour Range operations - *To report suspicious activity or non-emergency crime.*

01980 620819 Complaints Line - ***The only way to make a complaint.***

0800 022 3334 - Landmarc National Service Centre - *To report damage to or fly-tipping on the training area ONLY.*

For Salisbury Plain Training Area News, giving times of live firing, current and upcoming exercises go to

<https://www.gov.uk/government/publications/salisbury-plain-training-area-spta-newsletter>

Health & Safety reminder for all Military Training Areas & Ranges:

Do not touch or tamper with Military debris. Wash your hands before you eat. Clean your footwear before you enter your car or home.

The Enford Community Fund presents

Enford Bonfire & Fireworks

Saturday 25 October – gates open 6pm

Enford Village Hall, SN9 6DD

Very limited parking available

Best fancy dress and
best carved pumpkin
competitions

BBQ, Cakes, Bar, Raffle
Craft & charity stalls
Enford calendar on sale



Scan this code to
book your tickets!

Entry costs: £8 per adult, £5 per child (under 16)

Early bird tickets available online and from The Swan Enford

Poster designed by students at Netheravon All Saints CofE Primary School