

# Enford Newsletter

*What's Happening In and Around East and West Chisenbury,  
Compton, Coombe, Enford, Fifield, New Buildings & Newtown*



*September*  
**2025**



**September**

Thurs	4th	Household waste
Tues	9th	Mixed dry recycling
Wed	10th	Garden waste
Thurs	18th	Household waste
Tues	23rd	Mixed dry recycling
Wed	24th	Garden waste
		Household waste

**October**

Thurs	2nd
Tues	7th
Wed	8th
Thurs	16th
Tues	21st
Wed	22nd
Thurs	30th

All dates are taken from the Wiltshire Council website and are accurate to the best of our knowledge.

Further information is available at

[www.wiltshire.gov.uk/rubbish-and-recycling](http://www.wiltshire.gov.uk/rubbish-and-recycling)

## Dates of note in this edition...

### *September Events*

*2nd Parish Council meeting*

*2nd Arts Society Pewsey Vale Lecture*

*4th Hub in the Church*

*6/7th Great Bustard Open Weekend*

*9th Gardening Club*

*19th Local M.P. in 'Dog & Gun' Netheravon*

*20th Danny Kruger, MP in Village Hall*

*23rd Film Group:*

# Contents

**The next Newsletter deadline is**  
**Wednesday**  
**17th September**

Waste Collection/Dates of Note	2
Contents/ Deadline/Wedding	3
Church Team Message	4
Church Services/Help Needed	5
Village Hall Activities	6
Gardening Club	7
Film Club	8
The Swan	9 - 10
Fete Report/winners & Thanks	11-12
MP Visit/Hub in Church	13
Great Bustard Group	14
Recipe of the Month	15
E Scooters	16
Arts Society/Stars Appeal	17
Eat Nourish Love Fair	18
Rockbourne Fair/ Bingo	19
Enford Community Fund/Parish Council Meetings	20
Local Support & Information	21-23
Police CC / Advertising	23-33
Village Committees	34
Useful Numbers	35
Bra Collection Charity	36

Emails are preferred with editable attachments, Word documents, so that we can fit them into the available space.

[enfordnewsletter@gmail.com](mailto:enfordnewsletter@gmail.com)

However, they can also be given to a Committee member but all items, however they are submitted, must be with us by the deadline and signed. We will withhold the author's name if requested.

Enford Newsletter Committee reserves the right to reject or omit from publication any material that is considered by majority of Committee Members to be detrimental to any person; not in the best interests of the community as a whole or inappropriate for this medium.

## ***Congratulations***

*and very best wishes to*

*Eleanor Hiskett and*

*Harry Henley on their*

*wedding, held at*

*All Saints Church Enford*

*on 12th July*

*We wish them every  
happiness as they start  
their new lives together.*



## Thoughts from Rev. Philip Bromiley

As September begins, it's the start of a new term, a new class, perhaps even a new school. Settling in and making friendships will be uppermost in the minds of many. Don't we love the things children say and do? They can bring a lump to your throat or a pain in the neck! One of the most difficult aspects of childhood is the discovery that some children can be cruel (never our own!). The immortal phrases "*I don't want to play with you*" or "*I don't want to be your friend anymore*", breaks the heart of an eaves-dropping parent. A lovely modern playground invention is a BUDDY BENCH. Many schools in our part of the county have them. They ensure that any child who can't find someone to play with can sit on the bench until they are spotted by another willing to come alongside them. Perhaps in church, instead of a Buddy Bench, we ought to have a Pally Pew, for those who want someone to chat to after a Service?

The Christian faith begins with friendship. Jesus says "Come to me" and in doing so, invites us to be His friends. People come to Jesus in different ways, rarely stumble upon him by accident. Can we point somebody to discover their own friendship with Jesus?

Imagine going to a strange town and looking for a railway station. There's a chance we may see the railway station straightaway, but generally we will see various clues that will help us find it. We might see a pub called the 'Station Arms', or a signpost that says 'Station Road', or a person walking briskly with a suitcase in one direction. These things point us to the station. This is the job of a Christian. To signpost others to their friend in Jesus. Did you hear about the Station Master who fell in love with a Duchess on the platform? They had a big wedding and decided to hold the reception in the room above the signal house. There were so many guests the floor nearly caved in, which goes to show, never marry above your station! But I digress. George Elliot wrote this about friendship:

*Oh, the comfort, the inexpressible comfort of feeling safe with a person, having neither to weigh thoughts, nor measure words, but to pour them all out just as they are, chaff and grain together knowing that a faithful hand will take and sift them, keep what is worth keeping, and then, with the breath of kindness blow the rest away.*

Jesus said, "Come to me all you who weary and carry heavy burdens and I will give you rest..." He also said, "Greater love has no-one, than to lay down his life for his friends."

Blessings,  
Rev Philip Bromiley

**For more information about the Avon River Team Churches contact:**

The Team Office: 01980 655457 [www.avonriverteam.org.uk/](http://www.avonriverteam.org.uk/)

Rev. Philip Bromiley: 01980 258549 or [philip@avonriverteam.org.uk](mailto:philip@avonriverteam.org.uk)



## ENFORD CHURCH SERVICES



### September

Sunday 7th	9:30am	Holy Communion
Sunday 14th	10:30am	Team service Figcheldean
Sunday 21st	9:30am	Harvest Festival
Sunday 28th	6:00pm	Evensong

### October

Sunday 5th	9:30am	Holy Communion
Sunday 12th	10:30am	Team Service
Sunday 19th	9:30am	Breakfast Church
Sunday 26th	6:00pm	Evensong

Please join us at our family friendly Harvest Festival Service on Sunday September 21st followed by a delicious breakfast. Everyone is welcome. We will be collecting for the Durrington Foodbank which offers help and support to many families in the area. Donations of tinned or packet foods would be gratefully received, and can be brought to the service or left at church.

Don't forget that if you would prefer to worship quietly in your own home, we have a short Compline Service at 8pm each Sunday...a wonderful way to end the week and set yourself up for the week ahead. Ask for the link on Facebook or email [avonriverteam@hotmail.com](mailto:avonriverteam@hotmail.com)

### *Help Needed*

We are looking for help in producing the Enford Newsletter. At the moment we have just one person who does all the collating, and we are looking for people to help, either regularly or to provide back up on an occasional basis.

Computer skills are essential and a willingness to become familiar with publishing programs is also important.

If you feel you may be able to help please contact us on [enfordnewsletter@gmail.com](mailto:enfordnewsletter@gmail.com) or speak to any member of the committee, listed on page 34.



## ENFORD VILLAGE HALL & RECREATION GROUND

**Private Parties: The Village Hall is the perfect venue for Weddings and Special Anniversaries or Birthdays. It is also ideal for Childrens' Parties and Christenings – or any other excuse for a celebration!**

Please contact Booking Officer [enfordvillagehall@btinternet.com](mailto:enfordvillagehall@btinternet.com) for information or visit the Village Hall entry on the website [www.enfordnewsletter.org](http://www.enfordnewsletter.org)

Day	Activity	Time	Contact
Mon	<b>Post Natal Yoga</b>	10.30 a.m. to 11.30 a.m.	Marie Hanley Mob: 07871 302303 email <a href="mailto:mamawaveyoga@gmail.com">mamawaveyoga@gmail.com</a>
	Yoga	6.00 p.m. – 7.00 p.m.	Emma Pettitt Tel: 01980 670510 <a href="mailto:emma@petittbros.co.uk">emma@petittbros.co.uk</a>
	<b>Pregnancy Yoga</b>	7.30 p.m. – 8.45 p.m.	
Tues	Enford Film Club	Film information and dates are published in the Newsletter each month.	Theresa Horsey <a href="mailto:etphorsey@gmail.com">etphorsey@gmail.com</a> or <a href="mailto:enfordvillagehall@btinternet.com">enfordvillagehall@btinternet.com</a>
Tues	Gardening Club	<b>7pm - 9pm</b> 2 <sup>nd</sup> Tuesday in the month. Full details in the Newsletter club item each month.	Steve Stringer 07899 758222 <a href="mailto:steve.stringer@outlook.fr">steve.stringer@outlook.fr</a> Fanny Middleton Tel: 01980 671645 <a href="mailto:fannysurtees@btinternet.com">fannysurtees@btinternet.com</a>
Tues	Parish Council	Please check PC item in newsletter each month or PC website for dates.	Parish Clerk Tel: 01980 670034 <a href="mailto:clerk@enfordparishcouncil.gov.uk">clerk@enfordparishcouncil.gov.uk</a> <a href="http://www.enfordparishcouncil.gov.uk">www.enfordparishcouncil.gov.uk</a>
Wed	Short Mat Bowls	<b>7pm - 9:30pm</b> September – April	David Spencer Tel: 01980 670526 <a href="mailto:spencersgb@yahoo.co.uk">spencersgb@yahoo.co.uk</a>
Thur	Pilates	<b>9am – 10am</b>	Nicci Caswell Tel: 01980 625245 <a href="mailto:nicci@thecaswells.uk">nicci@thecaswells.uk</a>
Sat	Junior Football Club	<b>10am– 11am</b> Recreation Ground	Steve Todd <a href="mailto:stodd@qinetiq.com">stodd@qinetiq.com</a>

# ENFORD GARDENING CLUB



## “Pests and Diseases Live”

with **Ray Broughton** – bring a sample to be identified

**Tuesday 9<sup>th</sup> September 2025**

Bring and buy plant stall, Raffle  
Tea and coffee

7.00 for 7.15 pm Enford Village Hall  
Entrance £5. Everyone Welcome!

Contact [steve.stringer@outlook.fr](mailto:steve.stringer@outlook.fr) Tel 07899 758222



ENFORD FILM EVENINGS NEW SEASON

INAUGURAL LIVE STREAMING

TUESDAY 23<sup>rd</sup> SEPTEMBER AT ENFORD VILLAGE HALL

RICHARD OSMAN'S THURSDAY MURDER CLUB

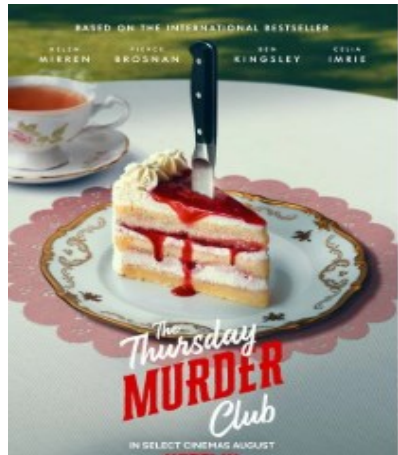
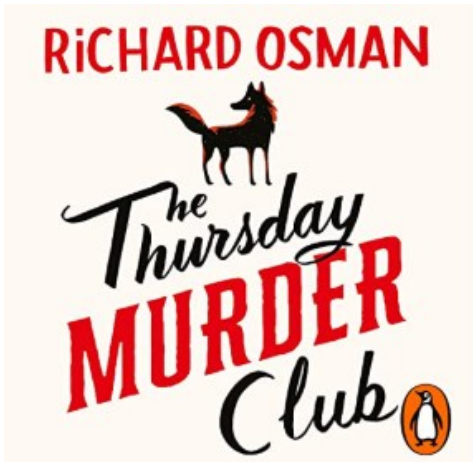
Come and enjoy an evening of comedy and sleuthing with the stars – Helen Mirren, Pierce Brosnan, Ben Kingsley, Celia Imrie, David Tennant, Jonathan Pryce, Richard E Grant, and Tom Ellis.

Doors open at 6.30 for drinks and nibbles for 7.15 start.

Running time. 1 hour 40 minutes.

Tickets £8 to include a glass of wine and nibbles!

October film will be on 28<sup>th</sup>. Please do let us have any suggestions for future films.





## *The Swan, Enford.*

The Swan is once again open for business, serving drinks to locals and beyond via an interim, village led, operation. Despite a calculated lack of advertising, opening weekend was tremendously successful - selling out of IPA, lager, cider and even some of the gin! None of this would be possible without some truly amazing community spirit and the coming together of an army of volunteers. This just goes to show what an asset The Swan is to our parish - not just a place for drinking (and eating) but a hub that brings the community together. It's an asset we are lucky to have and, clearly, determined to keep.



Reopening The Swan in the way we have is only possible with the help and hard work of all the volunteers, so a big hearty thank you to all of you! No matter how big or small your contribution, it would not have been possible without you. I know this sounds repetitive, but it simply can not be stressed enough the amount of hard graft, planning and organising that has gone into this.

Very special thanks are in order for certain people who have gone above and beyond in the work, time and dedication they have put into making this happen:

*Our Current Opening Times are:*

*Thursday 6 - 11pm - quiz night!*

*Friday 4 - 11pm*

*Saturday 12 - 11pm*

*Sunday 12 - 6pm*

## *The Swan, Enford; continued*

Those deserving of special mention are, in no particular order:

**Geraldine Symonds** for heading up the team of gardeners to make the outside space stunning once again.

**Paul Buttery** for heading up the team of fixers and painters to make the inside space bright and welcoming once again.

**Simon Campbell** for putting the project in motion and helping to organise the funding and **John MacKay** for supporting the project so that it could go ahead.

**Clive Bullen, Gareth Rowe and Iris Daunt-Withers** for making up the operations committee to deal with the actual day to day running of the pub itself - licensing, ordering, compliance, cellar maintenance, staffing and training....

Hopefully, a long term solution can be found quickly, in the meantime, please come and support all the wonderful volunteers who have worked so hard to keep The Swan open and loved.

## *Thank you!*



## *Sunshine, Showers, and Smiles all round!*

The Enford Summer Fete brought together joy, community spirit, and just enough unpredictable British weather to keep us on our toes.

The Enford Community Fund say a huge thank you to everyone who helped make it such a success — our amazing volunteers, superstar cake bakers, talented plant growers, the village hall team, local schools (especially Netheravon and Rushall), All Saints Church, Enford Parish Council, our compère Sue Davies from BBC Radio Wiltshire, and of course, our fantastic local communities for turning up in such numbers.

We had over **50 brilliant volunteers, 14 local traders, organisations, and charities**, and **over 500 people** enjoying the day's festivities. Rain or shine, you brought the atmosphere — and we couldn't have asked for more!

A special shout-out goes to **Danella Chamberlain**, who was all set to run our much-anticipated dog show in Enford. Sadly, the hot weather meant it had to be cancelled — but Danella didn't let that stop her! She hosted it at the Upavon Fete in July, raising an incredible £178 for the community!

Thanks to the profits from the fete and the dog show, the Enford Community Fund will continue supporting local projects across the parish. Information can be found later in the newsletter on how you can apply for funding.

And finally — we'd love to see even more friendly faces helping behind the scenes next year. If you'd like to get involved, come and chat with one of the team, or drop us an email at **EnfordFund@gmail.com**

Here's to another year of community spirit, fun, and perhaps — just perhaps — some cooperative weather!

*Carolyn, Chris, Katie, Richard, Rob & Tracy*

*The Enford Community Fund*

**Date for your diary: Enford Bonfire & Fireworks**  
returns on **Saturday 25 October**.



## *Summer Fete Raffle Winners*

The Enford Fund has the names and ticket numbers of the raffle winners however they have decided not to print them, as it isn't a requirement of the small society lottery. The list is available on request by contacting Enford Fund committee members or emailing [EnfordFund@gmail.com](mailto:EnfordFund@gmail.com)

## *Summer fete Photography Competition*

Here is a list of the winners for the photography competition. Please note that they are not in any special order as they are equal winners, one photograph will be used to illustrate each month on the calendar.

**Jane Young, Nick Young, Barnaby Briscoe, Paul Buttery, Ben Briscoe, Anne Heath, Sophie Briscoe, Craig Fisher, Ian Briscoe, Caroline Stagg, Katie Briscoe, Lyn Riche.**

The calendar will go on sale at this year's bonfire and fireworks event and this will be the first time the calendar and the photographs will be seen as a collection. They will be featured in the newsletter, starting in November



## *Amazing Field Fire Response.*

A huge and heartfelt thank you to everyone who helped when our field caught fire last weekend. Everyone, from the fire brigade, the Waight family who turned up with cultivators to help, all the many villagers who rallied to help their neighbours contain the fire, Nik and Sheriff up in the field beating the flames with their jackets, and others with hoses damping down the thatch on the nearby houses.

It was truly a joint community effort which, without everyone's contribution, could so easily have had a very different outcome. **Thank you, Jane Young**



## *Your MP coming to Enford Village Hall*

Danny Kruger, the MP for East Wiltshire, will be holding a surgery for constituents in Enford village Hall on the morning of

**Saturday, September 20th.**

MPs can assist constituents with issues regarding their housing, health, benefits, community, local government or other agencies.

This is an opportunity to meet your Member of Parliament and discuss national, local or personal issues which are important to you.

Danny is also hoping to hold a more informal drop-in, at the **Dog and Gun** in **Netheravon** on **Friday, September 19th** from **6pm** onwards.

More details on his website - [www.dannykruger.org.uk](http://www.dannykruger.org.uk) .

If you would like a surgery appointment between **10am and 11.30am** on Saturday, **September 20th**,

please email [danny.kruger.mp@parliament.uk](mailto:danny.kruger.mp@parliament.uk), including your full name, address and postcode, with the subject 'Enford surgery'.

## **The Hub in the Church**

**Enford's Community Café  
in All Saints Church**

**1st Thursday of the month**

**The next Hub is on 4th September**

**From 10 — 11:30**

**Tea, Coffee & Homemade Cakes**

**A place to meet your friends  
and make new friends.**





# Open Weekend 2025

Sat and Sun 6<sup>th</sup> & 7<sup>th</sup> September 10am to 4pm

Enford Village Hall      SN9 6DD



Speakers all through weekend

Trips to look for the birds (1 hour duration  
prebook through web site, tickets £15pp)  
Great Bustard displays and information  
Project updates  
Famous Bustard shop  
Refreshments

## GREAT BUSTARD GROUP



**Presentations include:**

Prof. Nigel Collar  
(IUCN Bustard  
Specialist Group)

Owen Williams (Land  
Management for  
Conservation)

Richard Snow (DIO)  
Bustards in the Army  
Training area Africa.

Great Bustard Gin  
tasting.



## *Free Event*

Keep an eye on [www.greatbustard.org](http://www.greatbustard.org) for details

# *Recipe of the Month:*

## *Spiced Cauliflower and Lentil Salad*

- 1 medium (1kg) cauliflower in bite sized florets
- 2-3 tablespoons olive oil
- 125g Persian red lentils or Puy lentils
- 1 teaspoon ground cumin
- 1 teaspoon ground coriander
- 1 brown onion, finely diced
- 1 clove garlic, finely chopped
- 200g low fat natural yogurt
- ½ cup baby spinach leaves
- ½ cup coriander leaves, finely chopped
- ½ cup mint leaves, finely chopped
- juice of ½ lemon
- salt and pepper



Heat oven to 200C/400F. Place the cauliflower on two baking trays and drizzle with oil and season with salt and pepper. Roast the cauliflower until golden and starting to crisp.

Meanwhile, cook the lentils a large pot of boiling water (red and Puy lentils don't need soaking) for about 20 minutes until cooked. Drain and rinse.

In a dry frying pan, heat the cumin and coriander until fragrant. Add olive oil and saute the onion till golden, add the garlic cook for another couple of minutes. Add this mix to the lentils while they are still warm.

Cool the mix, add to cauliflower. Once cool, add yogurt, baby spinach, coriander, mint, lemon juice, salt and pepper and a drizzle of olive oil to help it to come together. Toss it gently to distribute.





# E-scooters & electric bikes - do you know the law?



**E-scooters** are classed as motor vehicles under the Road Traffic Act 1988.

You therefore need to have:

- **A driving licence**
- **Insurance**
- **MOT and Tax**

It is against the law to ride them on the roads/ pavements or in public spaces. This includes car parks and play parks.

Legal **electrically assisted pedal cycles** can be ridden by people over 14 years old. To be compliant with the law:

- It must have pedals which you need to turn to propel it
- It should have a motor of 250 watts or less
- The electrical assist should cut out at 15.5 mph

If it doesn't meet these criteria, it is classed as a motor vehicle and needs a licence, insurance, MOT and tax to be ridden legally.

**If you use an e-scooter or e-bike against the law, you run the risk of it being seized and destroyed. You may also be prosecuted.**



West Midlands  
**pcc**



**The Arts Society - Pewsey Vale** will begin its autumn lecture series at the **Bouverie Hall** at 2.30pm on **Tuesday 2nd September**.

The first lecture is entitled **"Dismantling the Devil's Acre - Slums that shamed Victorian London"** Vivid social history. **Charlie Forman**, a London walking tour guide and lecturer, will talk about the struggle to clear Victorian London of its most notorious slums like the Devil's Acre. We will learn how the slums came about, who lived there and why. **The Devil's Acre**, on land mostly owned by Westminster Abbey, was demolished and rebuilt in the 1880's and that housing still stands today. Doors open at **2.00pm** for refreshments and conversation and the lecture begins at **2.30pm**. Visitors are very welcome - £7 on the door, payable by card or cash

Please visit our website, [taspv.org.uk](http://taspv.org.uk) for further information.



***Dick Whittington Goes Trekking***, a charity pantomime written, performed and produced by people who met through Stars Appeal fundraising treks, has raised more than £4,000 for Salisbury Hospital's charity.

The cast and crew included an eye consultant, financial advisor, IT director, bookseller, dance teacher and two podiatrists! The group had never put on a pantomime so were hugely grateful for the help of Winterslow Drama Group. Many local businesses supported the show with donations, but it was the audience, almost 200 friends, family, colleagues and locals, who really made the shows a success. They bought refreshments and raffle tickets, and most importantly, they clapped, sang, laughed and joined in from the moment the cast stepped on stage.



## *The Eat Nourish Love (ENL) Autumn Fair 2025*

will take place on **Tuesday 23rd September from Noon - 9pm** and on **Wednesday 24th 9.30 am - 4pm** at **Tedworth Park, Tidworth (SP9 7AH)**. Formerly known as the Early, Early Christmas Fair, the event has been updated and expanded — now offering two fabulous days of shopping, delicious food and drink, supper, champagne, and a line-up of nine expert talks from some brilliant speakers.

This year's talks feature well-known names including **Millie Mackintosh, Dr Louise Newson, Lucinda Miller, Grace Fodor, Lieutenant General Sir Simon Mayall, Emma Mills and Eve Cameron.**

The fair supports two amazing charities **Walking With The Wounded** and **Horatio's Garden** ~ with over 120 hand-picked stallholders.

**Tickets are just £6 online or £7 on the door.** You can book a Talk & Fair Bundle for £22, which includes fair entry across both days and one expert talk of your choice. Additional talks are £16 each. In the evening, is Champagne & Shop at £12 and Supper & Shop at £26. All online bookings are automatically entered into our free prize draw.

You can find out more and book tickets at:

[\[https://www.eventbrite.com/e/1417781024209aff=oddttdtcreator\]](https://www.eventbrite.com/e/1417781024209aff=oddttdtcreator)

## **We need volunteers!**

As part of our Marmalade Connections project, we're looking for friendly volunteers to chat on the phone once a week to someone experiencing loneliness. You will provide them with support finding new activities, social connections and friendships in their community. Volunteers will be involved for up to 15 weeks and full training will be provided.

**Email: [connections@marmaladetrust.org](mailto:connections@marmaladetrust.org)**

**Visit: [marmaladetrust.org](http://marmaladetrust.org) | Call: 07566244788**

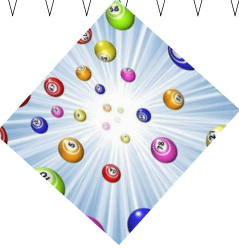
# ROCKBOURNE FAIR

15 - 17 OCTOBER 2025

Salisbury Racecourse  
rockbournefair.org.uk

100+  
STALLS

*THE EARLY CHRISTMAS SHOPPING EXPERIENCE*



**Friends of Netheravon  
school PTF**

**Monthly prize Bingo**

**Netheravon**

**Netheravon Phoenix Hall: 2pm**

**7th September  
5th October  
2nd November  
7th December**



## THE ENFORD COMMUNITY FUND

The Enford Community Fund is a not-for-profit community organisation managed by a small group of local volunteers who organise activities and events across the parish and make donations to benefit the wider community.

Funding is available to support projects and events in the Parish of Enford (which includes Compton, Coombe, East and West Chisenbury, Fifield, New Buildings and Newtown). Applications for awards must be made in writing, by email, to [EnfordFund@gmail.com](mailto:EnfordFund@gmail.com) or by letter to one of the group members (Carolyn Ansell, Katie Briscoe, Tracy Buttery, Rob Hibberd, Richard Petitt, Chris Rose).

The following guidelines will be followed in allocating funds:

1. Submissions will be considered at the next scheduled meeting and within 3 months of the request being submitted.
2. Funding will be made for individual projects and is not designed to allow awardees to become reliant on the award on an annual/regular basis.
3. Awards are made to causes benefitting the community, not specific individuals.
4. No awards will exceed £1,000 in total.
5. For any award to be made, there must be agreement by 75% of the group.

## ENFORD PARISH COUNCIL MEETINGS 2025

[www.enfordparishcouncil.gov.uk](http://www.enfordparishcouncil.gov.uk)

**ALL MEETINGS ARE AT ENFORD VILLAGE HALL**

Day	Date	Time	Meeting
Tuesday	2nd September	7:30pm	Parish Council Meeting
Tuesday	4th November	7:30pm	Parish Council Meeting
Tuesday	25th November	7:30pm	Precept Meeting
Tuesday	2nd December	7:30	Parish Council Meeting

# Local Support & Information

## PEWSEY VALE COMMUNITY CRAFT & TEA ROOM



**OPEN: WED - SAT**

**10.00 - 4.00**



**OLD FORD COURT,  
HIGH ST, PEWSEY  
SN9 5AQ**

Profits donated to local charities; Interested in helping? - Pop in to get a volunteer form.

## Mobile Library Services

Dates and times of all mobile library stops are available online via the website [Libraries - Wiltshire Council](http://Libraries - Wiltshire Council) and printed timetables from the

**Love Reading,  
Love Libraries**

mobile library. We look forward to seeing all our customers when we next visit you.

**Next due in Enford on Friday 19th  
September at 3:25pm for 20 minutes**

Then on these dates  
at the same time.

Friday 17th October  
Friday 14th November  
Friday 12th December  
Friday 9th January  
Friday 6th February

If you've never used the mobile library before it's free to join and you can use your membership card in any Wiltshire Library or online to access free eBooks and magazines.

### Netheravon Library

Open Monday and Thursday 1pm - 5pm.





**Age UK Wiltshire Information & Advice Team**

**0808 196 2424**

[enquiries@ageukwiltshire.org.uk](mailto:enquiries@ageukwiltshire.org.uk).

<https://www.ageuk.org.uk/wiltshire/>

**CrimeStoppers.**

**0800 555111**

100% anonymous. Always.

<https://crimestoppers-uk.org/>

Crimestoppers is not the police.

If you require urgent police attention, please  
**dial 999**

## PARISH DEFIBRILLATOR LOCATIONS

1. Hill House Annex, 9 Longstreet, SN9 6DD Grid ref SU142515  
What3Words - /// Parrot/slid/steadier
2. 2. Red Lion, East Chisenbury SN9 6QA  
What3Words - /// Foal/Thus/Ghost

If you think you need to use a defibrillator, call 999. The Emergency Service will give you the code to get into the cabinet.

See [www.enfordnewsletter.org](http://www.enfordnewsletter.org) for more information and a short video on how to use it.



## FLY TIPPING

If you spot someone fly-tipping in Wiltshire, report the offender to us through our online reporting system -  
<https://www.wiltshire.gov.uk/fly-tipping>.

As a reward for reporting a fly-tipper you could get a **gift voucher of up to £200** following the payment of a Fixed Penalty Notice or a successful prosecution.



## Swindon Domestic Abuse Support Service

**24 hours 7 days a week 365 days a year**

If you are worried about your situation, you can call them in confidence and speak to a real person, not a machine - 01793 610610.

<https://swadomesticabuse.org/>



is independent from the police and you don't have to report a crime to the police to get our help. You can contact us at any time, regardless of how long ago the crime happened.

Call us free on **0808 281 0113** or **08 08 16 89 111**

Email us via the link on the website [victimsupport.org.uk/resources/Wiltshire/](https://victimsupport.org.uk/resources/Wiltshire/) where you will find all the ways you can contact us.



Wiltshire and Swindon

## pcc Tackling Hare Coursing Head-On.

Hare coursing is a brutal and illegal activity continuing to plague our countryside. It's not just a wildlife crime but organised criminal behaviour threatening the safety, livelihoods, and peace of rural communities. Recent incidents, including violent confrontations and property damage, show how serious this issue has become.

I've been vocal in calling for tougher sentencing. The current penalties; unlimited fine & up to six months in prison—are not enough. I've written to the Wiltshire Magistrates Bench and supported national efforts to strengthen sentencing guidelines. Wiltshire Police is responding with a whole-force approach. Our rural crime strategy, including Operation Ragwort, is making an impact. We're working with neighbouring forces to share intelligence and coordinate action. Arrests are increasing, and offenders are being disrupted. The Force's Armed Response Unit is often tasked to respond to these types of offences, as their ability to respond decisively to high-risk situations, such as pursuits and confrontations, the level of response rural communities expect and deserve.

However, we can't do it alone. I urge everyone to keep reporting hare coursing and all rural offences. Your information helps with intelligence, target offenders, and protect our communities. Together, we are making Wiltshire a hostile environment for rural criminals. With your continued support and our determined whole force policing response, we will keep pushing back.

# Advertising

## PET & HOME SITTING

Caring For Your Pets & Home

*Animal lover*

*Experienced*

*Reliable*

*Trustworthy*



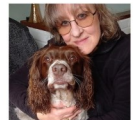
**Fully  
Insured**

*"Sally is our peace of mind...  
I would rather not go away  
if she is not available"*

**Please call  
or email  
for availability**



**Testimonials  
Available**



**SALLY EDWARDS**

**sallyeds@btinternet.com**

**07870 495 225**

# Advertise in this magazine!

[enfordnewsletter@gmail.com](mailto:enfordnewsletter@gmail.com)

## M. EDWARDS BRICKWORK Ltd

All elements of brickwork/blockwork undertaken,  
including extensions, knock throughs,  
repointing, chimney removals retaining walls  
& garden walls

Contact Mark to discuss your requirements

**07977316193 or 01980 630019**

[markedwards1301@hotmail.com](mailto:markedwards1301@hotmail.com)



Alan PierreBotti

## INTERIOR DECORATOR

Tel : 07889 470272

[alanpierrebotti1@gmail.com](mailto:alanpierrebotti1@gmail.com)

[www.alan-pierrebotti.co.uk](http://www.alan-pierrebotti.co.uk)



authorised installer  
**PHILLIP JEFFRIES**  
NATURAL | TEXTURED | SPECIALITY | WALL COUPLINGS



# AKER

FIRE & SECURITY

INTRUDER ALARMS, FIRE ALARMS, FIRE EXTINGUISHERS,  
CCTV, GATE AUTOMATION, FIRE DOOR INSPECTION  
For all your Fire and Security needs  
Tel 07515358875

email [info@akerfireandsecurity.co.uk](mailto:info@akerfireandsecurity.co.uk)



## Why choose Bluebird Care?

We're here so your loved one can stay home, where they want to be. Where things are familiar. Where they feel at ease, where they have the best chance to live a full and comfortable life. Whether you're looking for everyday companionship or more complex care, our highly-trained Care Experts will help your loved ones live the life they want,

**Live-in Care | Home Care | Complex Care**

Call us for a friendly chat on  
0172 251 2989 or email us  
[wiltshiresouth@bluebirdcare.co.uk](mailto:wiltshiresouth@bluebirdcare.co.uk)

**bluebird**  
care®



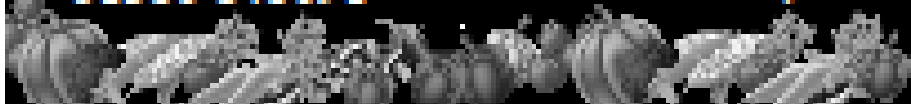


The main advertisement is a collage. The top half shows the exterior of the shop with a sign that reads 'ROOTS FARM SHOP'. Below this, the text 'GROCERIES &amp; IN-HOUSE BUTCHERY' is prominently displayed. Underneath, the 'OPENING HOURS' are listed: 'Mon-Sat: 9.30am-4.30pm' and 'Sunday: 10.00am-4.00pm'. The bottom half of the collage features four small, tilted images: a garden scene, a jar of jam, a field of crops, and a basket of fruit.

Old Potato Yard, Manor Farm, Lydney, Devizes SN10 3PU

01380 848691

hello@roots-farmshop.co.uk



# GRAY & AMOR LTD.

CARPENTRY & PROPERTY RENOVATION

Covering all aspects of property renovation and maintenance.

View our range of services online or call to discuss your project.

**01380 587006 / 01672 596006**

**info@grayandamor.co.uk www.grayandamor.co.uk**



## STITCHCOMBE FOODS

LOCALLY SOURCED MEAT AND OTHER FARM PRODUCE



Grove Farm Butchery  
Thicketts Road  
Mildenhall  
Marlborough  
Wiltshire  
SN8 2FJ  
t: 07928 454564



Scan here to click  
& collect

Our homebred Hereford cattle graze in the Kennet Valley & Savernake Forest, producing exceptional beef that is butchered on farm and sold direct from the Grove Farm Butchery.

We are a full-service butcher supplying local pork, lamb & venison, and English chicken. Our meat boxes represent great value, prices starting at £30.

[www.stitchcombefoods.co.uk](http://www.stitchcombefoods.co.uk)

e: [sales@stitchcombefoods.co.uk](mailto:sales@stitchcombefoods.co.uk)

## MOBILE HAIRDRESSER

Ring Donna

on

07711 579403

## Toe 2 Sole at Home

For all your foot healthcare  
in the comfort of your home.  
For appointment please call

Sousxie Slater  
MCFHP MAFHP  
Tel: 07540433185

## Mend it Matt *Handyman*

Do you need help with anything...

Leaky taps, Broken gates,  
Gardening, Bicycle servicing, Painting,

Any of those things that you either need help  
with or just haven't got round to.

Give me a call and ask. No job too big or small

Matt Jump  
07968 580 804



## EQUIDAE EQUINE SERVICES

18 The Bluestone Centre, Sunrise Way, Solstice Park, Amesbury, Wiltshire, SP4 7YR

T: 01980 731476 E: [equidae-equineservices@outlook.com](mailto:equidae-equineservices@outlook.com)

### Opening Times

Monday to Friday 9.00am – 6.00pm

Saturday 9.00am – 5.30pm

Sunday 10.00am – 2.00pm

Rug Wash and Reproofing Service

Equine Feed-Supplements-Bedding-Hay-Field &  
Stable Accessories-First Aid

To Advertise here

contact

[enfordnewsletter@gmail.com](mailto:enfordnewsletter@gmail.com)

for details and prices.



- › Camera Survey
- › Birds Nests Removed
- › Fully Insured
- › NCSSA Registered
- › NVQ Qualified
- › Friendly Local Service
- › Cows Fitted

Call Sean on 07881 206536

[seanoades@hotmail.com](mailto:seanoades@hotmail.com) [www.so-chimnev-sweeping.co.uk](http://www.so-chimnev-sweeping.co.uk)

## PROFESSIONAL SEWING SERVICES

HANDMADE CURTAINS & ROMAN BLINDS  
CLOTHES ALTERATIONS & REPAIRS

"No job too little – or too large!"

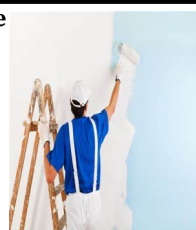


ELS BREWIN  
Woodborough  
01672 851615  
07833 127 328

## SB Paint and Decorate

Over 30 years' experience

Interior & exterior  
painting  
Wallpapering  
Tiling



Contact Shaun on

[sbpaintanddecorate@gmail.com](mailto:sbpaintanddecorate@gmail.com)  
07774 479944



# NURTURE THE SOUL

Sneak to the Red Lion for a post walkie pint (bring the hounds for a complimentary Bonio), we're open from 11am.

Better still, gather some chums and indulge in a long-overdue lazy Saturday afternoon (Scrabble available).

The bar is open into the evenings for sundowners or pre-dinner drinks (black-tie not required). We hope to see you later.



RED LION | EAST CHISENBURY



# Avon Security

MASTER LOCKSMITHS

## Engraving Service Now Available

- > Brass
- > Plastics
- > Aluminium
- > Glass
- > Trophies
- > Gifts

## Free Advice & Quotations On Securing Your Property & Belongings

Key Cutting  
Locks Supplied & Fitted  
Access Control  
Safes  
PVCu Locks  
Master Key Systems  
Lock Repairs  
Door Furniture & Ironmongery  
Transponder Car Keys  
Keys To Code  
Watch Batteries & Straps  
Emergency Call Out Service



**01980 626000**

21, Salisbury Street, Amesbury, Wiltshire, SP4 7AW  
**www.avonsecurity.net**



## Garden Transformations

## Hard Landscaping Specialist

Qualified and accomplished in all aspects of  
garden landscaping with 16 years experience.  
Call or email Dan Withers to discuss your needs.

07833 248269 [dwithers.landscaping@gmail.com](mailto:dwithers.landscaping@gmail.com)

## Centrally Heated Shepherd's Hut B&B in Haxton

5\* Airbnb Reviews. Tranquil & private spot in cottage garden among trees, overlooking a meadow with its own secluded outside space and parking. Fully insulated, underfloor heating, flushing loo, shower, mini kitchen, double bed, WiFi & TV/DVD. Sleeps two. Suitable for year round occupancy.

Contact Helen on  
**07974 966440**  
[h.gouldcooper@gmail.com](mailto:h.gouldcooper@gmail.com)



A photograph of a green sign for 'The Village Store' mounted on a brick wall. The sign features the 'Londis' logo on the left, a tree icon, and the text 'The Village Store' in large white letters. A small bouquet of white flowers is visible on the right side of the sign.

## Upavon Village Store

*"Everything You Need Locally"*

- Fresh fruit & veg, quality meat & fish
- Local produce, fresh bread & coffee
- Wines & spirits, cold beer & cider
- Newspapers & magazines, tobacco & vapes
- Lottery & scratch cards, e-top ups
- Full "top-up" shop available
- Post Office (Mon - Sat: 9am - 1pm)
- We look forward to seeing you!

Mon - Sat: 7am - 7pm  
Sat: 8am - 7pm  
Sun: 8am - 6pm

11 High Street  
SN9 6EA  
01980 630268



## Wood Turning Gift Certificates



Gift Certificates are available for both half and one day wood turning taster sessions. Coombe based professional turner George Shapland offers a bespoke package of one to one or one to two training for anyone wishing to have a go.

In addition to offering tuition, George has a range of hand turned items for sale, mostly from local timber and also takes commissions.



Contact: George Shapland  
01980 671321  
[george@butterwood.co.uk](mailto:george@butterwood.co.uk)  
[www.butterwood.co.uk](http://www.butterwood.co.uk)



## PEST CONTROL SERVICE

[www.molegone.co.uk](http://www.molegone.co.uk) 

**Moles, Squirrels, Rodents  
& Wasps/Hornets**

Covering South Wiltshire and the  
Dorset/Somerset/Hampshire borders

CRB Checked, Fully Insured  
Yearly/Monthly Contracts Available  
No Catch No Fee on Moles and  
Squirrels, trading since 2010

**Contact Roy on 01722  
716972 or 07798 570443**

Private Residences, Local Councils, Places of  
Worship, Equestrian & Commercial Sites, Golf  
Clubs & Farms are amongst my clients

## JAGUAR EXECUTIVE TAXI

### PRIVATE TAXI SERVICE

All distances covered  
at reasonable rates

**Mob: 07909386775**

**Booking Mob: 07825233216**

Email:

[janeruddhughes@sky.com](mailto:janeruddhughes@sky.com)



Bespoke Fashion Design and  
Dressmaking for any occasion.  
For more details contact  
Ramona Edwards  
[rhensel85@gmx.de](mailto:rhensel85@gmx.de) // 07827597084

Oil Boiler Servicing  
Commissioning & Repairs

Call

**Graham C**

**Brown & Son**

**01980**



**622737**

Fully Qualified

Fully Insured

Experienced Technician



**Plumbing, Heating, Electrical &  
Renewable Energy**

Solar Thermal & PV, Air & Ground Source Heat Pumps,  
Ventilation, Boiler Replacements. Domestic, Commercial &  
Industrial Contractors. Family Business Established 1970.

Free Estimates and Advice:

Tel: 01980 670667 Fax: 01980 670811

[www.rgvengineering.co.uk](http://www.rgvengineering.co.uk) [info@rgvengineering.co.uk](mailto:info@rgvengineering.co.uk)



### MODERN & TRADITIONALLY DESIGNED MEMORIALS

**M J SLY**

*Monumental Stonemason*

*New Memorials, Additional Inscriptions*

*Restorations, Free Home Visits*

*Free Brochure*

*Marlborough (01672) 516797*

Email: [mailto:martin@mjsly.co.uk](mailto:mailto:martin@mjsly.co.uk)

Website: [www.mjsly.co.uk](http://www.mjsly.co.uk)

Workshop & Showroom at Pelham Court,  
London Road,  
Marlborough, Wiltshire

# Digger & Mojo

DECORATIVE ANTIQUES EMPORIUM  
AND REPAIR WORKSHOPS



*We sell + restore Antiques + revamp your furniture*

*Mending - Painting - Reupholstery*

SHOP OPEN FRIDAYS TO SUNDAYS 11AM-5PM

WORKSHOPS OPEN 7 DAYS BY APPOINTMENT

CALL AHEAD ON 01672 851 510

WOODBOROUGH GARDEN CENTRE, PEWSEY, SN9 5PF

[www.diggerandmojo.com](http://www.diggerandmojo.com)

## VILLAGE COMMITTEES

**PARISH COUNCIL** [www.enfordparishcouncil.gov.uk](http://www.enfordparishcouncil.gov.uk)

<b>Chairman</b>	Richard Roberts	
Vice Chairman, PCC, Rights of Way	Mark Hiskett (PROW)	670955
Roads and Highways	Martin Farrow	
Planning	Peter Cliffe-Roberts	671676
Parish Clerk	Elizabeth Harrison	670034
Playpark, Village Amenities	Jane Young	670532
and Youth Representative		
Neighbourhood Watch and	Charlotte Clark	670276
Police Liaison		
Tidworth Area Board and	Anthony D'Arcy Irvine	670501
Village Hall Representative		
No Specific role	Bruce Waight	670113
	Pat Holdway	671792
	Rob Hibberd	
Flood Warden	Mark Symonds	

### ENFORD COMMUNITY FUND

Katie Briscoe	Tracy Buttery
Rob Hibberd	Carolyn Ansell
Richard Pettitt	
Chris Rose	

### PAROCHIAL CHURCH COUNCIL

<b>Church Wardens</b>	Vacant
<b>Treasurer</b>	Richard Leakey
<b>Secretary</b>	Fi Leakey
<b>Council Members:</b>	Mary Burdick
	Fanny Middleton
	Sue de Candole

### NEWSLETTER

<b>Chair:</b>	<b>Vacant</b>
<b>Vice Chair &amp;</b>	Jane Young
<b>PC Rep:</b>	
<b>Secretary &amp;</b>	Jeni Scott-
<b>Advertising:</b>	Dalgleish
<b>Treasurer:</b>	Gareth Rowe
<b>Village Hall Rep:</b>	Jacqui Elkins
<b>Communication</b>	Theresa Horsey
<b>Compiler &amp; Contents</b>	Claire Mingham
<b>Social Media</b>	Iris Daunt-
<b>Officer:</b>	Withers
<b>Website Officer</b>	Kim Riche
<b>Committee:</b>	Shona Stewart

### VILLAGE HALL

<b>Chairman and</b>	Judy D'Arcy-Irvine
<b>Booking Officer</b>	<b>01980 670501</b>
<b>Vice Chairman</b>	<b>Vacant</b>
<b>PC Rep</b>	Jane Young
<b>Secretary &amp; Grounds</b>	Hamish Scott-
<b>Officer</b>	Dalgleish
<b>Camera Club</b>	Jane Young
<b>Newsletter</b>	Jacqui Elkins
<b>Property Officer</b>	David Spencer
<b>Gardening Club</b>	Rosemary Cox
<b>Short Mat Bowls</b>	David Spencer
<b>Junior Football Club</b>	Ollie Staggs

## USEFUL NUMBERS

### DOCTORS

DURRINGTON	Avon Valley Practice Surgery	01980 652378
LARKHILL	Larkhill Medical Centre	01980 845266
UPAVON	Avon Valley Practice Surgery, Fairfield	01980 630221

### HOSPITAL

SALISBURY DISTRICT HOSPITAL	01722 336262
-----------------------------	--------------

### OTHERS

ELECTRICITY	105
ENVIRONMENTAL AGENCY	0800 80 70 60
FLOOD LINE	0345 988 1188
	or 0345 602 6340
GAS	0800 111 999

### POLICE



**DURRINGTON LINK** LINK (Durrington & District) 07484533559

### SCHOOLS

DURRINGTON, Avon Valley Academy	01980 652467
NETHERAVON, All Saints' C of E Primary	01980 670339
RUSHALL, Rushall C of E Primary	01980 630360
PEWSEY, Pewsey Vale Secondary School	01672 565000

**ENFORD PARISH COUNCIL WEBSITE** [www.enfordparishcouncil.gov.uk](http://www.enfordparishcouncil.gov.uk)

**WILTSHIRE COUNCIL** [www.wiltshire.gov.uk](http://www.wiltshire.gov.uk) and choose the appropriate service.

## HQ SALISBURY PLAIN TRAINING AREA

**999** MOD Police Control Room - **Crime in progress**

**01980 674951** to call 24hour Range operations - *To report suspicious activity or non-emergency crime.*

**01980 620819** Complaints Line - ***The only way to make a complaint.***

**0800 022 3334** - Landmarc National Service Centre - *To report damage to or fly-tipping on the training area ONLY.*

For Salisbury Plain Training Area News, giving times of live firing, current and upcoming exercises go to

<https://www.gov.uk/government/publications/salisbury-plain-training-area-spta-newsletter>

**Health & Safety reminder for all Military Training Areas & Ranges:**

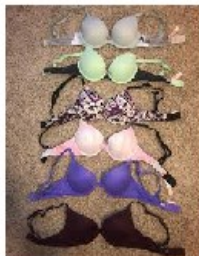
Do not touch or tamper with Military debris. Wash your hands before you eat. Clean your footwear before you enter your car or home.





## BRA COLLECTION POINT

Do you need to clear out your ill fitting, unwanted old bras? If so, then this initiative may be for you.



Raising funds for Breast Cancer Research, around £700 for every tonne of bras donated also supports women's co-operatives in developing countries, where the bras are distributed to help women earn a sustainable income.

In October 2022 Emily started a boutique in Devizes Amelie Lingerie and started collecting old, unwanted bras for donation. Earlier this year, Emily was diagnosed with Stage 3 aggressive triple-negative breast cancer and what started as a charitable passion became a deeply personal journey.

*Please place all unwanted Bras (any size/style/condition) for donation to the Against Breast Cancer Charity, in the **pink** collection boxes outside the gates at Mallard House, Coombe or outside "Swancote" Longstreet, Enford*

*This initiative was inspired by Emily's strength and determination*

*Thank you so much for supporting this worthy cause.*