

May 2024

# Enford Newsletter

*What's Happening In and Around East and West Chisenbury,  
Compton, Coombe, Enford, Fifield, New Buildings, Newtown*



*May 2024*





May		June
Thurs 2nd	Household waste	
Tues 7th	Mixed dry recycling	Tues 4th
Wed 8th	Garden waste	Wed 5th
Thurs 16th	Household waste	Thurs 13th
Tues 21st	Mixed dry recycling	Tues 18th
Wed 22nd	Garden waste	Wed 19th
Thurs 30th	Household waste	Thurs 27th

All dates are taken from the Wiltshire Council website and are accurate to the best of the Collator's knowledge.

Further information is available at

[www.wiltshire.gov.uk/rubbish-and-recycling](http://www.wiltshire.gov.uk/rubbish-and-recycling)

## Dates of note in this edition...

### May

- 7th Parish Council AGM*
- 7th Arts Society, Pewsey Lecture*
- 11th Avon & Bourne Valley Art*
- 12th Exhibition @ Figheldean*
- 14th Enford Gardening Club: Cut Flowers*
- 17th Amesbury Abbey Choir Concert*
- 21st Enford Film Club: 'White Mischief'*
- 22nd Drop-in Session re: Enford Fete.*

# Contents

Waste Collection/Dates of Note	2
Contents/Next Deadline	3
Church Team Message	4
Church Services/Announcement	5
Village Hall Activities	6
Gardening Club	7
Film Club	8
Chisenbury Priory Open Garden	9
Enford Fete Help request	10
Art Exhibition/ Hello & Goodbye	11
Film Club News/Plant Sale	12
Arts Society lecture/Broadband	13
Amesbury Abbey Concert	14
Parish Council Notices	15
Recipe of the Month	16
D-Day information & Event	17
Good Neighbour/Home Start	18
Stars Appeal	19
Enford Community Fund/Parish Council Meetings	20
Local Support & Information	21/23
Dog walkers Info & Advertising	24/34
Village Committees	35
Useful Numbers	36

## The next Newsletter deadline is Wednesday 15th May

Emails are preferred with editable attachments, Word documents, so that we can fit them into the available space.

[enfordnewsletter@gmail.com](mailto:enfordnewsletter@gmail.com)

However, they can also be given to a Committee member but all items, however they are submitted, must be with us by the deadline and signed. We will withhold the author's name if requested.

Enford Newsletter Committee reserves the right to reject or omit from publication any material that is considered by majority of Committee Members to be detrimental to any person; not in the best interests of the community as a whole or inappropriate for this medium.

**PLEASE NOTE THE  
NEXT NEWSLETTER  
WILL BE A DOUBLE  
ISSUE; COVERING  
JUNE AND JULY**





*Thoughts from Rev. Gale Hunt Team Vicar*

## **Happy Easter! Christ is Risen!**

May 5th is Easter Sunday for Christians who attend Orthodox churches, as they follow a different calendar from us. In the Church of England we are still in the Easter season until almost the end of May. On Thursday May 9<sup>th</sup> we celebrate Ascension Day (40 days after Easter day), as we remember Jesus returning to heaven. When I was at school (many years ago) we used to have a half day holiday and the shops used to close too, because it was Ascension Day. Perhaps some of you remember that happening and how you used to spend the time.

The Easter season finishes on May 19<sup>th</sup> as we celebrate Pentecost, the coming of the Holy Spirit on the first disciples. It is 50 days after Easter (the name comes from the Greek *pentekoste*, "fiftieth"). It is also sometimes called Whitsun. Pentecost is seen as the birthday of the Christian church, so we often have great celebrations on that day and wear something red (the colour we use in church for the Holy Spirit).

Then on May 26<sup>th</sup> the party continues as we celebrate Trinity Sunday. The Trinity is a core Christian belief rather than an event – that God is three and God is one – one God, in three persons – Father, Son and Holy Spirit. It's a belief that people find hard to get their heads around, but a great illustration is in the book and film 'The Shack', so do read the book or watch the film if you get a chance.

So May is a month for celebrating, not only for Christians, but for all of us as we hopefully welcome the warmer weather, the new life appearing in creation and enjoy spending more time out-of-doors appreciating the beauty of the place where we live.

Best wishes

Gale.

**For more information about the Avon River Team Churches contact:**

The Team Office: 01980 655457 [www.avonriverteam.org.uk/](http://www.avonriverteam.org.uk/)

Rev. Gale Hunt: 01980 670326 or [gale@avonriverteam.org.uk](mailto:gale@avonriverteam.org.uk)

Rev. Philip Bromiley: 01980 258549 or [philip@avonriverteam.org.uk](mailto:philip@avonriverteam.org.uk)





## ENFORD VILLAGE HALL & RECREATION GROUND

**Private Parties: The Village Hall is the perfect venue for Weddings and Special Anniversaries or Birthdays. It is also ideal for Childrens' Parties and Christenings – or any other excuse for a celebration!**

Please contact Booking Officer [enfordvillagehall@btinternet.com](mailto:enfordvillagehall@btinternet.com) for information or visit the Village Hall entry on the website [www.enfordnewsletter.org](http://www.enfordnewsletter.org)

Day	Activity	Time	Contact
Mon	Yoga	6pm - 7pm	Emma Pettitt Tel: 01980 670510 <a href="mailto:emmampettitt@gmail.com">emmampettitt@gmail.com</a>
Tues	Enford Film Club	Film information and dates are published in the Newsletter each month	Theresa Horsey <a href="mailto:etphorsey@gmail.com">etphorsey@gmail.com</a> or <a href="mailto:enfordvillagehall@btinternet.com">enfordvillagehall@btinternet.com</a>
Tues	Gardening Club	7pm - 9pm 2 <sup>nd</sup> Tuesday in the month. Full details in the Newsletter club item each month.	Steve Stringer Mob: 07899 758222 <a href="mailto:steve.stringer@outlook.fr">steve.stringer@outlook.fr</a>  Fanny Middleton Tel: 01980 671645 <a href="mailto:fannysurtees@btinternet.com">fannysurtees@btinternet.com</a>
Tues	Parish Council	Please check PC item in newsletter each month or PC website for dates.	Parish Clerk Tel: 01980 670034 <a href="mailto:clerk@enfordparishcouncil.gov.uk">clerk@enfordparishcouncil.gov.uk</a> <a href="http://www.enfordparishcouncil.gov.uk">www.enfordparishcouncil.gov.uk</a>
Wed	Short Mat Bowls	7pm - 9:30pm September – April	David Spencer Tel: 01980 670526 <a href="mailto:spencersgb@yahoo.co.uk">spencersgb@yahoo.co.uk</a>
Thur	Pilates	8:30am – 9:30am	Nicci Caswell Tel: 01980 625245 <a href="mailto:nicci@thecaswells.uk">nicci@thecaswells.uk</a>
Fri			
Sat	Enford Junior Football Club	10am– 11am Recreation Ground	Steve Todd <a href="mailto:stodd@qinetiq.com">stodd@qinetiq.com</a>



# ENFORD GARDENING CLUB

**“Flowers for the cutting  
garden” – *Moira White***

**Tuesday 14th May 2024**

**Plant Sale/Raffle**

**7.00 for 7.15 pm Enford Village Hall**

**Entrance £5 - Everyone Welcome!**

Contact Steve Stringer [steve.stringer@outlook.fr](mailto:steve.stringer@outlook.fr)

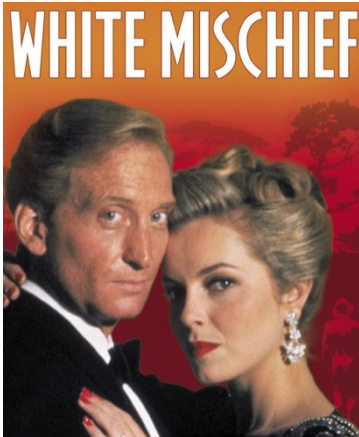
Mobile 07899 758 222

# Enford Film Club

## Tuesday 21 May

# White Mischief

'White Mischief' is the elegant 1987 film which dramatizes the still unsolved Happy Valley murder case in Kenya. Starring Charles Dance, Greta Scacchi and Joss Ackland. Directed by Michael Radford and based on James Fox's book about British aristocrats living in Kenya's Happy Valley during World War II. The film is the true story of an affair which rocked society.



Doors open at 6.30 for 7.15 pm start.  
Tickets £8 to include a glass of wine and canapes  
Come along and enjoy socialising at the bar beforehand.

For further information please contact Theresa Horsey:

[etphorsey@gmail.com](mailto:etphorsey@gmail.com) Mobile 07775 673110



**CHISENBURY PRIORY OPEN GARDEN**

**By kind invitation of John & Tessa Manser**

**SUNDAY 16<sup>TH</sup> JUNE 2024 - 2pm – 5.30pm**

Plants to buy and wonderful teas provided.

**A fun day out**

**TEAS IN AID OF ENFORD CHURCH**

We'll soon be emailing previous bakers and helpers but we may well be in need of more of both!

Would you be prepared to bake a cake and/or help on the day?

We need approx. 35 cakes (a few gluten-free options too!)

plus 20 helpers to make it all run smoothly.

If you are new to the parish

or would like to get involved for the first time,

please contact either Fanny Middleton or Jeni Scott-Dalgleish.

**We really do need your help!**

Fanny Middleton

671645

07974 810731

[fannysurtees@btinternet.com](mailto:fannysurtees@btinternet.com)

Jeni Scott-Dalgleish

670210

07779 986920

[jscottdalgleish@aol.com](mailto:jscottdalgleish@aol.com)

# The Enford Summer Fete needs you!

We're counting down to the Fete returning on Saturday 22 June, and we need your help to make it a success!

Can you give just an hour of your time? We need your support in a variety of roles before, during and after the event - many thanks to all those who have already put their name forward!

**Join the drop-in session at Enford Church on Wednesday 22 May between 5-8pm to discover more about the event, and how you can get involved.** You can also:

- Host a stall - we have a few stands still available for local businesses, charities and community organisations.
- Recommend a local band, entertainer or performer - there is room on the schedule for a few more acts.
- Get producing - if you're making jams, chutneys or other preserves, please consider making extra for our home produce stand.
- Provide a plant - if you are splitting perennials this season, can you consider potting-up a few for the Fete's famous plant sale.
- Donate a bottle - the popular bottle raffle that can be found at the church fayre will also be at the Fete! Please bring your bottles to the drop-in session on 22 May, or email us and we'll collect them!

Interested in getting involved, but can't make the drop-in session? Please email [EnfordFund@gmail.com](mailto:EnfordFund@gmail.com) or speak to Chris Rose, Katie Briscoe, Richard Petitt or Rob Hibberd.



You can now follow the event on the Enford, Chisenbury and Coombe Facebook page (scan this code to go straight there), and finally please help to promote the Fete by displaying the poster in your window, workplace or a local business - we've enclosed a copy with this edition of the newsletter.

# 12th Avon & Bourne Valley Art Exhibition

Saturday / Sunday May 11th / 12th 2024

11.00 am - 5.00 pm

## FIGHELDEAN VILLAGE HALL

(Just off A345 between Durrington & Netheravon).

Now firmly established as an important venue for all up and coming Artists looking for a well organised and professional alternative to show their works- with over 160 Exhibits on view in 2023, 31 original sales plus many prints and over 300 visitors.



Best in Show 2023 winner, Gary Peerless voted by the general public

- Open to the public with **Free Admission** -  
Light refreshments available.

Run on a totally non-profit basis, this year we are again supporting 'Salisbury District Hospital Charity Star's Appeal'



For full details of how to enter, please e-mail trevorwoodbridge\_5@outlook.com (01980 / 670133) or richardhorner008@icloud.com (01980 / 670626)



Farewell and best wishes to Tom & Tamara, of New Buildings, who are moving to Amesbury: And a warm welcome to Jade & Ciaran, who are moving into New Buildings.



## ENFORD FILM CLUB NEWS

**News Flash:** Broadband has now been installed at the Village Hall ready for our plans to screen Live Performances from the Royal Opera House and the National Theatre, as well as making it easier for us to access a wider range of films through Netflix, Amazon Prime etc. We are planning to update film club equipment with a new projector, CD player, upgraded speakers and a wall mounted electric screen. Once we have finalised quotations we will apply for grants towards the cost.

NB: To help with planning future film nights, please let the organisers know (via email or at film club nights) if you have suggestions for what you would like to see – latest films, retro films, opera, ballet performances (that could be live or recorded) by Royal Opera House, National Theatre or Glyndebourne.

Paper and pens will be provided on for everyone to make suggestions!

**Dates for your Diary:** Tuesday 21 May: & Tuesday 18 June

# Gardeners: Plant Sale.

## Saturday 5th May



**Netheravon Phoenix Hall 2pm — 4pm**

**Free parking & Entry**

**Good quality plants: Perennials, annuals,  
vegetables and more**

**A chance to stock up your garden @ reasonable prices**



The Arts Society - Pewsey Vale will hold their May lecture on Tuesday 7th May at 2.30pm in the Bouverie Hall. The lecture is entitled:

## **"A Window into Russia: A History of the Hermitage Museum,"** by Dr Rosamund Bartlett.

*The lecture charts the history of one of the world's largest museums, from its foundation in 1751, through to the 21st century, the museum's eventful history provides a revealing window into the peculiarities of Imperial and Soviet Russia.*

Rosamund Bartlett is a writer, scholar, lecturer, cultural historian and translator specialising in Russian Literature. She has written biographies of both Tolstoy and Chekhov, translated Anna Karenina and is a Trustee of The Anton Chekov Foundation. She lectures regularly on Russian art.

**Refreshments are available from 2.00pm** and non-members



## **Fibre to the Home Broadband coming to Enford.**

Wiltshire County Council has signed a contract with Wessex Internet to provide Fibre to the Home as part of the Gigabit Britain project. Coverage for broadband is currently variable for Enford and surrounding hamlets, with no widespread FttH availability from BT/Openreach despite several rounds of government funding. Wessex internet have been contracted for the last "hard to reach" places such as Enford to provide full FttH broadband and have confirmed that Enford is within the coverage area. I have been advised that the more potential customers that sign-up, the earlier our village will be built (project has 5 year span and 14,5000 homes to connect) If you would welcome a faster, more reliable broadband service, sign-up ASAP on the Wessex Internet website here: <https://www.wessexinternet.com/>. Wessex offer packages up to and including 900 Mbps, sufficient for the vast majority of residents whether gamers, home-workers or Silver Surfers!

**The Friends of Amesbury Abbey Church  
Welcome the Builth Wells Male Voice Choir  
in concert with the Salisbury Plain Military  
Wives Choir**



**Friday, May 17<sup>th</sup> May at 7.30 p.m.**

**At the parish church of St Mary and St Melor,  
Church Street, Amesbury.**

**Refreshments available during the interval.**

**Ticket £15 from Jan Swindlehurst 01980 625467**

Or online at Ticket Tailor: [https://buytickets.at/  
thefriendsofamesburyabbeychurch/1166369](https://buytickets.at/thefriendsofamesburyabbeychurch/1166369)

## **ENFORD PARISH COUNCIL:**

Will be holding their **AGM on Tuesday 7<sup>th</sup> May at 6.30pm**

in the Village Hall. This will be followed immediately by a 'normal' Parish Council meeting at 7.30pm to which residents are always welcome to attend.

## **THE PARISH HALL MANAGEMENT COMMITTEE**

The PHMC will be holding their AGM on Tuesday, 4<sup>th</sup> June at 6.00pm in the Church. This is an open meeting and all residents are welcome to attend with the main item of discussion being the closure of the existing charity scheme and the transfer of all assets to Enford Parish Council who are the existing Guardian Trustees.

## **Minutes of the Annual Parish Council Meeting**

The draft minutes of the **Annual Parish Meeting**, held on 2<sup>nd</sup> April 2024, are too large to be printed here or displayed on the notice boards around the parish. They are however available to read in full on the Parish Council website ([www.enfordparishcouncil.gov.uk](http://www.enfordparishcouncil.gov.uk)) and also on the Newsletter website ([www.enfordnewsletter.org](http://www.enfordnewsletter.org)).

Alternatively, you can contact the Clerk at [clerk@enfordparishcouncil.gov.uk](mailto:clerk@enfordparishcouncil.gov.uk) or send a message direct from the website and they can be forwarded to you directly.

## *Recipe of the month*

*~ Please send in your recipes... We would love to feature readers' recipes!*

### *STEM GINGER ICE CREAM*

#### **Ingredients**

3 1/2 oz stem ginger (from a jar in syrup) - whizzed to a pulp  
1 can condensed milk  
1 large carton double cream  
50-100 ml Green Ginger Wine or Grand Marnier (Optional)

#### **Method**

Whizz the stem ginger pieces, add the condensed milk and mix. Whisk the double cream till it's reasonably whipped (not too solid) and then mix that into the ginger mixture. Add the Ginger Wine or Grand Marnier now and whisk again. Pour into a loaf tin or bowl which can go into the freezer and freeze it overnight. The alcohol will keep it from setting really hard... which makes life easier when serving.





## D-Day was the start of Operation 'Overlord'

On 6th June 1944, Allied forces launched a combined naval, air and land assault on Nazi-occupied France. The 'D' in D-Day stands for 'day' and was used to describe the first day of any large military operation especially when the date was secret.

Ground troops landed across Utah, Omaha, Gold, Juno and Sword beaches. By evening the Allies had a foothold to begin their advance into France.

D-Day required huge cooperation between international armed forces. By 1944, over **2 million troops** from **12 countries** were in Britain preparing for the invasion. Allied forces were mainly American, British and Canadian troops but also included Australian, Belgian, Czech, Dutch, French, Greek, New Zealand, Norwegian, Rhodesian and Polish. **The largest naval, air and land operation in history**

The invasion was in two phases: airborne assault and amphibious landings. Just after midnight on 6 June, over **18,000 paratroopers** were dropped to provide support for infantry divisions on the beaches. Allied air forces flew over **14,000 sorties** in support of the landings.

Nearly **7,000 naval vessels**; battleships, destroyers, minesweepers, and assault craft took part in Operation 'Neptune', the naval part of 'Overlord'; responsible for escorting and landing over **132,000** troops on the beaches.



## 80th Anniversary of D-Day Landings

Next month, 6th June will mark 80 years since the D-Day landings took place. This will be marked by celebrations around the country and Enford is no exception.

Alongside the Beacon lighting in the evening the Enford Community Fund will be organising food and drinks.

Who has noticed that the Church Clock is now keeping accurate time again? So often it is small things which are happening 'behind the scenes' that can make such a difference to life in a community, especially a small one like ours.

Are there people in our community, good neighbours whom you think should receive public acknowledgement in the newsletter for the things they do which benefit us all?

If so, please send your nominations/suggestions to:

[Enfordnewsletter@gmail.com](mailto:Enfordnewsletter@gmail.com)



North Wiltshire

## Can you Help Families in your area?

Home-Start helps families with children under five who are experiencing tough times. Volunteers visit families weekly to help them cope with challenges such as: isolation, low mood, financial worries, or twins. Support is tailored to need. It could be accompanying a parent to a playgroup or playing with a child whose parent is too ill. Often, just listening makes all the difference.

We're looking for volunteers with:

- ✓ A friendly, positive nature
- ✓ Great listening skills and empathy
- ✓ Parenting skills/relevant life experience
- ✓ Time to visit families weekly for 2-3 hours



We offer professional training, mentoring & personal development. Expenses paid.

Group Volunteers, Trustees and Volunteer Fundraiser roles also available.

**Next Volunteer training starting soon.** T:01672 569457

E: [hello@homestartnorthwiltshire.org.uk](mailto:hello@homestartnorthwiltshire.org.uk) W: [www.homestartnorthwiltshire.org.uk](http://www.homestartnorthwiltshire.org.uk)



Home Start North Wiltshire is committed to equality, diversity, and safe recruitment.  
This volunteering post is subject to an enhanced DBS check. Charity number: 1106736



## **Mum treated for cancer takes on the London Marathon in aid of Stars Appeal**

A Salisbury mum treated for cancer is taking on the London Marathon to support the Stars Appeal, Salisbury Hospital's Charity. **Jo Cullen**, diagnosed in 2022, ran the marathon on

April 21st, to "give back" for the care she received.

This will be the first marathon for the 50 year old. She had been due to run in 2022 but was forced to pull out due to her diagnosis.

"Getting my diagnosis was a shock but I was lucky to catch it early," explains Jo, "I am finally able to run the London Marathon having had to defer my entry twice due to surgery. I want to finish and raise as much as I can for the Breast Unit."

The Stars Appeal Breast Cancer Unit, provides diagnostic equipment, treatment and counselling rooms enabling patients to have diagnosis and care in one place, reducing the need to visit other departments.

"We're lucky to have such a wonderful Breast Unit on the doorstep.

The nurses and consultants were amazing. I'm so grateful for all the work the Stars Appeal do. I felt strongly about raising money for them to give back to a charity that has helped me and hundreds of other people," said Jo.

**Sophie Bagshaw**, from Ludgershall, an Adult Nursing student at Bournemouth University doing a placement at Salisbury Hospital, is also taking on her first London Marathon for the Stars Appeal. The 20 year old said: "While doing my placement it was a surprise to me how much was funded by the Stars Appeal and I wanted to contribute. Salisbury is my local hospital so I wanted to give back.

To sponsor Jo visit:

<https://www.justgiving.com/page/jo-cullen-1710703883122>

To support Sophie go to: <https://gofund.me/ecb711e2>

**Advertise in this magazine!**

Email Jeni Scott-Dalgleish at  
[enfordnewsletter@gmail.com](mailto:enfordnewsletter@gmail.com)

for details and prices.

## **THE ENFORD COMMUNITY FUND**

Funding is available to help projects/events in the Parish of Enford (which includes East and West Chisenbury, Coombe, Fifield and Littlecott).

Applications for awards must be made to [EnfordFund@gmail.com](mailto:EnfordFund@gmail.com) by email or letter, no later than the first day of the award month (March and September).

The following guidelines will be followed in allocating funds:

1. Awards will be considered every 6 months in March and September.
2. Awards will be made for individual projects and are not designed to allow awardees to become reliant on the award on an annual/regular basis.
3. Awards will be made to causes that benefit the community and not specific individuals.
4. No awards will exceed £1,000.
5. For any award to be made, there must be agreement by at least 75% of the Committee.

## **ENFORD PARISH COUNCIL MEETINGS 2024**

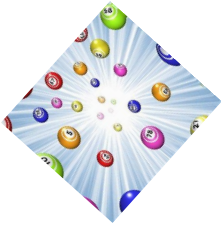
[www.enfordparishcouncil.gov.uk](http://www.enfordparishcouncil.gov.uk)

<b>Day</b>	<b>Date</b>	<b>Time</b>	<b>Meeting</b>
Tuesday	May 7th	6:30pm 7:30pm	Parish Council AGM Parish Council meeting
Tuesday	July 2nd	7:30pm	Parish Council meeting
Tuesday	September 3rd	7:30pm	Parish Council meeting
Tuesday	November 5th	7:30pm	Parish Council meeting
Tuesday	November 26th	7:30pm	Precept Meeting 25/26
Tuesday	December 3rd	7:30pm	Parish Council Meeting

**ALL MEETINGS ARE HELD AT ENFORD VILLAGE HALL**

# Friends of Netheravon school PTFA

## Monthly prize Bingos



**Netheravon Phoenix  
Hall: Doors open 2pm**

- Sun 26th May
- Sun. 23rd June
- Sun 28th July
- Sun 25th August



# Local Support & Information

## PEWSEY VALE COMMUNITY CRAFT & TEA ROOM

**OPEN:WED - SAT 10.00 - 4.00**

**OLD FORD COURT, HIGH ST, PEWSEY SN9 5AQ**



- Profits donated to local charities;**
- Interested in helping? - pop in for a volunteer form.**

## Mobile Library Services

**Love Reading,  
Love Libraries**

Dates and times of all mobile library stops are available online via the website [Libraries - Wiltshire Council](#) and from printed timetables

available from the mobile library. We look forward to seeing all of our customers when we next visit you.

**Next due in Enford on Friday 3rd May at 3:25pm** for 20 minutes then on these dates at the same time.

- Friday 31st May
- Friday 28th June
- Friday 26th July
- Friday 23rd August
- Friday 20th September

If you've never used the mobile library before it's free to join and you can use your membership card in any Wiltshire Library or online to access free eBooks and magazines.

## Netheravon Library

Open Monday and Thursday 1pm - 5pm.



Age UK Wiltshire Information & Advice Team

0808 196 2424

[enquiries@ageukwiltshire.org.uk](mailto:enquiries@ageukwiltshire.org.uk)  
<https://www.ageuk.org.uk/wiltshire/>

**CrimeStoppers.**  
**0800 555 111**  
100% anonymous. Always.

<https://crimestoppers-uk.org/>  
Crimestoppers is not the police.  
If you require urgent police attention, please  
**dial 999**

## PARISH DEFIBRILLATOR LOCATIONS

1. Hill House Annex, 9 Longstreet, SN9 6DD Grid ref SU142515  
What3Words - /// Parrot/slid/stadier
2. 2. Red Lion, East Chisenbury SN9 6QA  
What3Words - /// Foal/Thus/Ghost

If you think you need to use a defibrillator, call 999. The Emergency Service will give you the code to get into the cabinet.

See [www.enfordnewsletter.org](http://www.enfordnewsletter.org) for more information and a short video on how to use it.



## FLY TIPPING

If you spot someone fly-tipping in Wiltshire, report the offender to us through our online reporting system - <https://www.wiltshire.gov.uk/fly-tipping>.

As a reward for reporting a fly-tipper you could get a **gift voucher of up to £200** following the payment of a Fixed Penalty Notice or a successful prosecution.



## Swindon Domestic Abuse Support Service

**24 hours 7 days a week 365 days a year**

If you are worried about your situation, you can call them in confidence and speak to a real person, not a machine - 01793 610610.

<https://swadomesticabuse.org/>



is independent from the police and you don't have to report a crime to the police to get our help. You can contact us at any time, regardless of how long ago the crime happened.

Call us free on **0808 281 0113** or **08 08 16 89 111**

Email us via the link on the website [victimsupport.org.uk/resources/Wiltshire/](https://victimsupport.org.uk/resources/Wiltshire/) where you will find all the ways you can contact us.

## What is livestock worrying?

Wiltshire is undoubtedly a beautiful rural county and agriculture dominates 73% of the landscape. It is only natural that people delight in exploring the open spaces but there is a need to respect the countryside too and especially so when out walking with a dog.

Livestock worrying is when a dog attacks or chases livestock in rural or agricultural areas. No matter how well behaved you think your dog is, it's every dog's instinct to chase, even if they are usually obedient and good with other animals.

When a dog chases livestock it can result in significant injury or suffering and in the worst cases, death of the animals involved.

### Spreading disease

There is growing evidence of the links between two specific diseases in livestock and the presence on grazing land of faeces from infected dogs. The two diseases are:

- Neosporosis – which can cause abortions in cattle
- Sarcocystosis – which can cause neurological disease and death in sheep



*The result of a dog attack near Marlborough*

### Wiltshire Rural Crime Team is asking people to remember the following when enjoying the lovely Wiltshire countryside:

- Keep dogs on a short lead when around livestock
- Clear up after your dog as faeces can harm cattle and sheep – and humans too!
- Tampering with farm signs and electric fences could have serious consequences, they are intended to everybody keep safe
- Please do not remove signs that are there to keep people safe and always leave gates how you found them - or follow instructions on signs on gates
- Your actions can affect the livelihoods of other people

## Reporting livestock worrying



In an emergency always call 999.

Use the QR code to the left to report rural crimes you may have witnessed after the event.

Or call 101.



WILTSHIRE POLICE

Proud to serve and protect our communities

# Important Notice to All Dog Walkers

When up on the plain, please be aware that there are areas which have been specially put aside for Curlews which nest on the ground. PLEASE, DO NOT walk through, or close to the Curlew Scrapes. There are signs up to warn walkers.

We are now in the nesting season and birds and eggs are very vulnerable. They are on the Red list of threatened species, so please do your bit to help to protect them.

**AVOID THESE MARKED AREAS**



# Advertising

**DRAINSWORLD UK**

24/7 CALL OUTS      CCTV SURVEYS

DRAIN RELINING & PATCHING  
DRAIN INSTALLATION & REPAIRS  
HIGH WATER PRESSURE CLEANING

Wayne Austen  
drainsworld.uk@gmail.com

**TELEPHONE: 07982 840528**

*For all your drainage needs!*

**Toe 2 Sole at Home**

For all your foot healthcare in the comfort of your home. For appointment please call

Sousxie Slater  
MCFHP MAFHP

Tel: 07540433185

*You can*

**ADVERTISE HERE**

Contact Jeni Scott-Dalgleish

[enfordnewsletter@gmail.com](mailto:enfordnewsletter@gmail.com)

**Mend it Matt**  
*Handyman*

Do you need help with anything...

Leaky taps, Broken gates,  
Gardening, Bicycle servicing, Painting,

Any of those things that you either need help with or just haven't got round to.

Give me a call and ask. No job too big or small

Matt Jump

07968 580 804





# NURTURE THE SOUL

Sneak to the Red Lion for a post walkie pint (bring the hounds for a complimentary Bonio), we're open from 11am.

Better still, gather some chums and indulge in a long-overdue lazy Saturday afternoon (Scrabble available).

The bar is open into the evenings for sundowners or pre-dinner drinks (black-tie not required). We hope to see you later.



RED LION | EAST CHISENBURY

## MELISSA THURGOOD, YOUR LOCAL MORTGAGE, EQUITY RELEASE & PROTECTION ADVISER



As a Mortgage, Equity Release and Protection Adviser, I can provide advice to my clients on a whole range of products and services from across a large number of financial service providers.

I take great pride in helping my clients on their journey to realise their property goals.

✓ WHOLE OF MARKET ✓ INDEPENDENT

**I have been helping and providing advice to my clients in Wiltshire and across the UK for many years.**

- ✓ Purchase ✓ Remortgage ✓ Life Insurance & Income Protection
- ✓ Mortgages for Armed Forces Personnel and their families
- ✓ Over 50s lending, retirement mortgages and Equity Release

**I also specialise in mortgages for:**

- ✓ Portfolio Landlords & Ltd Company Buy to Lets
- ✓ Self employed or Contractors
- ✓ Adverse Credit & Complex Income Streams

***Been declined by a high street bank, I could still help!***

For a no obligation chat call Melissa on **07582 585341**. Alternatively you can visit: **[www.m-ex.co.uk/melissa-thurgood](http://www.m-ex.co.uk/melissa-thurgood)** or find me on Facebook: **[www.facebook.com/MelissaMortgageAdviser](https://www.facebook.com/MelissaMortgageAdviser)**

**Mortgage Experience**

A personal approach to specialist mortgages

**YOUR HOME MAY BE REPOSSESSED IF YOU DO NOT KEEP UP REPAYMENTS ON YOUR MORTGAGE OR ANY OTHER DEBT SECURED ON IT.**



# Manor Farm INTERIORS

- Curtains/upholstery fabric
- Cushions
- Lampshades
- Wovenology baskets
- Workshops

Opening by appointment only , just call:  
07881221737 or 07875749857

Manor Farm, Winterbourne Stoke SP3 4TB  
enquiries@manorfarminteriors.co.uk  
www.manorfarminteriors.co.uk



## Upavon Village Store

*"Everything You Need Locally"*

- Fresh fruit & veg, quality meat & fish
- Local produce, fresh bread & coffee
- Wines & spirits, cold beer & cider
- Newspapers & magazines, tobacco & vapes
- Lottery & scratch cards, e-top ups
- Full "top-up" shop available
- Post Office (Mon - Sat: 9am - 1pm)
- We look forward to seeing you!

Mon - Sat: 7am - 7pm

Sat: 8am - 7pm

Sun: 8am - 6pm

11 High Street

SN9 6EA

01980 630268

# GRAY & AMOR LTD.

CARPENTRY & PROPERTY RENOVATION

Covering all aspects of property renovation and maintenance.

View our range of services online or call to discuss your project.

**01380 587006 / 01672 596006**

**info@grayandamor.co.uk www.grayandamor.co.uk**



## Highland

Plumbing & Heating Ltd

All aspects of plumbing & Hot water systems.

Oil fired boiler servicing, installation & repair.

Heating Controls.

Air Source & Ground source heat pump Installation, servicing & repair.

Solar Thermal.

Underfloor heating.

Thermal imaging.

High end bathroom design and installation.

A family run, local company with over 15 years experience.

[Paul.highlandplumbing@gmail.com](mailto:Paul.highlandplumbing@gmail.com)

Paul Lane 07825 612 632

14 Coombe Lane, Enford, SN9 6DF Company Reg No. 11042505 VAT no. 317 1418 26

# MOBILE HAIRDRESSER

Ring Donna

on

07711 579403

# MOTOR GARAGE LTD

Servicing, MoT tests and Repairs for  
Classic Cars as well as Modern

Telephone: 01980 670348

[www.themotorgarage.co.uk](http://www.themotorgarage.co.uk)

[enquiries@themotorgarage.co.uk](mailto:enquiries@themotorgarage.co.uk)

Netheravon, Salisbury, Wiltshire, SP4 9RH

# AKER

FIRE & SECURITY

INTRUDER ALARMS, FIRE ALARMS, FIRE EXTINGUISHERS, CCTV & GATE AUTOMATION

For all your Fire and Security needs call  
07515358875

email [info@akerfireandsecurity.co.uk](mailto:info@akerfireandsecurity.co.uk)



## EQUIDAE EQUINE SERVICES

18 The Bluestone Centre, Sunrise Way, Solstice Park, Amesbury, Wiltshire, SP4 7YR

T: 01980 258472 E: [equidae-equine-services@outlook.com](mailto:equidae-equine-services@outlook.com)

Opening Times

Monday to Friday 9.00am – 6.00pm

Saturday 9.00am – 5.30pm

Sunday 10.00am – 2.00pm

Rug Wash and Reproofing Service

Equine Feed-Supplements-Bedding-Hay-Field & Stable Accessories-First Aid

## PROFESSIONAL SEWING SERVICES

HANDMADE CURTAINS & ROMAN BLINDS  
CLOTHES ALTERATIONS & REPAIRS

*"No job too little – or too large!"*

Something ELS



ELS BREWIN  
Woodborough  
01672 851615  
07833 127 328

## Mobile Dog Groomer

K-9 **PAMPER** Unit

Professional, friendly dog grooming  
service based in Pewsey.

Krissy Anthistle

Tel: 07469 202411

Email: [info@k9pamperunit.co.uk](mailto:info@k9pamperunit.co.uk)

[www.k9pamperunit.co.uk](http://www.k9pamperunit.co.uk)



- › Camera Survey
- › Birds Nests Removed
- › Fully Insured
- › NCCSSA Registered
- › NVQ Qualified
- › Friendly Local Service
- › Cows Fitted

## SB Paint and Decorate

Over 30 years' experience

Interior & exterior painting  
Wallpapering  
Tiling



Contact Shaun on

[sbpaintanddecorate@gmail.com](mailto:sbpaintanddecorate@gmail.com)

07774 479944

Call Sean on 07881 206536

[seanoades@hotmail.com](mailto:seanoades@hotmail.com) [www.so-chimney-sweeping.co.uk](http://www.so-chimney-sweeping.co.uk)

# Avon Security

MASTER LOCKSMITHS

## Engraving Service Now Available

- > Brass
- > Plastics
- > Aluminium
- > Glass
- > Trophies
- > Gifts

## Free Advice & Quotations On Securing Your Property & Belongings

- Key Cutting
- Locks Supplied & Fitted
- Access Control
- Safes
- PVCu Locks
- Master Key Systems
- Lock Repairs
- Door Furniture & Ironmongery
- Transponder Car Keys
- Keys To Code
- Watch Batteries & Straps
- Emergency Call Out Service



# 01980 626000

21, Salisbury Street, Amesbury, Wiltshire, SP4 7AW  
[www.avonsecurity.net](http://www.avonsecurity.net)



# DW

## LANDSCAPING

### Garden Transformations

### Hard Landscaping Specialist

Qualified and accomplished in all aspects of garden landscaping with 16 years experience.  
Call or email Dan Withers to discuss your needs.

07833 248269 [dwithers.landscaping@gmail.com](mailto:dwithers.landscaping@gmail.com)

## Centrally Heated Shepherd's Hut B&B in Haxton

5\* Airbnb Reviews. Tranquil & private spot in cottage garden among trees, overlooking a meadow with its own secluded outside space and parking. Fully insulated, underfloor heating, flushing loo, shower, mini kitchen, double bed, WiFi & TV/DVD. Sleeps two. Suitable for year round occupancy.

Contact Helen on  
**07974 966440**  
[h.gouldcooper@gmail.com](mailto:h.gouldcooper@gmail.com)





## Plank's FARM SHOP

### Your Local Farm Shop

Come and visit for delicious local produce plus ready meals, quiches, cakes and much more cooked onsite by our team of talented chefs. Ample free parking available. We look forward to welcoming you soon!

The Old Potato Yard, Lydeaway, nr Devizes SN10 3PU  
Email [info@planksfarmshop.co.uk](mailto:info@planksfarmshop.co.uk) Telephone **01380 848691**  
[www.planksfarmshop.co.uk](http://www.planksfarmshop.co.uk)

**Open Monday, Tuesday, Wednesday, Thursday & Saturday 8.30 – 5.00,  
Friday 8.30 – 5.30, Sunday 10.00 – 4.00**



## Experience Wood Turning



Gift Certificates are available for both half and one day wood turning taster sessions. Coombe based professional turner George Shapland offers a bespoke package of one to one training for anyone wishing to have a go.

In addition to offering tuition, George also has a range of hand turned items for sale, mostly from local timber and also takes commissions.



Contact: George Shapland  
01980 671321  
[george@butterwood.co.uk](mailto:george@butterwood.co.uk)  
[www.butterwood.co.uk](http://www.butterwood.co.uk)



# PEST CONTROL SERVICE

[www.molegone.co.uk](http://www.molegone.co.uk)

Moles, Rabbits, Squirrels, Rodents & Wasps/Hornets

Covering South Wiltshire and the Dorset/Somerset/Hampshire borders

CRB Checked, Fully Insured  
Yearly/Monthly Contracts Available  
No Catch No Fee on Moles and Squirrels, trading since 2010

Contact Roy on 01722 716972 or 07798 570443

Private Residences, Local Councils, Places of Worship, Equestrian & Commercial Sites, Golf Clubs & Farms are amongst my clients

# JAGUAR EXECUTIVE TAXI

## PRIVATE TAXI SERVICE

All distances covered at reasonable rates

Mob: 07909386775

Booking Mob: 07825233216

Email:

[janeruddhughes@sky.com](mailto:janeruddhughes@sky.com)



Bespoke Fashion Design and Dressmaking for any occasion.

For more details contact Ramona Edwards  
rhensel85@gmx.de // 07827597084

Oil Boiler Servicing  
Commissioning & Repairs

Call

Graham C Brown & Son

01980  622737

Fully Qualified

Fully Insured

Experienced Technician



Plumbing, Heating, Electrical & Renewable Energy

Solar Thermal & PV, Air & Ground Source Heat Pumps, Ventilation, Boiler Replacements. Domestic, Commercial & Industrial Contractors. Family Business Established 1970.

Free Estimates and Advice:  
Tel: 01980 670667 Fax: 01980 670811  
[www.rgvengineering.co.uk](http://www.rgvengineering.co.uk) info@rgvengineering.co.uk



MODERN & TRADITIONALLY DESIGNED MEMORIALS

**M J SLY**

Monumental Stonemason  
New Memorials, Additional Inscriptions  
Restorations, Free Home Visits  
Free Brochure

Marlborough (01672) 516797

Email: [mailto:martin@mjsly.co.uk](mailto:mailto:martin@mjsly.co.uk)

Website: [www.mjsly.co.uk](http://www.mjsly.co.uk)

Workshop & Showroom at Pelham Court,  
London Road,  
Marlborough, Wiltshire



# Digger & Mojo

DECORATIVE ANTIQUES EMPORIUM  
AND REPAIR WORKSHOPS



***We sell + restore Antiques + revamp your furniture***

***Mending · Painting · Reupholstery***

**SHOP OPEN FRIDAYS TO SUNDAYS 11AM-5PM**

**WORKSHOPS OPEN 7 DAYS BY APPOINTMENT**

**CALL AHEAD ON 01672 851 510**

**WOODBOROUGH GARDEN CENTRE, PEWSEY, SN9 5PF**

**[www.diggerandmojo.com](http://www.diggerandmojo.com)**

# Jonathan Green Antiques

## **We Buy & Sell**

Silver Jewellery

Gold Coins

Anything interesting

Home Visits no obligation

## **Repair & Restoration**

Silver Jewellery

Hand Engraving

Machine Engraving

Remodelling of Jewellery

**You can find us at the rear of the ground floor.**

The Antiques Market

37 Catherine Street

Salisbury

SP1 2DH

**01722 332635**

Email: [jg@jonathangreenantiques.co.uk](mailto:jg@jonathangreenantiques.co.uk)



## **STITCHCOMBE FOODS**

LOCALLY SOURCED MEAT AND OTHER FARM PRODUCE



Grove Farm Butchery

Thicketts Road

Mildenhall

Marlborough

Wiltshire

SN8 2FJ

t: 07928 454564



Scan here to click  
& collect

Our homebred Hereford cattle graze in the Kennet Valley & Savernake Forest, producing exceptional beef that is butchered on farm and sold direct from the Grove Farm Butchery.

We are a full-service butcher supplying local pork, lamb & venison, and English chicken. Our meat boxes represent great value, prices starting at £30.

[www.stitchcombefoods.co.uk](http://www.stitchcombefoods.co.uk)

e: [sales@stitchcombefoods.co.uk](mailto:sales@stitchcombefoods.co.uk)

## VILLAGE COMMITTEES

PARISH COUNCIL [www.enfordparishcouncil.gov.uk](http://www.enfordparishcouncil.gov.uk)

<b>Chairman</b>	Richard Roberts	671055
Vice Chairman,	Mark Hiskett (PROW)	670955
PCC Representative & Public Rights of Way		
Roads and Highways	Martin Farrow	
Planning	Peter Cliffe-Roberts	671676
Parish Clerk	Elizabeth Harrison	670034
Playpark, Village Amenities and Youth Representative	Jane Young	670532
Neighbourhood Watch and Police Liaison	Charlotte Clark	670276
Tidworth Area Board and Village Hall Representative	Anthony D'Arcy Irvine	670501
Flood Warden	Bruce Waight	670113
No specific role	Pat Holdway	671792

### ENFORD COMMUNITY FUND

Katie Briscoe  
Rob Hibberd  
Richard Pettitt  
Chris Rose

### PAROCHIAL CHURCH COUNCIL

<b>Church Wardens</b>	Sue de Candole
<b>Treasurer</b>	Richard Leakey
<b>Secretary</b>	Fi Leakey
<b>Council Members:</b>	Mary Burdick Fanny Middleton

### NEWSLETTER

<b>Chair:</b>	Sue Cosgrove
<b>Vice Chair &amp;</b>	Jane Young
<b>PC Rep:</b>	
<b>Secretary &amp;</b>	Jeni Scott-
<b>Advertising:</b>	Dalgleish
<b>Treasurer:</b>	Gareth Rowe
<b>Village Hall Rep:</b>	Jacqui Elkins
<b>Parish Hall Rep</b>	Theresa Horsey
<b>Collator:</b>	Claire Mingham
<b>Social Media</b>	Iris Daunt-
<b>Officer:</b>	Withers
<b>Committee:</b>	Roz Perry Shona Stewart
<b>Co-optee:</b>	Kim Riche

### VILLAGE HALL

<b>Chairman and</b>	Judy D'Arcy-Irvine
<b>Booking Officer</b>	<b>01980 670501</b>
<b>Vice Chairman</b>	<b>Vacant</b>
<b>PC Rep</b>	A D'Arcy-Irvine
<b>Secretary &amp; Grounds</b>	Hamish Scott-
<b>Officer</b>	Dalgleish
<b>Camera Club</b>	Jane Young
<b>Newsletter</b>	Jacqui Elkins
<b>Property Officer</b>	David Spencer
<b>Gardening Club</b>	Rosemary Cox
<b>Short Mat Bowls</b>	David Spencer
<b>Junior Football Club</b>	Ollie Stagg

## USEFUL NUMBERS

### EMERGENCY SERVICES

#### DOCTORS

DURRINGTON	Avon Valley Practice Surgery	01980 652378
LARKHILL	Larkhill Medical Centre	01980 845266
UPAVON	Avon Valley Practice Surgery, Fairfield	01980 630221

#### HOSPITAL

SALISBURY DISTRICT HOSPITAL	01722 336262
-----------------------------	--------------

#### OTHERS

ELECTRICITY	105
ENVIRONMENTAL AGENCY	0800 80 70 60
FLOOD LINE	0345 988 1188
	or 0345 602 6340
GAS	0800 111 999

#### POLICE



#### DURRINGTON LINK

LINK (Durrington & District) 01980 594857

#### SCHOOLS

DURRINGTON, Avon Valley Academy	01980 652467
NETHERAVON, All Saints' C of E Primary	01980 670339
RUSHALL, Rushall C of E Primary	01980 630360
PEWSEY, Pewsey Vale Secondary School	01672 565000

### ENFORD PARISH COUNCIL WEBSITE

[www.enfordparishcouncil.gov.uk](http://www.enfordparishcouncil.gov.uk)

### HQ SALISBURY PLAIN TRAINING AREA

**999** MOD Police Control Room - **Crime in progress**

**01371 854444** - MOD Police Control Room - *Non-emergency crime on SPTA only*

**01980 674951** to call 24hour Range operations - *To report suspicious activities or dangerous issues ONLY.*

**01980 620819** Complaints Line - ***The only way to make a complaint.***

**0800 022 3334** - Landmarc National Service Centre - *To report damage to or fly-tipping on the training area ONLY.*

For Salisbury Plain Training Area News, giving times of live firing, current and upcoming exercises go to

<https://www.gov.uk/government/publications/salisbury-plain-training-area-spta-newsletter>

#### **Health & Safety reminder for all Military Training Areas & Ranges:**

Do not touch or tamper with Military debris. Wash your hands before you eat. Clean your footwear before you enter your car or home.