



# ENFORD NEWSLETTER

[www.enfordnewsletter.org](http://www.enfordnewsletter.org)

May 2013



## FIND OUT WHAT'S HAPPENING IN AND AROUND THE PARISH



### WELCOME

We would like to wish a very warm welcome to all who have recently moved into the Parish of Enford.

We hope that you will find many new friends and neighbours



If you would like to put a message, an article or information into the Newsletter please email it to [tanya@becker.globanet.co.uk](mailto:tanya@becker.globanet.co.uk) or give it to any member of the committee. You will find their names on the inside of the back cover of this Newsletter

**ENFORD NEWSLETTER      CONTENTS**

|  |    |
|--|----|
| Newsletter/Enford & Avon Valley Get Together | 3  |
| Golf   | 4  |
| Film Club                                    | 5  |
| Youth Club/Chisenbury Priory Gardens         | 6  |
| Christian Aid/May Day                        | 7  |
| Knitting for Charity                         | 8  |
| Gardening Club/Cancer Research               | 9  |
| Library/SSAFA                                | 10 |
| Military Wives Choir/Villa For Rent          | 11 |
| Thailand, Vietnam and Cambodia               | 12 |
| Mothers' Union                               | 14 |
| Parish Plan Public Meeting                   | 15 |
| Summer Fete                                  | 16 |
| Wiltshire Police                             | 17 |
| Village Hall                                 | 18 |
| All Saints                                   | 19 |
| SPTA News                                    | 21 |
| Plant & Food Fair                            | 23 |
| Advertising                                  | 24 |
| Village Committees                           | 31 |
| May Diary                                    | 32 |



**The next Newsletter Meeting & Deadline is**

**Monday 20th May**

All items for inclusion, whether they are handwritten, typed or via e-mail, **MUST be submitted by the date of the meeting**. These articles may be handed in to any Newsletter Committee member. Please send e-mails to **[tanya@becker.globalnet.co.uk](mailto:tanya@becker.globalnet.co.uk)**

Enford Newsletter Committee reserves the right to reject or omit from publication any material that is considered by majority of Committee Members to be detrimental to any person or which is not in the best interest of the community as a whole. All letters and articles must be signed, but the Committee will withhold the name of the writer if this is requested at the time of sending it in.

**Advertising**

**in  
The Enford Newsletter**

**£20 per 1/8 page for 10 issues  
£45 per 1/3 page for 10 issues**

**Please contact Gay Monk  
01980 670540**

## **CHANGE TO NEWSLETTER PUBLICATION DATES**

Last Summer the Committee voted to change the month of the double issue of the Newsletter.

This year it will be July/August so that we can publish a Newsletter in September. This is to help all the clubs and activities that may take a break over the summer and start up again in September.

## **WOULD YOU LIKE TO JOIN THE NEWSLETTER COMMITTEE?**

The committee meets once a month to look at the items which have been sent in for publication, to make any amendments and to discuss the everyday running of the Newsletter.

We would love to have 2 or 3 more people, ideally from East and West Chisenbury and Fifield but it really doesn't matter where you live as you would be very welcome.

You can be sure of a cup of tea or coffee with biscuits and a lively chat.

If you are interested let me or one of the other committee members know and then why not just come along and try it!

Committee members are on the inside back page of this Newsletter

Tanya Becker 01980 670345/tanya@becker.globalnet.co.uk

# **Enford and Avon Valley Get-Together**

**A Group for any Age**

**Every Monday**

**Starting Monday 13<sup>th</sup> May**

**10am --- 12pm**

## **Enford Village Hall**

**Meet other people while having a coffee and a slice of cake**

**We will be offering a small shop more details to follow**

**Information point, snack, games, and more.....**

## **ENFORD - CHISENBURY GOLF – 7 JUNE 2013**

The Enford and Chisenbury golf day out will be at the Upavon Golf Course on Friday 7<sup>th</sup> June 2013. Assemble at 12.00pm for a Tee Off at 12.30pm.

### Format

This year's golf day will be a sponsored charity event in aid of Help For Heroes. There has already been a generous response and we will publish the list of sponsors in May's Newsletter. We hope to have up to 30 of us taking part this year including a few of our sponsors. We are looking for 6 to 8 teams each of 4 or 3.

Format for the golf is dependant on numbers taking part and will be published in the May Newsletter.

Please give an early indication to take part. Initial replies please by 26<sup>th</sup> April.

### Costs

The cost of the afternoon will be no more than £25 (for a sandwich, green fees). For Upavon Golf Club Members, this will be less the Green Fee element.

All prizes have been kindly donated by sponsors.

### Handicap

All play will be off full handicap. Maximum handicap for gentlemen will be 26 and 36 for the ladies. Please be honest when completing your entry form.

### Prize Giving

Prize giving will take place at the Upavon Golf Club at the end of play starting hopefully at 5pm.

So come and join us on a fun day out – (No clash with either Wimbledon or the Fete!!)

---

### ENTRY FORM

1. Name:..... Phone:.....
2. Handicap:..... If none Gents 26, Ladies 36 and be honest.

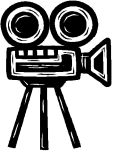
Please reply by **26 April** to either:

|   |    |   |
|---|----|---|
| Adrian Orr<br>Chapel House<br>East Chisenbury<br>Tel: 670447<br><b>a.orr@btinternet.com</b> | or | 'PK' Kenny<br>Wayside Cottage<br>Enford<br>Tel: 670033<br><b>peterpaulkenny@aol.com</b> |
|---|----|---|



**Friday 7<sup>th</sup> June 2013 – Upavon**





**ENFORD VILLAGE HALL FILM CLUB**  
**Tuesday 30<sup>th</sup> April**



# ARGO

***Oscar Winner of Best Film and Best Adapted Screenplay  
2013***

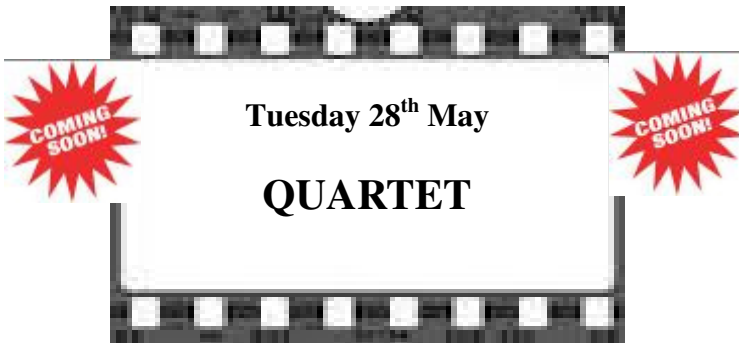
Based on a true story - Tehran 1979..... Students demanding the extradition from the US of the former Shah to face trial have laid siege to the US Embassy, taking 90 people hostage. However, six American diplomats have managed to escape to the Canadian Embassy, and are in hiding, hoping for a miracle. Exfiltration expert Tony Mendez (**Ben Affleck**) devises a daring ruse: posing as the Producer of a fake Canadian “Star Wars” type movie project filming in the Iranian desert, he plans to smuggle the six out as production crew.

**Tickets £5.00 each booked in advance and £6.00 on the night**  
**To book tickets and for more information contact 01980 670501 or**  
**e-mail: [enfordvillagehall@btinternet.com](mailto:enfordvillagehall@btinternet.com)**

**Doors open 7.00 p.m.**  
**Film Starts at 7.30 p.m.**  
**Drinks available from the Bar**

If you would like to be included in our e-mail contact list for all Enford Village Hall events, including the film nights,  
please contact 01980 670501 or e-mail [enfordvillagehall@btinternet.com](mailto:enfordvillagehall@btinternet.com)

---



The poster features a central white rectangle with a black border, set against a background of a film strip. On either side of the rectangle is a red starburst graphic with the text "COMING SOON!". The text on the poster reads:

**Tuesday 28<sup>th</sup> May**

**QUARTET**

# YOUTH CLUB AT ENFORD VILLAGE HALL

Every Friday night

6 – 8pm

Children aged 5-16

No need to book - just turn up

£1 per week

(membership required after initial visit)

- Youth Club is about having fun at the end of the week
- Craft activities
- Sweet shop
- Indoor sports like table tennis, table hockey and snooker
- Outdoor sports on the playing field during summer
- You decide what you want to do

**Come and join us, all welcome!**

**For more information call: Bruce Carter – 07872335579**



***CHISENBURY PRIORY GARDENS***

***OPEN DAY***  
***SUNDAY 16TH JUNE***

***2.00 pm to 6.30 pm***

***Entrance £4.00 Children Free***  
***Plants also for Sale***

Please come along and stroll around these magnificent gardens  
Enjoy delicious homemade teas in this wonderful setting

**TEAS IN AID OF ENFORD CHURCH**



## CHRISTIAN AID WEEK 12th - 18th May

Last year's national total was an incredible £12.5 million. There will be house-to-house collections again this year in Enford, Fittleton, Netheravon, Figheldean, Milston & Bulford.

**Your support is vital to help tackle hunger:** if we bite back at hunger this Christian Aid Week, we can help communities find ways to not only survive but to thrive, with enough food to eat not just today but tomorrow.

**Please look out for the red envelope being delivered through your door.**

---

### NEWSLETTER CHRISTMAS MEAL AT THE SWAN

Earlier this month the Newsletter Committee went for their late, late Christmas meal at the Swan.

A roaring fire greeted us on a freezing cold night. The food, which without exception, was thoroughly enjoyed by us all and came in copious quantities. It was accompanied by a nice bottle of wine and good company. What more could you ask?

Being a Tuesday there were quite a few others enjoying dinner before the quiz therefore the buzz of conversation made up for the lack of any background music.

We were coerced into taking part in the quiz which proved to be great fun with a lot of banter.

All in all we had a very good evening.

---

### ORIGINS OF MAY DAY

The earliest May Day celebrations appeared in pre-Christian times, with the festival of Flora, the Roman goddess of flowers, and the Walpurgis Night celebrations of the Germanic countries. It is also associated with the Gaelic Beltane. Many pagan celebrations were abandoned or Christianized during the process of conversion in Europe. A more secular version of May Day continues to be observed in Europe and America. In this form, May Day may be best known for its tradition of dancing the maypole dance and crowning of the Queen of the May. Various Neo pagan groups celebrate re-constructed (to varying degrees) versions of these customs on May 1st.



The day was a traditional summer holiday in many pre-Christian European pagan cultures. While February 1 was the first day of Spring, May 1 was the first day of summer; hence, the summer solstice on June 25 (now June 21) was Midsummer. In the Roman Catholic tradition, May is observed as Mary's month, and in these circles May Day is usually a celebration of the Blessed Virgin Mary. In this connection, in works of art, school skits, and so forth, Mary's head will often be adorned with flowers in a May crowning. Fading in popularity since the late 20th century is the giving of "May baskets," small baskets of sweets and/or flowers, usually left anonymously on neighbours' doorsteps. *Wikipedia*

## KNITTING TO HELP OTHERS

Carol Hillier and her Mum have been knitting to help others for many years. She was first inspired by a film made by Save The Children she went to see with her Grandmother. She has written to Jane Young who receives the blankets and then sends them to various charities around the world. This is an extract from Carl's letter to Jane.

*Dear Jane.....*

*..... Years ago I went to see a film made by Save the Children with my Grandmother. The film showed blankets etc being handed out as well as showing some that people had had for a long time.*

Carol has knitted blankets for Save The Children, Feed the Children, Romanian orphanages and more recently for The Gambia.

## A THANK YOU FROM JANE TO CAROL AND HER MOTHER

A huge thank you to Carol Hillier and her mother as between the two of them they have knitted over 300 blankets for the charities whom I support. Carol's mum reluctantly has had to stop because of arthritis. Carol is still knitting for me and I regularly receive a black sack on my doorstep in which there are twelve blankets. I think they deserve a well earned thank you from me and all the people who have benefited from them.

I am so very grateful.  
Thanks  
Jane

**Netheravon All Saints Primary School**  
**Summer Fair**  
**8th June 2013**  
**1pm till 3.30**  
**Everyone Welcome**

***M NASH & P WILKINS***

***ALL LANDSCAPING WORK UNDERTAKEN***  
***FENCING\*PATIOS\*PATHS\*POND\****  
***BRICKWORK***  
***HEDGECUTTING\*GARDEN CLEARANCE***  
***GRASSCUTTING***

***Tel: MIKE 01380 840767***  
***Mobile:07977 950654***  
***Tel: PAUL 01380 840763***  
***Mobile: 07970 557002***

**Bits & Pieces** (Durrington Ltd)

***BUILDING, GARDENING & DIY***

***PETS, PANELS, AGGREGATE***

**37 - 39 Bulford Road, Durrington Wiltshire SP4 8DL**

**Tel: 01980 655552**  
**Fax: 01980 652351**

**Proprietors: P & M Conn**

## ENFORD GARDENING CLUB SPRING PROGRAMME 2013

### Thursday May 9<sup>th</sup>

Dave Moon Will speak on *The National Gardens Scheme and its gardens*. The evening will consist of digital audio visual sequences on some of the gardens open under the scheme. Each individual sequence is set to either narration, music, song or poetry and I usually manage to visit about a dozen gardens during the evening.’  
We look forward to seeing you

### Thursday June 13<sup>th</sup>

Garden visit to Sara Everett’s garden, Enford Grange  
Lifts can be arranged, if necessary.



### Thursday July 11<sup>th</sup>

Garden visit to Brian Thompson’s garden, Alexander Fields, Upavon  
Lifts can be arranged, if necessary.

**All meetings take place in Enford Village Hall 6.45 for 7.00  
Tea & coffee available and plants for sale**

The Garden Club experienced a few worrying hours when the speaker for April , the Bee Man, at very short notice, announced he was not coming! The evening was saved by Carol Davies answering many and varied questions put to her by members. Carol has been the guiding hand in the garden at Longstreet House for a number of years and her answers to all the questions proved she certainly “knows her onions”! Questions ranged from planting a fig tree, how best to move a Magnolia, to using coloured hair spray to prolong colour on Alliums!! Carol was ably assisted by Lowenna Harbottle who is in charge of the plant table every month. The evening proved to be a great success .



Stonehenge and Pewsey Vale

**JOIN US AT TWO GREAT EVENTS IN MAY** - We start this year’s fund raising with a **Charity Bridge Day on Wednesday 1st May** at The Bouverie Hall in Pewsey from 10 am until 3 pm. Tickets are £20 to include coffee, a two course lunch and a glass of wine.

Contact Diane Robinson on 01264 850967 or Hugh Gross from Bottlesford Bridge on 01672 851530.

Our second event during Manic May is a Coffee Morning on Saturday 11th May from 10 am until 12 midday at the Village Hall, Collingbourne Kingston SN8 3SE. We will have a range of stalls including plants, nearly new children’s clothes and toys, so come along, bring some friends and together we can make a difference.



### NETHERAVON LIBRARY

Netheravon is open on Mondays  
from 1pm -7pm and on Thursdays from 1pm-5pm.

We can order any book you want in a few days and have a pretty wide range.

Local school children do come in and we get a regular group visit each week.  
Why not bring your children along and join as a family.

All Wiltshire libraries, except the main ones,  
are all staffed by volunteers who do an excellent job.

We would love to have more visitors  
Look forward to seeing you soon.



Roz Perry  
Volunteer

## **SSAFA's** new brand puts family first. Armed Forces charity updates image to reach the Forces and their families.

SSAFA Forces Help has changed its name to SSAFA as part of a rebrand aimed at improving awareness of the charity amongst members of the Forces community. The rebrand is designed to help SSAFA reach more clients by describing the charity, and the support it provides, in a more clear and consistent way.

Last year alone, the Wiltshire and Swindon Branch supported more than 1,000 veterans and their families and the charity is increasingly helping younger veterans, many of whom are in their 20s and 30s.

**Find out more about SSAFA in Wiltshire at [www.ssafa-wilts.com](http://www.ssafa-wilts.com).**

# Enford Church Summer Concert

featuring the



7.30 pm on Fri 7<sup>th</sup> June 2013

Tickets £12 each - includes canapés and a glass of wine  
(under 12s free)

Tickets will include canapés and a glass of wine

Tickets on sale from Fri 10<sup>th</sup> May

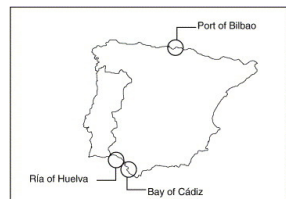
Contact 01980 671 494

## 3 BEDROOM Beautiful Villa to rent - S.W. SPAIN ( near Cadiz)



Large villa (sleeps 6 max) with fully maintained large garden and large swimming pool to rent until September. Two double bedrooms (one en suite) and a children's room which could take 2 single beds. 10 minutes drive from stunning beaches and coves.

Contact Julian Lee: 0207 651 0850 (work)  
07831 225992 (mobile)



## Vietnam, Cambodia and Thailand – Part 2

Continued.....

From Hoi An, approximately half way down the coastline of Vietnam, we headed up into the highlands to meet the ethnic tribes, whose lives haven't changed for centuries. The scenery was stunning as we climbed the narrow winding roads, but always at the back of my mind was how it must have been in the war; the Americans struggling with the stifling heat and humidity, hacking their way through the jungle terrain, and for the local people trying to hide from the napalm and Agent Orange poisoning their perfectly tended fields of rice and vegetables, orchards of mango, papaya and banana, not to mention their water supply.

How lucky we are of this generation not to have experienced the horrors we see on TV – even today.

In spite of this the days we spent up there were some of the most enjoyable for me. Long hikes through the hills, the peace and tranquility, the friendliness of everyone we came across. Without exception we were greeted with waves and shouts, curious stares and toothless grins from the older people. The rolling hills and lush green countryside were magnificent.

Another highlight was about to unfold when we found ourselves at the side of a large lake in the company of several elephants! We were invited to climb aboard for a trip 'across' the lake!?! How, I wondered, could we go **across** the lake on an elephant, surely you needed a boat for that. We trundled off down the main road of the village and took the path around the lake, happily admiring the mountain views and beautiful scenery when, yes, the elephants decided to venture into the water – and carried on going. We happened to be on the back of one of the two smallest and before long found that she was swimming, head almost submerged, with just the 'snorkel' above the surface!

That night we were invited by the tribal chief to a display by the local people in their 'longhouse', a very steep pitched thatched 'village meeting place' on stilts! They don't see many visitors so it was a special time for all of us, sitting on mattresses, trying out their local 'pipes', a variation of the hubble-bubble pipes of the East, and listening the various drums and instruments accompanying the dancers and singers.



A few days later we reluctantly said our goodbyes to these hospitable people and headed down again onto the coastal plains to the town of Nha Trang, the up-and-coming 'holiday resort' centre of Vietnam. Virtually every inch of the seafont has been bought by huge conglomerates to build holiday resorts, not even leaving as much as a three foot gap to allow locals to get to the beach! Cranes and bulldozers everywhere! What a change from the environment we'd just left. Very soon this area will have gone the same way as much of Thailand – ruined by us, the tourists!

Our main reason for coming here was to explore the amazing cave complex in the hills behind the town which is known for its marble carving. Six metre tall Buddhas were hidden away in the depths of the caves in temples and shrines; well worth a visit. We'd also heard of a very good outdoor spa and thought this would be a great opportunity to get ourselves clean and rejuvenated for the next stretch of the trip.

We went as a group of a dozen or so and I think we all had rather a big surprise when we found ourselves wallowing, all together, in a small mudbath! This was a salt water mudbath, so we floated. Of course this meant we were writhing around like hippos trying to maintain some sense of decorum but failing miserably. It was rather up close and personal at times but good fun nevertheless! From the mudbath we were sent to a natural waterfall to be pelted with cold water before entering the warm swimming pool.

It was dark when we eventually left, feeling very relaxed, BUT - totally unaware of the fact that we were being bitten to death by insects while waiting for our bus back to our hotel!

Once we left the main town a couple of days later the splendour of the coastline became apparent; totally unspoiled, miles and miles of blue sea and golden sand. Needless to say it didn't take us long before we were having a cooling swim on China Beach and wondering how long it would be before all this would be swallowed up in concrete.

By this time we had had a good taste of the terrain in Vietnam so took a flight down to Saigon to save time.

It was only then that I realized just how varied each of our stops had been, from the frenzied activity of Hanoi to bombed out Hue, to the perfectly preserved town of Hoi An on the banks of the river, to the hill tribes in the Highlands, the building site of Nha Trang and its beautiful beaches, and now, Saigon, as modern a city as you'd see anywhere in the world. We had arrived at a perfect time, just before Chinese New Year, so the city was lit up with typical Chinese-style extravagance, fairy lights adorning every tree, lamp post, shop and office.

Fed up yet?? There's more.....



## MOTHERS' UNION

Thank you to everyone who supported their Nearly New Sale to raise money to sponsor a local family to go on the MU holiday in Sidmouth this summer. We want to be able to meet the cost of sending 1 adult & 2 children. We raised £376 (cost for an adult is £375) - thanks to a very generous donation we now have almost enough to sponsor the 2 children as well.

We plan to have one final push by holding a coffee morning on Sat 15th June at the vicarage in Netheravon, and any surplus monies will be sent to MU's overseas relief fund.

### Wiltshire Police.

Ludgershall and Rural Neighbourhood Policing Team.

Your team consists of:

Police Constable 1256 Noyce Tel: 07528 972716

PCSO 6235 Philippa Royston Tel: 07528 972892

PCSO 6078 Maria Downham Tel: 07528 972563

E-mail [tidworthnpt@wiltshire.pnn.police.uk](mailto:tidworthnpt@wiltshire.pnn.police.uk)



You can find the latest local bulletin on the Newsletter website

[www.enfordnewsletter.org](http://www.enfordnewsletter.org)

## **PARISH COUNCIL NOTES**

**Enford Bridge** The Parish Council have approved the additional safety design for Enford Bridge. It consists of two sets of steel wires, one set between the middle and bottom railing and the other set between the bottom railing and the bridge itself. Wiltshire Council confirms that it will be completed by 1 June. The street light removed at the NW corner of the bridge during the building of the new pavement over the bridge will be replaced by the same time.

**Council Elections - 2nd May 2013** The Elections in the Village Hall on 2nd May for the Enford Parish Council and Wiltshire County Council will not take place due as both are uncontested.

Mr Charles Howard will remain our County Councillor. With effect 2 May the members of the Enford Parish Council are Mr Ken Monk, Mr Norman Beardsley, Mr Stan Bagwell, Mrs Jane Young, Mrs Tessa Manser, Mr Michael Fay, Mr Adrian Orr, Mr David Harbottle and Mr Anthony D'Arcy-Irvine. Mrs Elizabeth Harrison remains Enford Parish Clerk.

### **Proposed dates for PC Meetings**

22<sup>nd</sup> May      26<sup>th</sup> June3      1<sup>st</sup> July



## **Amesbury Town Band "Spring Concert"**



**Saturday 11<sup>th</sup> May 7.30pm, Amesbury Methodist Church**

Tickets are on sale at Amesbury Community Shop (10-4pm), Saturday Coffee morning at Amesbury Methodist Church (10am to 12pm) or telephone 01980 670362. Adults £7, Children £4 includes tea and homemade cake.

(Amesbury Methodist Church has a ramp at the front of the Church for easy access for those less able.)

Amesbury Town Band's "Spring Concert", led by their musical director Mr Clive Burroughs, is at Amesbury Methodist Church on Saturday 11<sup>th</sup> May. The band's repertoire is varied including tunes from the shows, marches and the most recent additions of "Skyfall" and "Poker Face". Informality and fun is the order of the evening. Band members are a blend of youth and experience- the percussion player is the youngest at age 13- but none are original founding members as the band dates back to the 1860s!

**Proceeds from the concert will go towards Amesbury Methodist Church building fund. The Church needs to raise approximately £25000 for essential building work.**

The Reverend Susan Holden, Minister of Amesbury Methodist Church said "We are delighted that our local Town Band are getting us off to a good start to our challenge of raising this sum. They are a wonderful band and we are really looking forward to welcoming everyone to our Church, in the heart of town, to hear them. And don't forget the homemade cakes as well." Make it a date! Buy your tickets now!



# **YOUR PARISH PLAN**

## **PUBLIC MEETING**

**TUESDAY 2<sup>ND</sup> JULY 7.30pm**

## **ENFORD VILLAGE HALL**

Come along and hear how we all responded to the questionnaire.  
Listen to and share your ideas as to how we all think the Parish  
should move forward in the coming years

Members of the Parish Council, the Parochial Church Council, the  
Parish Hall Committee, the Village Hall Committee, the Enford  
Community Fund, The Youth Club, and The Newsletter Committee  
have been invited to share their ideas and proposals for the future

**ENFORD MATTERS TO US ALL**

**Bar open from 7.00pm**





# **SUMMER FETE at ENFORD**

**SATURDAY 29 JUNE 2013**

**1.00-5.00pm. Free entry**

**FUN FOR ALL THE FAMILY**

Fantastic Raffle

Fun Dog Show, Doggie Dash, Pony Rides

Kids' Football Tournament

Children's fun and games including  
the Enford "Bake-Off" cake decorating competition

Punch & Judy

Coconut Shy, Inflatable Castle, Slide, Bungee run and Obstacle Course;

Beat The Goalie, Tug of War

Beer and Pimms

Burgers, Hot-Dogs and Ice Creams;

Village Teas and Cakes and music from Kennet Brass.

**If you are interested in hosting your own stall at the Fete (£10 a table), entering a tug of war team (8 per team) or have a raffle prize to donate, please contact Mandy (see below)**

## **HELPERS NEEDED!**

**If you would be able to help at the fete for a few hours, please contact Mandy :-  
amanda.farrow@chisenbury.co.uk or call 671343**

## Wiltshire Police

### Ludgershall and Rural Neighbourhood Policing Team

Your team consists of:

Police Constable 1256 Noyce

PCSO 6235 Philippa Royston

PCSO 6078 Maria Downham

E-mail [tidworthnpt@wiltshire.pnn.police.uk](mailto:tidworthnpt@wiltshire.pnn.police.uk)



April 2013  
Enford Article

Most trades people who call at a one's home will be genuine, but at any time someone may turn up with the intention of tricking his or her way in, to steal money or valuables. It is best to be cautious when someone calls at the door, putting the door chain on before anything else. Check using the spy hole or window to see if the caller is known, and if not – keep the door shut. Any official visitor should arrange an appointment prior to attending and will carry identification. Most distraction burglars tell the victim they are from a company such as the water works, electric or gas board, council, or police. So it is important do not take an identification badge at face value. Use the phone book and call the organisation they say they are from to check that they are genuine. An official caller should not mind waiting. Most victims say afterwards that they thought there was something suspicious about the caller. If you have any doubts at all do not open the door and call the police.

#### Reported incidents:

Three vehicles were seen acting suspiciously in East Chisenbury, they were a Jaguar XJ, a pick-up and a VW people carrier, please pass any information or further sightings to us. A 54 plated BMW 320, colour black, has been reported repeatedly speeding along the A345 at Enford. Please contact us if the vehicle is seen speeding again.

#### And finally,

Don't you just love those nuisance phone cold callers? I'm on "call barring" so when I do get one of those calls, which seems to happen more and more frequently, then World War Three takes place before one of us hangs up, and my family say that I was really rude (but never abusive) to a person who is only doing a job. One caller the other day was trying to get me to allow him remote access to my computer (yeah, like!!!). But on a more serious note, if someone cold calls you and asks for remote access to your computer (or informs you that you have won a prize for a lottery you did not know you had entered, and you need to send them some money) then please, please, please..... HANG UP. If they keep pestering you then get their details and report them to your service provider. These people have no scruples, they just want your money and they don't care how they get it. Trust me on that, as I have dealt with too many victims who have thought that they would never be conned in such a way, but have all too easily become a victim. So just remember it's not just the cold caller at your door you need to be aware of.....A couple of services that may assist in preventing phone cold callers and mail are:

#### Registering with the Telephone Preference Service

This is a free service. Registration can be made on line [www.tpsonline.org.uk](http://www.tpsonline.org.uk) or by telephoning 0845 070 0707.

#### Registering with the Mailing Preference Service

This is a free service. Registration can be made on line [www.mpsonline.org.uk](http://www.mpsonline.org.uk) or by phone to 0845 703 4599.



# VILLAGE HALL & RECREATION GROUND

enfordvillagehall@btinternet.com

01980 670501

## ENFORD FOOTBALL CLUB

Contact Ollie Stagg  
01980 670634  
for further information and to join in!

### YOUTH FOOTBALL SESSIONS

**SATURDAY MORNINGS**  
**1030 TO 1130**  
**£2.00 PER SESSION**

Contact Ollie Stagg  
01980 670634

## DATES FOR THE DIARY

### FILM NIGHTS

**28th May**  
**25th June**  
**23rd July**

**SUMMER FETE**  
**Saturday 29th June**

| Day   | Activity  | Time  | Contact   |
|-------|---|---|---|
| Mon   | Toddlers & Parents                                | 10.00am - 1200                                    | Tracy Southard<br>tracysouthard@btinternet.com                  |
| Mon   | Yoga Beginners' Class<br>Yoga Intermediate        | 6.00pm – 7.15 pm<br>7.30pm—9.00pm                 | Emma Pettitt 01980 670510<br>emma@pettittbros.co.uk             |
| Tues  | Enford Film Club                                  | 3rd Tuesday in the month<br>Doors open 7.00 pm    | Martin Webb 07961 458058<br>enfordfilmclub@gmail.com            |
| Wed   | Body Conditioning<br>& Bootcamp                   | 6.30 pm – 7.30 pm<br>(new time April—<br>October) | Helen Gould-Cooper 01980 670324<br>h.gouldcooper@virgin.net     |
| Wed   | Short Mat Bowls                                   | 7.30 pm – 10.00 pm                                | David Spencer 01980 670526<br>spencersgb@yahoo.co.uk            |
| Thurs | Pilates   | 8.45 am – 9.45am                                  | Nicci Caswell 01980 625245 Work<br>niccicaswell@btopenworld.com |
| Thurs | Camera Club                                       | 8.00 pm – 9.00 pm<br>1st Thursday in the<br>month | Martin Webb 01980 670537<br>webb14@btinternet.com               |
| Thurs | Gardening Club                                    | 6.45 pm – 8.45 pm<br>2nd Thursday in the<br>month | Fanny Middleton 01980 671645<br>fannysurtees@btinternet.com     |
| Fri   | Youth Club  | 6.00 pm – 9.00 p.m.                               | Katrina Knight 01980 670492<br>Bruce Carter 01980 670006        |
| Sat   | Children's Sports Foot-<br>ball Coaching Sessions | 10.30am -11.30 am<br>Recreation Ground            | Ollie Stagg 01980 670634  |
| Sat   | Enford Football Club                              | Recreation Ground                                 | Ollie Stagg 01980 670634  |
| Sun   | Red Lion Football Club                            | Recreation Ground                                 | Ian Fribbens<br>ian.fribbens@btinternet.com                     |

### CHURCH SERVICES

#### May

|      |   |
|------|---|
| 5th  | 9.00am Holy Communion                     |
| 12th | 10.30am United Team Service at Figheldean |
| 19th | 10.30am Family Service                    |
| 26th | 6.00pm Evensong                           |

**You can also view services in the Benefice at [www.avonriverteam.org.uk](http://www.avonriverteam.org.uk)**



**For more details please contact  
Rev. Mark Zammit. 01980 653953**

#### May

#### CHURCH CLEANING ROTA

#### June

|      |                                 |
|------|---------------------------------|
| 3rd  | Tanya Becker & Linda Mundy*     |
| 10th | Paula de Chalus & Amanda*       |
| 17th | Gai Rickett & Lowenna Harbottle |
| 24th | Lyn Riche & Fanny Middleton     |
| 31st | Helen Hadfield & Jill Mitchell  |

|      |                                    |
|------|------------------------------------|
| 7th  | Sue Poole-Warren & Hilary Horsford |
| 14th | Paula de Chalus & Amanda Marx      |
| 21st | Tanya Becker & Linda Mundy         |
| 28th | Gai Rickett & Lowenna Harbottle    |



## FROM THE RECTOR

### May 19: Pentecost/Whit Sunday – the birthday of the Church

Pentecost took place on the well established Jewish festival of Firstfruits, which was observed at the beginning of the wheat harvest. It was exactly 50 days after the Passover, the time of Jesus' crucifixion.

A feast day to celebrate the country's wheat harvest does not sound exactly world-changing, but that year, it became one of the most important days in world history. For Pentecost was the day that Jesus sent the Holy Spirit - the day the Church was born. Jesus had told his apostles that something big was going to happen, and that they were to wait for it in Jerusalem, instead of returning to Galilee. Jesus had plans for his apostles – but he knew they could not do the work themselves – they would need his help.

And so the apostles and disciples waited in Jerusalem, praying together for several days. And then on that fateful morning there was suddenly the sound as of a mighty rushing wind. Tongues of flame flickered on their heads, and they began to praise God in many tongues – to the astonishment of those who heard them. The curse of Babel (Genesis 11: 1- 9) was dramatically reversed that morning.

That morning the Holy Spirit came to indwell the apostles and disciples of Jesus: and the Church was born. The Christians were suddenly full of life and power, utterly different from their former fearful selves. The change in them was permanent.

Peter gave the first ever sermon of the Christian church that morning: proclaiming Jesus was the Messiah. His boldness in the face of possible death was in marked contrast to the man who had denied Jesus 50 days before. And 3,000 people responded, were converted, and were baptised. How's that for fast church growth!

Of course Pentecost was not the first time the Holy Spirit had acted in this world. All through the Old Testament there are accounts of how God's Spirit guided people and strengthened them. But now, because of Christ's death and resurrection, he could INDWELL them. From now on, every Christian could have the confidence that Jesus was with them constantly, through the indwelling of the Holy Spirit..

*Mark Zammit*

### May in the Green Wode

"In somer when the shawes be sheyne,  
And leves be large and long,  
Hit is full merry in feyre foreste  
To here the foulys song.

To see the dere draw to the dale  
And leve the hilles hee,  
And shadow him in the leves grene  
Under the green-wode tree.

Hit befell on Whitsontide  
Early in a May mornynge,  
The Sonne up faire can shyne,  
And the briddis mery can syng."

*Anonymous, 15th Century*



MINISTRY OF DEFENCE

**SALISBURY PLAIN TRAINING AREA  
NEWS SHEET  
May 2013**

Defence  
Infrastructure  
Organisation

**Ridgeway.** The refurbishment of Ridgeway from Joan a Gore Cross to Crossing Bravo is complete. In the near future MOD vehicles will be directed to use the new military road from Imber Ranges to Market Lavington Vedettel. This will leave the tarmac road free for civilian traffic.

**Major Exercises from 19 – 30 May:** There will be heavy use of tank crossings on the Tilshead/Chitterne road, A360, and A345 and training noise during unsociable hours and significant air activity with both helicopters and fast jets flying at low altitude.

**TRAINING**

1 – 3 May: 19 Regiment Royal Artillery will complete its conversion to AS 90 155mm self-propelled guns on 3 may and depart from the training area.

1 and 2 May: Land Warfare Centre (LWC) Armoured Division will train with Challenger tanks (Exercise FIRST VIEW) on SPTA East.

3 – 16 May sees the new multi-national European Union Battle Group training on the West and around Copehill Down. The battle group consists of elements from 42 Com-mando Royal Marines with sub-units from Sweden, Netherlands (Marine company), Lithuania (infantry company), and Latvia (motorised infantry company). A major live firing exercise is scheduled for 10 – 12 May.

13 – 17 May: LWC exercise BADGERS STRESS runs with light armoured vehicles across the whole Plain plus Warrior fighting vehicles on exercise RARDENS REVENGE.

17 – 19 May: A quiet weekend.

20- 24 May sees Combined Arms Tactical Division final exercise LIONS STRIKE (the largest armoured exercise conducted on Salisbury Plain) on the West and Centre.

27 – 30 May: Armoured and Armoured Infantry Division exercise TEAM SPIRIT will train across the whole Plain.

**Late firing on Larkhill Ranges on: 2, 7, 14, 16, 21, 23, 28, 30 May**

**Live firing on Salisbury Plain (East): Nil**

**AS90 Firing from Tilshead, Chitterne, Shrewton triangle: Nil**

**Complaints about Firing Noise should be made to (01980) 620819.**

**Military Flying** – Helicopters, Hercules (C130) and fast jets may be active at any time. Fox Covert & Everleigh Dropping Zones will be active for most of the period.

**Complaints about low flying should be made to  
0207 218 6020 or e-mail [www.gov.uk/low-flying-in-your-area](http://www.gov.uk/low-flying-in-your-area)**

**Provisional Dates for Major Exercises.** During the following exercise access may be restricted on Larkhill Ranges and in the Chitterne – Shrewton – Tilshead Triangle north of the B390.

|                  |   |                  |                          |
|------------------|---|------------------|--------------------------|
| <b>10 Jun 13</b> | - | <b>24 Jun 13</b> | <b>Ex WESSEX STORM</b>   |
| <b>26 Aug 13</b> | - | <b>13 Sep 13</b> | <b>Ex PASHTUN DAWN</b>   |
| <b>11 Nov 13</b> | - | <b>25 Nov 13</b> | <b>Ex WESSEX THUNDER</b> |

Access to SPTA is regulated by Salisbury Plain Military Lands, Bulford, Larkhill and Imber Range Byelaws. Always comply with local signs and flags. Public rights of way located in Range Danger Areas are closed when red flags are flying.

**Larkhill Ranges**

No firing is planned for: 4, 5, 10, 11, 12, 18, 19, 25, 26 May

Note: Due to the risk of “cook off” from unexploded ordnance the range is closed during fires.

**Bulford Ranges**

No firing is planned for 1-20, 25, 26 May

**Imber Ranges**

The public are excluded except when the roads are specifically opened.

|   |                                      |
|---|--------------------------------------|
| <b>Provisional Summer Opening Dates</b>         | 1600 2/08 - 0800 23/08               |
| <b>St Giles Day</b>                             | 21/22 September                      |
| <b>Remembrance Service</b>                      | 09/11 ( access from Warminster only) |
| <b>Provisional Christmas and New Year Dates</b> | 1600 20/12 - 0800 06/01/14           |

1. Even when roads are open the village and buildings remain out of bounds to the public.
2. Dates may change if operational training needs dictate.
3. Church opening times can be found at [www.imberchurch.org.uk](http://www.imberchurch.org.uk).

**What Can You Do to Reduce Crime on Salisbury Plain?**

If a crime is taking place call 999 and do not challenge the offenders.

Report suspicious activity to PLAINWATCH (01980 674700). The more information received the better e.g. time, place, vehicle registration, description of individuals and vehicles.



N D LINGE MBE  
Lt Col (Retd)  
for Commander DTE SW



# Grittleton Plant and Food Fair

Grittleton House, Chippenham SN14 6AP  
(By kind permission of the Shipp Family)

**Sunday 12 May 2013**  
**11am to 4pm**

Entrance £3 per person  
£5 per family  
£15 per group of 10 adults

**Specialist nurseries and  
locally sourced food stalls**  
Refreshments and teas  
[action.org.uk/grittleton](http://action.org.uk/grittleton)



£20 per 1/8 page for 10 issues  
£45 per 1/3 page for 10 issues

Please contact Gay Monk  
01980 670540

# Advertising

## Geraldine Francis & Daisy Chains



Sculpture Studio: Unit 10 Nursery Farm  
Woodborough. (Garden Centre)

### Garden sculpture

Studio based or mobile pottery  
and craft lessons/parties, all ages

For details or visit:- Call: 01380 729269 or  
email:geri@professor-radd.co.uk



C10079

## M.A.B HEATING

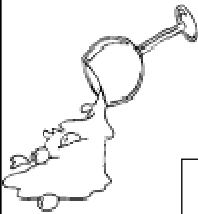
Boiler and Heating Services

Oil, Gas and LPG

Very competitive charges for boiler servicing and breakdowns  
Boiler Replacements  
Professional and friendly service  
7 Days a week inc Bank Holidays

Please call Mark on:

Tel: 01747 828689 or Mobile: 07974 249287



## OOPS HAPPENS!

Time to call **Clean Living** carpet and upholstery cleaners – Where Really Clean Really Matters!

### \*\*SPECIAL OFFER\*\*

If you have your lounge carpet cleaned and stain protected - we will  
clean your hall and stairs for **FREE!**

For your **FREE SURVEY** call Steve  
on **01980 621621**



*Mrs Mitchell of Enford is delighted with our quality and service.*

## Avon Security

MASTER LOCKSMITHS

### Engraving Service Now Available

- > Brass
- > Plastics
- > Aluminium
- > Glass
- > Trophies
- > Gifts

### Free Advice & Quotations On Securing Your Property & Belongings

- Key Cutting
- Locks Supplied & Fitted
- Access Control
- Safes
- PVCu Locks
- Master Key Systems
- Lock Repairs
- Door Furniture & Ironmongery
- Transponder Car Keys
- Keys To Code
- Watch Batteries & Straps
- Emergency Call Out Service



# 01980 626000

21, Salisbury Street, Amesbury, Wiltshire, SP4 7AW  
[www.avonsecurity.net](http://www.avonsecurity.net)





**EAST CHISENBURY**

**COME AND ENJOY ONE OF OUR LEGENDARY SUNDAY ROASTS  
WITH A PRIX FIXE 2 COURSE ROAST  
& CRUMBLE FOR £18 !**

**OPEN ALL DAY SUNDAY  
(FOOD SERVED 12-3)  
NOW OPEN MONDAYS TOO!**

**BOOKINGS TAKEN ON 01980 671124**

**GUY, BRITT & THE TEAM LOOK FORWARD TO SEEING YOU THERE**

# D Taylor

## Bricklayer & General Builder

**All Building Works  
Including Extensions, Garden Walls, Patios,  
Roof Repairs, Plastering  
Floor & Wall Tiling etc**

**01980 554008  
Mobile No: 07719 916854**

# Wags & Whiskers

**Pet Care Services**

Putting All Your Pet's Needs

**DOG  
WALKING**

**HOME  
SITTING**

**PET  
TAXI**

**PET  
SITTING**

**FULLY  
INSURED**



**FRIENDLY  
&  
RELIABLE  
SERVICE**

Tel: 01980 670261

Mob: 07969 284913

Email: [wags2whiskers@live.co.uk](mailto:wags2whiskers@live.co.uk)



# Coombe Electrics

Your local domestic electrician  
Reliable and friendly service  
No callout charge for Enford, Coombe & Chilsenbury

Call Steve on 07508 621120  
or 01980 670345

[steve@becker.globalnet.co.uk](mailto:steve@becker.globalnet.co.uk)



# Avonbridge Construction Ltd

For all your building needs  
Kitchens, bathrooms &  
home improvements

Telephone 01980 624187  
or 07850 989684

[avonbridgelt@btinternet.com](mailto:avonbridgelt@btinternet.com)

**Self Employed  
Office Administrator/Manager/PA**

Has availability for part-time hrs/days per week for  
general office admin., marketing, sales, PR

Own transport -Full Driving Licence  
CRB certificate -Good communicator  
CV and References available

**Please contact Elizabeth on 07729 526531  
or email: [eabh@btinternet.com](mailto:eabh@btinternet.com)**

**GRAHAM BUCKLAND SERVICES**

General building maintenance: plumbing, Carpentry, glazing, brickwork, etc  
Free quotes and reasonable rates

'Man with a Van' hire.  
Removals and House Clearance  
Undertaken

Tel: **01980 670870**  
or **07831 889 666**

**ELSTON VETERINARY CLINIC**

ELSTON LANE, SHREWTON  
Dr. Enid Frantilla, DVM MRCVS  
Small Animal Medicine and Surgery  
Providing high quality pet healthcare  
and a caring, friendly professional service  
**HELPING YOU TO HELP YOUR PETS!!**  
Consultations by appointment, Mon-Sat  
For appointments or enquiries, and  
**24 HOUR EMERGENCY SERVICE**  
01980 621999

**CAROL G DAYTON**

ITEC MGPP IHHT T.A.Th  
For further information please call:

Massage Therapist                      Reiki  
Indian Head Massage                  Ear Candles  
Reflexology                                Injury Treatment  
Skenar Therapy                          Waxing and Sugaring

**01980 653151**  
or **07787 513563**

**TIM BUCKLAND BOILER MAINTENANCE**

FOR SERVICE AND BREAKDOWNS

Friendly and efficient service  
Wide stock of boiler spares in stock

**VERY COMPETITIVE PRICES**

Also AGAs and RAYBURNS serviced

Tel: **01980 625846**

**KD WORSDELL**

**Carpentry & Joinery  
Building Works & Maintenance  
Bathrooms and Kitchens**

**Please Call**  
**01980 630545**  
**Or**  
**07759 586162**

**ABSOLUTE LANDSCAPES**

Mr Wayne Bawden  
City & Guilds qualified (Horticulture)

'Professional, experienced local landscaper'  
Drives / Patios / Paths / Decking / Fencing  
Hedge Cutting & Reduction  
Lawn Replacement (turf or seed)  
Complete Landscape of Gardens  
Renovation and Restoration.

Portfolio of work done available on request.  
Free estimates, please call Wayne  
01980 671726 / 07795 058379

**CAN I HELP?**

**CONSERVATORY CLEANING, WINDOW CLEANING GENERAL MAINTENANCE**

Has your conservatory lost its new shiny look, windows impossible to clean?

**CAN I HELP could be the solution**

Other things undertaken include painting and decorating, brickwork and carpentry or any task in the home and garden.

Man and Van service also available.  
All work is guaranteed.

For a free quote and written estimate if requested contact

**Contact Peter 07875 238730**

**OIL FIRED BOILERS**

**For prompt reliable –  
SERVICING  
REPAIRS  
COMMISSIONING**

**Call Tim Walsh**

**Tel. 01980 652803**  
**Mobile 07919603884**

**RGV ENGINEERING  
(NETHERAVON) Ltd**  
**High Street, Netheravon**  
**01980 670667**

Specialists in Plumbing,  
 Heating and Electrical Works  
 Also Boiler Servicing and  
 Commissioning

Interested in renewable Energy?  
 Please see our website for details  
 Www.rgvengineering.co.uk  
 GAS SAFE\*OFTEC\*NICEIC\*ECA

**MODERN & TRADITIONALLY  
DESIGNED MEMORIALS**

**M J SLY**  
*Monumental Stonemason*

*New Memorials, Additional Inscriptions  
 Restorations, Free Home Visits  
 Free Brochure*

**Marlborough (01672) 516797**  
 Email: martin@mjsly.co.uk  
 Website: www.mjsly.co.uk

*Workshop & Showroom at Pelham Court,  
 London Road,  
 Marlborough, Wiltshire*



**Got Chickens?**

Do you find it impossible to go away because you can't find anyone to care for them in your absence?

Then check out **The Little Chick Inn**. We offer local, secure, comfortable and affordable accommodation for your girls

**The Little Chick Inn 01980671285**



**B REPAIRED**  
**Musical Instrument Repairers**

**Graham & Yvonne Ballard**  
**The Music Studio 8 Thurlow Close**  
**Amesbury Nr. Salisbury**  
**Wiltshire SP47QG**

**01980 625380**  
**07957 806401/2**

[www.brepaired.co.uk](http://www.brepaired.co.uk)

**OIL TANKS** 



- COMPETITIVE PRICES.
- DOMESTIC & COMMERCIAL.
- FULL REPLACEMENT SERVICE.
- FRIENDLY & RELIABLE.
- FREE QUOTATIONS.

**TELEPHONE 01722 714514**

[www.tankservices.co.uk](http://www.tankservices.co.uk) Salisbury, Wiltshire, SP3 5NL

**THE OLD POST OFFICE B&B**  
**EVERLEIGH ROAD, HAXTON**

Double, twin, single & family suites


Call Jackie to book on  
**01980 671 640 / 07715 419 600**

[www.theoldpostoffice-wiltshire.co.uk](http://www.theoldpostoffice-wiltshire.co.uk)

**Oil Boiler**  
**Servicing, Commissioning & Repairs**

CALL  
**GRAHAM C BROWN & SON**  
**01980 622737**  
 Est. 1982

**FULLY QUALIFIED**  
**FULLY INSURED**  
**EXPERIENCED TECHNICIAN**



Registered Business

**GDB TECHNICAL SERVICES LIMITED**  
**Computer/IT support**

Small business and Home users  
 Networking issues/installations  
 PC Problems  
 Tuition  
 General IT advice/help  
 Upgrades  
 Data Recovery  
 Service Support Options  
 Call 01980 623052 or visit  
[www.gdbts.com](http://www.gdbts.com) to see if we can help.

# Tina's Hairdressers

High Street, Netheravon  
Unisex Salon  
Tel: 01980 670628

Tue 9-5 Wed 9-2 Thurs 1-7  
Fri 9-6 Sat 8.45-2

TIPZ & TOEZ  
nails now available  
*Appointments not always necessary*

# Phil Wakeford GARDENING & LANDSCAPING



Landscape Construction · Pruning Fruit Trees & Roses  
Garden Maintenance & Advice · Lawn Mowing  
25 Years Experience · Flower Meadows

**01980 670718 07194412396**

# A.R.C Studio Gallery

Arts, Rush & Cane: Sales, Tuition & Repairs

Original artwork, cards, prints,  
chairs and other crafts

Kings Hill, Netheravon, SP4 9PL

Open Monday, Tuesday, Friday  
other times by appointment.

07864-860522 erica.illustrator@btinternet.com



Come join the party!

**Netheravon Phoenix Hall  
Wednesday 6.30pm**

£4 per class. All standards welcome.

For more info call Selaine 07801 427358

# Southern Chimney Services

CHIMNEY SWEEPING & SURVEYS  
POTS & COWLS FITTED  
FLUE LINER INSTALLATIONS  
BURNER INSTALLATION

FOR RATES & APPOINTMENTS  
CALL PETE ON 07852120099

[www.southernchimneyservices.co.uk](http://www.southernchimneyservices.co.uk)

# WALSH TREE SERVICES

ARBORICULTURAL CONTRACTORS

All aspects of tree care and hedge maintenance  
professionally undertaken

ESTABLISHED IN 2000

**Free Quotations and Fully Insured**

**01980 670032 07712 006706**

# Salisbury Garden Machinery



For all your garden machinery needs.

Sales-Service-Repair-Hire  
22 Newton Rd, Churchfields, Salisbury. SP27QA.  
[www.salisburygardenmachinery.co.uk](http://www.salisburygardenmachinery.co.uk) 01722 322414

# AGRICENTRE

Now stocking Frontline for cats and  
dogs at an unrivalled price  
Excellent products at an excellent  
price from well-known horse  
wormers

Electrical fencing  
Complete range of Briswim pool  
chemicals

**FREE HOME DELIVERY!**

Contact: Justin Young, A.M.T.R.A.,  
SQP (Branch Manger)



### WILTON CARPETS

**JonCard**

**Your local contact for:**

**Great Carpets  
Great Choice  
Great Prices**

**Full Measuring, Estimating  
& Guaranteed Fitting**

**Email: joncard@wiltoncarpets.com  
01722 742733**

### PEST CONTROL SERVICE

*RABBITS, RATS, MOLES  
WASPS, SQUIRRELS  
BIRD PROOFING*

**CALL NIGEL**

**01980 670804  
07854 828904**

### Redmayne-Bentley Stockbrokers



*Your Share in the Stock Exchange*

To discuss how we can help please contact  
Hugh Lancaster

**Telephone:** 01980 671144

**Email:** Hugh.Lancaster@redmayne.co.uk

**Visit:** www.redmayne.co.uk



VAT No: GB 613 139 763.

Members of the London Stock Exchange  
Authorised and Regulated by the Financial Services Authority



### SEAN DEVINE PAINTER & DECORATOR



**Free estimates. Fully insured.  
For local professional service call:  
01980 630864 or 07870 454884**

### LOGS COAL, KINDLING ROCK SALT

**Dry Seasoned Logs - Oak, Ash, Beech, Apple**

**Loads (Small) £55/(Large) £100  
Bags Large £20 or 5 for £20**

**Free Delivery  
Contact Nick 07835 299247**

### YOGA CLASSES ENFORD VILLAGE HALL EVERY MONDAY

**Beginners/Gentle yoga 6.00—7.15pm**

**Intermediate Yoga 7.30—9.00pm**

**For details of other yoga classes visit  
www.emmapettit.co.uk  
Emma on 01980 670510**

### ROD SMITH

*The Garage Netheravon*

**UNIPART CAR CARE CENTRE**

**MOT Tests  
Car Repairs & Servicing  
Now able to service air conditioning units  
Batteries, Exhausts & Tyres  
at Competitive Prices  
Handy Gas**

**Tel: Stonehenge (01980) 670348**

### Soft Furnishings

by Helen Judd

**Loose covers**

**Cushions**

**Curtains**

**Roman blinds**

**Fabric sales**

For further information call:

Tel: **01980 625 442**

Mob: **07971 028 972**

## VILLAGE COMMITTEES

### PARISH COUNCIL

|                      |                    |               |
|----------------------|--------------------|---------------|
| <b>Chairman</b>      | Ken Monk           | <b>670540</b> |
| <b>Vice Chairman</b> | Adrian Orr         | <b>670447</b> |
| <b>Parish Clerk</b>  | Elizabeth Harrison | <b>670034</b> |
| <b>Councillors</b>   | Stan Bagwell       | <b>670154</b> |
|                      | Norman Beardsley   | <b>670860</b> |
|                      | Michael Fay        | <b>670553</b> |
|                      | Martin Webb        | <b>670537</b> |
|                      | Jane Young         | <b>670532</b> |
|                      | Tessa Manser       | <b>670605</b> |

### ALL SAINTS CHURCH Team Rector

Reverend Mark Zammit

01980653953

07733 077957

[zammitparish@yahoo.co.uk](mailto:zammitparish@yahoo.co.uk)

### ENFORD CAMERA CLUB

|                  |                |
|------------------|----------------|
| <b>Chairman</b>  | Martin Webb    |
| <b>Secretary</b> | Pauline Wallis |
| <b>Treasurer</b> | Sue Vergette   |

### NEWSLETTER

|                      |                 |
|----------------------|-----------------|
| <b>Chairman</b>      | Tanya Becker    |
| <b>Vice Chairman</b> | Linda Mundy     |
| <b>Secretary</b>     | Linda Mundy     |
| <b>Treasurer</b>     | Ros Perry       |
| <b>Advertising</b>   | Peggy Waterkeyn |
|                      | Jacqui Elkins   |
|                      | Jane Young      |
|                      | Ann Houghton    |
|                      | Gay Monk        |

### PAROCHIAL CHURCH COUNCIL

|                         |                    |
|-------------------------|--------------------|
| <b>Church Wardens</b>   | John Poole Warren  |
|                         | Henry Middleton    |
| <b>Treasurer</b>        | Jon Gould          |
| <b>Secretary</b>        | Amanda Murray      |
| <b>Council Members:</b> | Michael Hadfield   |
|                         | John Manser        |
|                         | Jonathan Walsh     |
|                         | Judy D'Arcy-Irvine |
|                         | Bruce Carter       |
|                         | Frank Horsford     |
|                         | Sue Poole-Warren   |
|                         | Mary Burdick       |
|                         | Gai Rickett        |

### NETHERAVON SCHOOL

|                              |                 |
|------------------------------|-----------------|
| <b>Chairman of Governors</b> | Fanny Middleton |
| <b>Enford Governor Rep</b>   | Andrew Marx     |
| <b>Head Teacher</b>          | Hayley Humphris |
| <b>Clerk</b>                 | Shona Ford      |

### VILLAGE HALL

### PARISH HALL

|                  |                |
|------------------|----------------|
| <b>Chairman</b>  | Richard Petitt |
| <b>Treasurer</b> | Bruce Carter   |
| <b>Secretary</b> | Gareth Holden  |

|                           |                                |
|---------------------------|--------------------------------|
| <b>Chairman</b>           | Judy D'Arcy-Irvine             |
| <b>Vice Chairman</b>      | Steve Becker                   |
| <b>Treasurer</b>          | Glenda Clark                   |
| <b>Secretary</b>          | Lesley Brown                   |
| <b>Parish Council Rep</b> | Adrian Orr                     |
| <b>Parish Hall Rep</b>    | Jane Young                     |
| <b>Football Club Rep</b>  | Ollie Stagg                    |
| <b>PCC Rep</b>            | Judy D'Arcy-Irvine             |
| <b>Newsletter Rep</b>     | Jacqui Elkins                  |
| <b>Booking Officer</b>    | Judy D'Arcy-Irvine<br>(670501) |

|                         |                        |
|-------------------------|------------------------|
| <b>Property Officer</b> | David Spencer          |
| <b>Grounds Officer</b>  | Hamish Scott Dalgleish |

**OR YOUR DIARY May 2013**

|             |            |  |
|-------------|------------|--|
| <b>1st</b>  | Wed        | <b>MAY DAY</b>   |
| <b>2nd</b>  | Thu        | Black Bin / Circuits, Parish Hall, 7.00pm /Camera Club, Village Hall, 8.00pm                   |
| <b>3rd</b>  | Fri        |  |
| <b>4th</b>  | <b>Sat</b> | Camera Club Salisbury  |
| <b>5th</b>  | <b>Sun</b> | <b>Holy Communion, 9.00am</b>  |
| <b>6th</b>  | Mon        | May Day bank Holiday   |
| <b>7th</b>  | Tue        | Quiz, The Swan, 9.30pm   |
| <b>8th</b>  | Wed        |  |
| <b>9th</b>  | Thu        | Recycling / Circuits, Parish Hall , 7.00pm /Enford Gardening Club, 7.00pm, Enford Village Hall |
| <b>10th</b> | Fri        |  |
| <b>11th</b> | <b>Sat</b> | Amesbury Town Band Spring Concert. 7.30pm, Amesbury Methodist Church                           |
| <b>12th</b> | <b>Sun</b> | <b>United Team Service , Figheledean, 10.30am./</b> Plant and Food Fair, Chippenham            |
| <b>13th</b> | Mon        |  |
| <b>14th</b> | Tue        | Quiz, The Swan, 9.30pm   |
| <b>15th</b> | Wed        |  |
| <b>16th</b> | Thu        | Black Bin / Circuits, Parish Hall, 7.00pm  |
| <b>17th</b> | Fri        |  |
| <b>18th</b> | <b>Sat</b> |  |
| <b>19th</b> | <b>Sun</b> | <b>Family Service, 10.30am</b>   |
| <b>20th</b> | Mon        | Newsletter Meeting, 7.30pm, Coombe Lane  |
| <b>21st</b> | Tue        | Quiz, The Swan, 9.30pm   |
| <b>22nd</b> | Wed        |  |
| <b>23rd</b> | Thu        | Recycling / Circuits, Parish Hall, 7.00pm  |
| <b>24th</b> | Fri        |  |
| <b>25th</b> | <b>Sat</b> |  |
| <b>26th</b> | <b>Sun</b> | <b>Evensong, 6.00pm</b>  |
| <b>27th</b> | Mon        | Spring Holiday   |
| <b>28th</b> | Tue        | Quiz, The Swan, 9.30pm   |
| <b>29th</b> | Wed        |  |
| <b>30th</b> | Thu        | Black Bin / Circuits, Parish Hall, 7.00pm  |
| <b>31st</b> | Fri        |  |