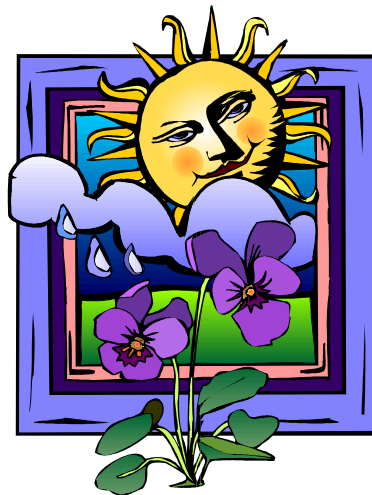


# ENFORD NEWSLETTER



Village Information

April 2010

Church Services

Village Hall Activities  
&  
Clubs

Football Fixtures

Local Services

You can now read the Enford Newsletter in colour at  
**[www.enfordnewsletter.org](http://www.enfordnewsletter.org)**  
In addition you will find interesting articles news,  
colour photographs and past Newsletter plus  
useful information and services

**ENFORD  
NEWSLETTER****CONTENTS**

EPC Minutes/Thank you/Jumble Sale	2
Enford Football Club/Wanted	3
200 Club/Golf Day	4
Messages/Cancer Reserarch/Summer Fete	5
Pilates Class/Health Fair	6
Film Club/Antiques Fair	7
All Saints Enford	8
PCC Thanks/Bus Services	9
Village Hall	10
Project Workshop & Local Policing	11
Youth Club News/Wanted/Pewsey Children's Centre	12
All Saints Pre School/Durrington Link	13
SPTA News	14
Advertising	16
Village Committees	26
April Diary	27

**NEXT COMMITTEE MEETING****Thursday 22nd April**

All items for inclusion, whether they are handwritten, typed or via e-mail, **MUST be submitted by the date of the meeting or they will not be published until the following month.**

These articles may be handed in to any Newsletter Committee member. Please send e-mails to

**tanya@becker.globalnet.co.uk**

Enford Newsletter Committee reserves the right to reject or omit from publication any material that is considered by majority of Committee Members to be detrimental to any person or which is not in the best interest of the community as a whole. All letters and articles must be signed, but the Committee will withhold the name of the writer if this is requested at the time of sending it in.

**ENFORD PARISH COUNCIL MINUTES****DRAFT MINUTES OF THE MEETING  
HELD ON 3RD MARCH 2010**

The **draft** minutes can be found on  
The Newsletter website [www.enfordnewsletter.org](http://www.enfordnewsletter.org)



Thank you to Enford Youth Club for the pretty handmade posies which were distributed to all the ladies attending the Mothering Sunday service at Netheravon Church. They were much appreciated.

Helen Hadfield

*A Poem For April*

"Loveliest of trees, the cherry now  
Is hung with bloom along the bough,  
And stands about the woodland ride  
Wearing white for Eastertide.

Now, of my threescore years and ten,  
Twenty will not come again,  
And take from seventy springs a score,  
It only leaves me fifty more.

And since to look at things in bloom  
Fifty springs are little room,  
About the woodlands I will go  
To see the cherry hung with snow."

- A. E. Housman, *Shropshire Lad*, 1887

**JUMBLE SALE****THANK YOU**

to all of you who helped and supported the Jumble Sale  
held on 13th March in aid of Haiti

**NEXT JUMBLE SALE**

will be in May in aid of The Parish Hall

*(date to be announced in next Newsletter)*

## ENFORD FOOTBALL CLUB

Forthcoming Games:

10th April Home to South Newton and Wishford  
 17th April Home to West Harnham  
 24th April Away to Nomansland  
 1st May Away to Stockton and Codford  
 8th May Away to West Harnham

The Chisenbury and Enford Summer Fete will be on June 26th and the club is running the football tournament again this year. We hope to have the same format as last year with all teams playing at least three games each. However this year we would like to see a team or two entered from the Enford Youth Club. Therefore, when the evenings are a little lighter, there will be some coaching sessions at the Youth Club on Friday nights. We will advise of the date when these sessions will start and initially they will be for all ages to attend. However the tournament itself will have an age restriction, to be decided at a later date.



## GARDENING CLUB UPDATE

**Our next guest speaker will be Alison Parker from Woodborough Garden Centre, who will be coming to talk to us on Thursday 15th April about Companion Gardening. This promises to be an interesting talk, covering a range of topics such as the encouragement of beneficial insects and gardening without chemicals.**

**This is an open meeting for everyone in the community, and anyone who is interested in any aspect of companion gardening is really encouraged to attend.**

**Doors will open at 6:45pm for a 7:15 pm start. Tickets £3.50 each on the door.**

**The Gardening Club meets in the Village Hall 7pm - 8pm, (please note the earlier time), on the third Thursday of the month. The next meeting will be held on Thursday 18th March.**

**Please contact any of the following for details:**

**Fanny Middleton 01980 671645  
 Sandra Lowen [sandra.lowen@googlemail.com](mailto:sandra.lowen@googlemail.com)  
 Gill Gould [the.goulds@lineone.net](mailto:the.goulds@lineone.net)**

**Whatever your level of interest in gardening (from arm-chair to professional) if you would like to come along to this friendly group, you will be made very welcome**

## NEWS FROM THE CAMERA CLUB

We are glad to see that every time we meet there are one or two new faces. Please do come and join us on the first Thursday of every month.

**Members will be adding some of their better photographs of the local area to the Newsletter website so do have a look at that and we are planning to set up our own website as well.**

## BOOK CLUB



The book club meets on the first Wednesday of every month at 7.45 at The Red Lion.

Please come along to enjoy discussing books you have read or to find out about books you might like to read.

Join us over a glass of wine.

Ring Vic on 01980 670928

## WANTED

Do you remember Solomon? Thanks to the generosity of so many people two lorry loads of second hand items have already been sent to Gambia. If you have an old sewing machine, television or bicycle that is no longer used please leave them in my garage. I will then pass them on to Solomon.

Thank you  
 Jane Young

# Enford Football Club 200 Club Draw

## February

£50	64	Dave Smith
£25	156	Christine Gallichan
£15	69	Mike Camille
£10	123	Colin Pearse
£10	161	Alison Roberts
£10	200	Julian Lee

## March

£50	191	Guy Scott-Dalgleish
£25	60	Thomas Nixon
£15	186	Rob Coultard
£10	148	Steve Todd
£10	67	Dave Smith Jnr
£10	131	Nathan Arnold

### ENFORD & CHISENBURY GOLF - 21<sup>st</sup> MAY 2010

The Enford and Chisenbury golf day will be at the Tidworth Golf Course on Friday 21<sup>st</sup> May. Assemble at 12.00pm for a bacon roll or sandwich, followed by the Tee Off at 12.30pm. We are looking for a maximum of 20 players to take part. The intention is for 5 teams of 4 players to play 18 holes stableford. The Prize giving will take place in the Tidworth Club House at the end of play at 5.00pm approx.

Costs The cost for the afternoon golf is £22 (£15 for the green fee, £2.50 for bacon roll or sandwich and £4.50 for prizes). Any money remaining will be donated to the Village Hall and Church. Members of Tidworth Golf Club need not pay the £15 green fee.

Handicap. All play will be off full handicap. Maximum handicap for gentlemen is 30 and 36 for ladies. Please be honest when completing your entry form!

This is a fun day out, so come and join us - **21<sup>st</sup> May at Tidworth**

#### ENTRY FORM

1. Name:..... Phone:.....
2. Handicap:..... If none Gents 30, Ladies 36 and be honest.
3. Entry Fee:..... £22 or £7 if a member of Tidworth.

Please reply by 14 May to either: Adrian Orr or 'PK' Kenny  
 Chapel House Wayside Cottage  
 East Chisenbury Enford  
 Tel: 670447 Tel: 670033  
 a.orr@btinternet.com peterpaulkenny@aol.com



**CANCER RESEARCH UK****STONEHENGE AND PEWSEY VALE BRANCH**

We have now agreed our fundraising programme for the coming year and as promised, there is something to suit all tastes.

**Monday 10th May** is a Coffee Morning at Collingbourne Kingston Village Hall from 10 am to 1 pm. There will be a selection of stalls, so why not meet up with friends to browse and catch up on news.

On **Saturday 26th June** enjoy an evening of Popular Jazz classics with Helen Barratt. This event is being held at the Bouverie Hall in Pewsey.

**Sunday 17th October** sees us once again at The Goa Balti Restaurant in Everleigh for the Curry Lunch, a 'must' in our diary of events .

**On Wednesday 17th November we will once again be holding our annual Christmas Fair at Figheldean Village Hall.**

**Further details of all these events will be in future issues and we will look forward to meeting you again over the course of the year.**



**MESSAGES  
FOR FRIENDS  
AND  
NEIGHBOURS**

**We would like to wish  
a very warm welcome  
to all who have recently moved  
into the Parish of Enford.  
We hope that  
you will find  
many new friends and neighbours**

**SAVE THE DATE**

**SUMMER FETE**  
on  
**ENFORD PLAYING FIELD**

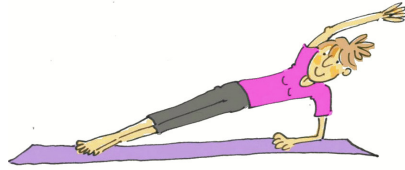
**SATURDAY 26 JUNE 2010****1.00-5.00pm****FREE ENTRY**

Climbing wall, dog show, tug of war, bouncy castles, kids entertainment, kids football competition, beer tent, hot food plus lots more.....

If you are interested in having a stall at the Fete or helping on an activity please contact  
**marycampbell@ukonline.co.uk or call 671 206**

# PILATES CLASSES

At Enford Village Hall



Small classes designed to improve core strength, mobility, flexibility, balance and postural alignment.

New Beginners Class  
Starting Tuesday 20 April 2010  
10.30 - 11.130 am

Also Thursdays 8.30 - 9.30am  
All levels welcome.

please contact Tiggy Martin  
on **07834 183 377**

please contact Nicci Caswell  
on **07960 797 280**



## TIDWORTH COMMUNITY AREA HEALTH FAIR

Find out what is available from the NHS, Wiltshire Council and other organisations

**3.00 – 6.00 pm Wednesday 14 April 2010**  
**Tidworth Leisure Centre, Nadder Road,**  
**Tidworth, SP9 7QN**

**Who's exhibiting?** NHS Wiltshire, Wiltshire Council, Leisure Centres, health charities, Wiltshire Fire & Rescue Service, Wiltshire Police, recreational clubs and many others...

**What's on offer?** Screening, advice, information, techniques, support – health care, home safety, NHS services, Council support, carer support, access to voluntary services and lots more...

If you would like to promote your group at the fair please get in touch

For more information contact:  
Val Powley, Community Area Manager  
Tel: 01722 434217 or 712487  
Email: [val.powley@wiltshire.gov.uk](mailto:val.powley@wiltshire.gov.uk)



## ENFORD VILLAGE HALL FILM CLUB

In Association with  
WILTSHIRE MOVIOLA Presents



**Tuesday 27<sup>th</sup> April**  
**“Up In The Air”**

**BAFTA for Best Adapted Screenplay!**

Romantic Comedy Drama starring George Clooney “Delivering his killer one-liners with a gently raised eyebrow, Clooney impresses at every turn and is fast becoming one of Hollywood’s subtlest comedy actors”

**Tuesday 25<sup>th</sup> May**  
**“Invictus”**

Directed by Clint Eastwood, the story of Nelson Mandela’s transformation of the South African rugby team into one that represents the nation.  
Starring Morgan Freeman and Matt Damon.



**Tuesday 22<sup>nd</sup> June**  
**“A Single Man”**

Oscar Nominated and BAFTA Award Winner Colin Firth stars in a drama set in Los Angeles based on a novel by Christopher Isherwood

**Tuesday 27<sup>th</sup> July**  
**“It’s Complicated”**

Romantic Comedy starring Meryl Streep, Alec Baldwin and Steve Martin

**Tickets £5.00 each booked in advance and £6.00 on the night**  
**To book tickets and for more information contact 01980 670501 or**  
**email: [enfordvillagehall@btinternet.com](mailto:enfordvillagehall@btinternet.com)**

**Doors open 7.00 p.m**  
**Film Starts at 7.30 p.m.**  
**Refreshments available**

If you would like to be included in our email contact list for all Enford Village Hall events, including the film nights, please contact 01980 670501 or email [enfordvillagehall@btinternet.com](mailto:enfordvillagehall@btinternet.com)

## ANTIQUES & COLLECTORS FAIR

**Old Postcards  
of  
Enford Village Hall**

**SUNDAY 9TH MAY**  
**ENFORD VILLAGE HALL**  
**10.00AM—4.00PM**

**Please Support  
Your Village Hall**

**FREE ADMISSION**

The Vicarage  
Netheravon  
01980 670326

**ALL SAINTS ENFORD CHURCH**



Dear Friends,

On the 4<sup>th</sup> of April we shall celebrate the great Feast Day of Easter.

We will have noticed new life all around us – Brimstone, Tortoiseshell and Peacock butterflies on the wing – some have been hibernating throughout the winter, others, for example the Painted Lady, have been blown up from North Africa. What a mystery they are – from a small clutch of eggs to a caterpillar to a chrysalis and then into the most beautiful of butterflies coming through the darkness into the light of a new life.

The story of Easter reminds us of the miracle of new life because Jesus was not dead but risen from the tomb.

During the week running up to Easter (Holy Week), we have followed Jesus’ entry into Jerusalem on Palm Sunday, through the growing tension of his encounters with various people in authority, as well as the illumination of his encounters with his followers. We’ve thought a lot about how we are continually being invited to let old ways die so that new life can come.

Everything led up to the Cross on Good Friday, that very dark and scary place. And now the glorious day of the resurrection comes to us again with the same message.

“If you have been raised with Christ, seek the things that are above, where Christ is, seated at the right hand of God. Set your minds on the things that are above, not on things that are on earth.” *Colossians 3<sup>1-2</sup>*

May you have a glorious Easter and be richly blessed.

Colin Fox

**AN EASTER PRAYER**

Oh Living Lord God, open our eyes that we may recognize you walking with us. Open our ears and our minds that we may hear and understand; open our hearts that your love may flow through us and bring the blessing of new life to all we meet, for you are the God that makes all things new.

Amen



**CHURCH SERVICES**

**April**

**May**

1st	19.00	Maundy Thursday (Supper & HC)	2nd	09.00	Holy Communion
4th	09.00	Holy Communion (Easter Sunday)	9th	10.30	Benefice Service Netheravon
11th	10.30	Benefice Service, Netheravon (Enford to host)	16th	10.30	Family Communion
18th	10.30	Family Communion	23rd	18.00	Evensong
25th	18.00	Evensong	30th		No Service at Enford

**CHURCH CLEANING ROTA**

**April**

**May**

2nd	Gai Rickett & Lowenna Harbottle (Good Friday)	7th	Amanda Marx & Paula Chalus
9th	Spring Clean 10 am—Volunteers Welcome!	13th	Tessa Manser
16th	Lyn Rich & Fanny Middleton	20th	Gai Rickett & Lowenna Harbottle
23rd	Helen Hadfield & Jill Mitchell	27th	Lyn Rich & Fanny Middleton
30th	Sue Poole-Warren & Hilary Horsford		

**ALL SAINTS ENFORD CHURCH (cont)**



**Special Services for Lent and Holy Week**

- Thursday 1<sup>st</sup> April 7.00 pm Special Service to commemorate the Last Supper with a simple meal at Enford
- Friday 2<sup>nd</sup> April 9.00 am Breakfast and Family Service at Figheldean  
12 noon Reflective Music and 2.00 pm Last Hour at Durrington
- Saturday 3<sup>rd</sup> April 7.00 pm Service of Light at Netheravon  
9.00 pm – 5.00 am All night vigil at Durrington



In Enford on Thursday 1<sup>st</sup> April (Maundy Thursday) at 7.00 pm there will be a commemoration of the Last Supper in church. There will be a simple meal within Holy Communion including hymns. All welcome (although numbers would be helpful!)



**All Saints' Church, Enford**

The Annual General Meeting was held on 25<sup>th</sup> February 2010 in the Church at 6pm.

The Churchwardens and Members of the PCC would like to thank the following people in particular for all their help and support during the last year:

Margaret Webb for all her work as Electoral Roll Officer; the bell-ringers for all their efforts and to Alan Cook for leading the bell-ringers and regularly winding the clock; Michael Fay and the other organists; Frank Horsford and Bob Hastie for maintaining the fabric of the church and to their team of helpers including Jonathan Walsh, Richard Pettitt, Raymond Hatchman and Darryl Woodruff for keeping the churchyard in such a pleasing state and Richard Pettitt for putting out the dustbin; Ann Merrett and the Flower Guild for arranging the flowers and decorating the church beautifully; The Church Cleaning Guild for keeping the Church spotless; Alan Merrett for auditing the accounts; Gareth Holden and Mary Campbell for the organisation of the Summer Fete which benefitted the church; Gai Rickett and David and Lowenna Harbottle for their kindness in enabling the church to be open during the day; Mary Burdick for her dedicated help with children at the Family Services; the sidesmen and readers; and to everyone who has made 2009 a busy and enjoyable year for Enford Church.

Particular thanks are due to Michael Hadfield who is standing down after eight years of service as Churchwarden during which time he has provided wise counsel, friendship, endless energy and commitment with strong support from his wife, Helen. The PCC are also indebted to Sue Poole-Warren for her eight years as Secretary of the PCC – providing her time, great support and assistance in running the many various events. Henry Middleton takes over as Churchwarden and Amanda Murray takes over as PCC Secretary.

**SERVICE 210 ENFORD TO DEVIZES THURSDAYS AND SATURDAYS**

**BUS SERVICES**



**OUT**

Enford Bus Shelter	09:31
Enford Corner	09:34
East Chisenbury	09:38
Upavon Avon Square	09:42
Upavon, Ship Inn	09:45
Devizes Market Place	10:24

**RETURN**

Devizes Market Place	12:30
Upavon, Ship Inn	13:07
Upavon Avon Square	1310
East Chisenbury	13:13
Enford Corner	13:17
Enford Bus Shelter	13:18

# VILLAGE HALL & RECREATION GROUND

## PRIVATE PARTIES

Planning a Children's Party or celebrating a special Birthday or an Anniversary? The new hall is the perfect venue for weddings and parties!

## ENFORD FOOTBALL CLUB

is planning to introduce  
Junior Football

Contact Ollie Stagg  
01980 670634

for further information and to join in!

## FILM NIGHT

'UP IN THE AIR'

Tuesday 27th April

## ANTIQUES FAIR

(revised date)  
Sunday 9th May

## YOUTH CLUB

We would love to hear from anyone who is interested and who can commit to a Friday evening once a month, weekly or fortnightly

Contact Katrina Knight 01980 670492



## CHISENBURY & ENFORD SUMMER FETE

SATURDAY 26TH JUNE



Day	Activity	Time	Contact
Tuesday	Pilates 2 Classes	9.15am - 10.15am 10.30am - 11.30am	Tiggy Martin 01980 670438 tiggymartin@tiscali.co.uk
Tuesday	Enford Film Club Moviola	4th Tuesday in the month Doors open 7.00 p.m	Judy D'Arcy-Irvine 01980 670501 enfordvillagehall@btinternet.com
Tuesday	Bridge Club	Every other Tuesday 10.45-12.45	Jeni Scott-Dalglish 01980670210 jscottdalglish@aol.com
Wednesday	Keep Fit	6.15 p.m – 7.15 p.m	Helen Gould-Cooper 01980 670324 h.gouldcooper@virgin.net
Wednesday	Short Mat Bowls	7.30 p.m. – 10.00 p.m.	David Spencer 01980 670526 spencersgb@yahoo.co.uk
Thursday	Pilates	8.30 a.m. – 9.30 a.m.	Nicci Caswell 01980 625245 Work niccicaswell@btopenworld.com
Thursday	Camera Club	8.00 p.m. – 9.00 p.m. 1 <sup>st</sup> Thursday in the month	Martin Webb 01980 670537 webb14@btinternet.com
Thursday	Gardening Club	8.00 p.m. – 9.00 p.m 3 <sup>rd</sup> Thursday in the month	Gill Gould 01980 671462 the.goulds@lineone.net
Friday	Youth Club	6.00 p.m. – 9.00 p.m.	Katrina Knight 01980 670492
Saturday	Enford Football Club	Recreation Ground	Ollie Stagg 01980 670634
Sunday	Red Lion Football Club	Recreation Ground	Alastair Gammie c/o Red Lion



# PROJECT WORKSHOPS 2010

## Open Studios & Summer Exhibition

### Saturday 8<sup>th</sup> May & Sunday 9<sup>th</sup> May 10am – 5pm

*In aid of Alzheimer's*

Grand Opening of fabulous new studio buildings and 'Granary gallery'  
 12 Open Artists Studios ~ Full Programme of Demonstrations ~  
 over 40 Visiting Artists ~ Sculpture Exhibition in the Courtyard Garden ~  
 Homemade refreshments ~ Special exhibition by Artists in Test Valley

**Entry ~ £5.00** (under 16's free)

**'ITALIAN' GALA EVENING & PRIVATE VIEW ~ Friday 7<sup>th</sup> May 6pm – 9pm**

Musical interludes by 'HATSTAND OPERA'  
 Italian wine tasting with CAVISTE and Mediterranean canapés  
 Display of Classic FERRARI cars by Wessex Ferrari G

roup  
**Auction of artwork donated by exhibitors (all proceeds in aid of Alzheimer's)**

Admission £15.00 ~ strictly by pre-booked ticket Tel: 01264 889889  
 For further details and booking form ~ [www.project-workshop.co.uk](http://www.project-workshop.co.uk)

**Location – just off the A303 opposite Thruxton race circuit**  
 Lains Farm, Quarley, Andover, Hampshire, SP11 8PX

## LOCAL POLICING

There has been another incident of parents leaving home overnight, and returning to find that their teenage child has allowed her friends to stay. On this occasion she invited 5 guests, who then let in 20 more youths, many unknown to their host. She tried to get them to leave, and eventually succeeded. Next morning the daughter of the house found that the front door was unlocked and £1,000 worth of electrical games, phones and music players had been stolen. It is appreciated that children grow up, and there must come a time when they will house-sit for their parents, but you need to set ground rules the first time it happens, including what to do if....., and one of those ifs should include calling the police when things get out of hand. My own experiences as a parent are limited to returning to find the only indication that something had occurred was to find vomit in the vacuum cleaner.

Local crimes have included thefts of heating oil from both Enford and Netheravon.

Michael Bayliss  
 Police Constable 1250

Maria Downham  
 PCSO 6078

Philippa Royston  
 PCSO 6235

0845 408 7000 Extension 744 817  
 Ludgershall and Rural: [ludgershallruralnpt@wiltshire.pnn.police.uk](mailto:ludgershallruralnpt@wiltshire.pnn.police.uk)

## ENFORD YOUTH CLUB

Just a few lines to let you know how the Youth Club is progressing.

Due to bad weather we reopened on 22nd January. Since then we have had a few busy weeks. They have been doing arty things such as painting, drawing and making flowers for The Mothers' Day service. Well done, kids!

They have also been fabric painting onto T shirts. They all look really good.

We are going to make a flower and vegetable garden with space from The Village Hall and Gardening Club. If there are any keen gardeners, young or old who would like to help, contact me Katrina Knight 01908 670492 or Bruce 01980 670006. If you have any plant donations we would be most grateful.

The lighter nights are coming so if there is anyone who would like to help out on a Friday night, please do come along from 6pm. The kids and helpers are really great.

By the time you read this we will have had our Easter Bingo. I would like to say a very big thank you to Marg for driving me to do all the Easter shopping and to everyone who helped me on the day. I would also like to thank Coralie for doing the raffle and to those of you who donated the prizes and cakes.



## News from Pewsey Children's Centre

Pewsey Children's Centre's new programme of activities is now up and running and includes a monthly visit to the Phoenix Hall, Netheravon for Friday Fundays – we are next there on Friday, 16<sup>th</sup> April and will be joined by the local librarian. Come along for story time and activities. Pewsey Toy Library will no longer be holding sessions in Netheravon but toys can still be borrowed from our new catalogue, reserved and collected either from our office in Pewsey or from a Children's Centre activity (such as Friday Funday). Other activities in the area include a Love Food, Hate Waste Morning during the Easter holidays on Tuesday 13<sup>th</sup> April in Rushall Village Hall, from 10.30-12.30 - come along for pizza and smoothie making, recipe ideas, art activities and freebies! Look out for our new Sensory Play sessions running in Pewsey Scout Hall - the next one is on Thursday 8<sup>th</sup> April from 11.30-12.30. These are designed for babies and young children and their parents/carers and explore the five senses through play.

Sticky Fingers are regular arty sessions for under 5s and their grown ups and run alternate Monday afternoons in Pewsey – bring your children for a fun and messy time!

To find out more about any of these activities, or the Children's Centre in general please ring the Children's Centre on (01672) 564140 or call into the Information Shop in Pewsey village centre.



A SureStart Children's Centre

**For more details on anything mentioned here, please contact  
Pewsey Children's Centre on (01672) 564140.**



## Avon Small Saints Pre-School

All Saints Primary School, High St. Netheravon

**Registered to provide day care for 2-5 year olds**

**Morning Sessions • Lunch Club • Afternoon Sessions**

For more information, please ring Elka (supervisor) on:

01980 671681 [www.avonsmallsaints.co.uk](http://www.avonsmallsaints.co.uk)

Ofsted Reg. No. EY338057 Reg. Charity No. 1033639

## DURRINGTON & DISTRICT LINK SCHEME



This is a voluntary 'good neighbour' scheme which covers several villages in the Avon valley providing help to those in need in various ways.

For example:

transporting people to hospital and other appointments, shopping and social visits. If we take you to an appointment we will take care of you throughout the journey and will return you back to your home. No matter how long we have to wait for you.

Practical help carrying out small house or garden jobs, walking a dog or feeding a cat.

Calling in for a chat and providing company or perhaps accompanying someone on a walk.

We do not charge for any of these services, we just ask for a donation if you can afford it. The Durrington & District group has expanded recently but we would still welcome volunteers who may wish to provide assistance as outlined above. There are no set requirements, we can fit in with the time you have available; you do not even have to be a driver as there are non driving jobs by which you can provide a valuable contribution. If however you are able to use your own vehicle you will receive a mileage allowance for any tasks that you carry out on our behalf

If you would like to find out more about LINK or wish to volunteer to help us, please telephone us on 01980 594857 or call our Chairman on 01980 670748



**SALISBURY PLAIN TRAINING AREA  
NEWS SHEET  
April 2010**



MINISTRY OF DEFENCE

This forecast shows our planned training. Unfortunately operational requirements mean that dates and times can change. The warning flags and signs show the actual range danger areas on a given day. Late night firing times Tues, Thurs and Sat March to October 2330hrs and November to February 2100hrs inclusive.

Any general comment about military training should normally be made through Parish Councils to the Liaison Officer nominated by the appropriate Garrison Headquarters. Any specific complaint should be made in writing or if urgent by telephone as shown below:

**HEADQUARTERS SALISBURY PLAIN TRAINING AREA  
Westdown Camp, Tilshead, Salisbury, Wiltshire SP3 4RS  
Telephone: Stonehenge (01980) - 620819**

**TRAINING:** After a very busy couple of months, April will be relatively quiet with the Easter stand down in the first week or so. Cadets will be conducting their Easter Camps and several local units are taking the opportunity to catch up with their basic training. 4 Scots deploy during the last 2 weeks on their Ex Druid's Dance which will see 700 soldiers exercising across most of the Plain.

**ARTILLERY LIVE FIRING FROM SALISBURY PLAIN (WEST) : NIL**

**LATE FIRING DAYS ON SALISBURY PLAIN (WEST) : NIL**

**ANTI TANK- FIRING DAYS ON SALIBURY PLAIN (WEST) : NIL**

**ARTILLERY FIRING FROM WITHIN THE TILSHEAD,  
CHITTERNE AND SHREWTON TRIANGLE : NIL**

**ARTILLERY FIRING FROM SALISBURY PLAIN (EAST) : NIL**

**LATE FIRING FROM SALISBURY PLAIN (EAST) : NIL**

**LATE FIRING DAYS LARKHILL/WESTDOWN RANGES : 1, 6, 8, 10, 13, 15, 17, 20, 22, 27, 29**

**NON FIRING DAYS ON LARKHILL/WESTDOWN DANGER AREA : 2, 3, 4, 5, 11, 17, 18, 24, 25**

**NON FIRING DAYS ON BULFORD RANGES : 2, 3, 4, 5, 17, 18, 24, 25**

**NON FIRING DAYS ON WARMINSTER RANGES 2, 3, 4, 5, 10, 11, 24, 25**

**NOTE:** Due to unforeseen changes there is always a possibility that there could be firing on other of the days listed. This is particularly so now operational training is being conducted to meet many and varied exigencies. The public should be careful to check that Red Flags are not flying before they enter the range. It is the time of the year when we change late night firing times. From March through to October the Tue, Thurs and Sat night firing times will revert back to 2330hrs.



**HELICOPTER NIGHT FLYING : :** Night flying normally takes place Mondays to Thursdays inclusive over parts of SPTA. Some aircraft will show no lights but all will operate under strict area control.

**AIR ACTIVITIES :** Dates and timings given below are those listed at the time of printing but may be altered due to aircraft serviceability or weather conditions.

**AIRCRAFT TRIALS:**

Aircraft may conduct trials over Larkhill Range on each Wed and Fri from 1200 - 1700 hrs which could involve circuits to the East crossing the Avon Valley.

**PARACHUTING.** : Parachute dropping is scheduled to take place on **EVERLEIGH** and **FOX COVERT DZ** during normal working hours on most weekdays. Outside working hours and at weekends the dates and approximate times are:

**FOX COVERT DZ (130)**

9th - 1800 - 2000  
10th - 0900 - 1200  
19th - 1800 - 2000

**IMBER DZ (C130)**

NIL Notified

**PARACHUTING**



**EVERLEIGH DZ (C130)**

1st - 1800 - 2000  
6th - 2200 - 07/0100  
12th - 1800 - 2359  
13th - 2000 - 2359  
14th - 2000 - 15/0100  
16th - 1700 - 1900  
20th - 1900 - 2359  
21st - 1900 - 22/0100  
22nd - 2100 - 2300  
26th - 1800 - 2300  
27th - 2200 - 2300  
28th - 2100 - 2200  
29th - 2200 - 30/0100

**STRIP LANDINGS**

**DEPTFORD DOWN (C130)**

20th - 2200 - 2359  
21st - 2200 - 2359  
26th - 1600 - 1800

**UPAVON (C130)**

**NIL NOTIFIED**

**FAST JET ACTIVITY (FGA)**

**SPTA W**  
NIL NOTIFIED

**SPTA E**  
NIL NOTIFIED

27th - 30th SPTA ALL AREAS (EXERCISE SHARK)  
TIMES NOT KNOWN YET

**SPTA C**  
12th - 16th  
TIMES NOT YET KNOWN

**ROADS THROUGH IMBER RANGES  
(AND IMBER VILLAGE)  
EASTER 2010**



Due to the high density of pre-operational deployment training taking place over the Easter period the roads through Imber Ranges (and Imber Village) will NOT be open to the public.

**VALEDICTORY**

I signed my first Newsletter in September 1997; this will be my last one prior to retiring on 1st April 2010. I wish to use this means to proffer my thanks to all the past and present Parish Chairmen, Town Clerks and Tenant Farmers for their support, patience and friendliness whilst we have been engaged in the inevitable mutual challenges that occur living adjacent to the plain. I trust that the predominant quietness that currently pervades the plain will continue to give you pleasure.

*Nigel de Foubert*

**PLAINWATCH NUMBER 01980 674700**

**PLAINWATCH is specifically designed to rapidly identify suspicious activity on the Plain: firstly and principally to identify criminal activity but secondly to deter such activity.**

We seek the support of those Parishioners who regularly use the Plain for recreational purposes, who when doing so spot what could be termed suspicious or even criminal activity taking place. No approach or contact should be made with potential offenders. If such an opportunity occurs we would be pleased to hear from you via a special telephone number which we have set up within our 24 hour Operations Cell: **01980 674700**. We would welcome your assistance in making the Plain more secure and a safe place to enjoy.

**POLICE WARNING**

THIEVES OPERATE ON THE TRAINING AREA  
SECURE YOUR VEHICLES AND EQUIPMENT AT **ALL** TIMES

# Advertising

Wags  
2  
Whiskers  
Pet Care Services

*Putting All Your Pet's Needs*

**DOG WALKING**      **HOME SITTING**

**PET TAXI**      **PET SITTING**

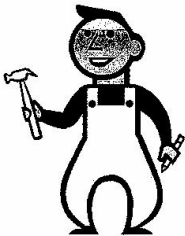
**ALL DAY ADVENTURE**

*FULLY INSURED*      *FRIENDLY RELIABLE SERVICE*

Tel: 01980 670261

Mob: 07969 284913

Email: [wags2whiskers@live.co.uk](mailto:wags2whiskers@live.co.uk)



## MIKE TAYLOR

### CARPENTER

ROOFING

KITCHEN FITTING

CERAMIC TILING

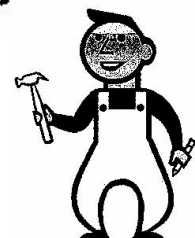
GENERAL BUILDING

PATIOS

FENCING

ENQUIRIES WELCOME with regard to all aspects of construction and maintenance

Please ring 01980 670969 or 07543834684



# *Carpet Clean*

*Ricky Flint*

*Est. 1997*

**Friendly local service**

**Professional work at sensible prices**

Call for no obligation quote

**Mobile: 07799 215837 / Tel: 01672 871414**

# **D Taylor**

**Building Services**

**Bricklayer & General Builder**

**All Building Works undertaken  
Including Extensions, Garden Walls, Patios,  
Roof Repairs, Plastering  
Floor & Wall Tiling etc**

**01980 671078  
Mobile No: 07719916854**

# CARPET & UPHOLSTERY CLEANERS

## The Famous "Clean Living" Working in Enford, for You.

*"It's blue, it's blue!"*



**Absolutely  
Brilliant.  
Absolutely  
Local!!**

For your **free**, no obligation quote call: **01980 621621**

enquiries@cleanlivingmcc.com  
www.itsblue-itsblue.com

- ✓ Carpets, rugs, leather and upholstery cleaned
- ✓ **NEW!** Outdoor pressure washing – call Steve for details
- ✓ The **BEST** local and reputable company, Guaranteed
- ✓ Devotion to over **4000** local clients
- ✓ Excellent results **EVERY** time
- ✓ **FREE** home quotes and surveys. Call Steve at Clean Living on:  
**01980 621621**

# CLEAN LIVING

SPECIALISING IN DELIGHTED CLIENTS

Winner of the Commitment to the Community  
Business Excellence Award 2010

**For just a few pounds you can place  
an advertisement  
in the Enford Newsletter.**

**£20 per 1/8 for 10 issues**

**£45 per 1/3 page for 10 issues**

**Please contact Peggy Waterkeyn  
01980 670418**

## iT SOLUTIONS

Tel: 07867 988140  
[www.ManageIT.info](http://www.ManageIT.info)

Your local computer and internet experts friendly, professional & affordable advice for home & small business users

*Do you need help with ...*

Internet, Broadband & Wireless connection problems?

Database management?

Linking various computers together?

Converting to / from Mac?

Tailor-made systems?

Just getting your computer to do what you want it to?

**Help is at hand – just telephone now!**

## Salisbury Garden Machinery



For all your garden machinery needs.

Sales-Service-Repair-Hire

22 Newton Rd, Churchfields, Salisbury. SP27QA.

[www.salisburygardenmachinery.co.uk](http://www.salisburygardenmachinery.co.uk) 01722 322414

## ***M NASH & P WILKINS***

***ALL LANDSCAPING WORK UNDERTAKEN  
FENCING\*PATIOS\*PATHS\*PONDS\*  
BRICKWORK  
HEDGE CUTTING\*GARDEN CLEARANCE  
GRASS CUTTING***

***Tel: MIKE 01380 840767  
Mobile: 07977 950654***

***Tel: PAUL 01380 840763  
Mobile: 07970 557002***

## **CAN I HELP?**

### **CONSERVATORY CLEANING, WINDOW CLEANING AND GENERAL MAINTENANCE**

Has your conservatory lost its new shiny look, windows impossible to clean then, **CAN I HELP could be the solution**

As well as normal window cleaning service, other things undertaken include painting and decorating, brickwork and carpentry.

In fact any task in the home and garden.

Man and Van service also available.

All work is guaranteed.

For a free quote and written estimate if requested contact

**Contact Peter 07875 238730**

*MODERN & TRADITIONALLY  
DESIGNED MEMORIALS*

### **M J SLY**

*Monumental Stonemason*

*New Memorials, Additional Inscriptions  
Restorations, Free Home Visits  
Free Brochure*

*Marlborough (01672) 516797*

*Email: martin@mjsly.co.uk*

*Website: www.mjsly.co.uk*

*Workshop & Showroom at Pelham Court,  
London Road,  
Marlborough, Wiltshire*

### **ELSTON VETERINARY CLINIC**

*ELSTON LANE, SHREWTON*

*Dr. Enid Frantilla, DVM MRCVS*

*Small Animal Medicine and Surgery*

*Providing high quality pet healthcare  
and a caring, friendly professional service  
HELPING YOU TO HELP YOUR PETS!!*

*Consultations by appointment, Mon-Sat*

*For appointments or enquiries, and  
**24 HOUR EMERGENCY SERVICE***

**01980 621999**

## **ROD SMITH**

***The Garage  
Netheravon***

***UNIPART CAR CARE CENTRE***

***MOT Tests***

***Car Repairs & Servicing***

***Now able to service air conditioning units***

***Batteries, Exhausts & Tyres  
at Competitive Prices***

***Handy Gas***

***Tel: Stonehenge (01980) 670348***

## **AGRICENTRE**

*Now stocking Frontline for cats and dogs  
at an unrivalled price  
Excellent products at an excellent price from  
well-known horse wormers  
Electrical fencing  
Complete range of Briswim pool chemicals*

***FREE HOME DELIVERY!***

***Contact: Justin Young, A.M.T.R.A., SQP  
(Branch Manger)***

**07850 184111**

**01722 320316**

# Yoga, Pilates & Nia classes

Mon	10.00am	Pilates	Rushall Village Hall
Mon	11.15am	Yoga	Rushall Village Hall
Tues	7.30pm	Yoga	Upavon Village Hall
Weds	9.30am	Yoga	Rushall Village Hall
Thurs	9.30am	Nia	Rushall Village Hall

**Nia** is a dance based fitness programme which promotes strength, stamina, flexibility, stress reduction, co-ordination, weight loss and much more. Nia is a free spirited and fun way to get fit. This is a drop-in class (£5) and is suitable for all levels of fitness.

**Yoga and Pilates** classes are booked on a termly basis. All classes, including Nia run during Wiltshire Schools term times.

Visit [www.fulcrumyoga.co.uk](http://www.fulcrumyoga.co.uk) or email [debby@fulcrumyoga.co.uk](mailto:debby@fulcrumyoga.co.uk) or call Debby Wilkinson on 07505 142285 for further details.

Debby is a British Wheel of Yoga teacher and a course tutor for the British Wheel of Yoga teacher training programme. She also qualified with the Pilates Institute and is a Nia White Belt teacher.

## Avon Security

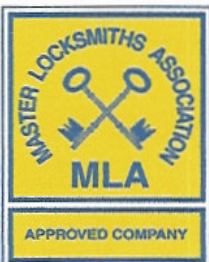
MASTER LOCKSMITHS

### Engraving Service Now Available

- > Brass
- > Plastics
- > Aluminium
- > Glass
- > Trophies
- > Gifts

### Free Advice & Quotations On Securing Your Property & Belongings

- Key Cutting
- Locks Supplied & Fitted
- Access Control
- Safes
- PVCu Locks
- Master Key Systems
- Lock Repairs
- Door Furniture & Ironmongery
- Transponder Car Keys
- Keys To Code
- Watch Batteries & Straps
- Emergency Call Out Service



**01980 626000**

21, Salisbury Street, Amesbury, Wiltshire, SP4 7AW

**www.avonsecurity.net**





**Comfy Critters**  
Pet Care Services

**Cat & Dog Grooming Salon**

at: Nursery Farm Woodborough  
(Next to Woodborough Garden Centre)

Tel for an appointment on:  
07754 614096    [www.comfycritters.co.uk](http://www.comfycritters.co.uk)

**G. B. Chamberlain**  
Flooring Specialist

Specialising in Ceramic  
Floors and Walls

Tel: 07971 182752  
24 hour answer service

**OIL FIRED  
BOILERS**

*For prompt reliable –  
SERVICING  
REPAIRS  
COMMISSIONING*

**Call Tim Walsh**

Tel. 01980 652803  
Mobile 07919603884

**FRED MONRO**

**Contemporary Interiors**

Bespoke carpentry  
Made-to-measure kitchens  
and furniture  
Affordable prices  
Free quotations

Call: 07717 416423  
Email: [fred@fredmonro.co.uk](mailto:fred@fredmonro.co.uk)  
[www.fredmonro.co.uk](http://www.fredmonro.co.uk)

**GALAXY  
DISCOTHEQUES**

- Professional DJ Host Compere
- Disco's
- Video Disco's
- Karaoke Show's

Disco Entertainment for all occasions  
(Enford Based)

07050 164071  
[professionaldj@btinternet.com](mailto:professionaldj@btinternet.com)  
[www.niagraentertainments.co.uk](http://www.niagraentertainments.co.uk)



**B REPAIRED**  
Musical Instrument Repairers

Graham & Yvonne Ballard  
The Music Studio 8 Thurlow Close  
Amesbury Nr. Salisbury  
Wiltshire SP47QG

01980 625380  
07957 806401/2

[www.brepaired.co.uk](http://www.brepaired.co.uk)



## WILTON CARPETS

### Jon Card

Your local contact for   • Great Carpets  
Your area                   • Great Choice  
                                     • Great Prices

Full Measuring , Estimating  
& Guaranteed Fitting

e-mail ; [joncard@wiltoncarpets.com](mailto:joncard@wiltoncarpets.com)

Tel ; 01722 742733

### TIM BUCKLAND BOILER MAINTENANCE

FOR SERVICE AND BREAKDOWNS

*Friendly and efficient service  
Wide stock of boiler spares in stock*

**VERY COMPETITIVE PRICES**

*Also AGAs and RAYBURNS serviced*

**Tel: 01980 625846**

### CAROL G DAYTON

ITEC MGPP IHHHT T.A.Th

*Massage Therapist  
Indian Head Massage  
Reflexology  
Skenar Therapy  
Reiki  
Hopi Ear Candles  
Injury Treatment  
Waxing and Sugaring*

*For further information please call:*

**01980 653151  
or 07787 513563**

## M.W. WALSH



### TREE SERVICES

All aspects of tree surgery and hedge maintenance professionally undertaken

**HIGH QUALITY WORK**

**FULLY INSURED**

**PERSONAL SERVICE**

**FREE ESTIMATES**

**01980 670032**

• NO VAT •

*Whether it's a dazzling new colour, new textured or classic haircut, Louise and Stacie look forward to helping you achieve your stunning new look. Come along for your free consultation.*

*Appointments not always required.*

### Tina's Hairdressers

High Street, Netheravon

**Open** – Tuesday 9-5.30, Wednesday 9-2,  
Thursday 1-7, Friday 9-6, Saturday 9.00-2

**Closed** – Sunday and Monday

**Tel: 01980 670628**

*New Range of Jewellery and Bags For Sale*

### RGV ENGINEERING (NETHERAVON) Ltd

HIGH STREET

NETHERAVON

01980 670667

Local family business  
established over 30 years

**SPECIALISTS IN PLUMBING,  
HEATING AND ELECTRICAL  
BOILER SERVICE AND  
COMMISSIONING**

**GAS SAFE \* OFTEC \* NICEIC \* ECA**



**Avon Valley Chauffeur Service**

- ❖ Airports & stations
- ❖ Hotels & restaurants
- ❖ Schools & colleges
- ❖ Business appointments
- ❖ Hospitals & doctors
- ❖ Special occasions



[avc@avonvalleychauffeurs.co.uk](mailto:avc@avonvalleychauffeurs.co.uk)

**01980 630094**

**Redmayne-Bentley Stockbrokers**



*Your friend on the Stock Exchange*

To discuss how we can help, please contact either Hugh Lancaster or Gerald Lowes  
**Telephone: 01488 686400**

**Email: [Hungerford@redmayne.co.uk](mailto:Hungerford@redmayne.co.uk)**

**Visit: [www.redmayne.co.uk/hungerford](http://www.redmayne.co.uk/hungerford)**



2003-2007: BEST ADVISORY BROKER

VAT No: GB 613 139 763. Members of the London Stock Exchange  
 Authorised and Regulated by the Financial Services Authority

**WORRIED ABOUT INLAND REVENUE SELF-ASSESSMENT?**

*Why not talk to a commercially-experienced Chartered Accountant? Local help is at hand.*

**MERPEN ACCOUNTING**

*Accountancy & Small Business Advisory Management*

*\*Hands-on help \*No job too small \*Even part-time, money-making hobbies \*Initial discussions free of charge \*Further work done professionally for probably the lowest fees around*

*Alan Merrett FCA*

*Eagle Lodge, East Chisenbury, Pewsey, SN9 6AQ*

**Tel: 01980 671441**

**[www.pewsey-uk.co.uk/merpen-accounting.html](http://www.pewsey-uk.co.uk/merpen-accounting.html)**



**OIL TANKS**



**OIL TANK SUPPLY AND INSTALLATION SPECIALISTS**



- COMPETITIVE PRICES
- DOMESTIC & COMMERCIAL
- FULL REPLACEMENT SERVICE
- FRIENDLY & RELIABLE
- FREE QUOTATIONS

**TELEPHONE 01985 248 555**

[www.tankservices.co.uk](http://www.tankservices.co.uk) Deptford Farm, Wytje, Wiltshire, BA12 0QQ

**SUCOL Solutions**



- Home PC Tuition and Setup
- Home Network Setup
- Data Storage and Backup
- Small Business Server (SBS)
- PC and Server Repairs
- Network Infrastructure
- Design and Installation
- CAT5e Cabling
- IT Consultancy

**Colin**

22 Willow Drive  
 Durrington  
 Salisbury  
 Wiltshire  
 SP4 8DE

Tel: 01980 594368  
 Mob: 07989 261778  
 Email:  
[colin.mundy@ntlworld.com](mailto:colin.mundy@ntlworld.com)

**Bits & Pieces** (Durrington

***BUILDING, GARDENING & PETS, PANELS, AGGRE-***

**37 - 39 Bulford Road, Durrington**

**Tel: 01980 655552**

**Proprietors: P & M Conn**

**GRAHAM BUCKLAND SERVICES**

*General building maintenance: plumbing,  
Carpentry, glazing, brickwork, etc  
Free quotes and reasonable rates*

*'Man with a Van' hire.  
Removals and House Clearance  
Undertaken*

**Tel: 01980 670870  
or 07831 889 666**

# Cape Cuisine

**ONLY THE BEST HOME-COOKED FOOD**

*Weddings, Anniversaries, Parties.  
Hot or Cold Buffets*

**For Quotations**

01980 590808



## PEST CONTROL SERVICE

*RABBITS, RATS, MOLES  
WASPS, SQUIRRELS  
BIRD PROOFING*

*CALL NIGEL*

**01980 670804  
07854 828904**

## GDB TECHNICAL SERVICES LIMITED

**Computer/IT support  
Small business and Home users**

Networking issues/installations  
PC Problems  
Tuition  
General IT advice/help  
Upgrades  
Data Recovery  
Service Support Options

**Call 01980 623052 or visit  
[www.gdbts.com](http://www.gdbts.com) to see if we can help.**

## GRAHAM C BROWN & SON

**Oil boiler maintenance**

**A well-established, friendly, local  
company, operating within the  
Salisbury Plain area.**

**01980 622737**

# DJ Landscaping

**No Job Too Big Or Small  
Just call us we do it all**

- Lawn Mowing
- General Tidying
- Hedge Cutting
- Turfing
- Fencing
- Ponds
- Paths
- Brick Works
- Leaf Collection
- Pruning
- Weeding
- Decking
- Patios
- Pergolas
- Driveways

Free estimates, Hourly Rates  
Regular appointments are available

**Call the company you can trust**

Tel: 01980 846740

Mob: 07717 831907

**For just a few pounds you can place  
an advertisement  
in the Enford Newsletter.**

**£20 per 1/8 page for 10 issues  
£45 per 1/3 page for 10 issues**

**Please contact Peggy Waterkeyn 01980 670418**

## **MOBILE HAIRDRESSER**

**Ring Donna**

**on**

**07711 579403**

## **KD WORSDELL**

**Carpentry & Joinery  
Building Works & Maintenance**

**Please Call**

**01980 630545**

**Or**

**07759 586162**

## VILLAGE COMMITTEES

## PARISH COUNCIL

<b>Chairman</b>	Ken Monk	670540
<b>Vice Chairman</b>	Tessa Manser	670605
<b>Parish Clerk</b>	Bill Vergette	670132
<b>Councillors</b>	Stan Bagwell	670154
	Norman Beardsley	670860
	Michael Fay	670553
	Martin Webb	670537
	Jane Young	670532
	Adrian Orr	670447
	Bruce Carter	671708

## PARISH HALL

<b>Chairman</b>	Colin Pearse
<b>Vice Chairman</b>	Jacqui Elkins
<b>Treasurer</b>	Margaret Young
<b>Secretary</b>	Katrina Knight

## FOOTBALL CLUB

<b>Chairman</b>	Julian Le
<b>Secretary</b>	Julian Lee
<b>Treasurer</b>	Ollie Stagg
<b>1<sup>st</sup> Team Manager</b>	Julian Lee
<b>2<sup>nd</sup> Team Manager</b>	Ian Lawes

## PAROCHIAL CHURCH COUNCIL

<b>Church Wardens</b>	John Poole Warren Henry Middleton
<b>Treasurer</b>	Alan Merrett
<b>Secretary</b>	Amanda Murray
<b>Council Members:</b>	Michael Hadfield Jonathan Walsh Judy D'Arcy-Irvine Bruce Carter Frank Horsford John Manser Sue Poole-Warren

## VILLAGE HALL

<b>Chairman</b>	Judy D'Arcy-Irvine
<b>Vice Chairman</b>	
<b>Treasurer</b>	Glenda Clark
<b>Secretary</b>	
<b>Parish Council Rep</b>	Ann Merrett
<b>Parish Hall Rep</b>	Jane Young
<b>Football Club Rep</b>	Ollie Stagg
<b>PPC Rep</b>	
<b>Newsletter Rep</b>	Jacqui Elkins
<b>Booking Officer</b>	Judy D'Arcy-Irvine (670501)
<b>Property Officer</b>	David Spencer

## NEWSLETTER COMMITTEE

<b>Chairman</b>	Tanya Becker
<b>Vice Chairman</b>	Linda Mundy
<b>Secretary</b>	Linda Mundy
<b>Treasurer</b>	Linda Mundy
<b>Advertising</b>	Peggy Waterkeyn
<b>Village Hall Rep</b>	Jacqui Elkins
<b>PC Rep</b>	Jane Young Ann Houghton Gay Monk Ros Perry

## SCHOOL GOVERNORS

<b>Chairman</b>	Colin Cruikshanks
<b>Clerk</b>	Sally Jones
<b>Enford Rep</b>	Andrew Marx

## THE VICAR

Rev Colin Fox  
The Vicarage,  
Netheravon  
**01980 670326**

## ENFORD CAMERA CLUB

<b>Chairman</b>	Martin Webb
<b>Secretary</b>	Jeni Scott Dalgleish
<b>Treasurer</b>	Sue Vergette

## NEIGHBOURHOOD WATCH COORDINATORS

**Area Co-ordinator** - Steve Becker

<b>Coombe Lane East (30-45)</b>	Jo Crossland	<b>East Chisenbury (North)</b>	Stephen Calton
<b>Coombe Lane West (1-17)</b>		<b>East Chisenbury (Central)</b>	Vicky Orr
<b>&amp; Fifield</b>	Angie Taylor	<b>East Chisenbury (South)</b>	Barry Chamberlain
<b>Coombe</b>	Terry Mundy	<b>Enford North &amp; Littlecott)</b>	Not Filled
	Ednah Beardsley	<b>Grants Road (North) (14-29)</b>	Ian Teasdale
	Peggy Waterkeyn	<b>Paddocks Close</b>	Colin Pearse
	Not Filled	<b>Water Lane (East)</b>	
<b>New Town</b>	Venessa Murray Hill	<b>(East from Field View)</b>	Lyn Riche
<b>Enford South (LongStreet)</b>		<b>Water Lane (West) (1-10)</b>	John Powell
<b>Enford Central</b>		<b>Grant's Road (South)</b>	
<b>(Enford Hill &amp; Hill Farm Road)</b>		<b>(1-13, 30-33)</b>	Not Filled
<b>New Buildings</b>	Stan Bagwell		
<b>Compton</b>	Bruce & Lucy Waight		
<b>West Chisenbury</b>	Derek Ford		
	Rod Mason		

**FOR YOUR DIARY April 2010**

1st	Thursday	Maundy Thursday, Supper & Holy Communion , 7.00pm, Enford / Recycling
2nd	Friday	Good Friday
3rd	Saturday	Easter Saturday
4th	Sunday	Easter Sunday, Holy Communion, 9.00am
5th	Monday	
6th	Tuesday	Quiz, 9.30pm, The Swan
7th	Wednesday	Book Club, 7.45, Red Lion
8th	Thursday	Black Bin
9th	Friday	
10th	Saturday	EFC Enford v South Newton & Wishford ( Home)
11th	Sunday	Benefice Service, 10.30am, Netheravon, (Enford to Host)
12th	Monday	
13th	Tuesday	Quiz, 9.30pm, The Swan
14th	Wednesday	Health Fair, 3.00pm—6.00pm, Tidworth Leisure Centte
15th	Thursday	Companion Gardening Talk (Gardening Club) 7.15pm, Village Hall / Recycling
16th	Friday	Friday Funday, Phoenix Hall, Netheravon
17th	Saturday	EFC Enford v West Harnham ( Home )
18th	Sunday	Family Communion,10.30am
19th	Monday	
20th	Tuesday	Quiz, 9.30pm, The Swan
21st	Wednesday	
22nd	Thursday	Newsletter Meeting, 7.30pm, Coombe Lane / Black Bin
23rd	Friday	
24th	Saturday	EFC Enford v Nomansland (Away )
25th	Sunday	Evensong, 6.00pm
26th	Monday	
27th	Tuesday	Film Night, Up in The Air, Enford Village Hall , 7.30pm / Quiz, 9.30pm / The Swan
28th	Wednesday	
29th	Thursday	Recycling
30th	Friday	