



ENFORD NEWSLETTER



Village Information



Advertising

Church Services

Football Fixtures

Village Hall Activities
&
Clubs



November 2009



You can now read the Enford Newsletter in colour
at

www.enfordnewsletter.org

In addition you will find interesting articles news,
colour photographs and past Newsletters
plus
useful information and services

CONTENTS

ENFORD NEWSLETTER

Newsletter Website/Enford FC Fixtures/Youth Club Jumble Sales/What's On at The Village Hall	1
Enford Church Christmas Fair	2
Village Hall News	3
Children's Christmas Party/ For Sale	4
Enford & Chisenbury Ladies Christmas Dinner	5
Film Nights/St Francis School Christmas Fair	6
Cancer Research Christmas Fair/Thank you/ Jumble Sale Youth Club Christmas Bingo/Pewsey Children's Centre	7
All Saints Church/Church Services	8
Public Rights of Way/Plain Walking	9
Highways News/Poem	10
Village Hall Activities/Upavon Good Companions	12
Rushall School/Durrington & District Link Scheme	13
Netheravon Christmas Fair/For Sale/Cookery Demonstration	14
Messages	15
SPTA News	16
Community Link/Bus Services	18
Advertising	19
Village Committees	29
November Diary	30



DATE OF NEXT COMMITTEE MEETING & DEADLINE



Wednesday 18th November

All items for inclusion, whether they are handwritten, typed or via e-mail, ***MUST be submitted by the date of the meeting or they will not be published until the following month.*** These articles may be handed in to any Newsletter Committee member. Please send e-mails to **tanya@becker.globalnet.co.uk**

Enford Newsletter Committee reserves the right to reject or omit from publication any material that is considered by majority of Committee Members to be detrimental to any person or which is not in the best interest of the community as a whole. All letters and articles must be signed, but the Committee will withhold the name of the writer if this is requested at the time of sending it in.



Don't forget you can read the colour version of the Newsletter at www.enfordnewsletter.org. You will also find a list of local services and telephone numbers.

Enford Football Club



Fixtures for the month of November are as follows:

14/11/09	Enford v West Harnham
21/11/09	Enford v RGV Netheravon
28/11/09	Enford v Porton Sports



All the above games will be played at Enford with a 14:30hrs kick off. Saturday 17th October saw the team return to play in Enford for the first time in five years following the construction of the new village hall. The team's first home game ended in a 3-0 win against South Newton and Wishford in the Charity A Cup, with two goals from Kezman Malcolm and one from Aaron Thorpe.

Enford FC would like to take this opportunity to thank the Enford and Chisenbury Fete Committee for their kind donation towards the purchase of the new goal posts and nets.

Enford and Avon Valley Youth Club

are proud to announce that they have been awarded the Phoenix Trophy from

Wiltshire Council

The Phoenix Trophy

will be presented

to the Leaders and the Young People of Enford

By

Mr Robert Floyd, High Sheriff of Wiltshire

on

Friday November 20th 2009 at 7pm

Well done to all those involved in the Youth Club!

Funds raised from the recently held Parish Hall Jumble Sale which were to have gone towards the cost of running of the Ladies Darts Team were in fact used on this occasion to provide respite for a local family. A jumble sale will be held in the New Year from which the proceeds will indeed go to the Ladies Darts Team.

WHAT'S ON AT THE VILLAGE HALL

Tue 24th November 7.30 pm

Sun 6th December 10.00 am - 5.00 pm

Sat 19th December 3.00 pm - 5.00pm

Film Night "Cheri". Drinks available

Antiques Fair

Children's Christmas Party

*THE
ENFORD CHURCH
CHRISTMAS FAIR
SATURDAY 21ST
NOVEMBER 2009
IN THE CHURCH
DOORS OPEN AT 2 PM*



BOOKS



TEA AND CAKES



CAKES



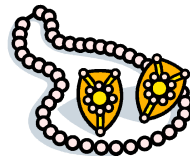
Bottle
Stall



Raffl
e



PLANTS



CHRISTMAS TOMBOLA
AND
CRAFT & JEWELLERY
STALL



SOFT TOYS



*AND THERE WILL BE PLENTY MORE
STALLS TO CHOOSE FROM
WHY NOT COME & JOIN US*



REFRESHMENTS AVAILABLE

PLEASE!!

*Enford Church Christmas Fair
All Saints' Church, Enford*

PLEASE!!

Saturday 21st November at 2pm

If anyone has any **Bric-a-Brac** that they would like to give to the Church Christmas Fair on the 21st November, please would they give it to Susie Winter (01980 670936) before **Wednesday 18th November**.

Village Hall News



New Exercise Class
at Enford Village Hall
from Wed 9 Sept
Wednesday 6.15-7.15pm

UPPER & LOWER BODY BLITZ

No Aerobics! Lots of effective toning for upper & lower body. Optional use of light handweights & bands. Suitable for all ages & abilities

£2.80 per class

For further information please call
Helen on 01980 670324

**ENFORD
SHORT MAT
BOWLS CLUB**

Every Wednesday at 7.30pm
At
The Village Hall

Cost £3.00 per evening

New Players Welcome

Gardening Club - October update

The second meeting of the Gardening Club was held on Thursday 15th October and saw attendance soar! It was a convivial evening all round, and seemed to pass very quickly!

We all introduced ourselves and briefly described what each of us wanted from the club. The most common request was for people to come and give a talk, or visit us for a question and answer session; both concerning a wide range of topics, for example successful gardening on chalk soil; roses; beekeeping; vegetable gardening and lots more. Several of us went away with actions to approach contacts, or people we know who may be interested in coming to visit and talk to us; we will be working on a schedule of events for next year which will be advertised and will be open to everyone to attend - we'll aim to finalise it soon and hopefully publish in the December newsletter.

There was a desire to have a 'what to do in the garden this month' session at each meeting, with a problem-solving/question and answer session plus a plant/seed/garden items swap .



It was agreed that the charge for each meeting from next month will be £2, to cover hall hire and refreshments with the balance to provide the start to Gardening Club funds.



Several people have already made some generous donations and pledges of plants and cuttings for the landscaping of the village hall, which are really appreciated, thank you. In addition, if anyone is likely to have any surplus spring bulbs from planting we would willingly accept them. And we're still looking for the use of a rotovator for a first-time vegetable gardener.

Whatever your level of interest in gardening (from armchair to professional); if you would like to come along to this friendly group, you will be made very welcome. **The Gardening Club meets in the Village Hall 8pm - 9pm, on the third Thursday of the month. Next meeting Thursday 19th November. Contact: Gill Gould 01980 671462 the.goulds@lineone.net**

**Enford Camera
Club**

**Meets once a month
in the
The Village Hall**

YOUTH CLUB

6.00pm – 9.00 pm
on
Friday evenings

**Contact Katrina Knight
01980 670492**



children's christmas party

FREE

DATE: SAT 19TH DECEMBER
TIME: 3 PM TO 5 PM
WHERE: ENFORD VILLAGE HALL
WHO FOR: YOUR CHILDREN
AGED 0 - 11YEARS



**A party for village children
 with puppet show, afternoon tea
 and a special guest appearance**

(guess who??!!)



**Please register your child's name and age
 with Katie on 01980 670573.**

hope you can make it!

Paid for by the Enford Community Fund

SINGLE 3' FT BED

**Double divan with drawers, As new, hardly used
 Quite high might suit teenager or older person
 Comfortable mattress (medium/firm)**

**Free to good home but I would ask that
 a small donation is made to 'Help for Heroes'**

**Tel: Mrs Plumb 671401
 Field View
 Enford**



PLAINWATCH

**PLAINWATCH is specifically designed
 to rapidly identify suspicious activity
 on the Plain: firstly and principally to
 identify criminal activity but
 secondly to deter such activity.**

**SPECIAL CONTACT NUMBER
 01980 674700**





IT'S THAT TIME OF YEAR AGAIN LADIES!!!

ENFORD AND CHISENBURY

Ladies' Christmas Dinner

This year the gathering will be at The Swan Inn and will take place on the evening
Of

Thursday 10th Dec 2009

at 7.00 pm

If you would like to attend please fill in the form below and return it to either

Gill Gould, Lower Farm House, Enford, 01980 671462 email gill.goulds@lineone.net

or

thegoulds@lineone.net

Margaret Webb, Longacre, Enford, 01980 670537 email mandm.webb@tesco.net

mandm.webb@tesco.net

COST £19.25 (£5.00 deposit paid in advance £14.25 paid on the day)

Name _____ Phone Number _____

Address _____

Please include a deposit of £5.00 per person and return your form by the 1st Dec 2009

On arrival Mulled wine or Orange Juice, Pepsi or Apple Juice

Main Courses

Wild mushroom, leek and dumpling casserole flavored with Rosemary

Roast Turkey with Cranberry Stuffing, Chipolata Wrapped in Smoked Bacon

North Atlantic Haddock fillet baked in a cream mature cheddar sauce served over fresh wilted spinach

Puddings

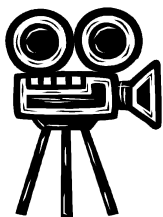
Brandied Christmas pudding with Double Cream

Bramley Apple Crumble with Amaretti Crunch topping & Custard

Tropical fruit salad of figs, pineapple, kiwi, satuma, and grapes

This is a special menu, both in price and content, created for
The Ladies Dinner and does not reflect the full menu of The Swan Inn

BOOK EARLY. LIMITED SPACE AVAILABLE



NOVEMBER FILM NIGHT ENFORD VILLAGE HALL FILM CLUB



In Association with
WILTSHIRE MOVIOLA Presents

“CHERI”

Elegant, witty period romantic comedy starring Michelle Pfeiffer, Kathy Bates and Rupert Friend.

Screenplay by Christopher Hampton from the classic by Colette.

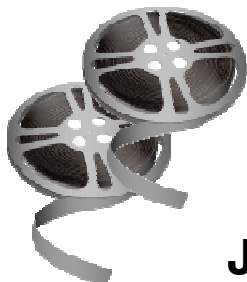
Tuesday 24th November

Enford New Village Hall

Doors open 7.00 p.m

Refreshments available

Tickets £5.00 each booked in advance and £6.00 on the night
To book tickets and for more information contact 01980 670501 or
e-mail: enfordvillagehall@btinternet.com



TITLES OF THE FILMS FOR JANUARY, FEBRUARY AND MARCH WILL BE ANNOUNCED IN THE NEXT NEWSLETTER !

If you would like to be included in our e-mail contact list for all Enford Village Hall events, including the film nights, please contact 01980 670501 or e-mail enfordvillagehall@btinternet.com

CHRISTMAS GIFT FAIR 12TH NOVEMBER 2009

9.30AM – 4.30PM

ST FRANCIS SCHOOL,

PEWSEY, WILTSHIRE SN9 5NT

CHRISTMAS PRESENTS FOR ALL THE FAMILY

ALL WELCOME.

ENTRANCE £2.50

IN AID OF WILTSHIRE AIR AMBULANCE AND SCHOOL PTA



Together we will beat cancer



CANCER RESEARCH UK



11th CHRISTMAS FAIR

The Stonehenge and Pewsey Vale Branch of Cancer Research UK is holding its 11th Christmas Fair at Figheldean Village Hall on Wednesday 18th November 2009 from 10 am to 3 pm. This is a wonderful opportunity to purchase unique gifts in time for Christmas, whilst supporting essential research into fighting Cancer. There will be a variety of stalls, with a selection of gifts for ladies, gentlemen and children and light refreshments will also be available. The entrance fee is £2.50, which goes directly to Cancer Research UK.



A BUNCH OF THANK YOUS FROM STAN

& PAULINE BAGWELL



A big Thank You
to the organisers of
The Lady Loves Jazz Evening
at the Village Hall on 25th Sept 2009.

Thank You to Wayne Meadows
of New Buildings for the traffic
equipment for New Buildings Lane.

Well done in getting the Football Pitch ready
so Enford.F.C. can now play on their home
ground again. So come on Enford give them
some support, make a visit to the Village Hall
on a Saturday home game and see a real
game of football. You never know you might
enjoy it, and its FREE to watch, with loads of
fresh air.

JUMBLE SALE

Saturday 21st November
Enford Parish Hall

In aid of
Children in Need

20p entrance fee

ENFORD & VALLEY YOUTH CLUB

CHRISTMAS BINGO

Sunday 29th November

3.00pm – 5.00pm

Enford Village Hall

News from Pewsey Children's Centre



A SureStart Children's Centre

Did you know Pewsey Children's Centre holds a monthly programme of activities in the Phoenix Hall, Netheravon? Come along to a Movement to Music Session on Monday, 16th November and to a Christmas Party on Monday, 14th December from 10.30 -12.00 – these are aimed at children aged 0-5 and their parents or carers. Pewsey Children's Centre are also running new Make & Take sessions in November – come along on Fridays 6th, 13th, 20th and 27th November from 10.00 -11.30 in the Phoenix Hall for fun art and craft activities.

Pewsey Area Toy Library also visits the Phoenix Hall, Netheravon – we are next there on Tuesday 17th November from 11.00 until 1.00. Come along and see the range of toys to hire.

Other activities in the area include a Rhymetime at Pewsey Library on Friday 6th November from 9.45am and an Early Bird Christmas Fayre at Milton Lilbourne Village Hall on Saturday 14th November from 10.30-12.00.

For more information about anything mentioned here, or the Children's Centre in general, please contact (01672) 564140

ALL SAINTS ENFORD CHURCH

Dear Friends,

Autumn and Winter weddings are growing more popular and I am glad to say that requests by couples to get married in church are more frequent; at least in this valley.

It was the young priest's first wedding and he was anxious to conduct it without a hitch. Everyone could see he was very nervous but somehow he was managing very well for a while. Then came the words,

'If anyone, therefore, can show any just cause why they may not be joyfully loined (instead of lawfully joined) together....' Hearing no protests the young priest forged ahead to the exchanging of rings with growing confidence but the wedding guests in the pews nearly lost it when he said, 'Now place the fing on her ringer'.

Marriage and relationships are a serious matter. It was Dietrich Banhoeffer sitting in a Nazi prison cell writing some thoughts to his niece who was about to be married said 'Marriage is more that your love for each other. It has a higher dignity and power for it is God's holy ordnance through which he wills to perpetuate the human race until the end of time. In your love you see only yourselves but in marriage you are the link in the chain of generations. In your love you see the heaven of your happiness but in marriage you are placed at a post of responsibility towards the society and community in which you live. Your love is a private possession but marriage is more than something personal; it is a status; it is an office.

So may all who have been recently married and those planning to be married this winter be blessed.

With good wishes
Colin Fox

A PRAYER FOR MARRIAGE

O God, whose nature is love, we thank you for that love which unites men and women; that bond that can last as life itself.

We pray for all who make promises to each other that every joy may be theirs and we pray also for all whose relationships have met with adversity.

Through Jesus Christ our Lord

Amen



CHURCH SERVICES

November			December		
1 st Nov	09.00	Holy Communion	6 th Dec	09.00	Holy Communion
8th Nov	09.00	Remembrance Day Holy Communion	13 th Dec	10.30	Benefice Service Netheravon
15 th Nov	1030	Family Communion	20th Dec	1030	Carol Service
22 nd Nov	1800	Evensong	22 nd Dec	1600	Crib Service
29th Nov	1800	Advent Carol Service	24th Dec	2330	Midnight Mass Holy Communion
			25th	1030	Christmas Day Service, Netheravon and Bulford

CHURCH CLEANING ROTA

November		October	
6 th Nov	Amanda Marx & Paula de Chalus	4 th Dec	Helen Hadfield & Jill Mitchell
13 th Nov	Tessa Manser	11 Dec	Sue Poole – Warren & Hilary Horsford
20 th Nov	Gai Rickett & Lowenna Harbottle	18 Dec	Amanda Marx & Paula de Chalus
27 th Nov	Lyn Rich & Fanny Middleton		

PUBLIC RIGHTS OF WAY

At long last and thank to some help from our Wiltshire Councillor, Mr Charles Howard, we have again managed to get Enford Bridleway No 1 cleared for suitable use. Public Rights of Way are clearly marked on Ordnance Survey maps. This particular one begins from its junction with the C32 Road at East Chisenbury and leads in a north-easterly direction to join footpath No 43 and eventually the A342 near Upavon. En route this PROW crosses a number of other tracks which can be used to access other areas of the SPTA eastern area.

Comment has been made that this particular PROW had become overgrown because walkers/riders were using the adjacent field rather than the designated PROW. Now that it has been cleared please use it, as by doing so you will be assisting in the quest to keep it open.

However, having just used a few words in an attempt to encourage Parishioners to use and enjoy this facility, I would draw your attention to the fact that the grassed and gravelled area around Chisenbury Flats at the southern end of the bridleway is privately owned by the residents. Therefore there are no parking facilities in this area. Arrangements have been made for a number of 'Way Markers' to be collected from Wiltshire Council, which when received, I will install as necessary.

There are a number of PROWs in the area which are suffering from a distinct lack of maintenance. I therefore welcome any feedback/information relating to the general condition of any Public Right of Way, good or bad, but particularly those with overgrown weeds and hedges, obstructions, signage, broken stiles etc. and I will attempt to get the problem rectified.

We have made a start. Let's keep the momentum going and get our PROW network fit for purpose. It doesn't matter if the path number isn't known; a location will suffice. Photographs would be an excellent bonus. The more information I can gather the better.

Enjoy the freedom of your area and the fresh air

Norman Beardsley
Enford PC PROW Rep
01908 670860



'PLAIN WALKING'



Inaugural meeting of the 'Plain Walking' group

A small but enthusiastic group of walkers met at the Village Hall at 9am, Sun 11 Oct. The weather was overcast but mild and, thankfully, dry. We walked and talked for a little over two and a half hours, covering around 8 miles and arriving back at the Village Hall at 11.35am.

If you would like to join the next walk then meet at the Village Hall at 9am, Sun 22 Nov. A map of the walk is on the Newsletter website at <http://www.enfordnewsletter.org/walking.php>

Steve Becker

Hello Enford Parish Residents,

The A345 Road Surface Conditions from Enford through to Netheravon.

This is still ongoing and has been for some time. Ken Monk, Norman Beardsley and myself have been involved in attending the first two trial Area Board Meetings at Pewsey and also the first of the full Area Board meetings at Pewsey/Tidworth and Amesbury. The poor rural road surface maintenance came up at all of these meetings and was debated vigorously. It was clear that everyone agreed that there was a past lack of investment and a starvation of funds for the repairs of Wiltshire's rural road surface maintenance yearly programmes. At the first Tidworth Area Board meeting a Wiltshire Council Cabinet Member agreed that Wiltshire's rural road surfaces were in an appalling condition. At the last Pewsey Area Board meeting at Great Bedwyn it was stated that there were no more extra funds available for this programme and it would be back to "Pot Hole" patch and mend as per the previous years. This goes against the promises that were made in the run up to Unitary Council Elections. We will pursue this vigorously until the promises that were made at the last Council Elections are kept, the A345 road surface is reinstated to a good road safety condition and in the long term it is fully maintained to the required standards.

The A345. West Chisenbury and Newtown Request for a Speed Reduction.

We are still pursuing this request for a speed reduction and are awaiting the Council's response to the Government's directive for this review, which is due to be released before the end of this year. (Note it was held up due to Unitary Council Elections) No surprise there. I would think we will see this review in the New Year and not before, I just hope they prove me wrong.

Speeding and Enforcement.

Again this has been debated over and over again at past meetings. At the Police Presentation given at the last Area Board Meeting of Pewsey at Great Bedwyn, nothing new came out and we were no further forward regarding the reinstatement of the Traffic Police back to full staffing levels to combat Speeding and Bad Driving Behaviour on the Highways. We were told that, should there be a problem of vehicles seen speeding, the first port of call is the Local Community Beat Manager. I am sure you all have your own opinions of this and also of this new way of dealing with speeding on our local rural roads.

Enford Community Speed Watch.

On August the 20th of this year we had carried out the scheme for a full year. In this time we have carried out 27 watches and logged 195 vehicles for speeding through the 30mph gateway zone here at Enford. On the 21st October 2009 another training session will take place at Enford Parish Hall. Enford has 4 new volunteers and Upavon and Rushall will be attending this training session for their own Community Speed Watch Teams. The police aim to roll out this scheme across Wiltshire. We were told at the last Pewsey Area Board Meeting that the Council were going to invest funding for more speed cameras as the Parishes will support this initiative. Prior to this point there were rumblings that the Parishes would have to fully fund this scheme.

The Swan Accident.

This incident is still ongoing, even though the police feel that this is a closed case. We are still awaiting a copy of the "Stopping Officers Report". There have been quite a few letters from Chief Superintendents to acting Inspectors and full Inspectors etc on this issue and they obviously want to draw a line under this very expensive insurance claim. The last letter from Chief Superintendent Kirby, went so far as to say that this incident had been discussed before at the meetings of the Pewsey Community Partnership and that the police had explained all and therefore the case was closed. He went on further to say that "ONLY" the owners of the Swan were privy to this "Stopping Officers Report". Swan Enford Ltd has never had a copy of this report, and further more the Chief Superintendent was ill informed of the fact that the shareholders of Enford Village own this establishment and all have a right to see this report. To this effect Swan Enford Ltd have replied to the Chief Superintendent requesting a copy of this report.

The point of all this is that several highway laws were broken. Firstly their "Hit and Run" and also "Leaving The Scene of An Accident Without Stopping" to see if anyone was injured and also giving their details, driving without due care and attention, then careless driving etc. A point here - the cost of the Swan accident, which was £20,000.00 worth of damage together with writing off two vehicles and bringing the ancient swan sign down. The Swan's insurance had to cough up for all of the damages including the damage to the offending vehicle plus VAT. The penalties of the 1988 road traffic act for this type of situation, if prosecuted and convicted, could face up to 6 months imprisonment, which shows the seriousness of this incident. The driver who caused the swan accident and wrote off two legally parked vehicles was allowed to go on his way after being stopped by the police at Durrington (A345) with part of the Swan sign structure sticking out of the top of

his vehicle. He was allowed to go on his way by the Stopping Officer "After Giving a Reasonable Excuse for Leaving the Scene of An Accident. I for one would like to know what is a reasonable excuse for leaving a scene of such devastation and also for not checking if anyone was injured in the two vehicles that finished up with the heavy Oak Beam that had crushed the roof of both these two parked vehicles? When we have at hand a copy of the "Stopping Officers Report" then and only then will we decide to draw a line under this costly situation where innocent people had to count the cost.

Coombe/Enford/East Chisenbury. Traffic Calming.

With regard to the meeting that took place on the 8th August 2008, where it was decided by officers of W.C.C that certain measures could be achieved if the Parish Council could part fund the measures, it has been a long haul with silence from the Council up to now. Things are eventually starting to move. A meeting is due to take place on 22nd Oct 2009 with Wiltshire Councillor Charles Howard and Enford Parish Council regarding what was promised by the Council on the 8th Aug. We will keep you informed of the progress.

Road Signage.

We are still pursuing this situation regarding Water Lane/and Enford Hill. Wiltshire Council are quoting an old archaic law of decades ago called "Built Up Roads". We will endeavour to get the extra signs required to stop motorists entering these roads and thinking that they are in an unrestricted zone.

Upavon Bridge Repairs.

This is still ongoing and obviously has affected the C32. We are still keeping an eye on this and have direct contact with the person responsible at Wiltshire Council Trowbridge.

Local Rural Roads and Lanes.

I have had many complaints about drivers speed along the C32 at Enford Village and East Chisenbury, in Water Lane and Grants Road and Enford Hill together with the A345 at Enford. All of these areas are 30mph. A 5mph sign has been erected in the un-adopted small lane at New Buildings but in all these areas drivers still ignore these obvious "EYE VIEW" signs. I must say that in our Community Speed Watch observations some local drivers are not adverse to putting their foot down. A long time ago a campaign was run of "Take Your Foot Off the Gas Pedal and You Will Save Money".

Please observe the speed limit zones and remember that there are children and senior people around and also cyclists and horse riders. Those who choose to gas it, might save some money and in the process might save themselves a costly accident.

Safe Motoring to All and do have a Merry Christmas and Happy New Year.

**Stan. W. A. Bagwell. Enford Parish Council (Highways).
Chair. Transport and Road Safety Sub Group. P.C.A.P.
19/10/09**

They Have Gone Now

Whispers play amongst the last flowers of summer
Searching for their place of birth
Their long tendrils drift on the warm breeze
Lingering hopefully, resting only briefly.
Forms in the earth where young soldiers lay
Sleep quietly, guarding memories,
Disappointments, hopes and dreams
Cradled forever, never forgotten

The old dairy stands alone at the top of the hill
A welcome place of refuge
Echoes hide shyly in dark corners and in high rafters
Waiting patiently, waiting quietly to be heard
Should a being wander through this empty space
They will reach out tenderly so as not offend,
They will seep into and around the body and soul
Leaving behind only a memory of their creation

In the dry windswept soil, a footprint lies so silent
Its maker long gone to an unknown future
Here in this single mark, in this one place
Is captured forever the essence of a precious life
One moment from the certainty of birth
On a journey to that last breath in this wondrous world
All that was.....faint murmurings of what is to come
Will remain here, unaltered, everlasting



Welcome to
ENFORD VILLAGE HALL & RECREATION GROUND
Registered Charity No 305512
Contact e-mail address: enfordvillagehall@btinternet.com
Contact Telephone Number: 01980 670501

Day	Activity	Time	Contact
Tuesday	Pilates	9:15am – 10:15am	Tiggy Martin 01980 670438 tiggymartin@tiscali.co.uk
Tuesday	Bridge Club with Nemmy Elliott	10.45 am- 12.45pm	Jeni Scott Dalgleish 01980 670210 Jscottdalgleish@aol.com
Tuesday	Enford Film Club Moviola	3 rd Tuesday in the month	Judy D'Arcy-Irvine 019670501 enfordvillagehall@btinternet.co
Wednesday	Keep Fit	6.15pm – 7.15pm	Helen Gould-Cooper 01980 670324 h.gouldcooper@virgin.net
Wednesday	Short Mat Bowls	7.30pm – 10.00pm	David Spencer 01980 670526 spencersgb@yahoo.co.uk
Thursday	Pilates	8:30am – 9:30am	Nicci Caswell 01980 625245(work) niccicaswell@btopenworld.com
Thursday	Camera Club	8.00pm – 9.00pm (1 st Thursday in month from Sept)	Martin Webb 01980 670537 webb14@btinternet.com
Thursday	Gardening Club	8.00pm – 9.00pm (3 rd Thursday monthly)	Gill Gould 01980 671462 the.goulds@lineone.net
Friday	Youth Club	6:00pm – 9pm	Katrina Knight 01980 670492
Saturday	Enford Football Club	Recreation Ground	Ollie Stagg 01980 670634
Sunday	Red Lion Football Club	Recreation Ground	Alistair Gammie c/o Red Lion

Youth Club. We would love to hear from anyone who is interested and who can commit to a Friday evening once a month, fortnightly or once a week. Please contact Katrina Knight 670492.

Enford Football Club is planning to introduce **Junior Football** Please contact Ollie Stagg 670634 for further information and to join in!

Private Parties Whether celebrating an anniversary, a special birthday, planning a wedding reception or children's party, the new hall is a perfect venue!

Dates for the Diary!

Film Night "Cheri" Tuesday 24th November 7.30 p.m.
Antiques Fair Sunday 6th December 10.00 a.m to 5.00 p.m.
Children's Party Saturday 19th December 2.00 p.m. – 6.00 p.m.

UPAVON GOOD COMPANIONS

Anyone over 50 is welcome to join the Upavon Good Companions
The last outing is on Tuesday 10th November to Poole

**Non-members are welcome to come on the outings
to help fill the coach**

For further details please telephone
630436 (Noel)



News from Rushall School October 2009

The children are now fully settled into the new building and enjoying having such lovely facilities within which to work and learn.

Our oldest children are learning about the history of the local area and are due to visit Stonehenge to undertake an archaeological skills development day. Those in years three and four are learning all about the Victorian era and will be going to visit Sevington School dressed as Victorian school children – we will see how well they get on with schooling as in 1890!!! The two Key Stage one classes are learning all about clothes and the materials from which they are made. These children will be visiting the factory where the Remembrance Poppies are made in order that they will learn about the meaning of Remembrance Sunday.

The whole school is learning some French and so we are planning a themed day where children can enjoy a French breakfast and parents can come along to a PTFA French evening. Every child from Reception to year 6 receives lessons in French on a weekly basis and often teachers will call the register in French so that the children are confident in using their vocabulary regularly daily. We have been amazed at just how much French and Spanish our children have learned since we introduced Modern Foreign Languages two years ago-many are now confident enough to hold a simple conversation!

We now have 4 small classes with a teacher and full time teaching assistant in each so each child has plenty of adult attention to support their learning and to get to know them as individuals. Our family ethos remains a key feature of the school and one which so many parents and visitors favourably comment upon.

If you would like to visit the school with a view to your child joining us please contact the school office (01980 630360). We would be very happy to welcome you and answer any questions you may have about the school or the process of gaining a school place here at Rushall.

Marion Harvey
Headteacher

DURRINGTON & DISTRICT LINK SCHEME



This is a voluntary 'good neighbour' scheme which covers several villages in the Avon valley providing help to those in need in various ways.

For example:

transporting people to hospital and other appointments, shopping and social visits. If we take you to an appointment we will take care of you throughout the journey and will return you back to your home. No matter how long we have to wait for you.



Practical help carrying out small house or garden jobs, walking a dog or feeding a cat.

Calling in for a chat and providing company or perhaps accompanying someone on a walk.

We do not charge for any of these services, we just ask for a donation if you can afford it. The Durrington & District group has expanded recently but we would still welcome volunteers who may wish to provide assistance as outlined above. There are no set requirements, we can fit in with the time you have available; you do not even have to be a driver as there are non driving jobs by which you can provide a valuable contribution. If however you are able to use your own vehicle you will receive a mileage allowance for any tasks that you carry out on our behalf

If you would like to find out more about LINK or wish to volunteer to help us, please telephone us on 01980 594857 or call our Chairman on 01980 670748



All Saints Church, Netheravon



Christmas Fair and Grand Draw

**Friday 27th
November**
3.30 pm—6.00 pm
Grand Draw
at 5.30 pm

Plants, cakes and preserves, mulled wine, mince pies
Real Christmas Trees (please order — 670326)
BBQ hot dogs (from the happy pigs in Burbage!)
Col. Grumpy's coffee and hot chocolate
Everleigh Farm Shop and many other stalls including:
Jewellery, Virgin Vie, Phoenix Cards and
Children's craft area



The Fair will be held in Church
Admission is free



**BEAUTIFUL GREEN/CREAM CHINESE
100% WOOL RUG WITH FRINGE**

66" x 97" (104" with fringe)

£125.00

**WHITE PORCELAIN
GREEN AND GOLD EDGED
HEREND PLATES**

£5.00 each

**FOR
SALE**

SMALL ATTRACTIVE BOOKCASE

**with 2 drawers
painted in Farrow and Ball
colour String
10¼" x 30" x 28"**

£60.00

**Contact
Lyn Riche
01980 670489**

DRESSING TABLE MIRROR

**very pretty, white, 3-section
bevelled/scalloped-edge**

**Centre mirror approx 12" x 17"
Side mirrors approx 6" x 15"**

£45.00

**FOR
SALE**



Did you know?

Waitrose hold cookery demonstrations every month in the studio of their Salisbury store. Leaflets detailing these events can be obtained in store (by the customer service counter) where you can also book your place. Alternatively you can ring Waitrose Salisbury direct on 01722 329429. The Waitrose chefs usually cook about four dishes- each of which the audience is given a small taster portion, which accompanied by a glass of wine invariably goes down well.

These demonstrations are generally free and are very popular so you need to book early!!!!

**MESSAGES
FOR FRIENDS
AND
NEIGHBOURS**

We would like to wish
a very warm welcome
to all who have recently moved
into the Parish of Enford.

We hope that
you will find
many new friends and
neighbours



CONDOLENCES

to Jacqui Elkins, her family and all
who knew Ricky
Our thoughts are with you
from your friends on the
Newsletter Committee

SADNESS

We were very sorry to hear of the
death of Mrs Blaney who was a
former resident of Enford.
Our condolences
to her friends and family

BIRTH

Congratulations
to Ruth and Jamie Oliver
(Chamberlain)
on the birth of their baby boy, Samuel James

THANKYOU

Thank you from Barbara Waite
for all the cards
and good wishes

SPEEDY RECOVERY

To Linda Reddick
We wish you a speedy recovery.
We shall miss you as will the gardens



WELCOME

A very warm welcome to our
new neighbours in Coombe Lane.
We hope that you will be very happy
and make many new friends

BIRTH

Congratulations
to
Steve and Marie Todd
on the birth
of their beautiful little girl

GET WELL
to
Mr Keightly

BIRTH

Congratulations to Steve and Sam
on the birth
of their lovely little boy, Lewis

GOLDEN WEDDING ANNIVERSARY

Congratulations to Alan and Ann Merrett
on their Golden Wedding Anniversary





**SALISBURY PLAIN TRAINING AREA
NEWS SHEET
November 2009**



This forecast shows our planned training. Unfortunately operational requirements mean that dates and times can change. The warning flags and signs show the actual range danger areas on a given day. Late night firing times Tues, Thurs and Sat March to October 2330hrs and November to February 2100hrs inclusive.

Any general comment about military training should normally be made through Parish Councils to the Liaison Officer nominated by the appropriate Garrison Headquarters. Any specific complaint should be made in writing or if urgent by telephone as shown below:

**HEADQUARTERS SALISBURY PLAIN TRAINING AREA
Westdown Camp, Tilshead, Salisbury, Wiltshire SP3 4RS**

Telephone: Stonehenge (01980) – 620819

TRAINING: The routine levels of training remain much the same as October with the usual run of exercises out of the Land Warfare Centre. The TESEX for 1RGR runs through from October until 5th November. The last 2 weeks of November will be quite busy with a Battle Group of Royal Marines starting their TESEX on 15th November and remain on the plain until 27th. 1 Royal Irish arrive for their TESEX on 24th November which runs through until 4th December

ARTILLERY LIVE FIRING FROM SALISBURY PLAIN (WEST) (AS90)	NIL
LATE FIRING DAYS ON SALISBURY PLAIN (WEST) (AS90)	NIL
ANTI TANK FIRING DAYS ON SALIBURY PLAIN (WEST):	NIL
ARTILLERY LIVE FIRING DAYS FROM AREAS 6, 7 & 8	NIL
ARTILLERY FIRING FROM SALISBURY PLAIN (EAST)	NIL
LATE FIRING FROM SALISBURY PLAIN (EAST)	NIL
LATE FIRING DAYS LARKHILL/WESTDOWN RANGES	3, 5, 10, 14, 17, 2, 26
NON FIRING DAYS LARKHILL/WESTDOWN DANGER AREA	1, 7, 8, 21, 22, 28, 29
NON FIRING DAYS BULFORD RANGES	1, 7, 8, 14, 15, 28, 29
NON FIRING DAYS ON WARMINSTER RANGES	1, 7, 8, 21, 22, 28, 29.

NOTE: Due to unforeseen changes there is always a possibility that there could be firing on other of the days listed. This is particularly so now operational training is being conducted to meet many and varied exigencies. The public should be careful to check that Red Flags are not flying before they enter the range. It is the time of the year when we change late night firing times. From March through to October the Tue, Thurs and Sat night firing times will revert back to 2330hrs.



HELICOPTER NIGHT FLYING : : Night flying normally takes place Mondays to Thursdays inclusive over parts of SPTA. Some aircraft will show no lights but all will operate under strict area control.

AIR ACTIVITIES : Dates and timings given below are those listed at the time of printing but may be altered due to aircraft serviceability or weather conditions.

AIRCRAFT TRIALS:

Aircraft may conduct trials over Larkhill Range on each Wed and Fri from 1200 - 1700 hrs which could involve circuits to the East crossing the Avon Valley.

PARACHUTING. : Parachute dropping is scheduled to take place on EVERLEIGH and FOX COVERT DZs during normal working hours on most weekdays. Outside working hours and at weekends the dates and approximate times are:

PARACHUTING

FOX COVERT DZ (C130)

6 - 2100 - 2300
9 - 2100 - 2300
10 - 1700 - 2200
11 - 1700 - 2100
12 - 1900 - 2100



EVERLEIGH DZ (C130)

4 - 1800 - 2200
5 - 1700 - 2300
16 - 2100 - 2300
17 - 2100 - 2200
18 - 2000 - 2200
19 - 1900 - 2100
23 - 2100 - 2300
26 - 1900 - 2300
27 - 2100 - 2300
30 - 1900 - 2300

IMBER DZ (C130)

NIL Notified

STRIP LANDINGS

UPAVON (C130)

NIL Notified

DEPTFORD DOWN (C130)

NIL Notified

FAST JET ACTIVITY (FGA)

Due to Operational Training (**EX Wessex Warrior**) there could be Air Activity at any time on 2nd & 3rd November on all areas **SPTA C,W & E**

SPTA W

Due to Operational Training (**3 Cdo Orange Marauder**) there could be Air Activity at any time during the period of 18th - 20th November on **SPTA W.**

&

Anytime during the period 23rd - 26th November on **SPTA W**

PLAINWATCH NUMBER 01980 674700

PLAINWATCH is specifically designed to rapidly identify suspicious activity on the Plain: firstly and principally to identify criminal activity but secondly to deter such activity.

We seek the support of those Parishioners who regularly use the Plain for recreational purposes, who when doing so spot what could be termed suspicious or even criminal activity taking place. No approach or contact should be made with potential offenders. If such an opportunity occurs we would be pleased to hear from you via a special telephone number which we have set up within our 24 hour Operations Cell: **01980 674700**. We would welcome your assistance in making the Plain more secure and a safe place to enjoy.

POLICE WARNING

THIEVES OPERATE ON THE TRAINING AREA

SECURE YOUR VEHICLES AND EQUIPMENT
AT ALL TIMES

MINISTRY OF DEFENCE - DTE SP (WEST) IMBER RANGES

1. Notice is given that only the roads from
 - a. Warminster to Gore Cross via Imber, and
 - b. Bratton to Heytesbury via Imber

will be open to the public from 0830 hours Friday 18th December 2009 through to 1800 hours (0600pm) Sunday 3rd January 2010.

2. Please bear in mind that **ONLY METALLED ROADS** will be opened, **all other tracks, stone tracks and Southern Range Road and Imber VILLAGE remain closed (Out of Bounds)** in accordance with the Imber Ranges Bylaws. Any movement off aforesaid roads on the Imber Ranges is forbidden, trespassers are liable to prosecution.

3. Red Flags are flown at the vedette post when live firing is taking place on the ranges. The absence of red flags does NOT imply that the roads are automatically opened to the public, times for which are notified in the Press and displayed on the entrance notice boards.

4. The roads identified above are not maintained to public road standards, if traversing the training area drivers should do so with extreme caution.

IMBER CHURCH SERVICE

The following Church Services are planned for Saturday 19th December 2009.

The Remembrance Service will be held at 1100hrs.
The Carol Concert will be held at 1430hrs.



WILTSHIRE LINK SCHEMES



In a period of declining rural services, seeing the closure of many post offices and changes to the provision of Health services, many older people are being adversely affected and suffering as a result.

Link schemes are volunteer run groups, based in local communities that offer help with transport and good neighbour tasks such as collecting prescriptions, shopping and calling in for a chat. These valuable schemes provide a service which enables many people to remain living independently in their own homes and maintain some quality of life and dignity.

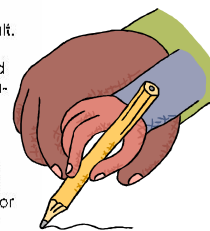
During this difficult period the Link schemes have seen a steady increase in the amount of requests for help and transport from those most vulnerable in our communities. Every week over 900 people, mainly our older residents, are helped to do those things which most of us take for granted. Indeed for many clients the friendly voice and face of a Link volunteer is often the only social contact they may have with their community. Requests for good neighbour help and transport assistance range from helping to change a light bulb to getting to the hospital for an out-patient appointment but regularly include:

- Getting to medical appointments
- Help shopping for food
- Reading requests
- Transport to luncheon clubs and other social events

Each of the 1400 volunteers (approx) throughout Wiltshire make a small contribution which improves the lives of many clients. Existing volunteers get a great deal of pleasure from their work with Link and new volunteers are always welcome. As well as being looked after, appreciated and supported Link volunteers:

- Are reimbursed their expenses
- Decide their own availability and interests
- Achieve an enormous sense of well-being and community spirit
- Make new friends
- Keep active
- Feel valued

Your support, publicity and encouragement of your local Link scheme is welcomed. If you have any questions or comments about either your local Link scheme or the Countywide support organization, The Link Project, then please contact us on: 01380 722241



**COMMUNITY
FIRST**

wiltlink.org.uk

BUS SERVICES

SERVICE 210 ENFORD TO DEVIZES THURSDAYS AND SATURDAYS

OUT

Enford Bus Shelter	09:31
Enford Corner	09:34
East Chisenbury	09:38
Upavon Avon Square	09:42
Upavon, Ship Inn	09:45
Devizes Market Place	10:24

RETURN

Devizes Market Place	12:30
Upavon, Ship Inn	13:07
Upavon Avon Square	13:10
East Chisenbury	13:13
Enford Corner	13:17
Enford Bus Shelter	13:18



Please Note!

**Return Fares from Enford, East Chisenbury or Upavon to Devizes
£6.00 Adult, £2.25 Child.**

**With a valid Wiltshire Fare pass anyone over 60
can now travel FREE ! (instead of half-fare) on this service.**

Advertising

For just a few pounds you can place
an advertisement
in the Enford Newsletter.

£15 per small square for 10 issues

£30 per half page for 10 issues

£5.00 per half page (1 issue)

£10.00 per page (1 issue)

Please contact Peggy Waterkeyn 01980 670418

Avon Valley Chauffeur Service

- ❖ Airports & stations
- ❖ Hotels & restaurants
- ❖ Schools & colleges
- ❖ Business appointments
- ❖ Hospitals & doctors
- ❖ Special occasions



avc@avonvalleychauffeurs.co.uk

01980 630094

Pet Care Services

*Pet Sitting
Home Sitting
Pet Taxi
Dog Walking*

Mobile Pet Grooming

*Warm Water Hydrobath
Full Grooming
Nail Clipping*

Comfy Critters

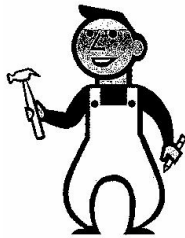
Established in February 2005 and based from our own village of Enford, Comfy Critters aims to bring piece of mind to pet owners in our rural communities

Mob: 07789 378413

Tel: 01980 670458

www.comfycritters.co.uk

Member of National
Association of Pet
Sitters



MIKE TAYLOR

CARPENTER

ROOFING

KITCHEN FITTING

CERAMIC TILING

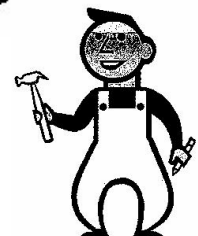
GENERAL BUILDING

PATIOS

FENCING

ENQUIRIES WELCOME with regard to all aspects of construction and maintenance

Please ring 01980 670969 or 07543834684



Carpet Clean

Ricky Flint

Est 1997

Friendly Local Service

Carpetclean@btinternet.com

Great Bedwyn 07799 215837



Avon Small Saints Pre-School

All Saints Primary School, High St. Netheravon

Registered to provide day care for 2-5 year olds

Morning Sessions • Lunch Club • Afternoon Sessions

For more information, please ring Elka (supervisor) on:

01980 671681 www.avonsmall saints.co.uk

Ofsted Reg. No. EY338057 Reg. Charity No. 1033639

M NASH & P WILKINS

***ALL LANDSCAPING WORK UNDERTAKEN
FENCING*PATIOS*PATHS*PONDS*
BRICKWORK
HEDGE CUTTING*GARDEN CLEARANCE
GRASS CUTTING***

***Tel: MIKE 01380 840767
Mobile: 07977 950654***

***Tel: PAUL 01380 840763
Mobile: 07970 557002***

CAN I HELP?

CONSERVATORY CLEANING, WINDOW CLEANING AND GENERAL MAINTENANCE

Has your conservatory lost its new shiny look, windows impossible to clean then, CAN I HELP could be the solution

As well as normal window cleaning service, other things undertaken include painting and decorating, brickwork and carpentry.

In fact any task in the home and garden.

Man and Van service also available.

All work is guaranteed.

For a free quote and written estimate if requested contact

Contact Peter 07875 238730

***MODERN & TRADITIONALLY
DESIGNED MEMORIALS***

M J SLY

Monumental Stonemason

*New Memorials, Additional Inscriptions
Restorations, Free Home Visits
Free Brochure*

Marlborough (01672) 516797

Email: martin@mjsly.co.uk

Website: www.mjsly.co.uk

*Workshop & Showroom at Pelham Court,
London Road,
Marlborough, Wiltshire*

ELSTON VETERINARY CLINIC

ELSTON LANE, SHREWTON

Dr. Enid Frantilla, DVM MRCVS

Small Animal Medicine and Surgery

*Providing high quality pet healthcare
and a caring, friendly professional service
HELPING YOU TO HELP YOUR PETS!!*

Consultations by appointment, Mon-Sat

*For appointments or enquiries, and
24 HOUR EMERGENCY SERVICE*

01980 621999

ROD SMITH

The Garage

Netheravon

UNIPART CAR CARE CENTRE

MOT Tests

Car Repairs & Servicing

Now able to service air conditioning units

Batteries, Exhausts & Tyres at Competitive Prices

Handy Gas

Tel: Stonehenge (01980) 670348

AGRICENTRE

*Now stocking Frontline for cats and dogs
at an unrivalled price*

*Excellent products at an excellent price from
well-known horse wormers*

Electrical fencing

Complete range of Briswim pool chemicals

FREE HOME DELIVERY!

*Contact: Justin Young, A.M.T.R.A., SQP
(Branch Manger)*

07850 184111

01722 320316

Yoga, Pilates & Nia classes

Mon 10.00am	Pilates	Rushall Village Hall
Mon 11.15am	Yoga	Rushall Village Hall
Tues 7.30pm	Yoga	Upavon Village Hall
Weds 9.30am	Yoga	Rushall Village Hall
Thurs 9.30am	Nia	Rushall Village Hall

Nia is a dance based fitness programme which promotes strength, stamina, flexibility, stress reduction, co-ordination, weight loss and much more. Nia is a free spirited and fun way to get fit. This is a drop-in class (£5) and is suitable for all levels of fitness.

Yoga and Pilates classes are booked on a termly basis. All classes, including Nia run during Wiltshire Schools term times.

Visit www.fulcrumyoga.co.uk or email debby@fulcrumyoga.co.uk or call Debby Wilkinson on 07505 142285 for further details.

Debby is a British Wheel of Yoga teacher and a course tutor for the British Wheel of Yoga teacher training programme. She also qualified with the Pilates Institute and is a Nia White Belt teacher.

Avon Security

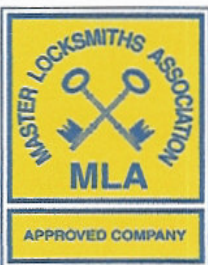
MASTER LOCKSMITHS

Engraving Service Now Available

- > Brass
- > Plastics
- > Aluminium
- > Glass
- > Trophies
- > Gifts

Free Advice & Quotations On Securing Your Property & Belongings

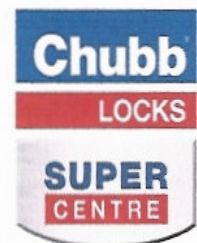
Key Cutting
Locks Supplied & Fitted
Access Control
Safes
PVCu Locks
Master Key Systems
Lock Repairs
Door Furniture & Ironmongery
Transponder Car Keys
Keys To Code
Watch Batteries & Straps
Emergency Call Out Service



01980 626000

21, Salisbury Street, Amesbury, Wiltshire, SP4 7AW

www.avonsecurity.net



iT SOLUTIONS

Tel: 07867 988140
www.ManageIT.info

Your local computer and internet experts friendly, professional & affordable advice for home & small business users

Do you need help with ...

Internet, Broadband & Wireless connection problems?
 Database management?
 Linking various computers together?
 Converting to / from Mac?
 Tailor-made systems?
 Just getting your computer to do what you want it to?

Help is at hand – just telephone now!

BEAUTY THERAPY • AROMATHERAPY
 REFLEXOLOGY • INDIAN HEAD MASSAGE
 Facials • Manicures • Pedicures
 Massage • Waxing
 Bridal Makeup

Gift
 Vouchers
 available



Make-up
 Advice &
 Lessons

Jennie Aird Gauntlett
 ITEC BAPTAC MIFHB MICTH IHHT

A full complement of beauty treatments for Face and Body
 To make an appointment call 01672 851445

“ 14 years in the area ”

**For just a few pounds you can place
 an advertisement
 in the Enford Newsletter.**

£15 per small square for 10 issues

£30 per half page for 10 issues

£5.00 per half page (1 issue)

£10.00 per page (1 issue)

Please contact Peggy Waterkeyn 01980 670418

D Taylor

**Building Services
 Bricklayer & General Builder**

**All Building Works undertaken
 Including Extensions, Garden Walls, Patios,
 Roof Repairs, Plastering
 Floor & Wall Tiling etc**

**01980 671078
 Mobile No: 07719916854**

CHINA RESTORATION

Specialist in Antiques & Figurines

24 Years Experience

Workshops Arranged Throughout The Year

Tel: 01672 851445

Web: crackedpots.co.uk

G. B. Chamberlain

Flooring Specialist

Specialising in Ceramic
Floors and Walls

Tel: 07971 182752

24 hour answer service

OIL FIRED BOILERS

**For prompt reliable –
SERVICING
REPAIRS
COMMISSIONING**

Call Tim Walsh

**Tel. 01980 652803
Mobile 07919603884**

FRED MONRO Contemporary Interiors

**Bespoke carpentry
Made-to-measure kitchens and furniture
Affordable prices
Free quotations**

**Call: 07717 416423
Email: fred@fredmonro.co.uk
www.fredmonro.co.uk**

Made-to-measure kitchens and furniture

GALAXY DISCOTHEQUES

- Professional DJ Host Compere
- Disco's
- Video Disco's
- Karaoke Show's

**Disco Entertainment for all occasions
(Enford Based)**

**07050 164071
professionaldj@btinternet.com
www.niagraentertainments.co.uk**



B REPAIRED

Musical Instrument Repairers

Graham & Yvonne Ballard
The Music Studio 8 Thurlow Close
Amesbury Nr. Salisbury
Wiltshire SP47QG

**01980 625380
07957 806401/2**

www.brepaired.co.uk



WILTON CARPETS

Jon Card

Your local contact for
Your area

- Great Carpets
- Great Choice
- Great Prices

Full Measuring , Estimating
& Guaranteed Fitting

e-mail ; joncard@wiltoncarpets.com

Tel ; 01722 742733

TIM BUCKLAND BOILER MAINTENANCE

FOR SERVICE AND BREAKDOWNS

*Friendly and efficient service
Wide stock of boiler spares in stock*

VERY COMPETITIVE PRICES

Also AGAs and RAYBURNS serviced

Tel: 01980 625846

CAROL G DAYTON

ITEC MGPP IHHT T.A.Th

*Massage Therapist
Indian Head Massage
Reflexology
Skenar Therapy
Reiki
Hopi Ear Candles
Injury Treatment
Waxing and Sugaring*

For further information please call:

**01980 653151
or 07787 513563**

M.W. WALSH



TREE SERVICES

All aspects of tree surgery and hedge
maintenance professionally undertaken

HIGH QUALITY WORK

FULLY INSURED

PERSONAL SERVICE

FREE ESTIMATES

01980 670032

• NO VAT •

*Whether it's a dazzling new colour, new textured or
classic haircut, Louise and Stacie look forward to
helping you achieve your stunning new look. Come
along for your free consultation.*

Appointments not always required.

Tina's Hairdressers

High Street, Netheravon

Open – Tuesday 9-5.30, Wednesday 9-2,
Thursday 1-7, Friday 9-6, Saturday 9.00-2

Closed – Sunday and Monday

Tel: 01980 670628

New Range of Jewellery and Bags For Sale

RGV ENGINEERING (NETHERAVON) Ltd

HIGH STREET

NETHERAVON

01980 670667

Local family business established over 30 years

**SPECIALISTS IN PLUMBING,
HEATING AND ELECTRICAL
BOILER SERVICE AND
COMMISSIONING**

CORGI * OFTEC * NICEIC * ECA



*******B J LONG*******

(**AKA BERTIE**)

Live music from the 1950s 60s 70s

FOR BOOKINGS

01980 670767

0772 4104106

E-Mail: bjlong@hotmail.co.uk

Redmayne-Bentley Stockbrokers

REDMAYNE
BENTLEY
STOCKBROKERS

Your friend on the Stock Exchange

To discuss how we can help, please contact either
Hugh Lancaster or Gerald Lowes

Telephone: 01488 686400

Email: Hungerford@redmayne.co.uk

Visit: www.redmayne.co.uk/hungerford

BEST ADVISORY BROKER

INVESTORS INVESTMENT
CHRONICLE AWARDS 2008

SILVER AWARD



2003-2007: BEST ADVISORY BROKER

VAT No: GB 613 139 763. Members of the London Stock Exchange
Authorised and Regulated by the Financial Services Authority

*WORRIED ABOUT INLAND REVENUE
SELF-ASSESSMENT?*

*Why not talk to a commercially-experienced
Chartered Accountant? Local help is at hand.*

MERPEN ACCOUNTING

*Accountancy & Small Business Advisory
Management*

**Hands-on help *No job too small *Even part-time,
money-making hobbies *Initial discussions free of
charge *Further work done professionally for probably
the lowest fees around*

Alan Merrett FCA

Eagle Lodge, East Chisenbury, Pewsey, SN9 6AQ

Tel: 01980 671441

www.pewsey-uk.co.uk/merpen-accounting.html



OIL TANKS



YOUR LOCAL OIL TANK REPLACEMENT SPECIALISTS

S
T
S
SOUTHERN
TANK
SERVICES LTD

- COMPETITIVE PRICES
- DOMESTIC & COMMERCIAL
- FULL REPLACEMENT SERVICE
- FRIENDLY & RELIABLE
- FREE QUOTATIONS

TELEPHONE 01985 248 555

www.tankservices.co.uk Deptford Farm, Wylye, Wiltshire, BA12 0QQ

SUCOL Solutions



Home PC Tuition and Setup
Home Network Setup
Data Storage and Backup
Small Business Server (SBS)
PC and Server Repairs
Network Infrastructure
Design and Installation
CAT5e Cabling
IT Consultancy

Colin Mundy

22 Willow Drive
Durrington
Salisbury
Wiltshire
SP4 8DE

Tel: 01980 594368
Mob: 07989 261778
Email: colin.mundy@ntlworld.com

Bits & Pieces (Durrington Ltd)

BUILDING, GARDENING & DIY

PETS, PANELS, AGGREGATE

**37 - 39 Bulford Road, Durrington
Wiltshire SP4 8DL**

Tel: 01980 655552

Fax: 01980 652351

Proprietors: P & M Conn

GRAHAM BUCKLAND SERVICES

*General building maintenance: plumbing,
Carpentry, glazing, brickwork, etc
Free quotes and reasonable rates*

*'Man with a Van' hire.
Removals and House Clearance
Undertaken*

**Tel: 01980 670870
or 07831 889 666**

Cape Cuisine

ONLY THE BEST HOME-COOKED FOOD

*Weddings, Anniversaries, Parties.
Hot or Cold Buffets*

For Quotations Phone:

01980 590808

Carpet & Upholstery Cleaners

Salisbury Amesbury Andover
and surrounding areas

**See our
Website
for latest
offers!**

- * Local reputable company
- * Fast, efficient, no-nonsense service
- * Inclusive fixed price quotations

For your **free**, no obligation quote call: **01980 621621**
enquiries@cleanlivingmcc.com
www.cleanlivingmcc.com

*"It's blue, it's
blue!"*

CLEANLIVING

Specialising in delighted clients

Finalist in two categories at the
Business Excellence Awards 2009

PEST CONTROL SERVICE

*RABBITS, RATS, MOLES
WASPS, SQUIRRELS
BIRD PROOFING*

CALL NIGEL

**01980 670804
07854 828904**

GDB TECHNICAL SERVICES LIMITED

Computer/IT support
Small business and Home users

Networking issues/installations
PC Problems
Tuition
General IT advice/help
Upgrades
Data Recovery
Service Support Options

Call **01980 623052** or visit
www.gdbts.com to see if we can help.

GRAHAM C BROWN & SON**Oil boiler maintenance**

**A well-established, friendly, local
company, operating within the
Salisbury Plain area.**

01980 622737

DJ Landscaping

**No Job Too Big Or Small
Just call us we do it all**

- Lawn Mowing
- General Tidying
- Hedge Cutting
- Turfing
- Fencing
- Ponds
- Paths
- Brick Works
- Leaf Collection
- Pruning
- Weeding
- Decking
- Patios
- Pergolas
- Driveways

Free estimates, Hourly Rates
Regular appointments are available

Call the company you can trust

Tel: 01980 846740

Mob: 07717 831907

For just a few pounds you can place
an advertisement

in the Enford Newsletter.

£15 per small square for 10 issues

£30 per half page for 10 issues

£5.00 per half page (1 issue)

£10.00 per page (1 issue)

Please contact Peggy Waterkeyn 01980 670418



MOBILE HAIRDRESSER

Ring Donna

on

07711 579403

KD WORSDELL

**Carpentry & Joinery
Building Works & Maintenance
Bathrooms and Kitchens**

Please Call

01980 630545

Or

07759 586162

VILLAGE COMMITTEES**PARISH COUNCIL**

Chairman	Ken Monk	670540
Vice Chairman	Tessa Manser	670605
Parish Clerk	Bill Vergette	670132
Councillors	Stan Bagwell	670154
	Norman Beardsley	670860
	Sara Everett	670475
	Michael Fay	670553
	Ann Merrett	671231
	Martin Webb	670537
	Jane Young	670532
	Frank Horsford	
	Adrian Orr	

VILLAGE HALL

Chairman	Judy D'Arcy-Irvine
Vice Chairman	
Treasurer	Glenda Clark
Secretary	Jeni Scott Dalglish (670210)
Parish Council Rep	Jane Young
Parish Hall Rep	Ann Merrett
Football Club Rep	Julien Lee
PCC Rep	Sarah Campbell
Newsletter Rep	Jacqui Elkins
Booking Officer	Judy D'Arcy-Irvine (670501)
Property Officer	David Spencer
Grounds Officer	Hamish Scott Dalglish

PARISH HALL

Chairman	Colin Pearse
Vice Chairman	Jacqui Elkins
Treasurer	Margaret Young
Secretary	Katrina Knight

FOOTBALL CLUB

Chairman	Julian Le
Secretary	Julian Lee
Treasurer	Ollie Staggs
1st Team Manager	Julian Lee
2nd Team Manager	Ian Lawes

PAROCHIAL PARISH COUNCIL

Church Wardens	Michael Hadfield John Poole Warren
Treasurer	Jonathan Walsh
Secretary	Sue Poole-Warren
Council Members:	Sarah Campbell Judy D'Arcy-Irvine Bob Hastie Frank Horsford John Manser Alan Merrett Henry Middleton

THE VICAR

Rev Colin Fox
The Vicarage,
Netheravon
01980 670326

NEWSLETTER COMMITTEE

Chairman	Tanya Becker
Vice Chairman	Linda Mundy
Secretary	Linda Mundy
Treasurer	Linda Mundy
Advertising	Peggy Waterkeyn
Village Hall Rep	Jacqui Elkins
Parish Council Rep	Jane Young Sylvia Latham Ann Houghton Gay Monk Clare Burge

SCHOOL GOVERNORS

Chairman	Colin Cruikshanks
Clerk	Sally Jones
Enford Rep	Andrew Marx

NEIGHBOURHOOD WATCH COORDINATORS

Area Co-ordinator - Steve Becker (steve@becker.globalnet.co.uk)

Coombe Lane East (30-45)	Jo Crossland
Coombe Lane West (1-17)	
& Fifield	Angie Taylor Terry Mundy
Coombe	Ednah Beardsley Peggy Waterkeyn
New Town	Not Filled
Enford South (LongStreet)	Venessa Murray Hill
Enford Central	
(Enford Hill & Hill Farm Road)	Sarah Campbell
New Buildings	Stan Bagwell
Compton	Bruce & Lucy Waight
West Chisenbury	Derek Ford Rod Mason

East Chisenbury (North)	Stephen Calton
East Chisenbury (Central)	Vicky Orr
East Chisenbury (South)	Barry Chamberlain
Enford North & Littlecott)	Not Filled
Grants Road (North) (14-29)	Ian Teasdale
Paddocks Close	Colin Pearse
Water Lane (East)	
(East from Field View)	Lyn Riche
Water Lane (West) (1-10)	John Powell
Grant's Road (South)	
(1-13, 30-33)	Not Filled

For Your Diary

November 2009

1 st	Sunday	Holy Communion, 9.00am
2 nd	Monday	
3 rd	Tuesday	Quiz, The Swan Inn, 9.30pm
4 th	Wednesday	
5 th	Thursday	Black Bin
6 th	Friday	
7 th	Saturday	
8 th	Sunday	Remembrance Day Holy Communion 9.00am
9 th	Monday	
10 th	Tuesday	Upavon Good Companions Trip to Poole/ Quiz, The Swan Inn, 9.30pm
11 th	Wednesday	
12 th	Thursday	Recycling
13 th	Friday	
14 th	Saturday	
15 th	Sunday	Family Communion, 10.30 am
16 th	Monday	
17 th	Tuesday	Quiz, The Swan Inn, 9.30pm
18 th	Wednesday	Cancer Research Christmas Fair, Figheldean Village Hall, 10.00am – 3.00pm
19 th	Thursday	Black Bin
20 th	Friday	Youth Club – Presentation by High Sherriff of Wiltshire, 7.00pm
21 st	Saturday	Jumble Sale Children in Need, Parish Hall, 2.00pm/Church Christmas Fair, Enford Church, 2.00pm
22 nd	Sunday	Evensong, 6.00 pm
23 rd	Monday	
24 th	Tuesday	Film Night, Enford Village Hall, Cheri, 7.00pm/Quiz, The Swan Inn, 9.30pm
25 th	Wednesday	
26 th	Thursday	Recycling
27 th	Friday	Netheravon Church Christmas Fair, Netheravon Church, 3.30pm – 6.00pm
28 th	Saturday	
29 th	Sunday	Youth Club Bingo Village Hall, 3.00pm – 5.00pm/Advent Carol Service 6.00pm
30 th	Monday	