

ENFORD NEWSLETTER



July 2009

**You can now read the Enford Newsletter in colour
at**

www.enfordnewsletter.org

**In addition you will find interesting articles news,
colour photographs and past Newsletters**

plus

useful information and services

CONTENTS

ENFORD NEWSLETTER

Newsletter Website/Envelope Collection/Treasurer Ad/Moviola Comes to The Village Hall	1
Enford & Chisenbury Golf Match	2
Village Hall Update from the Trustees/200 Club Draw	3
Enford Movies	4
Village Hall News/Dog Walkers	5
Enford Village Hall Activities	6
Summer Fete Netheravon School/For Sale	7
Highway News/Incident reported to MOD	8
A Message for July from our Vicar	10
Church Services & Cleaning/Vicarage Fete/Christian Aid	11
National Gardens Scheme	12
Clubs/Message	13
Pewsey Children's Centre/Fittleton Concert	14
Joke	15
Village Hall Hire Charges	16
SPTA News	17
Walking In Wiltshire	19
Wiltshire Link/Bus Services	20
Advertising	21
Village Committees	31
June Diary	32

DATE OF AGM, NEXT COMMITTEE MEETING & DEADLINE



Wednesday 22nd July



All items for inclusion, whether they are handwritten, typed or via e-mail, ***MUST be submitted by the date of the meeting or they will not be published until the following month.*** These articles may be handed in to any Newsletter Committee member. Please send e-mails to

tanya@becker.globalnet.co.uk

Enford Newsletter Committee reserves the right to reject or omit from publication any material that is considered by majority of Committee Members to be detrimental to any person or which is not in the best interest of the community as a whole. All letters and articles must be signed, but the Committee will withhold the name of the writer if this is requested at the time of

sending it in.

www.enfordnewsletter.org



www.enfordnewsletter.org

Don't forget you can read the colour version of the Newsletter at www.enfordnewsletter.org. You will also find a list of local services and telephone numbers.

ENVELOPE COLLECTION

This month we have attached the brown envelope for any contribution you would like to make towards the cost of running the Newsletter. As all readers will know, The Parish Council and the Parochial Church Council both give generous donations each year. We are very grateful to them for this.

Nevertheless, we still depend on your own kind generosity to cover about half the cost of production.

If every household could donate £5 this would go a long way towards that goal. The remainder is covered by advertising.

All you have to do is place your donation in the envelope and have it ready for collection. This may be done by the person who delivers the Newsletter or it may be by a member of the Committee. You can of course hand it to any member of the Committee if that is easier. The collection will take place in the two weeks following the distribution of the July issue.

Thank You

TREASURER

FOR THE VILLAGE HALL COMMITTEE

The Committee is looking to replace Alan Merrett who is retiring after 10 years in the position. We are all very grateful for all his enormous contribution and for managing the finances throughout the building project. With the completion of the Hall, this is an exciting period for Enford, Chisenbury & Coombe.

The successful person would :

- a) Appeal to someone who enjoys community involvement
- b) Have some experience of single-entry book-keeping (not essential, as Alan is happy to work with a candidate for a handover period)
- c) Be prepared to present the Income & Expenditure report at the quarterly meetings and the annual accounts at the AGMs in September

Ongoing duties entail keeping a simple analytical cash book, banking cash/cheque receipts, making payments and managing cash flow.

Alan Merrett is happy to work with the candidate to ensure a smooth handover if necessary.

Please contact Judy D'Arcy Irvine on 01980-670501 or email enfordvillagehall@btinternet.co.uk for further information



MOVIOLA COMES TO THE VILLAGE HALL



What a treat! On Tuesday 9th June we were able to 'walk' to our new village hall to watch a film that has recently been showing at the cinema in Salisbury

This was a special evening for several reasons. Apart from voting, it was the first time we had attended a function in our wonderful new village hall, the film, Slumdog Millionaire was a film we had long awaited to see and on a lovely evening it was a pleasure to walk rather than have to drive to somewhere else.

We were met by friendly smiling faces and there was a real buzz from a rather noisy, excited crowd of people. Some faces we recognised and some we did not but it would not have mattered if there had been no-one there whom we knew. There was just a good feeling that the village had moved a big step forward in trying to maintain that sense of community for which Enford is known

The hall is a good size in that it is cosy yet big enough for any function. I think that there were about 60 people there that night with room for many more. I feel that we all enjoyed the evening; the glass of wine of course adding to the ambience.

I really would recommend this as an evening out.



TB

ENFORD & CHISENBURY GOLF – 3rd JULY 2009

1. General. It is proposed to hold a fun day out with an Enford and Chisenbury golf match at the Upavon Golf Course on Friday 3rd July. Assemble at 12.00pm for a Tee Off at 12.30pm. We are looking for a minimum of 12 players to take part. The intention is for 4 teams of 3 players to play 18 holes stableford.
2. Costs The cost for the afternoon golf is £23 (£18 for the green fee and £5 for prizes). Any money remaining will be donated to the Village Hall and Church. Members of Upavon Golf Club need not pay the £18 green fee.
3. Handicap. All play will be off full handicap. Maximum handicap for gentlemen is 28 and 36 for ladies. Please be honest when completing your entry form!
4. Prize Giving. Prize giving will take place in The Red Lion at 6.30pm. After prize giving everyone along with wives and friends are very welcome to stay on and have supper afterwards.
5. This is a fun day out, so come and join us.

ENTRY FORM

1. Name:..... Phone:.....
2. Handicap:..... If none Gents 28, Ladies 36 and be honest.
3. Entry Fee:..... £23 or £5 if a member at Upavon.

Please reply by 26 June to either:

Adrian Orr
Chapel House
East Chisenbury
Tel: 670447

or 'PK' Kenny
Wayside Cottage
Longstreet
Enford
Tel: 670033





ENFORD VILLAGE HALL

“THE FIRST MONTH OF THE NEW VILLAGE HALL”

With the builders still finishing off the last of the ‘snagging list’, we opened for business on June 4th with the Polling Station for the European and County Council elections. The Council staff claimed to be absolutely delighted with the new facilities and claimed it is “a huge improvement on the old Hall. A pleasure to spend the day in”.

That first week also included a private party on Saturday night for 100 guests. Grateful thanks to Lowenna Harbottle, Mary Burdick and Lyn Riche who were responsible for putting together the equipment list for the kitchen and this was put to good use for the first time.

The Hall was cleared, cleaned and ready for the Antiques & Collectors’ Fair (run by Barry Browning of Dolly Décor) on Sunday morning which was so popular he has booked two more dates (Sunday 6th September and Sunday 6th December 2009).

Exercise classes began in earnest with Pilates on Tuesday morning run by Tiggy Martin and 10 keen participants.

That Tuesday evening, Gill Gould and David Spencer were ready to welcome Moviola to set up their cinema screen for the showing of “SLUMDOG MILLIONAIRE” to 66 keen movie-goers. Gill provided excellent refreshments, ably assisted by Susie Winter, and Margaret and Martin Webb gathered useful feedback via their Questionnaire. The responses were extremely positive and we will be addressing those comments regarding the volume and the length of the trailers. In addition, in time for “YOUNG VICTORIA” on July 7th, we will have looked at the ventilation issue in the Hall. We are grateful to all those of you who completed the questionnaire.

As always, if you have any questions, suggestions or comments, please contact any of the Committee (via the newsletter/address book) or send us an email to

enfordvillagehall@btinternet.com.

As always, if you would like to get involved in any way at all or would like to give us advice, please call/email any of the Trustees direct (listed in the Newsletter and in the Address Book) or email to enfordvillagehall@btinternet.com.

ENFORD FOOTBALL CLUB



The winners of the 200 Club Draw are as follows:

May

200 Club Draw

£50	57	Caroline Stagg
£25	74	Heather Bradley
£15	144	Douggy Graham
£10	190	Sam Lee
£10	156	Christine Gallichan
£10	124	Corolie Young



Enford Movies



Thank you to all who came to our first Movie Show at Enford Village Hall. We hope you enjoyed it.

Thank you also for completing our questionnaire. We received many positive comments, which are very much appreciated by the organisers. We also appreciated your thoughts where you think improvements could be made. You can be certain we have listened and we will act upon them as much as possible.

For those who expressed a wish to join the **Enford Movie Club**, we shall be starting the club in September (Unfortunately the Moviola company do not run movies during August). We shall contact you nearer the date with more details. For those of you who want to help to choose these movies, we will also be contacting you in the near future.

On Tuesday 7th July we are showing 'The Young Victoria'

Julian Fellowes' account of Victoria's early life: an unhappy childhood, accession to the throne at 18, and marriage to her handsome cousin Albert.

Starring

Emily Blunt, Rupert Friend,
Harriet Walter and Jim Broadbent.

This is a PG* rated film.

Tickets are now available from

Gill Gould 01980 671462 the.goulds@lineone.net or
Margaret Webb 01980 670537 webb14@btinternet.com

Tickets **paid for and collected in advance** are £5 per person. However, you can buy tickets on the night for £6 per person. Doors open at 7pm and there will be drinks and ice creams available during this time, and also after the film. You will be please to know that there will not be any trailers!

*PG means Parental Guidance - there is no age restriction, but parents need to be aware that there might be things in it that could disturb very young children for example.



ENFORD VILLAGE HALL

In association with

WILTSHIRE MOVIOLA

Proudly presents

The Young Victoria (PG)

"Love Rules All."

**Emily Blunt Rupert Friend
Harriet Walter Jim Broadbent**

Julian Fellowes' account of Victoria's early life: an
unhappy childhood, accession to the throne at 18, and
marriage to her handsome cousin Albert.

Tuesday 7th July at 7.30pm

Doors open at 7pm

In Enford Village Hall

Tickets £5.00 (in advance) £6.00 (on the door)

Refreshments and ice creams served in interval

For tickets call Gill on 01980 671462

Or Margaret on 01980 670537

Visit our website at www.enfordnewsletter.org or
www.moviola.org.

Village Hall News

Village Hall Classes & Advertising in The Enford Newsletter

The Enford Newsletter Committee is happy to advertise any classes or activities in our New Village Hall. As a welcome to the village we would like to offer your first advert free of charge. Thereafter, if you wish to advertise standard rates will be charged.

See our advertising section at the end of the Newsletter for current rates

ENFORD SHORT MAT BOWLS CLUB

**A Short Mat Bowls Club will be opening
in our
Village Hall.**

**Bowling is a sociable, fun game so do come
along for a taster evening**

on

Wednesday 2nd September at 7.30pm.

A Local team is coming to demonstrate
how to play and then you can have a go!

**Phone David or Ros.... for more details
01980 670526**

Or come along to the hall on the evening

Cost: £3 per evening

Everybody welcome – no previous experience required!

A POLITE NOTICE TO PEOPLE WALKING THEIR DOGS IN COOMBE LANE



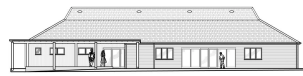
I am a patient person and a dog lover. Like most people, however, I am not a great lover of the mess dogs leave behind. Even less so when I step in some in my own drive when I do not have a dog!

I would ask the person who is allowing their dog to regularly use my garden in Coombe Lane as a toilet to either keep their dog under control or clean up after it. After all it is a legal requirement.

This is not a one off incident. It is becoming a regular almost daily occurrence so please control your dog in the lane.

Thank you





ENFORD VILLAGE HALL ACTIVITIES

Day	Activity	Time	Contact
Monday	Tatty Bumpkins	10.00am – 12.00noon (weekly, term time, from June)	class@northwiltshire.tattybumpkin.com 0845 6804658
Monday	Absolute Defence	7.00pm – 9.00pm (6 sessions starting 8 th June)	Ollie Braithwaite 07885 99 2000 jrob6000@hotmail.co.uk
Tuesday	Pilates	9:15am – 10:15am (weekly, term time, from June)	Tiggy Martin 01980 670438 tiggymartin@tiscali.co.uk
Tuesday	Bridge Club	10.45 am- 12.45pm (Sept15,22,29 & 6 Oct)	Jeni Scott Dalgleish 01980 670210 Jscottdalgleish@aol.com
Wednesday	Tatty Bumpkins	10.0am – 12.00noon (weekly, term time, from June)	class@northwiltshire.tattybumpkin.com 0845 6804658
Wednesday	Flower Arranging	2.30pm – 4.30pm (2nd Weds in month from Sept)	Ann Merrett 01980 671231 eagleann39@aol.com
Wednesday	Short Mat Bowls	7.00pm – 10.00pm (from Sept)	David Spencer 01980 670526 spencersgb@yahoo.co.uk
Thursday	Pilates	8:30am – 9:30am (weekly, term time, from June)	Nicci Caswell 01980 670382 niccicaswell@btopenworld.com
Thursday	Photography Club	8.00pm – 9.00pm (1 st Thursday in month from Sept)	Martin Webb 01980 670537 webb14@btinternet.com
Thursday	Gardening Club	8pm – 9pm (3 rd Thursday monthly, all year, from September)	Gill Gould 01980 671462 the.goulds@lineone.net
Friday	Stretch and Tone	9:30am – 10:30am (weekly, term time, from September)	Julia Fielden 07904 118 215 julia@bodydynamics.co.uk
Friday	Youth Club	6:30pm – 9pm (fortnightly, term time /tba)	Emma & Peter Jefferies 01980 670045 emmajefferies@btinternet.com

There is also interest in Mini Tennis.

We are building up a team of adult helpers for the Youth Club. We would love to hear from anyone who is interested and who can commit to one Friday a month.

Enford Football Club are planning to move back next season, and plan to introduce Junior football once they are up and running.

There will be a Toy Library session, for one day only, on 18th August. Timings tbc

If you are interested in attending any of these, want to book in your own activity, or have any ideas or suggestions, please contact Gill Gould (01980 671462, the.goulds@lineone.net) or Margaret Webb (01980 670537, webb14@btinternet.com)

***** Several people have already booked the hall for private events in 2009! If you are thinking of holding a private party or event at the hall, we recommend you contact us soon to check the availability of your preferred date*****

**NETHERAVON ALL SAINTS PRIMARY SCHOOL
&
SMALL SAINTS PRE-SCHOOL**

SUMMER FETE

SUNDAY 19TH JULY

AT NETHERAVON ALL SAINTS SCHOOL

2.00 PM - 4.30 PM

RAFFLE, CAKE STALL, BEER TENT, GAMES, TEA AND COFFEE
BOUNCY CASTLE, FERRET RACING, TOMBOLA

ANY DONATIONS OF CAKES OR BOTTLES FOR TOMBOLA GRATEFULLY RECEIVED

PHONE TRACY ON 01980 670094

FOR SALE

1 POWABYKE TWIST AND GO MK1 SHOPPER (Electric Bicycle)

Complete with bell, mirror, brand new pannier bags on rear luggage rack, brand new pedals and a brand new, wide, gel- filled saddle which makes it very comfortable to ride. I am also including a battery charger, a pair of brand new, unused deep tread tyres, 1 spare brand new, and unused throttle unit, and also, 1 brand new, and unused, spare left-hand brake assembly.

I am asking £140, in total, for this package.

Please contact me on ceb559@hotmail.co.uk for more details

BRAND NEW LAURA ASHLEY MALMAISON LARGE RUG

170cm X 240cm, Colour Eau de Nil.

Unwanted gift.

Would accept £100 ono - Original price was £250.00.

Tel:(01722) 325291



**JOHN LEWIS LOVELY BEECH TABLE
(AS NEW)**

30" Wide x 48" Long x 34" High

£60.00 ono

Tel:(01722) 325291

GRUNDIG 32" COLOUR TELEVISION

Good Condition

£30.00 ono

01980 670489

Highway News

Hello Enford Parish Residents

The A345 Road Surface Conditions from Enford through to Netheravon.

We are still lobbying the Authorities about the deteriorating road surface and the encroachment of large HGVs on the side verges and residential properties of the A345. Now that Unitary Council has been decided, we shall remind the Leadership of the Council of the promises that were made on the run up to the elections and that promise was that there would be more investment on highway maintenance in Wiltshire County and that this would be a No1 priority .

On the 11th June BBC Radio Wiltshire morning programme ran a telephone "phone in" of "Pot Holes" around the county. Enford put their pennyworth in about the A345 being "Pot Hole Alley", this was put out over the airwaves amongst other rural problem areas. This same morning I was contacted by Ashley Heath the BBCs roving journalist reporter who said he was in Bulford and could he come and see me about the A345 "Pot Holes". We met at New Buildings and I took him in our car on a recce along the A345 from West Chisenbury through to Netheravon. Whilst we were driving he interviewed me on the problems we have along this stretch of the A345. I made it quite clear that the road had been ill maintained and that it is ill equipped for the large Heavy Goods Vehicles that are using it and it is also dangerous due to the speed of vehicles and the "Pot Holes" are a hazard for all road users. He said that the BBC would possibly run the programme within two weeks and they might get Wiltshire Council to agree to a phone in on the conditions of the A345. My comment to this was I would be delighted to discuss the issue and now is the time for them to put their money where their mouth is. We are now part of the A338/A346/A345 Tidworth Joint working group. The common aim of this group is to lobby the Authorities to reduce the current amount of HGVs that are using small rural roads like the A345. At the last meeting this May 2009 Mr. Alan Feist attended, this gentleman is George Battens 2nd in command. He was left in no doubt of the problems we are experiencing here at Enford regarding the A345 and the C32.

The A345. West Chisenbury and Newtown Request for a Speed Reduction

Further to our report in the May 2009 issue of the Newsletter. Mouchel Engineers. Wiltshire Councils Highway advisors were in Enford this May inspecting the area. When approached they would not commit themselves only to say that they were carrying out a speed limit survey. I do not want to get residents hopes up but Wiltshire Council are duty bound by Government to reassess "A" and "B" road speed limits by this year, our request for a reduction of speed between these two areas have been logged at Trowbridge so I am hopeful that we will get some reduction of speed along the A345.

Speeding and Enforcement

This issue has been now been discussed at several meetings of the Pewsey Area Community Planning Partnership. It has also been on the agenda of two of the pilot area board meetings. And it is now on the agenda of the first Full Area Board Meeting at Pewsey this July. We have been informed that the Police will be making a presentation at this meeting and also Wiltshire Council Highways will also be making a presentation, so we are hopeful that some of our concerns will now be addressed.

Enford Community Speed Watch

This scheme is progressing well, come this August we will have been carrying out the speed watch through the A345 here at Enford. We have been told that we are making a difference, other than checking the speed of vehicles we have observed some very appalling driving behaviour. We are still awaiting for the Police to set a date for another training session for those have put their names forward volunteering for the scheme. Hang in there please we do need your support and will press the Police for the next training session. As stated in our last report we are hoping to extend the "Speed watch" to Long Street Enfords 30mph zone. The promised "Metro Loop" has been deployed near Littlecott Cottages at the north end of the 30mph zone. Once we have the results back after the 7 day duration period we will be informed by the Police if the results warrant the speed watch scheme being allowed to operate in Long Street Enford. I am hopeful that we will get the opportunity to do this.

The Swan Accident

The Parish Council are still awaiting a reply from Wiltshire Police regarding their request for a copy of "The Stopping Officers" report.

The A342 Upavon Bridge Closure.

The bridge repairs have now commenced and we are awaiting to see what extra problems this will have for the C32 regarding extra through traffic. East Chisenbury residents please contact me if there any problems arise.

Coombe and East Chisenbury.

The Parish Council will be replacing the Parish Notice board at Coombe. We are at present awaiting the wall of Mr and Mrs. P. Wilkinsons property to be repaired before installation. We thank Mr and Mrs Wilkinson for allowing the Parish to fix the notice board to their wall. At the time of replacing this notice board the notice boards in Enford and East Chisenbury will be treated and painted. At a Highways meeting at Lockeridge this May we were informed by Wiltshire Council that street furniture like roadside railings are THEIR responsibility . We have again put in a request for the dilapidated railings at East Chisenbury to be painted "Brilliant White". If Wiltshire Council fails to do the job. We have the Technology and the manpower, so the Parish Council will do the job and after completion we will send them an Invoice for "JOB DONE".

Road Signage.

We have put a request in for 30mph signs to be positioned at both ends of Enford Hill and also a 30mph sign to be positioned at the entrance to Water Lane from Long Street.

By the time you read this report some of you will be aware that Bill Vergette our Parish Clerk suffered a heart attack recently. He was whisked off to Salisbury Hospital and finally ended up in Southampton General Hospital. I understand that Bill is now on the mend. Bill does an excellent job for us here in Enford Parish and I am sure that I can speak for all of the Enford Parish Councillors and the residents of Enford to say Thanks Bill and Get Well Soon.

Safe motoring to all

Stan. W. A. Bagwell. Enford Parish Council. (Highways)
14/6/09

REPORTING OF INCIDENT TO THE MOD

During May 2009, Salisbury Plain Training Area was host to the largest armoured exercise for three years. About 2000hrs, Sat 23 May 09, it was brought to my attention that between 1830 and 1845hrs, an MOD tracked vehicle had been seen driving, albeit very slowly and cautiously, along the C32 road. (MOD vehicles of one ton and over are not permitted on this particular highway). Subsequent checks established that this vehicle had entered the C32 from a Public Bridleway. (Out of Bounds to all forms of mechanically propelled vehicles)

No details were recorded, thus the vehicle in this case was not identified, but after discussion with the MOD, it was agreed that this was, on the balance of probability, a navigational error, and not a deliberate act.

If such an incident is witnessed, please make every attempt to record the vehicle registration number, or if not possible, any other distinguishing marks/numbers. These details, together with the place, date and time of incident, plus your own name and telephone number should be reported to the HQSPTA Duty Officer/Ops Room on 01980 620819. This will assist the MOD to deal with the incident immediately.

These guidelines relate equally to Military vehicles of all nationalities.

Enford Parish Council, Stan Bagwell for Highways, and myself, Norman Beardsley, for Public Rights of Way, are also interested in such incidents.

Norman Beardsley
Enford PC POW Rep

01980 670860.

ALL SAINTS ENFORD CHURCH

Letter for the Month of July from our Vicar Colin Fox



Dear Friends

There is something very humbling about baptising a baby – the fact of holding such a fragile being and thinking of all the potential wrapped up in that bundle of beauty. I was moved by an account of another baptism.

A family brought their younger child, a little girl, to be baptised. When it came for the baptism the family went forward including a happy little three year old brother. When the service was over the vicar stood in the centre of the church to welcome the child into the family of the church. At that point the three year old exclaimed in a loud voice to an elderly man sitting and smiling happily, 'Would you like to touch our baby?'

'I would', said the old man.

So the vicar held the baby out for the man to touch.

The man was so pleased that the little boy said, 'Maybe someone else would like to touch her'.

So the vicar walked down the aisle and everyone reached out and touched the baby.

'Now', said the vicar, 'those of you who have touched the baby should pass that loving touch to others around you, to your neighbours back home and to those you meet day by day for the church exists for the double purpose of gathering and sending out.

I hope as many of you have a restful and happy holiday when it comes.

Colin Fox

DATES FOR YOUR DIARY FROM COLIN FOX



Day	Date	Time	Event	Venue	Notes/More details
Friday	10 th July	8.00 pm	Dinner Dance	F'dean VH	
Sat	11 th July	10.00 am	Flower Festival	Bulford Church	597308
Sat	11 th July	5.00 pm	Songs of Praise	Bulford Church	
Sat	11 th July	2.00 pm	Fete	Brigmerston	
Sunday	12 th July	1.00 pm	Village Fayre	F'dean	
Sat	18 th July		Information Day	Dur'gton Playing Field	
Friday	31 st July	7.30 pm	Concert	Fittleton Church	670134
Sat	12 th Sept	10.00 am	Ride or Stride		Wilts Historic Churches
Sat	19 th Sept	1.00 pm	Church Fete	N'avon Vicarage	670755/670277
Sat	26 th Sept	2.00 pm	Church Fete	Church House F'dean	670296
Sat	17 th Oct	10.00 am	Fair Trade Fayre	Dur'gton VH	670782
Friday	27 th Nov	3.30 pm	Christmas Market	N'avon Church	670326
Sat	5 th Dec	1.00 pm	Christmas Fayre	Bulford Church	633285
Friday-Sunday	11 th - 13 th Dec		Christmas Tree Festival	Dur'gton	653953



ALL SAINTS ENFORD CHURCH**CHURCH SERVICES**

5 th July	09.00	Holy Communion
12 th July	10.30	Benefice Service Netheravon
19 th July	1030	Family Communion
26 th July	1800	Evensong

**CHURCH CLEANING ROTA****July**

3 rd July	Tessa Manser
10 th July	Gai Rickett & Lowenna Harbottle
17 th July	Lyn Rich & Fanny Middleton
24 th July	Jean Kierney & Helen Hadfield
31 st July	Sue Poole – Warren & Hilary Horsford

August

7 th August	Amanda Marx & Paula de Chalus
14 th August	Sarah Campbell
21 st August	Tessa Manser
28 th August	Gai Rickett & Lowenna Harbottle

All Saints Church, Netheravon

Fete at The Vicarage

Saturday 19th September

1.00 pm - 3.30 pm

All the usual stalls! BBQ, cakes, raffle, bottle stall, children's games and hopefully a beer tent

Time to start making jam and chutney for our Home Produce stall!

Donations of Bric a Brac, books, DVDs will be gratefully received
Time for a clear out! Deliver to The Vicarage any time after 1st September

**CHRISTIAN AID WEEK 2009**

Thank you to all in the Enford area who gave so generously during the recent Christian Aid Appeal Week. You will be interested to know that the amount collected was £700. Approximately £100 will also be added to the total through people using the 'Gift Aid' donation scheme.

Sincere thanks are also due to the loyal team of collectors who willingly gave up their time to help with this worthy cause.

We're looking for more people to help out in 2010 by joining our team. If you would be interested in helping with next year's collections, please let me know on 01980 671494.

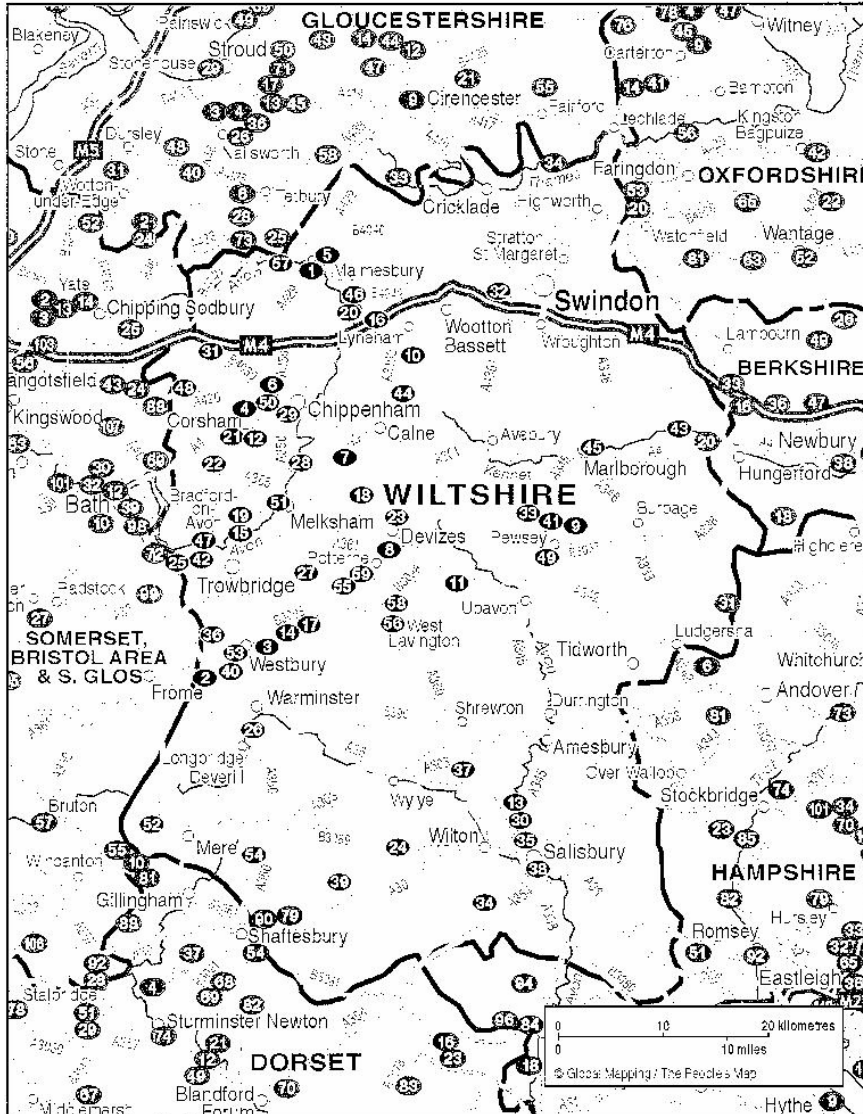
Thanks

Mary Burdick

THE NATIONAL GARDENS SCHEME

Gardens Open For Charity

WILTSHIRE



This information is taken from ngs Gardens open for charity

You can find further information at www.ngs.org.uk

The Newsletter accepts no responsibility for any changes made since the leaflet was printed



Patron: HRH The Prince of Wales

The National Gardens Scheme was founded in 1927 and raises funds by opening gardens to the public throughout England & Wales.

Date	Garden	No		
Wed 1 st July (11.00-5.00)	Sharcott Manor, Nr Pewsey	49	01672 563485	Adm £3, chd free teas
Fri 10 th July (2.00-5.30)	Windmill Cottage	58	01380 813527	Adm £2.50, chd free
Sat 11 th July (12.00 -5.30)	Barter's Nurseries (open all year round)	2	01373 832512	Adm £3, chd free
Fri 24 th July (2.00-5.30)	Windmill Cottage	58	01380 813527	Adm £2.50, chd free
Sun 26 th July (1.00- 5.30)	130 Ladyfield Road and Hungerdown Allotments	29	Not Known	Adm £2.50, chd free

**MESSAGES
FOR FRIENDS
AND
NEIGHBOURS**

**We would like to wish
a very warm welcome
to all who have recently moved
into the Parish of Enford.
We hope that
you will find
many new friends and
neighbours**



GET WELL

Get well to Tony Lock.
We wish you a speedy recovery
All our Love
Stan and Pauline

THANKYOU

Thank you for everyone's kind
thoughts and messages following the
death of my dear husband, Les

Lynne Stevens

THANKYOU

Thank you and well done, Louis of New Buildings
For the speedy action you took in reporting the cattle being
loose from the field behind New Buildings.
Your quick action certainly prevented a possible
accident on the 345.
You are a star, Louis, and we thank you for that
Stan Bagwell (EPC Highways)

GET WELL

Get well to Gay Monk
We hope you are soon back home again
with your lovely cats

GET WELL

Get well to Phyllis Elkins

CONGRATULATIONS

to
Claire and Ian Hunter
on their recent marriage

CONDOLENCES

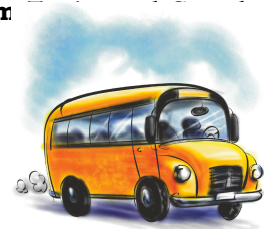
to
Chris Young
of East Chisenbury
on the sad loss of his wife

UPAVON GOOD COMPANIONS

Anyone over 50 is welcome to join the Upavon Good Companions
**The next outing is on Wednesday 22nd July to Bitton, Avon Valley Steam
Boat Ride.**

Non-members are welcome to help fill the coach

For further details please telephone
630436 or 630408



The Book Club

The Book Club meets once
every two months to exchange
opinions
and review books that
members have recommended.
An excuse to meet over a glass of
wine!!

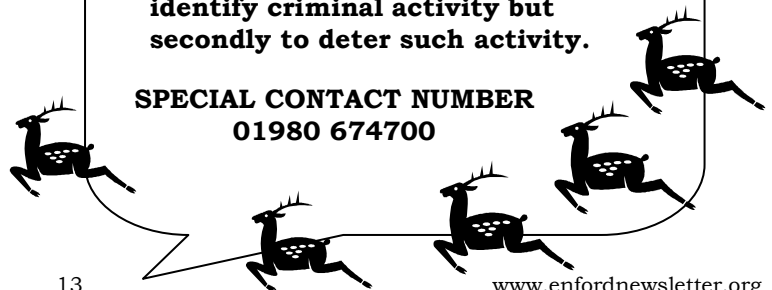


Anyone interested,
please ring Vic on 01980 670928

PLAINWATCH

**PLAINWATCH is specifically designed
to rapidly identify suspicious activity
on the Plain: firstly and principally to
identify criminal activity but
secondly to deter such activity.**

**SPECIAL CONTACT NUMBER
01980 674700**



News from Pewsey Children's Centre



A SureStart Children's Centre

Toy Library Dates

Tuesday 7th July - Pewsey
Tuesday 21st July - Rushall (Scrapstore)
Tuesday 28th July - Figcheldean

Do you know Pewsey Children's Centre holds a monthly activity session for you and your children aged 0-5 in Netheravon? On Monday 20th July come along for a Multi Skills Morning – (lots of fun and sporty games!) and on Monday 17th August there will be a Drumming Workshop (brilliant fun and lots of noise!). Both these events are FREE and held in the Phoenix Hall, Netheravon between 10.30 and 12.00. Come along with your children for a fun morning and meet the Children's Centre staff and see how we may be able to help you! We are visiting Upavon Village Hall on Tuesday 14th July, again from 10.30 till 12.00, with an Activity and Information Drop-In so come and see us there too.

The Children's Centre runs a Mobile Toy Library taking toys out to villages on a monthly basis than you can hire – also a great opportunity to meet other families. We are holding a one-off session in Enford Village Hall on Tuesday, 18th August from 10.30 until 12.30, so call in and find out all about us! We are also hoping to come to Netheravon soon, so watch this space!

There are many other groups and activities in the Pewsey Community Area, please ring the Children's Centre on (01672) 564140 to find out more – and don't forget that if you're a parent of an under 5 you can receive a FREE goody bag for registering with us – **telephone (01672) 564140** to find out more, we would love to hear from you!

CONCERT

IN AID OF THE CHURCH'S FABRIC FUND

ORLANDO JOPLING PLAYS BACH CELLO SUITES

All Saints Church Fittleton

Friday 31st July 2009

at 7.30pm

Tickets in advance

£12.00

From

Elisabeth Young,

River Cottage,

Fittleton,

SP4 9QA

Telephone

01980 670134

**I LOVE THIS DOCTOR**

Q: Doctor, I've heard that cardiovascular exercise can prolong life. Is this true?

A: Your heart is only good for so many beats, and that's it... don't waste them on exercise. Everything wears out eventually. Speeding up your heart will not make you live longer; that's like saying you can extend the life of your car by driving it faster. Want to live longer? Take a nap.

Q: Should I cut down on meat and eat more fruits and vegetables?

A: You must grasp logistical efficiencies. What does a cow eat? Hay and corn. And what are these? Vegetables. So a steak is nothing more than an efficient mechanism of delivering vegetables to your system. Need grain? Eat chicken. Beef is also a good source of field grass (green leafy vegetable). And a pork chop can give you 100% of your recommended daily allowance of vegetable products.

Q: Should I reduce my alcohol intake?

A: No, not at all. Wine is made from fruit. Brandy is distilled wine. That means they take the water out of the fruity bit so you get even more of the goodness that way. Beer is also made out of grain. Bottoms up!

Q: How can I calculate my body/fat ratio?

A: Well, if you have a body and you have fat, your ratio is one to one. If you have two bodies, your ratio is two to one, etc.

Q: What are some of the advantages of participating in a regular exercise program?

A: Can't think of a single one, sorry. My philosophy is: No pain...Good!

Q: Aren't fried foods bad for you?

A: YOU'RE NOT LISTENING!!! Foods are fried these days in vegetable oil. In fact, they're permeated in it. How could getting more vegetables be bad for you?

Q: Will sit-ups help prevent me from getting a little soft around the middle?

A: Definitely not! When you exercise a muscle, it gets bigger. You should only be doing sit-ups if you want a bigger stomach.

Q: Is chocolate bad for me?

A: Are you crazy? HELLO - Cocoa beans! Another vegetable!!! It's the best feel-good food around!

Q: Is swimming good for your figure?

A: If swimming is good for your figure, explain whales to me.



Q: Is getting in-shape important for my lifestyle?

A: Hey! 'Round' is a shape!

Well, I hope this has cleared up any misconceptions you may have had about food and diets.

And remember:

'Life should NOT be a journey to the grave with the intention of arriving safely in an attractive and well preserved body, but rather to skid in sideways - Chardonnay in one hand - chocolate in the other - body thoroughly used up, totally worn out and screaming 'WOO HOO, What a Ride'

AND.....

For those of you who watch what you eat, here's the final word on nutrition and health. It's a relief to know the truth after all those conflicting nutritional studies.

1. The Japanese eat very little fat and suffer fewer heart attacks than Australians.
2. The Mexicans eat a lot of fat and suffer fewer heart attacks than Australians.
3. The Chinese drink very little red wine and suffer fewer heart attacks than Australians.
4. The Italians drink a lot of red wine and suffer fewer heart attacks than Australians.
5. The Germans drink a lot of beers and eat lots of sausages and fats and suffer fewer heart attacks than Australians.

**CONCLUSION**

Eat and drink what you like. Speaking English is apparently what kills you.

ENFORD VILLAGE HALL**ENFORD RECREATION GROUND & VILLAGE HALL TRUST****SCALE OF CHARGES – JUNE 2009**

(Locals / Regulars' Rates)

Charity No. 305512

BOOKING OFFICER: TEL: 01980-670501

Email: enfordvillagehall@btinternet.com

Function Rate

including

Crockery &

Cutlery

(see 3 below)

	Hourly Rate (see 1 below)	Session Rate (see 2 below)	Function Rate (see 3 below)	Function Rate including Crockery & Cutlery (see 3 below)
a) Main Hall, Conference Room	10.00			
b) Conference Room, Kitchen	10.00	25.00		
c) Main Hall, Conference Room, Kitchen	12.00	30.00	95.00	145.00
d) Exclusive Use of Whole Building	15.00	40.00	110.00	160.00
e) Pitch & Changing Rooms				
i) Adult		20.00		
ii) Youth		17.00		
f) Full day rate - Exclusive Use Of Whole Building - 0800-2330			150.00	200.00

NOTE: Rates include Electricity, Heating & Hot Water but NOT the cost of Temporary Event Notices. Please check with the Booking Officer who will advise you if your event requires a T.E.N. and how to apply.

1. Hourly rates apply to bookings by local residents, regular bookings by organisations for the purposes of ordinary meetings and/or activities attended by their members, regular bookings for classes (educational or physical). Rate includes 15 minutes setting-up/clear-down time.

2. The Session rate applies to childrens' parties (up to 13 years); morning/afternoon/evening activities open to the public (i.e. NOT private parties).

Morning: 0830 -1230 hrs

Afternoon: 1330 - 1800 hrs

Evening: 1830 – 2330 hrs

3. The Function rate applies to all bookings not covered by (1) or (2). IT IS A CONDITION OF BOOKING THAT THE BOOKINGS OFFICER IS ADVISED IF THE FINISH TIME IS LATER THAN 2330 HOURS. LATE SESSIONS ARE AT THE DISCRETION OF THE BOOKING OFFICER / MANAGEMENT COMMITTEE. There is white china crockery and cutlery and other equipment for up to 120 people

NOTE: A DEPOSIT OF £50 IS REQUIRED AT THE TIME OF BOOKING OF ANY FUNCTION WHICH INCLUDES THE USE OF HALL EQUIPMENT AND/OR THE SERVING OF FOOD OR DRINKS

CANCELLATIONS: Cancellations made less than 4 weeks before the booking of a function on a Friday evening or anytime Saturday will be charged at the FULL cost of the booking.

Cancellations made less than 1 week before the booking of any session from Sunday morning through to Friday afternoon will be charged at the Full cost of the booking.

ALL BOOKINGS ARE SUBJECT TO THE "CONDITIONS OF HIRE" AND IT IS THE RESPONSIBILITY OF THE HIRER TO ENSURE THAT THEY ARE FAMILIAR WITH THESE CONDITIONS. THE FULL VERSION OF THE "CONDITIONS OF HIRE" IS AVAILABLE ON THE NEWSLETTER WEBSITE (WWW.ENFORDNEWSLETTER.ORG), IN THE VILLAGE HALL OR ON REQUEST.

Hire of Chairs for External Use: £5.00 per day for 10 or part of 10

Hire of Tables for External Use: £2.00 per day per table



**SALISBURY PLAIN TRAINING AREA
NEWS SHEET
July 2009**



This forecast shows our planned training. Unfortunately operational requirements mean that dates and times can change. The warning flags and signs show the actual range danger areas on a given day. Late night firing times Tues, Thurs and Sat March to October 2330hrs and November to February 2100hrs inclusive.

Any general comment about military training should normally be made through Parish Councils to the Liaison Officer nominated by the appropriate Garrison Headquarters. Any specific complaint should be made in writing or if urgent by telephone as shown below:

**HEADQUARTERS SALISBURY PLAIN TRAINING AREA
Westdown Camp, Tilshead, Salisbury, Wiltshire SP3 4RS**

Telephone: Stonehenge (01980) – 620819

TRAINING: Activity on the Plain in July will be largely confined to an Afghan pre-deployment exercise for 11 Light Brigade who are due to deploy in October. This exercise will be one of the largest, in terms of troop numbers, we have ever seen but, because it requires exclusive use of all areas from 11th - 23rd July, all other activity will be precluded and, apart from some artillery firing and air activity there should be no disruption to the adjoining parishes.

Other activity during the month involves the final stages of a TESEX on 1st/2nd and an armoured manoeuvre exercise from 6th - 9th July

ARTILLERY LIVE FIRING FROM SALISBURY PLAIN (WEST) (AS90)	8, 9, AS90, 14
LATE FIRING DAYS ON SALISBURY PLAIN (WEST) (AS90)	9, AS90
ANTI TANK FIRING DAYS ON SALIBURY PLAIN (WEST):	NIL
ARTILLERY LIVE FIRING DAYS FROM AREAS 6, 7 & 8	7, 8, 9, 10, AS90
ARTILLERY FIRING FROM SALISBURY PLAIN (EAST)	NIL
LATE FIRING FROM SALISBURY PLAIN (EAST)	NIL
LATE FIRING DAYS LARKHILL/WESTDOWN RANGES	2, 7, 9, 14, 16, 18, 21, 23, 28, 30
NON FIRING DAYS LARKHILL/WESTDOWN DANGER AREA	4, 5, 11, 12, 25, 26
NON FIRING DAYS BULFORD RANGES	6 - 27 inclusive
NON FIRING DAYS ON WARMINSTER RANGES	4, 5, 11, 12, 25, 26

NOTE: Due to unforeseen changes there is always a possibility that there could be firing on other of the days listed. This is particularly so now operational training is being conducted to meet many and varied exigencies. The public should be careful to check that Red Flags are not flying before they enter the range. It is the time of the year when we change late night firing times. From March through to October the Tue, Thurs and Sat night firing times will revert back to 2330hrs.



HELICOPTER NIGHT FLYING : Night flying normally takes place Mondays to Thursdays inclusive over parts of SPTA. Some aircraft will show no lights but all will operate under strict area control.

AIR ACTIVITIES : Dates and timings given below are those listed at the time of printing but may be altered due to aircraft serviceability or weather conditions.

AIRCRAFT TRIALS:

Aircraft may conduct trials over Larkhill Range on each Wed and Fri from 1200 - 1700 hrs which could involve circuits to the East crossing the Avon Valley.

PARACHUTING. : Parachute dropping is scheduled to take place on EVERLEIGH and FOX COVERT DZs during normal working hours on most weekdays. Outside working hours and at weekends the dates and approximate times are:

FOX COVERT DZ (C130)

7 - 0600 - 0600
10 - 0600 - 0600
11 - 0600 - 0600
12 - 0600 - 1800

13 - 24 - 0600 - 0600 DAILY MRX
28 - 31 - 0600 - 0600 DAILY

PARACHUTING**IMBER DZ (C130)**

15 - 24 - 0600 - 0600 DAILY MRX

EVERLEIGH DZ (C130)

2 - 1200 - 0600
3 - 0600 - 0600
4 - 0600 - 0600
5 - 0600 - 0600

13 - 24 - 0600 - 0600 DAILY MRX
25 - 26 - 0600 - 0600 DAILY

DEPTFORD DOWN (C130)

7 - 1200 - 2000
8 - 1800 - 0100
11 - 0600 - 1800
12 - 0600 - 1600

13 - 24 - 0600 - 0600 DAILY MRX

STRIP LANDINGS**UPAVON (C130)**

13 - 24 - 0600 - 0600 MRX

KEEVIL

NIL KNOWN

SPTA 'W'

1 - 2 - 0800 - 2330 DAILY (WESSEX WARRIOR)
15 - 22 - 0800 - 2330 DAILY MRX
23 - 0800 - 1500 MRX

FAST JET ACTIVITY (FGA)**SPTA 'E'**

15 - 22 - 0800 - 2330 DAILY MRX
23 - 0800 - 1500 MRX

SPTA 'C'

15 - 20 - 0800 - 2330 DAILY MRX
23 - 0800 - 1500 MRX

MINISTRY OF DEFENCE - DTE SP (WEST) IMBER RANGES

Notice is given that only the roads from:

- a. Warminster to Gore Cross via Imber, and
- b. Bratton to Heytesbury via Imber

will be open to the public from 0800 hours (8am) Sunday 16th August 2009 through to 18.00 hours (6pm) Sunday 6th September 2009

Please bear in mind that **ONLY METALLED ROADS** will be opened, **all other tracks, stone tracks and Southern Range Road and IMBER VILLAGE remain closed (Out of Bounds)** in accordance with the Imber Ranges Bylaws. Any movement off the aforesaid roads on the Imber Ranges is forbidden, trespassers are liable to prosecution.

Red Flags are only flown at the vedette post when live firing is taking place on the ranges. The absence of red flags does NOT imply that the roads are automatically opened to the public, times for which are notified in the Press and displayed on the entrance notice boards.

The roads identified above are not maintained to public road standards, if traversing the training area drivers should do so with extreme caution.



We hope the traditional Imber Church Service will be held at 1500 hours on Saturday 19th September 2009, this of course is subject to change, if this is the case any changes will be in the next (August) Newsletter.

PLAINWATCH NUMBER 01980 674700

PLAINWATCH is specifically designed to rapidly identify suspicious activity on the Plain: firstly and principally to identify criminal activity but secondly to deter such activity.

We seek the support of those Parishioners who regularly use the Plain for recreational purposes, who when doing so spot what could be termed suspicious or even criminal activity taking place. No approach or contact should be made with potential offenders. If such an opportunity occurs we would be pleased to hear from you via a special telephone number which we have set up within our 24 hour Operations Cell: **01980 674700**. We would welcome your assistance in making the Plain more secure and a safe place to enjoy.

POLICE WARNING

THIEVES OPERATE ON THE TRAINING AREA

SECURE YOUR VEHICLES AND EQUIPMENT
AT **ALL** TIMES

11 BRIGADE MISSION REHEARSAL EXERCISE (MRX) 13 – 24 JULY 2009

A major training exercise involving 11 Light Brigade is to take place during the period 13 Jul – 24 Jul 2009. The majority of activity will be centred on the Salisbury plain and Sennybridge training areas, as well as the military facilities at Caerwent, although troops and equipment from a number of bases across the country will be taking part.

The exercise will be undertaken at Brigade level under the command and control of HQ 6 (UK) Division. It will involve a large number of Army units, as well as some RAF units. The exercise will focus on the Brigade HQ. The exercise will form the basis upon which GOC 6 (UK) Division will validate 11 Light Brigade HQ in order for it to be prepared for possible deployments.

The exercise will involve up to 4000 soldiers from 11 Light Brigade as well as some 400 wheeled vehicles and tracked vehicles. 6 AH 64 Apache, 2 Lynx, 2 Gazelle, 2 Sea King, 2 Merlin and 4 CH47 Chinook helicopters will be participating, as well as a small number of Fast Jets, along with 2 Air Transport C130 Hercules aircraft. Ground troops and vehicles are being deployed from unit base locations to military training areas.

The exercise is in 4 phases:

Phase 1 – Deployment. Deployment of force from home bases across the UK to Salisbury Plain, Sennybridge and Caerwent.

Phase 2 – Command Post Exercise (CPX). Simulated troop activity.

Phase 3 – Field Training Activity (FTX). Deployed troop activity.

Phase 4 – Completion and return to home bases.

Details of the low flying aspects of the exercise will also be posted on the website:

www.mod.uk/issues/lowflying.

As usual with an exercise of this size, we have established a telephone number to deal with any queries or complaints the Brigade Media Officer can be contacted on 07795 684903.

Activity, including low flying, will be restricted to that strictly necessary to meet the exercise objectives and every effort will be made to avoid over-flying in sensitive and built up areas. Whilst everything possible will be done to keep to the published exercise plan, we feel sure you will understand that inclement weather may necessitate slippage of dates and changes of venue. The exercise planners have, however, made every effort to keep late night, early morning and weekend activity to the absolute minimum.



More Than 80 Wiltshire Walks To Download And Print FREE!

<http://www.walkinginwiltshire.org.uk> gives you all the information you need for the best walking in the County. Details of more than 80 walks to download and print free.



WILTSHIRE LINK SCHEMES



In a period of declining rural services, seeing the closure of many post offices and changes to the provision of Health services, many older people are being adversely affected and suffering as a result.

Link schemes are volunteer run groups, based in local communities that offer help with transport and good neighbour tasks such as collecting prescriptions, shopping and calling in for a chat. These valuable schemes provide a service which enables many people to remain living independently in their own homes and maintain some quality of life and dignity.

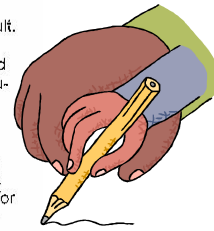
During this difficult period the Link schemes have seen a steady increase in the amount of requests for help and transport from those most vulnerable in our communities. Every week over 900 people, mainly our older residents, are helped to do those things which most of us take for granted. Indeed for many clients the friendly voice and face of a Link volunteer is often the only social contact they may have with their community. Requests for good neighbour help and transport assistance range from helping to change a light bulb to getting to the hospital for an out-patient appointment but regularly include:

- Getting to medical appointments
- Help shopping for food
- Reading requests
- Transport to luncheon clubs and other social events

Each of the 1400 volunteers (approx) throughout Wiltshire make a small contribution which improves the lives of many clients. Existing volunteers get a great deal of pleasure from their work with Link and new volunteers are always welcome. As well as being looked after, appreciated and supported Link volunteers:

- Are reimbursed their expenses
- Decide their own availability and interests
- Achieve an enormous sense of well-being and community spirit
- Make new friends
- Keep active
- Feel valued

Your support, publicity and encouragement of your local Link scheme is welcomed. If you have any questions or comments about either your local Link scheme or the Countywide support organization, The Link Project, then please contact us on: 01380 722241



**COMMUNITY
FIRST**

Wiltshire Community First

wiltlink.org.uk

BUS SERVICES

SERVICE 210 ENFORD TO DEVIZES THURSDAYS AND SATURDAYS

OUT

Enford Bus Shelter	09:31
Enford Corner	09:34
East Chisenbury	09:38
Upavon Avon Square	09:42
Upavon, Ship Inn	09:45
Devizes Market Place	10:24

RETURN

Devizes Market Place	12:30
Upavon, Ship Inn	13:07
Upavon Avon Square	13:10
East Chisenbury	13:13
Enford Corner	13:17
Enford Bus Shelter	13:18



Please Note!

**Return Fares from Enford, East Chisenbury or Upavon to Devizes
£6.00 Adult, £2.25 Child.**

**With a valid Wiltshire Fare pass anyone over 60
can now travel FREE ! (instead of half-fare) on this service.**

Advertising

For just a few pounds you can place
an advertisement
in the Enford Newsletter.

£15 per small square for 10 issues

£30 per half page for 10 issues

£5.00 per half page (1 issue)

£10.00 per page (1 issue)

Please contact Peggy Waterkeyn 01980 670418

Avon Valley Chauffeur Service

- ❖ Airports & stations
- ❖ Hotels & restaurants
- ❖ Schools & colleges
- ❖ Business appointments
- ❖ Hospitals & doctors
- ❖ Special occasions



avc@avonvalleychauffeurs.co.uk

01980 630094

Pet Care Services

*Pet Sitting
Home Sitting
Pet Taxi
Dog Walking*

Mobile Pet Grooming

*Warm Water Hydrobath
Full Grooming
Nail Clipping*

Comfy Critters

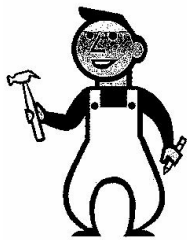
Established in February 2005 and based from our own village of Enford, Comfy Critters aims to bring piece of mind to pet owners in our rural communities

Mob: 07789 378413

Tel: 01980 670458

www.comfycritters.co.uk

Member of National
Association of Pet
Sitters



MIKE TAYLOR

CARPENTER

ROOFING

KITCHEN FITTING

CERAMIC TILING

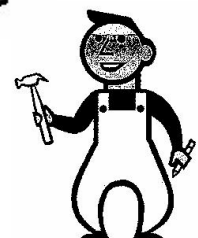
GENERAL BUILDING

PATIOS

FENCING

ENQUIRIES WELCOME with regard to all aspects of construction and maintenance

Please ring 01980 670969 or 07543834684



iT SOLUTIONS

Tel: 07867 988140
www.ManageIT.info

Your local computer and internet experts friendly, professional & affordable advice for home & small business users

Do you need help with ...

Internet, Broadband & Wireless connection problems?
 Database management?
 Linking various computers together?
 Converting to / from Mac?
 Tailor-made systems?
 Just getting your computer to do what you want it to?

Help is at hand – just telephone now!

BEAUTY THERAPY • AROMATHERAPY
 REFLEXOLOGY • INDIAN HEAD MASSAGE
 Facials • Manicures • Pedicures
 Massage • Waxing
 Bridal Makeup

Gift
Vouchers
available



Make-up
Advice &
Lessons

Jennie Aird Gauntlett
 ITEC BAPTAC MIFHB MIGHT IHHT

A full complement of beauty treatments for Face and Body
 To make an appointment call 01672 851445

“ 14 years in the area ”

**For just a few pounds you can place
 an advertisement
 in the Enford Newsletter.**

£15 per small square for 10 issues

£30 per half page for 10 issues

£5.00 per half page (1 issue)

£10.00 per page (1 issue)

Please contact Peggy Waterkeyn 01980 670418

D Taylor

**Building Services
 Bricklayer & General Builder**

**All Building Works undertaken
 Including Extensions, Garden Walls, Patios,
 Roof Repairs, Plastering
 Floor & Wall Tiling etc**

**01980 671078
 Mobile No: 07719916854**

Carpet Clean

Ricky Flint

Est 1997

Friendly Local Service

Carpetclean@btinternet.com

Great Bedwyn 07799 215837

The Swan Inn at Enford

Open for Lunch and Dinner every day

**Try our Quiz Night every Tuesday! Starts 9.30pm £1.00 entry per person
(teams of up to 4)**

Great for Sunday Lunch

A choice of Roast Sirloin of Beef, Leg of Lamb or Loin of Pork

Plus



Specials every Sunday

Outside Catering can also be arranged on request

Call Clare or Paul on 01980 670338 to book

Email: Pauljacson5@btconnect.com

Full Menus on our website: home2btconnect.com/theswaninnatenford.co.uk

M NASH & P WILKINS

ALL LANDSCAPING WORK UNDERTAKEN
FENCING*PATIOS*PATHS*PONDS*
BRICKWORK
HEDGE CUTTING*GARDEN CLEARANCE
GRASS CUTTING

Tel: MIKE 01380 840767
Mobile: 07977 950654

Tel: PAUL 01380 840763
Mobile: 07970 557002

CAN I HELP?

CONSERVATORY CLEANING, WINDOW CLEANING AND GENERAL MAINTENANCE

Has your conservatory lost its new shiny look, windows impossible to clean then, CAN I HELP could be the solution

As well as normal window cleaning service, other things undertaken include painting and decorating, brickwork and carpentry.

In fact any task in the home and garden.

Man and Van service also available.

All work is guaranteed.

For a free quote and written estimate if requested contact

Contact Peter 07875 238730

*MODERN & TRADITIONALLY
DESIGNED MEMORIALS*

M J SLY

Monumental Stonemason

*New Memorials, Additional Inscriptions
Restorations, Free Home Visits
Free Brochure*

Marlborough (01672) 516797

Email: martin@mjsly.co.uk

Website: www.mjsly.co.uk

*Workshop & Showroom at Pelham Court,
London Road,
Marlborough, Wiltshire*

ELSTON VETERINARY CLINIC

ELSTON LANE, SHREWTON

Dr. Enid Frantilla, DVM MRCVS

Small Animal Medicine and Surgery

*Providing high quality pet healthcare
and a caring, friendly professional service
HELPING YOU TO HELP YOUR PETS!!*

Consultations by appointment, Mon-Sat

*For appointments or enquiries, and
24 HOUR EMERGENCY SERVICE*

01980 621999

ROD SMITH

The Garage

Netheravon

UNIPART CAR CARE CENTRE

MOT Tests

Car Repairs & Servicing

Now able to service air conditioning units

Batteries, Exhausts & Tyres at Competitive Prices

Handy Gas

Tel: Stonehenge (01980) 670348

AGRICENTRE

*Now stocking Frontline for cats and dogs
at an unrivalled price*

*Excellent products at an excellent price from
well-known horse wormers*

Electrical fencing

Complete range of Briswim pool chemicals

FREE HOME DELIVERY!

*Contact: Justin Young, A.M.T.R.A., SQP
(Branch Manger)*

07850 184111

01722 320316



*******B J LONG*******

(**AKA BERTIE**)

Live music from the 1950s 60s 70s

FOR BOOKINGS

01980 670767

0772 4104106

E-Mail: bjlong@hotmail.co.uk

Redmayne-Bentley Stockbrokers

REDMAYNE
BENTLEY
STOCKBROKERS

Your friend on the Stock Exchange

To discuss how we can help, please contact either
Hugh Lancaster or Gerald Lowes

Telephone: 01488 686400

Email: Hungerford@redmayne.co.uk

Visit: www.redmayne.co.uk/hungerford

BEST ADVISORY BROKER
INVESTORS INVESTMENT
CHRONICLE AWARDS 2008
SILVER AWARD



2003-2007: BEST ADVISORY BROKER

VAT No: GB 613 139 763. Members of the London Stock Exchange
Authorised and Regulated by the Financial Services Authority

*WORRIED ABOUT INLAND REVENUE
SELF-ASSESSMENT?*

*Why not talk to a commercially-experienced
Chartered Accountant? Local help is at hand.*

MERPEN ACCOUNTING

*Accountancy & Small Business Advisory
Management*

**Hands-on help *No job too small *Even part-time,
money-making hobbies *Initial discussions free of
charge *Further work done professionally for probably
the lowest fees around*

Alan Merrett FCA

Eagle Lodge, East Chisenbury, Pewsey, SN9 6AQ

Tel: 01980 671441

www.pewsey-uk.co.uk/merpen-accounting.html



OIL TANKS



YOUR LOCAL OIL TANK REPLACEMENT SPECIALISTS

S
T
S
SOUTHERN
TANK
SERVICES LTD

- COMPETITIVE PRICES
- DOMESTIC & COMMERCIAL
- FULL REPLACEMENT SERVICE
- FRIENDLY & RELIABLE
- FREE QUOTATIONS

TELEPHONE 01985 248 555

www.tankservices.co.uk Deptford Farm, Wylye, Wiltshire, BA12 0QQ

SUCOL Solutions



Home PC Tuition and Setup
Home Network Setup
Data Storage and Backup
Small Business Server (SBS)
PC and Server Repairs
Network Infrastructure
Design and Installation
CAT5e Cabling
IT Consultancy

Colin Mundy

22 Willow Drive
Durrington
Salisbury
Wiltshire
SP4 8DE

Tel: 01980 594368
Mob: 07989 261778
Email: colin.mundy@ntlworld.com

Bits & Pieces (Durrington Ltd)

BUILDING, GARDENING & DIY

PETS, PANELS, AGGREGATE

**37 - 39 Bulford Road, Durrington
Wiltshire SP4 8DL**

Tel: 01980 655552

Fax: 01980 652351

Proprietors: P & M Conn

DJ Landscaping

**No Job Too Big Or Small
Just call us we do it all**

- Lawn Mowing
- General Tidying
- Hedge Cutting
- Turfing
- Fencing
- Ponds
- Paths
- Brick Works
- Leaf Collection
- Pruning
- Weeding
- Decking
- Patios
- Pergolas
- Driveways

Free estimates, Hourly Rates
Regular appointments are available

Call the company you can trust

Tel: 01980 846740

Mob: 07717 831907

For just a few pounds you can place
an advertisement

in the Enford Newsletter.

£15 per small square for 10 issues

£30 per half page for 10 issues

£5.00 per half page (1 issue)

£10.00 per page (1 issue)

Please contact Peggy Waterkeyn 01980 670418



MOBILE HAIRDRESSER

Ring Donna

on

07711 579403

KD WORSDELL

**Carpentry & Joinery
Building Works & Maintenance
Bathrooms and Kitchens**

Please Call

01980 630545

Or

07759 586162

CHINA RESTORATION

Specialist in Antiques & Figurines

24 Years Experience

Workshops Arranged Throughout The Year

Tel: 01672 851445

Web: crackedpots.co.uk

G. B. Chamberlain
Flooring Specialist

Specialising in Ceramic
Floors and Walls

Tel: 07971 182752

24 hour answer service

OIL FIRED BOILERS

**For prompt reliable –
SERVICING
REPAIRS
COMMISSIONING**

Call Tim Walsh

**Tel. 01980 652803
Mobile 07919603884**

FRED MONRO Contemporary Interiors

**Bespoke carpentry
Made-to-measure kitchens and furniture
Affordable prices
Free quotations**

**Call: 07717 416423
Email: fred@fredmonro.co.uk
www.fredmonro.co.uk**

Made-to-measure kitchens and furniture

RCM

Plumbing & Heating

• Kitchens • Heating systems • Competitive rates • General maintenance • Bathroom shower pumps • New and replacement bathrooms • Tiling • New and replacement cylinders (vented and unvented) • Fully Insured

24 hour callout

Tel: Russell McBride 07758 228 743



B REPAIRED

Musical Instrument Repairers

Graham & Yvonne Ballard
The Music Studio 8 Thurlow Close
Amesbury Nr. Salisbury
Wiltshire SP47QG

01980 625380
07957 806401/2

www.brepaired.co.uk

GRAHAM BUCKLAND SERVICES

*General building maintenance: plumbing,
Carpentry, glazing, brickwork, etc
Free quotes and reasonable rates*

*'Man with a Van' hire.
Removals and House Clearance
Undertaken*

**Tel: 01980 670870
or 07831 889 666**

Cape Cuisine

ONLY THE BEST HOME-COOKED FOOD

*Weddings, Anniversaries, Parties.
Hot or Cold Buffets*

For Quotations Phone:

01980 590808

Carpet & Upholstery Cleaners

Salisbury Amesbury Andover
and surrounding areas

**See our
Website
for latest
offers!**

- * Local reputable company
- * Fast, efficient, no-nonsense service
- * Inclusive fixed price quotations

For your **free**, no obligation quote call: **01980 621621**
enquiries@cleanlivingmcc.com
www.cleanlivingmcc.com

*"It's blue, it's
blue!"*

CLEANLIVING

Specialising in delighted clients

Finalist in two categories at the
Business Excellence Awards 2009

PEST CONTROL SERVICE

*RABBITS, RATS, MOLES
WASPS, SQUIRRELS
BIRD PROOFING*

CALL NIGEL

**01980 670804
07854 828904**

GDB TECHNICAL SERVICES LIMITED

Computer/IT support
Small business and Home users

Networking issues/installations
PC Problems
Tuition
General IT advice/help
Upgrades
Data Recovery
Service Support Options

Call **01980 623052** or visit
www.gdbts.com to see if we can help.

GRAHAM C BROWN & SON**Oil boiler maintenance**

**A well-established, friendly, local
company, operating within the
Salisbury Plain area.**

01980 622737

Yoga, Pilates & Nia classes

Mon 10.00am	Pilates	Rushall Village Hall
Mon 11.15am	Yoga	Rushall Village Hall
Tues 7.30pm	Yoga	Upavon Village Hall
Weds 9.30am	Yoga	Rushall Village Hall
Thurs 9.30am	Nia	Rushall Village Hall

Nia is a dance based fitness programme which promotes strength, stamina, flexibility, stress reduction, co-ordination, weight loss and much more. Nia is a free spirited and fun way to get fit. This is a drop-in class (£5) and is suitable for all levels of fitness.

Yoga and Pilates classes are booked on a termly basis. All classes, including Nia run during Wiltshire Schools term times.

Visit www.fulcrumyoga.co.uk or email debby@fulcrumyoga.co.uk or call Debby Wilkinson on 07505 142285 for further details.

Debby is a British Wheel of Yoga teacher and a course tutor for the British Wheel of Yoga teacher training programme. She also qualified with the Pilates Institute and is a Nia White Belt teacher.

Avon Security

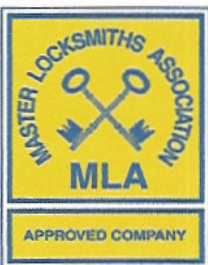
MASTER LOCKSMITHS

Engraving Service Now Available

- > Brass
- > Plastics
- > Aluminium
- > Glass
- > Trophies
- > Gifts

Free Advice & Quotations On Securing Your Property & Belongings

Key Cutting
Locks Supplied & Fitted
Access Control
Safes
PVCu Locks
Master Key Systems
Lock Repairs
Door Furniture & Ironmongery
Transponder Car Keys
Keys To Code
Watch Batteries & Straps
Emergency Call Out Service



01980 626000

21, Salisbury Street, Amesbury, Wiltshire, SP4 7AW

www.avonsecurity.net





WILTON CARPETS

Jon Card

Your local contact for
Your area

- Great Carpets
- Great Choice
- Great Prices

Full Measuring , Estimating
& Guaranteed Fitting

e-mail ; joncard@wiltoncarpets.com

Tel ; 01722 742733

TIM BUCKLAND BOILER MAINTENANCE

FOR SERVICE AND BREAKDOWNS

*Friendly and efficient service
Wide stock of boiler spares in stock*

VERY COMPETITIVE PRICES

Also AGAs and RAYBURNS serviced

Tel: 01980 625846

CAROL G DAYTON

ITEC MGPP IHHT T.A.Th

*Massage Therapist
Indian Head Massage
Reflexology
Skenar Therapy
Reiki
Hopi Ear Candles
Injury Treatment
Waxing and Sugaring*

For further information please call:

**01980 653151
or 07787 513563**

M.W. WALSH



TREE SERVICES

All aspects of tree surgery and hedge
maintenance professionally undertaken

HIGH QUALITY WORK

FULLY INSURED

PERSONAL SERVICE

FREE ESTIMATES

01980 670032

• NO VAT •

*Whether it's a dazzling new colour, new textured or
classic haircut, Louise and Stacie look forward to
helping you achieve your stunning new look. Come
along for your free consultation.*

Appointments not always required.

Tina's Hairdressers

High Street, Netheravon

Open – Tuesday 9-5.30, Wednesday 9-2,
Thursday 1-7, Friday 9-6, Saturday 9.00-2

Closed – Sunday and Monday

Tel: 01980 670628

New Range of Jewellery and Bags For Sale

RGV ENGINEERING (NETHERAVON) Ltd

HIGH STREET

NETHERAVON

01980 670667

Local family business established over 30 years

**SPECIALISTS IN PLUMBING,
HEATING AND ELECTRICAL
BOILER SERVICE AND
COMMISSIONING**

CORGI * OFTEC * NICEIC * ECA

VILLAGE COMMITTEES**PARISH COUNCIL**

Chairman	Ken Monk	670540
Vice Chairman	Tessa Manser	670605
Parish Clerk	Bill Vergette	670132
Councillors	Stan Bagwell	670154
	Norman Beardsley	670860
	Sara Everett	670475
	Michael Fay	670553
	Ann Merrett	671231
	Martin Webb	670537
	Jane Young	670532
	Frank Horsford	
	Adrian Orr	

PARISH HALL

Chairman	Colin Pearse
Vice Chairman	Jacqui Elkins
Treasurer	Margaret Young
Secretary	Katrina Knight

FOOTBALL CLUB

Chairman	Julian Le
Secretary	Julian Lee
Treasurer	Ollie Staggs
1st Team Manager	Julian Lee
2nd Team Manager	Ian Lawes

PAROCHIAL PARISH COUNCIL

Church Wardens	Michael Hadfield John Poole Warren
Treasurer	Jonathan Walsh
Secretary	Sue Poole-Warren
Council Members:	Sarah Campbell Judy D'Arcy-Irvine Bob Hastie Frank Horsford John Manser Alan Merrett Henry Middleton

VILLAGE HALL

Chairman	Judy D'Arcy-Irvine
Vice Chairman	
Treasurer	Alan Merrett
Secretary	Jeni Scott Dalglish (670210)
Parish Council Rep	Jane Young
Parish Hall Rep	Ann Merrett
Football Club Rep	Julien Lee
PCC Rep	Sarah Campbell
Newsletter Rep	Jacqui Elkins
Booking Officer	Judy D'Arcy-Irvine (670501)
Property Officer	David Spencer
Grounds Officer	Hamish Scott Dalglish

CHISENBURY AND ENFORD SHOW

Chairman	In abeyance
Treasurer	

NEWSLETTER COMMITTEE

Chairman	Tanya Becker
Vice Chairman	Linda Mundy
Secretary	Linda Mundy
Treasurer	Linda Mundy
Advertising	Peggy Waterkeyn
Village Hall Rep	Jacqui Elkins
Parish Council Rep	Jane Young Sylvia Latham Ann Houghton Gay Monk Clare Burge

THE VICAR

Rev Colin Fox
The Vicarage,
Netheravon
01980 670326

SCHOOL GOVERNORS

Chairman	Colin Cruikshanks
Clerk	Sally Jones
Enford Rep	Andrew Marx

NEIGHBOURHOOD WATCH COORDINATORS

Area Co-ordinator - Steve Becker (steve@becker.globalnet.co.uk)

Coombe Lane East (30-45)	Jo Crossland
Coombe Lane West (1-17)	
& Fifield	Angie Taylor Terry Mundy
Coombe	Ednah Beardsley Peggy Waterkeyn
New Town	Not Filled
Enford South (LongStreet)	Venessa Murray Hill
Enford Central	
(Enford Hill & Hill Farm Road)	Sarah Campbell
New Buildings	Stan Bagwell
Compton	Bruce & Lucy Waight
West Chisenbury	Derek Ford Rod Mason

East Chisenbury (North)	Stephen Calton
East Chisenbury (Central)	Vicky Orr
East Chisenbury (South)	Barry Chamberlain
Enford North & Littlecott)	Not Filled
Grants Road (North) (14-29)	Ian Teasdale
Paddocks Close	Colin Pearse
Water Lane (East)	
(East from Field View)	Lyn Riche
Water Lane (West) (1-10)	John Powell
Grant's Road (South)	
(1-13, 30-33)	Not Filled

For Your Diary July 2009

1 st	Wednesday	
2 nd	Thursday	Black Bin
3 rd	Friday	Enford & Chisenbury Golf, Upavon Golf Course, 12.00 pm
4 th	Saturday	
5 th	Sunday	Holy Communion, 9.00 am
6 th	Monday	
7 th	Tuesday	Film 'Young Victoria', Village Hall. 7.00pm/Quiz, The Swan Inn, 9.30pm
8 th	Wednesday	
9 th	Thursday	Recycling
10 th	Friday	
11 th	Saturday	
12 th	Sunday	Benefice Service, Netheravon, 1030am
13 th	Monday	
14 th	Tuesday	Quiz, The Swan Inn, 9.30pm
15 th	Wednesday	
16 th	Thursday	
17 th	Friday	
18 th	Saturday	Family Communion, 1030 am
19 th	Sunday	Summer Fete, Netheravon All Saints School, 2.00pm - 4.30pm
20 th	Monday	
21 st	Tuesday	Quiz, The Swan Inn, 9.30pm
22 nd	Wednesday	Newsletter AGM and Committee Meeting, Coombe Lane, 7.30pm
23 rd	Thursday	Recycling
24 th	Friday	
25 th	Saturday	
26 th	Sunday	Evensong, 6.00 pm
27 th	Monday	
28 th	Tuesday	Quiz, The Swan Inn, 9.30pm
29 th	Wednesday	
30 th	Thursday	Black Bin
31 st	Friday	Concert, All Saints Church, Fittleton, 7.30pm