

# ENFORD NEWSLETTER



This Month We Are Celebrating  
The Opening  
Of  
**Enford Village Hall**



**June 2009**

**You can now read the Enford Newsletter in colour  
at**

**[www.enfordnewsletter.org](http://www.enfordnewsletter.org)**

**In addition you will find interesting articles news,  
colour photographs and past Newsletters**

**plus  
useful information and services**

# CONTENTS

# ENFORD NEWSLETTER

Newsletter Website/Envelope Collection/PC Donation/ Thank you/Help Needed	1
Antiques Fair/WCC Notices	2
Film Nights: Slumdog Millionaire/Young Victoria	3
Jazz on a Summer Evening	4
Village Fete & Grand Opening of Village Hall	5
Art & Photography Competition	6
Dog Show/Tug of War	7
Enford & Chisenbury Golf Match	8
A Message for June from our Vicar/Netheravon Churchyard	9
Church Services & Cleaning/Fittleton Concert/Vicarage Fete	10
National Gardens Scheme	11
Jumping Jacks Pre School Airfield Camp Netheravon	12
Clubs/Message	13
Chisenbury Metro Loop/ Thank you	14
Enford Football Club / Pewsey Children's Centre	15
Village Hall Treasurer needed / Short Mat Bowls	16
Village Hall User Groups	17
Village Hall Update from the Trustees	18
Village Hall Hire Charges	19
SPTA News	20
Wiltshire Link/Bus Services	22
Advertising	23
Village Committees	33
June Diary	34

**DATE OF  
NEXT COMMITTEE MEETING & DEADLINE**  
**Wednesday 17th June**

All items for inclusion, whether they are handwritten, typed or via e-mail, ***MUST be submitted by the date of the meeting or they will not be published until the following month.*** These articles may be handed in to any Newsletter Committee member. Please send e-mails to

**[tanya@becker.globalnet.co.uk](mailto:tanya@becker.globalnet.co.uk)**

Enford Newsletter Committee reserves the right to reject or omit from publication any material that is considered by majority of Committee Members to be detrimental to any person or which is not in the best interest of the community as a whole. All letters and articles must be signed, but the Committee will withhold the name of the writer if this is requested at the time of

sending it in.

[www.enfordnewsletter.org](http://www.enfordnewsletter.org)



**www.enfordnewsletter.org**

Don't forget you can read the colour version of the Newsletter at [www.enfordnewsletter.org](http://www.enfordnewsletter.org). You will also find a list of local services and telephone numbers.

### ENVELOPE COLLECTION

Next month we will be asking you to help with the running costs of producing the Newsletter. Look out for the small brown envelope which will be attached to the front cover.

**Taken by Richard Ford  
Thank you**



**PLEASE NOTE THAT THE DEADLINE FOR  
ENTRIES IN THE  
NEWSLETTER NEXT MONTH IS SLIGHTLY  
EARLIER THAN USUAL  
IT IS  
WED 17<sup>TH</sup> JUNE**

### DONATION FROM THE PARISH COUNCIL

The Committee would like to thank the Parish Council for their generous donation of £500 towards the cost of running the Newsletter.

### Congratulations to the Village Hall Committee

The Parish Council want to take this opportunity to thank the Village Hall Committee for their fantastic achievements. This is the biggest single project undertaken by the village in many a year. It was 10 years in the making and what a result.

Special recognition must firstly go to Chairman Judy D'Arcy-Irvine for her huge contribution. Many thanks also to Jeni Scott Dalglish as Secretary. They worked tirelessly in putting together the bids and applications for various funds and grants. Their combined efforts raised the amazing sum of £600,000 from the Lottery Grant, the Football Foundation and Kennet District Council.

They were ably supported by Julian Lee and later Ollie Stagg with the Football Foundation, Gill Gould with the Lottery and Alan Merritt as Treasurer. With funding in place our thanks also goes to Henry Middleton who took the project forward as Project Manager. Finally our thanks go to Margaret Webb and Gill Gould who set up the many activities and bookings to take place in the new hall.

We congratulate them all for what they achieved. We now have one of the finest Village Halls in Wiltshire, perfectly situated with lovely views and an ideal venue for social and sporting events. Visiting football teams will be suitably impressed. Our new Village Hall is something we can all feel proud of. Please support and use it.



## The Enford, Chisenbury and Coombe Summer Fete 2009

### HELPERS AND GAZEBOS WANTED!

If you are willing to lend a hand on the day of the fete – just 1 hour is fine – we would love to hear from you.

If you have a gazebo that you are willing to put up and lend for the day of the fete please let us know

Email: [enford-chisenbury-fete@live.co.uk](mailto:enford-chisenbury-fete@live.co.uk) or call Mary on 671 206



# *Antiques & Collectors Fair*

Sunday 7<sup>th</sup> June

**Enford Village Hall**

10.00 am – 4.00 pm

Enquiries & Stall Bookings  
Contact: Dolly Décor Fairs  
01980 671090




## **Wiltshire Tree Warden Scheme – Your County Needs You!**

Volunteers are still needed to look after the county's trees and we need the help of every town and parish council.

The Wiltshire Tree Warden Scheme recruits volunteer tree wardens in every parish to plant and care for trees and local woods.

To find out more about the scheme and how wardens are recruited go to:

<http://www.wiltshire.gov.uk/council/parishnewsletterhome/wiltshiretreewardenscheme.htm>

## **Don't Get Tied In A Knot Over The Japanese Knotweed**

It's invasive, vigorous and a very problematic weed – it is the Japanese Knotweed.

Read how Wiltshire Council is tackling this problem

<http://www.wiltshire.gov.uk/council/parishnewsletterhome/japaneseknotweed.htm>

## **Going Green Has Never Been Easier**

Wiltshire Council is continuing to offer subsidised food digesters and discounted compost bins in a bid to encourage everyone to go green.

For more information on the food digesters go to

<http://www.wiltshire.gov.uk/council/parishnewsletterhome/foodwastedigesters.htm>

And for more information on the compost bins click on

<http://www.recycleforwiltshire.com/household-waste/composting/composting-bin-offer.html>



# Moviola

## FILM NIGHT

presents

### SLUMDOG MILLIONAIRE

TUESDAY 9TH JUNE

AT

THE VILLAGE HALL

REFRESHMENTS AVAILABLE BEFORE FILM STARTS AND DURING INTERVAL.

DOORS OPEN 7PM. FILM STARTS 7:30PM.

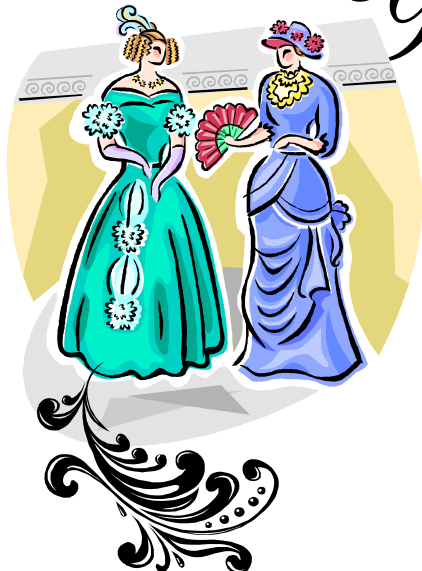
TICKETS £5 EACH IN ADVANCE, £6 ON THE DOOR.

TICKETS AVAILABLE FROM:

GILL GOULD 671462, MARGARET WEBB 670537, JUDY D'ARCY IRVING 670501

**also  
Coming Soon**

## Young Victoria



TUESDAY 7TH JULY

**“JAZZ ON A MIDSUMMER EVENING”  
THE RED LION, EAST CHISENBURY”  
SATURDAY 20th JUNE 2009  
(7.00 pm till late)  
(Doors open from 6.15 pm)**



- ❖ In aid of ALL SAINTS' CHURCH, ENFORD
- ❖ Fab food and groovy Jazz!
- ❖ Marquee
- ❖ Admission strictly by ticket only
- ❖ Only £25.00 per ticket (under 18s just £10)



**Take a trip “Down the Mississippi”! Savour legendary Southern-style hospitality with a mouth watering buffet from Guy and Brittany (our very own celebrity chefs as featured in the “DAILY TELEGRAPH”, “OCELOT” and “FORK”) with a wonderful “Southern Welcome Buffet” served from 18:30 to 21:30, including:**

- Southern style ribs with home-made BBQ sauce
- Spicy Cajun chicken
- Seafood gumbo,
- Sides to include: coleslaw, rice and beans, black-eyed peas, cornbread.....
- Pecan Pie, Mississippi Mud Pie, Cheesecakes.....
- All usual bar facilities PLUS “Mis Brittany’s” very own Mint Juleps!!



**“The Red Lion Riverboat Stompers” - led by Alyn Ross and his amazing Professional Jazz Band make a welcome return to have your feet tapping all night to New Orleans jazz, Blues, Rock 'n Roll, Ragtime, R 'n B and more.....!!!!**

*Don't miss out – come on, boogie on down and enjoy a fabulous, foot-stomping evening of jazz and dancing for all!*



**BOOKING HOTLINE - 01980 671124**

(All Major Credit and Debit Cards accepted)

[enquiries@RedLionFreehouse.com](mailto:enquiries@RedLionFreehouse.com)

[www.RedLionFreehouse.com](http://www.RedLionFreehouse.com)



**ADULTS: £25 each**

**Under 18s: £10 each**



# ENFORD, CHISENBURY and COOMBE SUMMER FETE & VILLAGE HALL GRAND OPENING

**SATURDAY 27 JUNE 1.00-5.00pm**

**ENFORD PLAYING FIELD**

## **FREE ENTRY**

Profits from the day will go towards buying equipment for our Village Hall & Youth Club as well as "Help For Heroes"

### **ALL DAY ATTRACTIONS:**

Climbing Wall, Pony Rides, Face Painting, Hair Braiding, Coconut Shy, Kids' Corner, Hula Hoop and Line Dancing Sessions, Bouncy Castle and Slide, Inflatable Bungee Run, Football Penalty Shoot Out, Pitch and Putt, Ladder and Logs, Skittles, Classic Cars, Dog Caricatures, Art Competition, Beer and Pimms Tent, Burgers, Crêpes, Ice Cream Van, Sweet Bus, fantastic Village Teas and Cakes and music from the Durrington Wind Band.

### **.....PLUS TIMED ATTRACTIONS**

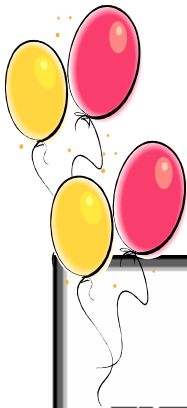
1pm	Fete opens
1pm	Under 10s football competition kicks off
1.30pm	Children's Magic Show —Village Hall (15 mins)
2pm	GRAND OPENING OF VILLAGE HALL + ART COMPETITION PRIZE GIVING
2pm	Fun Dog Show commences (see dog show advert for full details)
2.15pm	Children's Magic Show—Village Hall (15 mins)
2.30pm	Intervillage Tug O' War Commences —Central Arena
2.45pm	Children's Magic Show—Village Hall (15 mins)
3.45pm	Intervillage Tug O' War FINAL—Central Arena
3.30pm	Children's Magic Show—Village Hall (15 mins)
4pm	Raffle Prize Draw
4pm	Dog Show Final
4.15pm	Under 10s football FINAL
5pm	Fete closes



Please note times might change – all events will be announced on the tannoy

### **STALLS**

Village Home Produce and Plants ~ Pet Products ~ Jewelry ~ Gifts ~ and much much more



# The Enford, Chisenbury and Coombe Summer Fete 2009



## ART AND PHOTOGRAPHY COMPETITIONS:

**THE ENFORD, CHISENBURY AND COOMBE SUMMER FETE**  
**Saturday 27<sup>th</sup> June, 2009**

### KIDS ART COMPETITION

This will be judged in 2 age categories: **4-6; 7-11**

Subjects are:

*"My Best Friend"*

*"Green Planet"*

*"An Unusual Tea Party"*

*"A Famous Person"*

*"An Illustrated Poem"*

### PHOTOGRAPHY COMPETITION – OPEN TO ALL AGES

This will be judged in 2 age categories: **Under 16s and Over 16s**

Subjects are:

*"My Best Friend"*

*"Natural World"*

*"Cityscape"*

*"Salisbury Plain"*

*"Live Action Shot" (e.g. sport/gig/concert)*

NOTE: All photographs must have been taken in the last 12 months

Entries to both will be shown in the village hall on the day of the fete. There will be a 1<sup>st</sup>, 2<sup>nd</sup>, 3<sup>rd</sup> place for each age category in both competitions with a PRIZE to the winners

Please deliver entries for both competitions by Friday 19<sup>th</sup> June to:  
Bridget Holden, 539 East Chisenbury, tel: 671 195

**!GOOD LUCK! AND WE LOOK FORWARD TO  
RECEIVING ALL YOUR ENTRIES**

# FUN DOG SHOW

(Organised by Comfy Critters Pet Care and Grooming Services)

**The dog show is intended to be a non-serious, fun event, providing owners with the opportunity to parade their beloved pets for all to see. Anyone may enter with any dog be it pedigree or mongrel.**

CATEGORIES	TIME
Dashing Dude	1400
Beautiful Belle	1415
Adorable Puppy	1430
Olde Timer	1455
Daftest Brush	1500
Treat –to trick	1515
The Longest Stay	1530

Prizes will be awarded for 1<sup>st</sup>, 2<sup>nd</sup>, and 3<sup>rd</sup> place in each category.

The 1<sup>st</sup> place winner of each of the seven categories will go into the final judging to determine the winner of

## THE COMFY CRITTERS BOWL 2009

Prizes have been generously sponsored by:

Comfy Critters  
Honey Street Country Store  
OSCAR Pet Foods  
Webbs Natural Pet Care

### ENTRY

Entries into the show will commence from 1300 at The Comfy Critters stand.

Cost of Entry is £1.00 per dog with all proceeds going to equipping the Village Hall

### A GENTLE WORD ON SAFETY

1. Dog owners should note that they are responsible for the conduct of their dogs
2. Dogs are to be kept on leads at all times
3. Owners should exercise caution when in close proximity to other dogs
4. Owners should exercise caution when in close proximity to children
5. If a dog fouls the owners are to clean it up
6. Persons approaching another person's dog should seek permission before making any form of contact ie patting

**PLEASE BE CONSIDERATE, SAFE AND HAVE FUN**

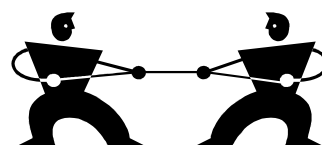
## INTER-VILLAGE TUG OF WAR COMPETITION

**We are running a FUN intervillage Tug of War competition between Enford, East Chisenbury and Coombe at the Fete. We need 6 people on each team.**

**OPEN TO ALL (As long as you are over 18)**

**To join a team please email:  
enford-chisenbury-fete@live.co.uk  
or call Simon on 671 206**

**Note: All participants will have to sign a disclaimer for insurance purposes in case of accidents**



## ENFORD & CHISENBURY GOLF – 3<sup>rd</sup> JULY 2009

1. General. It is proposed to hold a fun day out with an Enford and Chisenbury golf match at the Upavon Golf Course on Friday 3<sup>rd</sup> July. Assemble at 12.00pm for a Tee Off at 12.30pm. We are looking for a minimum of 12 players to take part. The intention is for 4 teams of 3 players to play 18 holes stableford.
2. Costs The cost for the afternoon golf is £23 (£18 for the green fee and £5 for prizes). Any money remaining will be donated to the Village Hall and Church. Members of Upavon Golf Club need not pay the £18 green fee.
3. Handicap. All play will be off full handicap. Maximum handicap for gentlemen is 28 and 36 for ladies. Please be honest when completing your entry form!
4. Prize Giving. Prize giving will take place in The Red Lion at 6.30pm. After prize giving everyone along with wives and friends are very welcome to stay on and have supper afterwards.
5. This is a fun day out, so come and join us.

### ENTRY FORM

1. Name:..... Phone:.....
2. Handicap:..... If none Gents 28, Ladies 36 and be honest.
3. Entry Fee:..... £23 or £5 if a member at Upavon.

Please reply by 26 June to either:

Adrian Orr  
Chapel House  
East Chisenbury  
Tel: 670447

or 'PK' Kenny  
Wayside Cottage  
Longstreet  
Enford  
Tel: 670033



**ALL SAINTS ENFORD CHURCH****Letter for the Month of June  
from our Vicar Colin Fox*****Dear Friends***

It is almost sixty years to the day that a group of men carried out an airborne feat of amazing precision and boldness during the 2<sup>nd</sup> World War. The attacks on 17<sup>th</sup> May 1943 used a specially developed 'bouncing bomb' on German dams. The dams had been identified as prime targets for the Allied Forces but the technical problems were thought to make it impossible, until the engineer Barnes Wallis invented a drum shaped bomb capable of spinning and skimming on the surface of the water. An accurate drop could bypass the dam's protection but to pull this off, from a height of only 60ft while flying at 240 miles per hour, required the bang-on precision and nerves of steel shown by members of 617 Squadron or as they were better known, 'the Dambusters'.

The dedication and discipline of those who flew those aircraft was a matter of life and death. The skills and expertise required made them good examples of what people are capable of with training and experience.

To get that level of precision and skill takes years of training and of course training requires obedience.

Although we may not be required to learn the sorts of skills needed by a pilot and bomb aimer, we are asked to use those talents that we have and have developed over the years and not just to bury them in the ground.

So, in fact, our external lives also depend upon obedience and how we live our earthly lives. Like any skill they need to become practised and incorporated into our lives.

***Colin Fox*****NETHERAVON CHURCHYARD**

It may not be fully known but anyone with links in the village can have their loved ones ashes buried in the Churchyard. A myth has spread over the years that only Church members can be buried. There is plenty of space for all.

The Churchyard is no longer open for burial.

***Colin Fox, Vicar*****A Prayer**

Almighty God we give You thanks for all who have helped develop our skills and talents to grow over the years.

May we always be open to learn new ideas even though they may challenge us.

Through Jesus Christ Our Lord

Amen



**ALL SAINTS ENFORD CHURCH****CHURCH SERVICES**

7 <sup>th</sup> June	09.00	Holy Communion
14 <sup>th</sup> June	10.30	Benefice Service Netheravon
21 <sup>st</sup> June	1030	Family Communion
28 <sup>th</sup> June	1800	Evensong

**CHURCH CLEANING ROTA****June**

5 <sup>th</sup> June	Jean Kierney & Helen Hadfield
12 <sup>th</sup> June	Sue Poole – Warren & Hilary Horsford
19 <sup>th</sup> June	Amanda Marx & Paula de Chalus
26 <sup>th</sup> June	Sarah Campbell

**July**

3 <sup>rd</sup> July	Tessa Manser
10 <sup>th</sup> July	Gai Rickett & Lowenna Harbottle
17 <sup>th</sup> July	Lyn Rich & Fanny Middleton
24 <sup>th</sup> July	Jean Kierney & Helen Hadfield
31 <sup>st</sup> July	Sue Poole – Warren & Hilary Horsford



# Concert

## Fittleton Church



*Friday 31st July 2009 at 7.30 pm*  
*Orlando Jopling plays Bach Cello Suites*

*Information & tickets 01980 670134*

All Saints Church, Netheravon

Fete at The Vicarage

Saturday 19<sup>th</sup> September

1.00 pm - 3.30 pm

All the usual stalls! BBQ, cakes, raffle, bottle stall, children's games and hopefully a beer tent

Time to start making jam and chutney for our Home Produce stall!

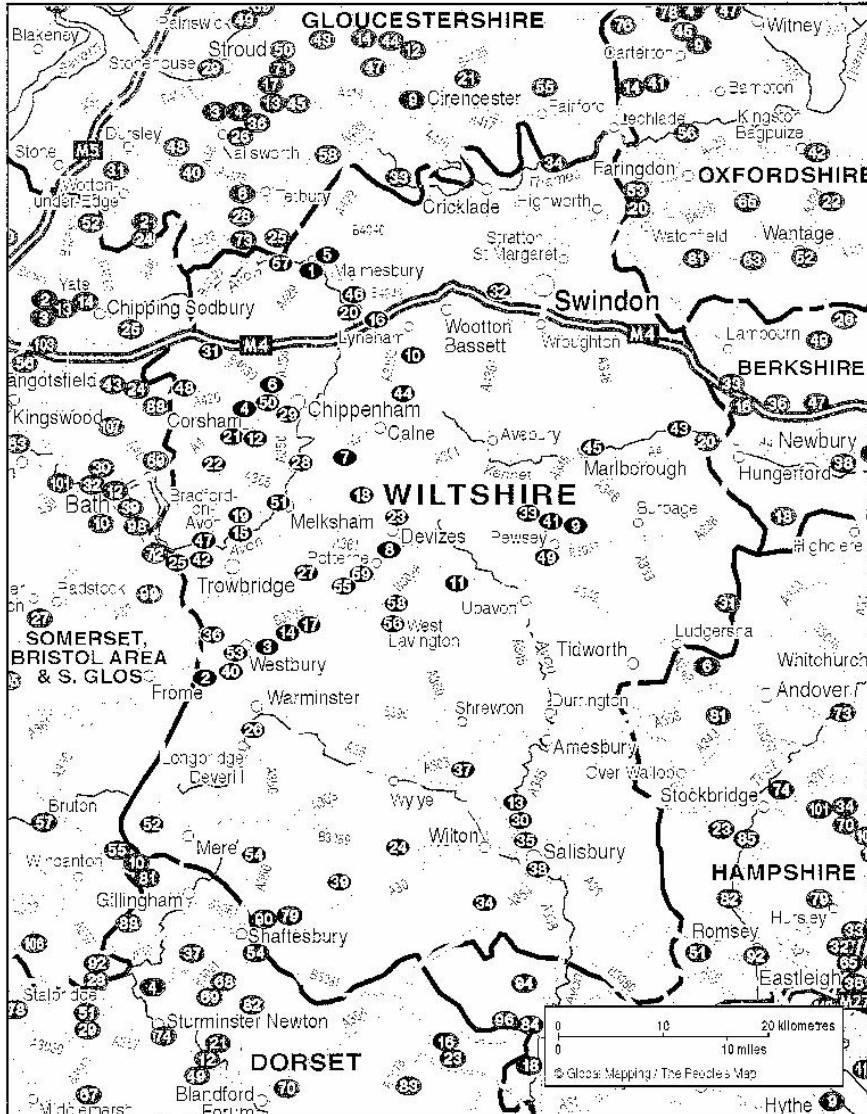
Donations of Bric a Brac, books, DVDs will be gratefully received  
 Time for a clear out! Deliver to The Vicarage any time after 1<sup>st</sup> September



# THE NATIONAL GARDENS SCHEME

## Gardens Open For Charity

### WILTSHIRE



This information is taken from ngs Gardens open for charity

You can find further information at [www.ngs.org.uk](http://www.ngs.org.uk)

The Newsletter accepts no responsibility for any changes made since the leaflet was printed



**Patron: HRH The Prince of Wales**

The National Gardens Scheme was founded in 1927 and raises funds by opening gardens to the public throughout England & Wales.

Date	Garden	No		
Wed 3 <sup>rd</sup> June (11.00-5.00)	Sharcott Manor, Nr Pewsey	49	01672 563485	Adm £3, chd free teas
Sat 6 <sup>th</sup> June (12.00-6.00)	Court Lane Farm	14	01380 830364	Adm £3, chd free
Mon 8 <sup>th</sup> June (2.30-5.30)	Mawarden Court	35	Not known	Adm £3, chd free
Fri 12 <sup>th</sup> June (2.00-5.30)	Windmill Cottage	58	01380 813527	Adm £2.50, chd free
Sat 13 <sup>th</sup> June (2.00-6.00)	Poulton House	45	01672 511705	Adm £3, chd free
Sun 14 <sup>th</sup> June (2.00- 5.30)	Manor Farm	33		Adm £3, chd free
Sun 21 <sup>st</sup> June (2.00-6.00)	Little Durnford Manor	30		Adm £3, chd £1
Thu 25 <sup>th</sup> June	The Old Mill	43		Adm £3.50. chd free



If you haven't already heard of us, we are **Jumping Jack's Pre-school**. Our pre-school has been operating in Netheravon for over 20 years. We are run by a hard working team of dedicated staff and supported by an enthusiastic committee, together we are totally committed to providing a first class pre-school.

We are open between 9:00-12:00 Monday - Friday and are able to offer places to children aged 2-5 years. Our pre-school has 2 large rooms as well as a secure outside play area. We have access to the camp playing fields and tennis court, which provides an excellent area for safe walks.

Although we are based on the camp at Netheravon, the pre-school is open to all families not just those with a military connection. Being on the camp has huge benefits, as well as being completely secure, we get great support from the Defence Fire Service, who are always happy to show off their big fire engines. Santa even travels in style on the camp, sometimes in the fire engine sometimes by helicopter.

If you are looking for a pre-school in this area please come and look around and meet the staff. They will be happy to discuss with you any aspect of the pre-school and can provide you with a welcome pack and any other information you may require. Either phone for an appointment or just pop in to see us.

We are registered with Ofsted and the Pre-school Learning Alliance.

### **Jumping Jacks Airfield Camp Pre-school**

Airfield Camp  
Netheravon  
Wilts  
SP4 9SF

Tel: 01980 678259



[www.jumpingjackspreschool.co.uk](http://www.jumpingjackspreschool.co.uk)  
e-mail [enquiries@jumpingjackspreschool.co.uk](mailto:enquiries@jumpingjackspreschool.co.uk)

**MESSAGES  
FOR FRIENDS  
AND  
NEIGHBOURS**

**We would like to wish  
a very warm welcome  
to all who have recently moved  
into the Parish of Enford.  
We hope that  
you will find  
many new friends and  
neighbours**



**CONDOLENCES**

to  
Mortimer Burdick and family  
on the sad loss of his dear mother Kathleen.  
Our prayers are with you.

**GET WELL**

to  
Jackie and Dave

**CONGRATULATIONS**

to  
Gay Monk  
We hope you had  
a wonderful  
70<sup>th</sup> birthday  
from all your friends  
on the  
Newsletter Committee

**THANKYOU**

to  
Paul, Clare and all the staff  
of the Swan  
for the great food and service  
which helped to make my  
70<sup>th</sup> so special  
*Gay Monk*

**THANKYOU**

to  
Ken, my family and  
all my friends for the beautiful  
cards & gifts  
*Gay Monk*

**CONDOLENCES**

to  
Lyn Stevens  
on the loss of her husband Les  
Our thoughts are with you

**CONDOLENCES**

to  
Ednah and Norman Beardsley  
on the loss of Ednah's mother  
Thinking of you

**FAREWELL**

to  
Eddie Edmoustone & Deborah Bennett  
who are leaving us after 10 happy years in Enford  
to live in Scotland.  
They have been most generous in leaving the village  
an archery target as a parting gift.

**We wish them well in their new home.**

**CONGRATULATIONS**

to  
Sharon and Mike  
on the birth of their son Daniel  
and  
first grandchild to Jenny and Paul  
Goodship

**The Book Club**

The Book Club meets once  
every two months to exchange  
opinions  
and review books that  
members have recommended.  
An excuse to meet over a glass of  
wine!!

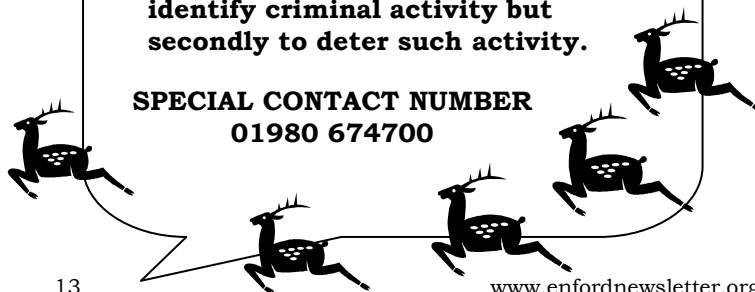


Anyone interested,  
please ring Vic on 01980 670928

**PLAINWATCH**

**PLAINWATCH is specifically designed  
to rapidly identify suspicious activity  
on the Plain: firstly and principally to  
identify criminal activity but  
secondly to deter such activity.**

**SPECIAL CONTACT NUMBER  
01980 674700**



## East Chisenbury Metro Loop

*This is a letter showing the results of the metro loop I asked to be installed in East Chisenbury to give some indication of the volume and speed of traffic passing through the village. I thought the info should probably be passed on.*

Dear Kate

Katie Briscoe

Kevin Bolan is off long term sick at present and I am dealing with his emails.

The survey at East Chisenbury has been analysed and the results are as follows

A total of 4563 vehicles were checked. The 85%ile was 27.5 mph ( the 85%ile is the speed at which 85% of the traffic is travelling at or below). The average speed of the vehicles checked was 23.2mph.

Of the 4563 vehicles checked 5.63% were travelling in excess of the speed limit, This figure also includes vehicles travelling just 1mph over the limit. The number of vehicles travelling above the ACPO (Association Of Chief Police Officers) threshold, this is the point at which the police would prosecute was only 0.6% (27 vehicles).

Unfortunately East Chisenbury does not meet the criteria for enforcement by the camera unit. With regards to the interactive signs, we have a limited stock of these signs and as I am sure you will appreciate we have to use these signs where they will have the most effect. Unfortunately the results of the survey does not warrant the placing out of the signs. I appreciate that this is not the answer you were looking for.

If I can explain how the unit is staffed then it might help to understand why we are unable to enforce / use interactive signs at this location. Our unit is currently staffed by Six full time enforcement officers and 1 part time enforcement officer to cover the whole county. Obviously when you take out days off and other commitments such as court, placing of the interactive signs etc, you will see that we like everybody else have a lot to try and do with limited resources. Two of our enforcement officers are also motorcyclist and have to carry out enforcement on our Core (sites which have a history of fatal and serious collisions and a high excess speed ) and Community Concern motorcycle sites. (these are sites where we can not find a safe parking space for one of our enforcement vans)

At present we have we have 75 sites that qualify as Community Concern sites and an additional 41 motorcycle Community Concern sites. So 15% of our time has to be split between a total of 116 sites.

As with every other department we have to target our limited resources to where they will be most effective and unfortunately to carry out enforcement or place out the interactive signs at this location could not be justified.

I will also forward a copy of this email to the Neighbourhood Policing Beat Manager P.c. 1046 Graham Wilkins for his information.

**Colin Davies**

Acting Sergeant 378

Safety Camera Unit

Wiltshire Police - 170 years of public service.



**Thank you**



**To all who donated, helped and came to buy at  
Enford Jumble Sale on Saturday 16th May 2009**

**We raised the grand sum of £204.96 for**

**Cancer Research UK**



## ENFORD FOOTBALL CLUB

Enford Football Club is hoping to move back to their home pitch at the newly built Village Hall for the start of the new football season 2009/2010.

The village hall has all the facilities required to run a successful club, including changing rooms, showers and referee's changing rooms.

The club will start training at the new facility in July in preparation for the new season. We have two newly qualified Level 1 Football Coaches at the club who will be taking the coaching sessions. We will advise when these will start.

To take the club forward, we also hope to set up a junior section of the club and are currently looking at funding for this project. We need volunteers who would be prepared to help out at sessions throughout the summer. If anyone is interested, then please contact Ollie Stagg on 01980 670634 or 07831 392035. We will ensure that any interested persons attain the proper qualifications and clearance to supervise and organise the sessions. Enford Football Club will offer a safe environment for youngsters of all ages to come and enjoy themselves whilst keeping fit and become part of a successful club.

We are organizing an under 10's tournament for schools and clubs at the grand opening of the new village hall on 27<sup>th</sup> June, so come along, show your support and enjoy yourself at what we hope will be a great day for the village and the community as a whole.

The Football Club would like to take this opportunity to thank all the people who have worked towards making this day possible with their tireless efforts over the last few years.

## News from Pewsey Children's Centre



### Toy Library Dates

**Tuesday 2nd June - Figcheldean**  
**Tuesday 9<sup>th</sup> June - Pewsey**  
**Tuesday 23<sup>rd</sup> June - Rushall Village Hall**  
**Tuesday 30<sup>th</sup> June - Figcheldean**

Pewsey Children's Centre provide an outreach service taking activities and information out to villages, and are hoping to start a programme of free monthly sessions in Netheravon soon – keep a look out for our posters! **A taster session is booked for Monday, 22nd June at the Phoenix Hall, Netheravon from 10.30 until 12.00** – come along for story time with the library, and free arts and crafts activities with the Children's Centre – all parents or carers with their under 5s are welcome. The mobile Toy Library is visiting Rushall Village Hall on Tuesday 23rd June from 10.30 until 12.30 – this is during Child Safety Week and as well as the regular toys to hire there will be a free children's activity based around this theme. Wiltshire Scrapstore and Resource Centre are coming along to the Toy Library session in Figcheldean on Tuesday 30th June – they will run a free art activity for children as well as having a shop for you to buy your arts and crafts essentials.

**Don't forget that if you're a parent of an under 5 you can receive a FREE good bag for registering with us – telephone (01672) 564140 to find out more, or look out for us at Enford Fete on Saturday 27th June**



## TREASURER FOR THE VILLAGE HALL COMMITTEE

The Committee is looking to replace Alan Merrett who is retiring after 10 years in the position. We are all very grateful for all his enormous contribution and for managing the finances throughout the building project. With the completion of the Hall, this is an exciting period for Enford, Chisenbury & Coombe.

The successful person would :

- a) Appeal to someone who enjoys community involvement
- b) Have some experience of single-entry book-keeping (not essential, as Alan is happy to work with a candidate for a handover period)
- c) Be prepared to present the Income & Expenditure report at the quarterly meetings and the annual accounts at the AGMs in September

Ongoing duties entail keeping a simple analytical cash book, banking cash/cheque receipts, making payments and managing cash flow.

Alan Merrett is happy to work with the candidate to ensure a smooth handover if necessary.

Please contact Judy D'Arcy Irvine on 01980-670501 or email [enfordvillagehall@btinternet.co.uk](mailto:enfordvillagehall@btinternet.co.uk) for further information

### ENFORD SHORT MAT BOWLS CLUB

**A Short Mat Bowls Club will be opening  
in our  
Village Hall.**

Bowling is a sociable, fun game so do come  
along for a taster evening

on

Wednesday 2<sup>nd</sup> September at 7.30pm.

A Local team is coming to demonstrate  
how to play and then you can have a go!

**Everybody welcome - no previous experience required!**

**Phone David or Ros.... for more details  
01980 670526**

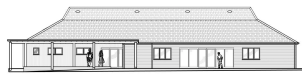
Or come along to the hall on the evening  
~~Cost: £3 per evening~~

### Village Hall Classes & Advertising in The Enford Newsletter

The Enford Newsletter Committee is happy to advertise any classes or activities in our New Village Hall. As a welcome to the village we would like to offer your first advert free of charge.

Thereafter, if you wish to advertise standard rates will be charged.

**See our advertising section at the end of the  
Newsletter for current rates**



## ENFORD VILLAGE HALL USER GROUP SCHEDULE TO DATE

Day	Activity	Time	Contact
Monday	Tatty Bumpkins	10.00am – 12.00noon (weekly, term time, from June)	class@northwiltshire.tattybumpkin.com 0845 6804658
Monday	Absolute Defence	7.00pm – 9.00pm (6 sessions starting 8 <sup>th</sup> June)	Ollie Braithwaite 07885 99 2000 jrob6000@hotmail.co.uk
Tuesday	Pilates	9:15am – 10:15am (weekly, term time, from June)	Tiggy Martin 01980 670438 tiggymartin@tiscali.co.uk
Tuesday	Bridge Club	10.45 am- 12.45pm (Sept15,22,29 & 6 Oct )	Jeni Scott Dagleish 01980 670210 Jscottdagleish@aol.com
Wednesday	Tatty Bumpkins	10.0am – 12.00noon (weekly, term time, from June)	class@northwiltshire.tattybumpkin.com 0845 6804658
Wednesday	Flower Arranging	2.30pm – 4.30pm (2nd Weds in month from Sept)	Ann Merrett 01980 671231 eagleann39@aol.com
Wednesday	Short Mat Bowls	7.00pm – 10.00pm (from Sept)	David Spencer 01980 670526 spencersgb@yahoo.co.uk
Thursday	Pilates	8:30am – 9:30am (weekly, term time, from June)	Nicci Caswell 01980 670382 niccicaswell@btopenworld.com
Thursday	Yoga	11.15am -12.12am (starting 3 <sup>rd</sup> Sept, term time)	Debby Wilkinson 07505 142285 debby@fulcrumyoga.co.uk
Thursday	Photography Club	8.00pm – 9.00pm (1 <sup>st</sup> Thursday in month from Sept)	Martin Webb 01980 670537 webb14@btinternet.com
Thursday	Gardening Club	8pm – 9pm (3 <sup>rd</sup> Thursday monthly, all year, from September)	Gill Gould 01980 671462 the.goulds@lineone.net
Friday	Stretch and Tone	9:30am – 10:30am (weekly, term time, from September)	Julia Fielden 07904 118 215 julia@bodydynamics.co.uk
Friday	Youth Club	6:30pm – 9pm (fortnightly, term time /tba)	Emma & Peter Jefferies 01980 670045 emmajefferies@btinternet.com

There is also interest in Mini Tennis.

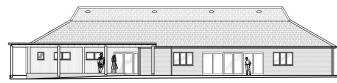
We are building up a team of adult helpers for the Youth Club. We would love to hear from anyone who is interested and who can commit to one Friday a month.

Enford Football Club are planning to move back next season, and plan to introduce Junior football once they are up and running.

**There will be a Toy Library session, for one day only, on 18th August. Timings tbc**

If you are interested in attending any of these, want to book in your own activity, or have any ideas or suggestions, please contact Gill Gould (01980 671462, the.goulds@lineone.net) or Margaret Webb (01980 670537, webb14@btinternet.com)

**\*\*\* Several people have already booked the hall for private events in 2009! If you are thinking of holding a private party or event at the hall, we recommend you contact us soon to check the availability of your preferred date\*\*\***



## ENFORD VILLAGE HALL

### PROJECT UPDATE FROM THE TRUSTEES

Just after submitting the May entry to the Newsletter, Southern Electricity advised us that they were unable to connect our electricity until the 13th May. This meant a delay in turning on the Ground Source Heat Pump (heating & hot water system) and an overall delay of two weeks. So, the Handover Date has moved to 1st June 2009, just in time for the first booking, the Polling Station for the European Elections & Unitary Council Elections on June 4th.

The final touches are taking place throughout the rest of May; deliveries of the Hall's equipment, Risk Assessments taking place, the Fire Officer is visiting the hall, the documentation (safety signs, health & safety notices, etc) is being completed and we will be ready for business as promised for June.

Two small changes to the Hire Charges – the new form is printed in this Newsletter:

- a) Function rate (booking the Hall for a private function) now shows the rate to include crockery and cutlery for up to 120 people, should this be required. We believe this provides excellent value for money, as the typical hire charge is 12p an item from a hire/catering company.
- a) The deposit – we have been advised that our suggested £25 is too low. The recommended £50 deposit has been adopted. This deposit is only payable for events which use the Hall's equipment or for functions which involve the serving of food and/or drinks.

Hire charges, the Booking Form and the Terms and Conditions of Hire are all now available on the Newsletter website.

PLEASE NOW COME AND SUPPORT THE HALL AT THE JUNE 'SPECIAL' EVENTS (SEE THE REGULAR 'USER GROUP' ENTRY FOR DETAILS OF THEIR START DATES):

- |             |  |
|-------------|--|
| - June 4th  | POLLING DAY – European and Unitary Council Elections |
| - June 7th  | ANTIQUES & COLLECTORS' FAIR 10am-4.00pm              |
| - June 9th  | "SLUMDOG MILLIONAIRE" 7.30pm                         |
| - June 27th | GRAND OPENING & SUMMER FETE 1.00pm-5.00pm            |

As always, if you would like to get involved in any way at all or would like to give us advice, please call/email any of the Trustees direct (listed in the Newsletter and in the Address Book) or email to [enfordvillagehall@btinternet.com](mailto:enfordvillagehall@btinternet.com).

# FOR SALE

**Brand New Laura Ashley Malmaison large rug 170cm X 240cm, colour Eau de Nil.**

Unwanted gift. Would accept £100 ono - Original price was £250.00.

**John Lewis Lovely Beech Table (As New)**

30" Wide x 48" Long x 34" High

**£60.00 ono**

Tel:( 01722 ) 325291



## ENFORD VILLAGE HALL

### ENFORD RECREATION GROUND & VILLAGE HALL TRUST

#### SCALE OF CHARGES – JUNE 2009

(Locals / Regulars' Rates)

Charity No. 305512

BOOKING OFFICER: TEL: 01980-670501

Email: [enfordvillagehall@btinternet.com](mailto:enfordvillagehall@btinternet.com)

Function Rate

including

Crockery &  
Cutlery

(see 3 below)

	Hourly Rate (see 1 below)	Session Rate (see 2 below)	Function Rate (see 3 below)	Function Rate including Crockery & Cutlery (see 3 below)
a) Main Hall, Conference Room	10.00			
b) Conference Room, Kitchen	10.00	25.00		
c) Main Hall, Conference Room, Kitchen	12.00	30.00	95.00	145.00
d) Exclusive Use of Whole Building	15.00	40.00	110.00	160.00
e) Pitch & Changing Rooms				
i) Adult		20.00		
ii) Youth		17.00		
f) Full day rate - Exclusive Use Of Whole Building - 0800-2330			150.00	200.00

**NOTE:** Rates include Electricity, Heating & Hot Water but NOT the cost of Temporary Event Notices. Please check with the Booking Officer who will advise you if your event requires a T.E.N. and how to apply.

1. Hourly rates apply to bookings by local residents, regular bookings by organisations for the purposes of ordinary meetings and/or activities attended by their members, regular bookings for classes (educational or physical). Rate includes 15 minutes setting-up/clear-down time.

2. The Session rate applies to childrens' parties (up to 13 years); morning/afternoon/evening activities open to the public (i.e. NOT private parties).

Morning: 0830 -1230 hrs

Afternoon: 1330 - 1800 hrs

Evening: 1830 – 2330 hrs

3. The Function rate applies to all bookings not covered by (1) or (2). IT IS A CONDITION OF BOOKING THAT THE BOOKINGS OFFICER IS ADVISED IF THE FINISH TIME IS LATER THAN 2330 HOURS. LATE SESSIONS ARE AT THE DISCRETION OF THE BOOKING OFFICER / MANAGEMENT COMMITTEE. There is white china crockery and cutlery and other equipment for up to 120 people

**NOTE: A DEPOSIT OF £50 IS REQUIRED AT THE TIME OF BOOKING OF ANY FUNCTION WHICH INCLUDES THE USE OF HALL EQUIPMENT AND/OR THE SERVING OF FOOD OR DRINKS**

**CANCELLATIONS:** Cancellations made less than 4 weeks before the booking of a function on a Friday evening or anytime Saturday will be charged at the FULL cost of the booking.

Cancellations made less than 1 week before the booking of any session from Sunday morning through to Friday afternoon will be charged at the Full cost of the booking.

**ALL BOOKINGS ARE SUBJECT TO THE "CONDITIONS OF HIRE" AND IT IS THE RESPONSIBILITY OF THE HIRER TO ENSURE THAT THEY ARE FAMILIAR WITH THESE CONDITIONS. THE FULL VERSION OF THE "CONDITIONS OF HIRE" IS AVAILABLE ON THE NEWSLETTER WEBSITE (WWW.ENFORDNEWSLETTER.ORG), IN THE VILLAGE HALL OR ON REQUEST.**

Hire of Chairs for External Use: £5.00 per day for 10 or part of 10

Hire of Tables for External Use: £2.00 per day per table



**SALISBURY PLAIN TRAINING AREA  
NEWS SHEET  
June 2009**



This forecast shows our planned training. Unfortunately operational requirements mean that dates and times can change. The warning flags and signs show the actual range danger areas on a given day. Late night firing times Tues, Thurs and Sat March to October 2330hrs and November to February 2100hrs inclusive.

Any general comment about military training should normally be made through Parish Councils to the Liaison Officer nominated by the appropriate Garrison Headquarters. Any specific complaint should be made in writing or if urgent by telephone as shown below:

**HEADQUARTERS SALISBURY PLAIN TRAINING AREA  
Westdown Camp, Tilshead, Salisbury, Wiltshire SP3 4RS**

**Telephone: Stonehenge (01980) – 620819**

**TRAINING:** The first two weeks of June will be relatively quiet, but from the week beginning Monday 15th June the whole Plain will be very busy with a TESEX for 1 R ANGLIAN Battle Group, including a squadron of challenger tanks, a Battle Group armoured exercise from the Land Warfare Centre running until Thursday 18th June and an armour heavy exercise from the Support Weapons School armoury until Wednesday 24th June. The TESEX will increase in intensity in all areas Wednesday 24<sup>th</sup>.

<b>ARTILLERY LIVE FIRING FROM SALISBURY PLAIN (WEST) (AS90)</b>	25
<b>LATE FIRING DAYS ON SALISBURY PLAIN (WEST) (AS90)</b>	NIL
<b>ANTI TANK FIRING DAYS ON SALIBURY PLAIN (WEST):</b>	NIL
<b>ARTILLERY LIVE FIRING DAYS FROM AREAS 6, 7 &amp; 8</b>	NIL
<b>ARTILLERY FIRING FROM SALISBURY PLAIN (EAST)</b>	NIL
<b>LATE FIRING FROM SALISBURY PLAIN (EAST)</b>	NIL
<b>LATE FIRING DAYS LARKHILL/WESTDOWN RANGES</b>	2, 4, 9, 11, 16, 18, 23, 25, 30
<b>NON FIRING DAYS LARKHILL/WESTDOWN DANGER AREA</b>	6, 7, 20, 21, 27, 28
<b>NON FIRING DAYS BULFORD RANGES</b>	6, 7, 13, 14, 20, 21, 27,28
<b>NON FIRING DAYS ON WARMINSTER RANGES</b>	6, 7, 20, 21, 27, 28

**NOTE:** Due to unforeseen changes there is always a possibility that there could be firing on other of the days listed. This is particularly so now operational training is being conducted to meet many and varied exigencies. The public should be careful to check that Red Flags are not flying before they enter the range. It is the time of the year when we change late night firing times. From March through to October the Tue, Thurs and Sat night firing times will revert back to 2330hrs.



**HELICOPTER NIGHT FLYING :** Night flying normally takes place Mondays to Thursdays inclusive over parts of SPTA. Some aircraft will show no lights but all will operate under strict area control.

**AIR ACTIVITIES :** Dates and timings given below are those listed at the time of printing but may be altered due to aircraft serviceability or weather conditions.

**AIRCRAFT TRIALS:**

Aircraft may conduct trials over Larkhill Range on each Wed and Fri from 1200 - 1700 hrs which could involve circuits to the East crossing the Avon Valley.

**PARACHUTING.** : Parachute dropping is scheduled to take place on EVERLEIGH and FOX COVERT DZs during normal working hours on most weekdays. Outside working hours and at weekends the dates and approximate times are:

**FOX COVERT DZ (C130)**

3 - 1800 - 2300  
9 - 1800 - 2300  
10 - 1800 - 2300

**PARACHUTING****EVERLEIGH DZ (C130)**

1 - 2100 - 2300  
2 - 1800 - 2000  
12 - 1800 - 13/0200

**STRIP LANDINGS****DEPTFORD DOWN (C130)**

5 - 1100 - 1700  
8 - 2300 - 09/1700  
9 - 2300 - 10/0300  
11 - 2000 - 12/0300  
13 - 0001 - 0300

**UPAVON (C130)**

NIL KNOWN

**KEEVIL**

NIL KNOWN

**FAST JET ACTIVITY (FGA)****SPTA 'W'**

11 - 1400 - 1600  
15 - AM  
16 - 1400 - 1700  
18 - 0800 - 1000  
23 - 30 - H24

**SPTA 'E'**

17 - 0800 - 1100  
17 - 1500 - 1700  
23 - 30 - H24

**SPTA 'C'**

11 - 1400 - 1600  
15 - PM  
16 - 1400 - 1700  
17 - 0800 - 100  
17 - 1500 - 1700  
18 - 0800 - 1000  
23 - 30 - H24

**MINISTRY OF DEFENCE – DTE SP (WEST) IMBER RANGES**

1. Notice is given that only the roads from:

- a. Warminster to Gore Cross via Imber, and
- b. Bratton to Heytesbury via Imber

will be open to the public from 0800 hours (8am) Sunday 16th August 2009 through to 18.00 hours (6pm ) Sunday 6<sup>th</sup> September 2009.

2. Please bear in mind that **ONLY METALLED ROADS** will be opened, **all other tracks, stone tracks and Southern Range Road and IMBER VILLAGE remain closed (Out of Bounds)** in accordance with the Imber Ranges Bylaws. Any movement off the aforesaid roads on the Imber Ranges is forbidden, trespassers are liable to prosecution.

3. Red Flags are only flown at the vedette post when live firing is taking place on the ranges. The absence of red flags does NOT imply that the roads are automatically opened to the public, times for which are notified in the Press and displayed on the entrance notice boards.

4. The roads identified above are not maintained to public road standards, if traversing the training area drivers should do so with extreme caution.



COMPLAINTS MAY BE TELEPHONED THROUGH TO  
STONEHENGE (01980) 620819 AT ANY TIME

**PLAINWATCH NUMBER 01980 674700**

**PLAINWATCH is specifically designed to rapidly identify suspicious activity on the Plain: firstly and principally to identify criminal activity but secondly to deter such activity.**

We seek the support of those Parishioners who regularly use the Plain for recreational purposes, who when doing so spot what could be termed suspicious or even criminal activity taking place. No approach or contact should be made with potential offenders. If such an opportunity occurs we would be pleased to hear from you via a special telephone number which we have set up within our 24 hour Operations Cell: **01980 674700**. We would welcome your assistance in making the Plain more secure and a safe place to enjoy.

**POLICE WARNING**

THIEVES OPERATE ON THE TRAINING AREA

SECURE YOUR VEHICLES AND EQUIPMENT  
AT ALL TIMES

# WILTSHIRE LINK SCHEMES



In a period of declining rural services, seeing the closure of many post offices and changes to the provision of Health services, many older people are being adversely affected and suffering as a result.

Link schemes are volunteer run groups, based in local communities that offer help with transport and good neighbour tasks such as collecting prescriptions, shopping and calling in for a chat. These valuable schemes provide a service which enables many people to remain living independently in their own homes and maintain some quality of life and dignity.

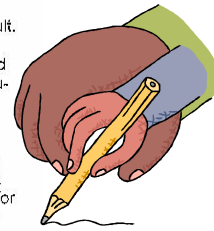
During this difficult period the Link schemes have seen a steady increase in the amount of requests for help and transport from those most vulnerable in our communities. Every week over 900 people, mainly our older residents, are helped to do those things which most of us take for granted. Indeed for many clients the friendly voice and face of a Link volunteer is often the only social contact they may have with their community. Requests for good neighbour help and transport assistance range from helping to change a light bulb to getting to the hospital for an out-patient appointment but regularly include:

- Getting to medical appointments
- Help shopping for food
- Reading requests
- Transport to luncheon clubs and other social events

Each of the 1400 volunteers (approx) throughout Wiltshire make a small contribution which improves the lives of many clients. Existing volunteers get a great deal of pleasure from their work with Link and new volunteers are always welcome. As well as being looked after, appreciated and supported Link volunteers:

- Are reimbursed their expenses
- Decide their own availability and interests
- Achieve an enormous sense of well-being and community spirit
- Make new friends
- Keep active
- Feel valued

Your support, publicity and encouragement of your local Link scheme is welcomed. If you have any questions or comments about either your local Link scheme or the Countywide support organization, The Link Project, then please contact us on: 01380 722241



[wiltlink.org.uk](http://wiltlink.org.uk)

**COMMUNITY  
FIRST**  
The Link Project

## BUS SERVICES

### SERVICE 210 ENFORD TO DEVIZES THURSDAYS AND SATURDAYS

#### OUT

Enford Bus Shelter	09:31
Enford Corner	09:34
East Chisenbury	09:38
Upavon Avon Square	09:42
Upavon, Ship Inn	09:45
Devizes Market Place	10:24

#### RETURN

Devizes Market Place	12:30
Upavon, Ship Inn	13:07
Upavon Avon Square	13:10
East Chisenbury	13:13
Enford Corner	13:17
Enford Bus Shelter	13:18



#### Please Note!

**Return Fares from Enford, East Chisenbury or Upavon to Devizes  
£6.00 Adult, £2.25 Child.**

**With a valid Wiltshire Fare pass anyone over 60  
can now travel FREE ! (instead of half-fare) on this service.**

# Advertising

For just a few pounds you can place  
an advertisement  
in the Enford Newsletter.

£15 per small square for 10 issues

£30 per half page for 10 issues

£5.00 per half page (1 issue)

£10.00 per page (1 issue)

Please contact Peggy Waterkeyn 01980 670418

## Avon Valley Chauffeur Service

- ❖ Airports & stations
- ❖ Hotels & restaurants
- ❖ Schools & colleges
- ❖ Business appointments
- ❖ Hospitals & doctors
- ❖ Special occasions



avc@avonvalleychauffeurs.co.uk

**01980 630094**

### *Pet Care Services*

*Pet Sitting  
Home Sitting  
Pet Taxi  
Dog Walking*

### *Mobile Pet Grooming*

*Warm Water Hydrobath  
Full Grooming  
Nail Clipping*

## Comfy Critters

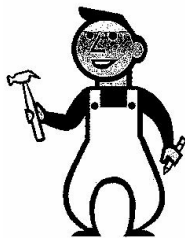
Established in February 2005 and based from our own village of Enford, Comfy Critters aims to bring piece of mind to pet owners in our rural communities

Mob: 07789 378413

Tel: 01980 670458

www.comfycritters.co.uk

Member of National  
Association of Pet  
Sitters



## MIKE TAYLOR

## CARPENTER

ROOFING

KITCHEN FITTING

CERAMIC TILING

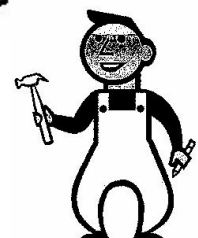
GENERAL BUILDING

PATIOS

FENCING

ENQUIRIES WELCOME with regard to all aspects of construction and maintenance

Please ring 01980 670969 or 07543834684



## iT SOLUTIONS

Tel: 07867 988140  
[www.ManageIT.info](http://www.ManageIT.info)

Your local computer and internet experts friendly, professional & affordable advice for home & small business users

**Do you need help with ...**

- Internet, Broadband & Wireless connection problems?
- Database management?
- Linking various computers together?
- Converting to / from Mac?
- Tailor-made systems?
- Just getting your computer to do what you want it to?

**Help is at hand – just telephone now!**

BEAUTY THERAPY • AROMATHERAPY  
 REFLEXOLOGY • INDIAN HEAD MASSAGE  
 Facials • Manicures • Pedicures  
 Massage • Waxing  
 Bridal Makeup

Gift  
Vouchers  
available



Make-up  
Advice &  
Lessons

**Jennie Aird Gauntlett**

ITEC BAPTAC MIFHB MIGHT IHHT

A full complement of beauty treatments for Face and Body  
 To make an appointment call 01672 851445

*“ 14 years in the area ”*

**For just a few pounds you can place  
 an advertisement  
 in the Enford Newsletter.**

**£15 per small square for 10 issues**

**£30 per half page for 10 issues**

**£5.00 per half page (1 issue)**

**£10.00 per page (1 issue)**

**Please contact Peggy Waterkeyn 01980 670418**

# D Taylor

## Building Services

### Bricklayer & General Builder

**All Building Works undertaken  
 Including Extensions, Garden Walls, Patios,  
 Roof Repairs, Plastering  
 Floor & Wall Tiling etc**

**01980 671078**

**Mobile No: 07719916854**

# *Carpet Clean*

*Ricky Flint*

*Est 1997*

*Friendly Local Service*

*Carpetclean@btinternet.com*

*Great Bedwyn 07799 215837*

# The Swan Inn at Enford

**Open for Lunch and Dinner every day**

**Try our Quiz Night every Tuesday! Starts 9.30pm £1.00 entry per person  
(teams of up to 4)**

**Great for Sunday Lunch**

**A choice of Roast Sirloin of Beef, Leg of Lamb or Loin of Pork**

**Plus**



**Specials every Sunday**

**Outside Catering can also be arranged on request**

**Call Clare or Paul on 01980 670338 to book**

**Email: Pauljacson5@btconnect.com**

**Full Menus on our website: [home2btconnect.com/theswaninnatenford.co.uk](http://home2btconnect.com/theswaninnatenford.co.uk)**

## **M NASH & P WILKINS**

**ALL LANDSCAPING WORK UNDERTAKEN**  
**FENCING\*PATIOS\*PATHS\*PONDS\***  
**BRICKWORK**  
**HEDGE CUTTING\*GARDEN CLEARANCE**  
**GRASS CUTTING**

**Tel: MIKE 01380 840767**  
**Mobile: 07977 950654**

**Tel: PAUL 01380 840763**  
**Mobile: 07970 557002**



## **CAN I HELP?**

**CONSERVATORY CLEANING**  
**WINDOW CLEANING**  
**&**  
**GENERAL MAINTENANCE**

Using state of the art ladder systems I can reach every part of your conservatory. I also carry out normal window cleaning service and can turn my hand to most general maintenance tasks in the home and garden

All work is guaranteed.  
 For free quote  
 and written estimate if requested  
**Contact Peter 07875 238730**

**MODERN & TRADITIONALLY**  
**DESIGNED MEMORIALS**

### **M J SLY**

*Monumental Stonemason*

*New Memorials, Additional Inscriptions*  
*Restorations, Free Home Visits*  
*Free Brochure*

**Marlborough (01672) 516797**

**Email: martin@mjsly.co.uk**

**Website: www.mjsly.co.uk**

*Workshop & Showroom at Pelham Court,*  
*London Road,*  
*Marlborough, Wiltshire*

## **ELSTON VETERINARY CLINIC**

*ELSTON LANE, SHREWTON*

*Dr. Enid Frantilla, DVM MRCVS*

*Small Animal Medicine and Surgery*

*Providing high quality pet healthcare*  
*and a caring, friendly professional service*  
**HELPING YOU TO HELP YOUR PETS!!**

*Consultations by appointment, Mon-Sat*

*For appointments or enquiries, and*  
**24 HOUR EMERGENCY SERVICE**

**01980 621999**

## **ROD SMITH**

*The Garage*  
*Netheravon*

**UNIPART CAR CARE CENTRE**

*MOT Tests*  
*Car Repairs & Servicing*

*Now able to service air conditioning units*  
*Batteries, Exhausts & Tyres at Competitive Prices*

*Handy Gas*

**Tel: Stonehenge (01980) 670348**

## **AGRICENTRE**

*Now stocking Frontline for cats and dogs*  
*at an unrivalled price*  
*Excellent products at an excellent price from*  
*well-known horse wormers*

*Electrical fencing*  
*Complete range of Briswim pool chemicals*

**FREE HOME DELIVERY!**

*Contact: Justin Young, A.M.T.R.A., SQP*  
*(Branch Manger)*

**07850 184111**  
**01722 320316**



\*\*\*\*\***B J LONG**\*\*\*\*\*

( **AKA BERTIE** )

*Live music from the 1950s 60s 70s*

**FOR BOOKINGS**

**01980 670767**

**0772 4104106**

**E-Mail: [bjlong@hotmail.co.uk](mailto:bjlong@hotmail.co.uk)**

## Redmayne-Bentley Stockbrokers

REDMAYNE  
BENTLEY  
STOCKBROKERS

*Your friend on the Stock Exchange*

To discuss how we can help, please contact either  
Hugh Lancaster or Gerald Lowes

**Telephone:** 01488 686400

**Email:** [Hungerford@redmayne.co.uk](mailto:Hungerford@redmayne.co.uk)

**Visit:** [www.redmayne.co.uk/hungerford](http://www.redmayne.co.uk/hungerford)

BEST ADVISORY BROKER  
**INVESTORS INVESTMENT**  
**CHRONICLE AWARDS 2008**  
SILVER AWARD



2003-2007: BEST ADVISORY BROKER

VAT No: GB 613 139 763. Members of the London Stock Exchange  
Authorised and Regulated by the Financial Services Authority

*WORRIED ABOUT INLAND REVENUE  
SELF-ASSESSMENT?*

*Why not talk to a commercially-experienced  
Chartered Accountant? Local help is at hand.*

### **MERPEN ACCOUNTING**

*Accountancy & Small Business Advisory  
Management*

*\*Hands-on help \*No job too small \*Even part-time,  
money-making hobbies \*Initial discussions free of  
charge \*Further work done professionally for probably  
the lowest fees around*

*Alan Merrett FCA*

*Eagle Lodge, East Chisenbury, Pewsey, SN9 6AQ*

**Tel: 01980 671441**

**[www.pewsey-uk.co.uk/merpen-accounting.html](http://www.pewsey-uk.co.uk/merpen-accounting.html)**



## OIL TANKS



**YOUR LOCAL OIL TANK REPLACEMENT SPECIALISTS**

**S**OUTHERN  
**T**ANK  
**S**ERVICES LTD

- COMPETITIVE PRICES
- DOMESTIC & COMMERCIAL
- FULL REPLACEMENT SERVICE
- FRIENDLY & RELIABLE
- FREE QUOTATIONS

**TELEPHONE 01985 248 555**

[www.tankservices.co.uk](http://www.tankservices.co.uk) Deptford Farm, Wylye, Wiltshire, BA12 0QQ

## **SUCOL Solutions**



Home PC Tuition and Setup  
Home Network Setup  
Data Storage and Backup  
Small Business Server (SBS)  
PC and Server Repairs  
Network Infrastructure  
Design and Installation  
CAT5e Cabling  
IT Consultancy

**Colin Mundy**

22 Willow Drive  
Durrington  
Salisbury  
Wiltshire  
SP4 8DE

Tel: 01980 594368  
Mob: 07989 261778  
Email: [colin.mundy@ntlworld.com](mailto:colin.mundy@ntlworld.com)

## **Bits & Pieces** (Durrington Ltd)

***BUILDING, GARDENING & DIY***

***PETS, PANELS, AGGREGATE***

**37 - 39 Bulford Road, Durrington  
Wiltshire SP4 8DL**

**Tel: 01980 655552**

**Fax: 01980 652351**

**Proprietors: P & M Conn**

# DJ Landscaping

**No Job Too Big Or Small  
Just call us we do it all**

- Lawn Mowing
- General Tidying
- Hedge Cutting
- Turfing
- Fencing
- Ponds
- Paths
- Brick Works
- Leaf Collection
- Pruning
- Weeding
- Decking
- Patios
- Pergolas
- Driveways

Free estimates, Hourly Rates  
Regular appointments are available

**Call the company you can trust**

Tel: 01980 846740

Mob: 07717 831907

For just a few pounds you can place  
an advertisement

in the Enford Newsletter.

£15 per small square for 10 issues

£30 per half page for 10 issues

£5.00 per half page (1 issue)

£10.00 per page (1 issue)

Please contact Peggy Waterkeyn 01980 670418



## MOBILE HAIRDRESSER

Ring Donna

on

07711 579403

## KD WORSDELL

**Carpentry & Joinery  
Building Works & Maintenance  
Bathrooms and Kitchens**

**Please Call**

**01980 630545**

**Or**

**07759 586162**

## CHINA RESTORATION

Specialist in Antiques & Figurines

24 Years Experience

Workshops Arranged Throughout The Year

Tel: 01672 851445

Web: crackedpots.co.uk

# G. B. Chamberlain

## Flooring Specialist

Specialising in Ceramic  
Floors and Walls

Tel: 07971 182752

24 hour answer service

## OIL FIRED BOILERS

**For prompt reliable –  
SERVICING  
REPAIRS  
COMMISSIONING**

**Call Tim Walsh**

**Tel. 01980 652803  
Mobile 07919603884**

## FRED MONRO

### Contemporary Interiors

**Bespoke carpentry  
Made-to-measure kitchens and furniture  
Affordable prices  
Free quotations**

**Call: 07717 416423  
Email: fred@fredmonro.co.uk  
www.fredmonro.co.uk**

**Made-to-measure kitchens and furniture**

# RCM

## Plumbing & Heating

- Kitchens • Heating systems • Competitive rates • General maintenance • Bathroom shower pumps • New and replacement bathrooms
- Tiling • New and replacement cylinders (vented and unvented) • Fully Insured

24 hour callout

Tel: Russell McBride 07758 228 743



## B REPAIRED

Musical Instrument Repairers

**Graham & Yvonne Ballard**  
The Music Studio 8 Thurlow Close  
Amesbury Nr. Salisbury  
Wiltshire SP47QG

01980 625380  
07957 806401/2

www.brepaired.co.uk

**GRAHAM BUCKLAND SERVICES**

*General building maintenance: plumbing,  
Carpentry, glazing, brickwork, etc  
Free quotes and reasonable rates*

*'Man with a Van' hire.  
Removals and House Clearance  
Undertaken*

**Tel: 01980 670870  
or 07831 889 666**

# Cape Cuisine

**ONLY THE BEST HOME-COOKED FOOD**

*Weddings, Anniversaries, Parties.  
Hot or Cold Buffets*

**For Quotations Phone:**

01980 590808

**Carpet & Upholstery Cleaners**

**Salisbury Amesbury Andover**  
and surrounding areas

**See our  
Website  
for latest  
offers!**

- \* Local reputable company
- \* Fast, efficient, no-nonsense service
- \* Inclusive fixed price quotations

For your **free**, no obligation quote call: **01980 621621**  
enquiries@cleanlivingmcc.com  
www.cleanlivingmcc.com

*"It's blue, it's  
blue!"*

**CLEANLIVING**

*Specialising in delighted clients*

Finalist in two categories at the  
Business Excellence Awards 2009

**PEST CONTROL SERVICE**

*RABBITS, RATS, MOLES  
WASPS, SQUIRRELS  
BIRD PROOFING*

CALL NIGEL

**01980 670804  
07854 828904**

**GDB TECHNICAL SERVICES LIMITED**

**Computer/IT support**  
**Small business and Home users**

Networking issues/installations  
PC Problems  
Tuition  
General IT advice/help  
Upgrades  
Data Recovery  
Service Support Options

Call **01980 623052** or visit  
**www.gdbts.com** to see if we can help.

**GRAHAM C BROWN & SON****Oil boiler maintenance**

**A well-established, friendly, local  
company, operating within the  
Salisbury Plain area.**

**01980 622737**

# Yoga, Pilates & Nia classes

Mon 10.00am	Pilates	Rushall Village Hall
Mon 11.15am	Yoga	Rushall Village Hall
Tues 7.30pm	Yoga	Upavon Village Hall
Weds 9.30am	Yoga	Rushall Village Hall
Thurs 9.30am	Nia	Rushall Village Hall

**Nia** is a dance based fitness programme which promotes strength, stamina, flexibility, stress reduction, co-ordination, weight loss and much more. Nia is a free spirited and fun way to get fit. This is a drop-in class (£5) and is suitable for all levels of fitness.

**Yoga and Pilates** classes are booked on a termly basis. All classes, including Nia run during Wiltshire Schools term times.

Visit [www.fulcrumyoga.co.uk](http://www.fulcrumyoga.co.uk) or email [debby@fulcrumyoga.co.uk](mailto:debby@fulcrumyoga.co.uk) or call Debby Wilkinson on 07505 142285 for further details.

Debby is a British Wheel of Yoga teacher and a course tutor for the British Wheel of Yoga teacher training programme. She also qualified with the Pilates Institute and is a Nia White Belt teacher.

## Avon Security

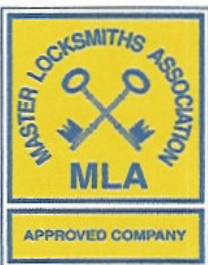
MASTER LOCKSMITHS

### Engraving Service Now Available

- > Brass
- > Plastics
- > Aluminium
- > Glass
- > Trophies
- > Gifts

### Free Advice & Quotations On Securing Your Property & Belongings

Key Cutting  
Locks Supplied & Fitted  
Access Control  
Safes  
PVCu Locks  
Master Key Systems  
Lock Repairs  
Door Furniture & Ironmongery  
Transponder Car Keys  
Keys To Code  
Watch Batteries & Straps  
Emergency Call Out Service



# 01980 626000

21, Salisbury Street, Amesbury, Wiltshire, SP4 7AW

[www.avonsecurity.net](http://www.avonsecurity.net)





**TIM BUCKLAND  
BOILER MAINTENANCE**

*FOR SERVICE AND BREAKDOWNS*

*Friendly and efficient service  
Wide stock of boiler spares in stock*

**VERY COMPETITIVE PRICES**

*Also AGAs and RAYBURNS serviced*

**Tel: 01980 625846**

**CAROL G DAYTON**

*ITEC MGPP IHHT T.A.Th*

*Massage Therapist  
Indian Head Massage  
Reflexology  
Skenar Therapy  
Reiki  
Hopi Ear Candles  
Injury Treatment  
Waxing and Sugaring*

*For further information please call:*

**01980 653151  
or 07787 513563**

**M.W. WALSH**



**TREE SERVICES**

**All aspects of tree surgery and hedge  
maintenance professionally undertaken**

**HIGH QUALITY WORK**

**FULLY INSURED**

**PERSONAL SERVICE**

**FREE ESTIMATES**

**01980 670032**

**• NO VAT •**

*Whether it's a dazzling new colour, new textured or  
classic haircut, Louise and Stacie look forward to  
helping you achieve your stunning new look. Come  
along for your free consultation.*

*Appointments not always required.*

**Tina's Hairdressers**

*High Street, Netheravon*

**Open** – Tuesday 9-5.30, Wednesday 9-2,  
Thursday 1-7, Friday 9-6, Saturday 9.00-2

**Closed** – Sunday and Monday

**Tel: 01980 670628**

**New Range of Jewellery and Bags For Sale**

**RGV ENGINEERING  
(NETHERAVON) Ltd**

**HIGH STREET**

**NETHERAVON**

**01980 670667**

**Local family business established over 30 years**

**SPECIALISTS IN PLUMBING,  
HEATING AND ELECTRICAL  
BOILER SERVICE AND  
COMMISSIONING**

**CORGI \* OFTEC \* NICEIC \* ECA**

**VILLAGE COMMITTEES****PARISH COUNCIL**

<b>Chairman</b>	Ken Monk	<b>670540</b>
<b>Vice Chairman</b>	Tessa Manser	<b>670605</b>
<b>Parish Clerk</b>	Bill Vergette	<b>670132</b>
<b>Councillors</b>	Stan Bagwell	<b>670154</b>
	Norman Beardsley	<b>670860</b>
	Sara Everett	<b>670475</b>
	Michael Fay	<b>670553</b>
	Ann Merrett	<b>671231</b>
	Martin Webb	<b>670537</b>
	Jane Young	<b>670532</b>
	Frank Horsford	
	Adrian Orr	

**VILLAGE HALL**

<b>Chairman</b>	Judy D'Arcy-Irvine
<b>Vice Chairman</b>	
<b>Treasurer</b>	Alan Merrett
<b>Secretary</b>	Jeni Scott Dalglish
<b>Parish Council Rep</b>	Jane Young
<b>Football Club Rep</b>	Julian Lee
<b>PCC Rep</b>	Sarah Campbell
<b>Newsletter Rep</b>	Jacqui Elkins
<b>Booking Officer</b>	Judy D'Arcy-Irvine
<b>Property Officer</b>	David Spencer
<b>Grounds Officer</b>	Hamish Scott Dalglish

**PARISH HALL**

<b>Chairman</b>	Colin Pearse
<b>Vice Chairman</b>	Jacqui Elkins
<b>Treasurer</b>	Margaret Young
<b>Secretary</b>	Katrina Knight

**FOOTBALL CLUB**

<b>Chairman</b>	Julian Le
<b>Secretary</b>	Julian Lee
<b>Treasurer</b>	Ollie Staggs
<b>1<sup>st</sup> Team Manager</b>	Julian Lee
<b>2<sup>nd</sup> Team Manager</b>	Ian Lawes

**PAROCHIAL PARISH COUNCIL**

<b>Church Wardens</b>	Michael Hadfield John Poole Warren
<b>Treasurer</b>	Jonathan Walsh
<b>Secretary</b>	Sue Poole-Warren
<b>Council Members:</b>	Sarah Campbell Judy D'Arcy-Irvine Bob Hastie Frank Horsford John Manser Alan Merrett Henry Middleton

**THE VICAR**

Rev Colin Fox  
The Vicarage,  
Netheravon  
**01980 670326**

**CHISENBURY AND ENFORD SHOW**

<b>Chairman</b>	<b>In abeyance</b>
<b>Treasurer</b>	

**NEWSLETTER COMMITTEE**

<b>Chairman</b>	Tanya Becker
<b>Vice Chairman</b>	Linda Mundy
<b>Secretary</b>	Linda Mundy
<b>Treasurer</b>	Linda Mundy
<b>Advertising</b>	Peggy Waterkeyn
<b>Village Hall Rep</b>	Jacqui Elkins
<b>Parish Council Rep</b>	Jane Young Sylvia Latham Ann Houghton Gay Monk Clare Burge

**SCHOOL GOVERNORS**

<b>Chairman</b>	Colin Cruikshanks
<b>Clerk</b>	Sally Jones
<b>Enford Rep</b>	Andrew Marx

**NEIGHBOURHOOD WATCH COORDINATORS**

**Area Co-ordinator** - Steve Becker (steve@becker.globalnet.co.uk)

<b>Coombe Lane East (30-45)</b>	Jo Crossland
<b>Coombe Lane West (1-17)</b>	
<b>&amp; Fifield</b>	Angie Taylor Terry Mundy
<b>Coombe</b>	Ednah Beardsley Peggy Waterkeyn Not Filled
<b>New Town</b>	Not Filled
<b>Enford South (LongStreet)</b>	Venessa Murray Hill
<b>Enford Central</b>	
<b>(Enford Hill &amp; Hill Farm Road)</b>	Sarah Campbell
<b>New Buildings</b>	Stan Bagwell
<b>Compton</b>	Bruce & Lucy Waight
<b>West Chisenbury</b>	Derek Ford Rod Mason

<b>East Chisenbury (North)</b>	Stephen Calton
<b>East Chisenbury (Central)</b>	Vicky Orr
<b>East Chisenbury (South)</b>	Barry Chamberlain
<b>Enford North &amp; Littlecott)</b>	Not Filled
<b>Grants Road (North) (14-29)</b>	Ian Teasdale
<b>Paddocks Close</b>	Colin Pearse
<b>Water Lane (East)</b>	
<b>(East from Field View)</b>	Lyn Riche
<b>Water Lane (West) (1-10)</b>	John Powell
<b>Grant's Road (South)</b>	
<b>(1-13, 30-33)</b>	Not Filled

## For Your Diary June 2009

1 <sup>st</sup>	Monday	
2 <sup>nd</sup>	Tuesday	Toy Library, Figheldean, 10.30am – 12.30am /Quiz, The Swan Inn, 9.30pm
3 <sup>rd</sup>	Wednesday	
4 <sup>th</sup>	Thursday	Black Bin/ <b>POLLING DAY, European &amp; Unitary Council Elections, Village Hall</b>
5 <sup>th</sup>	Friday	Toy Library, Fighledean,10.30am – 12.30pm/
6 <sup>th</sup>	<b>Saturday</b>	
7 <sup>th</sup>	<b>Sunday</b>	<b>Holy Communion, 9.00 am</b> /Antiques & Collectors' Fair, Village Hall, 10.00am – 4.00pm
8 <sup>th</sup>	Monday	
9 <sup>th</sup>	Tuesday	Toy Library, Pewsey, 10.30am – 12.30am /Moviola "Slumdog Millionaire", Village Hall,7.30pm/ Quiz, The Swan Inn, 9.30pm
10 <sup>th</sup>	Wednesday	
11 <sup>th</sup>	Thursday	Recycling
12 <sup>th</sup>	Friday	
13 <sup>th</sup>	<b>Saturday</b>	Village Hall Committee Meeting , 7.30pm
14 <sup>th</sup>	<b>Sunday</b>	<b>Benefice Service, Netheravon, 1030am</b>
15 <sup>th</sup>	Monday	
16 <sup>th</sup>	Tuesday	Quiz, The Swan Inn, 9.30pm
17 <sup>th</sup>	Wednesday	Newsletter Meeting 7.30 pm
18 <sup>th</sup>	Thursday	Black Bin
19 <sup>th</sup>	Friday	
20 <sup>th</sup>	<b>Saturday</b>	Jazz on a Summer Evening, The Red Lion, 7.00pm 'til late
21 <sup>st</sup>	<b>Sunday</b>	<b>Family Communion,1030 am/Summer Solstice/Father's Day</b>
22 <sup>nd</sup>	Monday	
23 <sup>rd</sup>	Tuesday	Toy Library, Rushall, 10.30am – 12.30am /Quiz, The Swan Inn, 9.30pm
24 <sup>th</sup>	Wednesday	<b>Enford Village Hall Committee Meeting, Village Hall,7.30pm</b>
25 <sup>th</sup>	Thursday	Recycling
26 <sup>th</sup>	Friday	
27 <sup>th</sup>	<b>Saturday</b>	<b>Village Hall Grand Opening &amp; Village Fete, 1.00pm – 5.00pm</b>
28 <sup>th</sup>	<b>Sunday</b>	<b>Evensong,6.00 pm</b>
29 <sup>th</sup>	Monday	
30 <sup>th</sup>	Tuesday	Toy Library, Figheldean, 10.30am – 12.30am /Quiz, The Swan Inn, 9.30pm