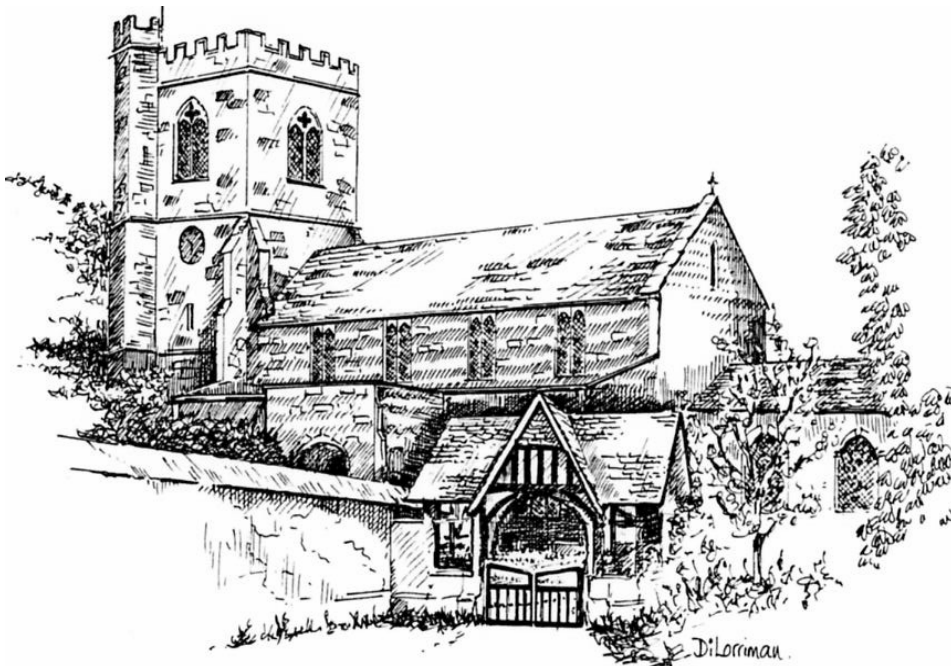




# ENFORD NEWSLETTER



## May 2009

You can now read the Enford Newsletter in colour  
at

**[www.enfordnewsletter.org](http://www.enfordnewsletter.org)**

In addition you will find interesting articles news, colour  
photographs and past Newsletters  
plus  
useful information and services



# ENFORD NEWSLETTER

## CONTENTS

Newsletter Website/Village Hall Advertisers/Jumble Sale/Apology	1
A Message for Lent from our Vicar	2
Church Services & Cleaning/Christian Aid/Pewsey Children's Centre	3
Car Boot/Lacemakers/Rowdeford Garden Fair	4
Neighbourhood Watch/Victorian Day/Poem	5
Antiques Fair/Film Night	6
Jazz on a Summer Evening	7
Village Fete & Grand Opening of Village Hall	8
Art & Photography Competition	9
Tug of War/Dog Show/Golf	10
Highways News/Enford Football 200 Club	11
Upavon Good Companions/Clubs/Messages	12
Wiltshire Link/Bus Services	13
Village Hall User Groups	14
Defence/Bridge/Short Mat Bowls	15
Village Hall Update/Note from the Trustees	16
Village Hall Hire Charges	17
SPTA News	18
Advertising	20
Village Hall Committees	31
May Dates	32

## DATE OF NEXT COMMITTEE MEETING

**Wednesday 20th May**

All items for inclusion, whether they are handwritten, typed or via e-mail, ***MUST be submitted by the date of the meeting or they will not be published until the following month.*** These articles may be handed in to any Newsletter Committee member. Please send e-mails to

**[tanya@becker.globalnet.co.uk](mailto:tanya@becker.globalnet.co.uk)**

Enford Newsletter Committee reserves the right to reject or omit from publication any material that is considered by majority of Committee Members to be detrimental to any person or which is not in the best interest of the community as a whole. All letters and articles must be signed, but the Committee will withhold the name of the writer if this is requested at the time of sending it in.



## www.enfordnewsletter.org

Don't forget you can read the colour version of the Newsletter at [www.enfordnewsletter.org](http://www.enfordnewsletter.org). You will also find a list of local services and telephone numbers.

If you visit the website you can read old copies from the past 3 years. Over the coming months we will work on adding many more of our old copies going back to 1967. Many of you will find these of great interest. They are currently in my loft gathering dust but I think that they deserve to be shared with everyone.

We would appreciate any comments you have that might help us to improve the website so that it becomes a useful medium for sharing news and information.



This photograph by Martin Webb is just one of those you can see on The Newsletter Website. Do have a look. We have some very talented neighbours.

Enford Village Hall Committee Meeting  
May 13th 2009 at 7.30pm

Please call 670501 or 670210 to check on location if you would like to attend

### Village Hall Classes & Advertising in The Enford Newsletter

The Enford Newsletter Committee is happy to advertise any classes or activities in our New Village Hall. As a welcome to the village we, would like to offer your first advert free of charge.

Thereafter, if you wish to advertise standard rates will be charged.

**See our advertising section at the end of the  
Newsletter for current rates**

The Committee would like to apologise to all residents of Coombe Lane for any upset caused by an inclusion in last month's Newsletter.

# JUMBLE SALE

PARISH HALL

16THMAY

2.00PM



IN AID OF CANCER CHARITY

## ALL SAINTS ENFORD CHURCH

## Letter for the Month of May from our Vicar Colin Fox

### *Dear Friends*

The good weather is now encouraging us out of doors . There are signs of life; my broad beans are up, my leeks have ripened off beautifully and it won't be long before the sweet peas are to be planted out.

I sound as though I am a gardener but I do have a love of being out of doors, just watching things grow. I am no expert.

There is a rhyme which goes:

The kiss of the sun is pardon

The song of the birds for mirth

One is nearer God's heart in the garden

Than anywhere else on earth.

*Dorothy Gurney*

It is not true and it is bad theology. What is true, is that we often feel closer to God in the garden. There is peace and refreshment in being outside and seeing life growing in the countryside and in our gardens. As every gardener knows, though, it is a struggle to keep the garden up to scratch. There are always slugs and snails to blight the leaves. So what can we learn from the flowers?

Quite simply that they have their beauty, texture, shade and their greenery. They all contribute to the beauty of the whole. Even ones with dull foliage. They compliment one another.

I sometimes want to imagine that we are a garden with all our strengths and weaknesses. What do we contribute to the human flower bed which is so close to God's heart? Some of our skills may not seem to be too obvious. Like some plants we may look a bit dull or be rather prickly but it is just those attributes which often provide support for the plants around them.

There is so much to rejoice in our own nature – and just give thanks for who we are and ask God's blessing on us.

May your garden keep bearing fruit in plenty

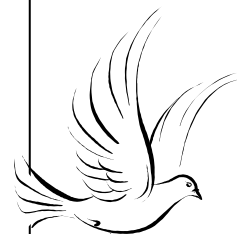
**Colin Fox**

### A Prayer



We thank God for another month of May  
We praise and bless you for your continued nurture  
and care as we grow in your kingdom  
We thank you for Jesus who through his life, death  
and resurrection opened the way to fullness of life

Amen



**ALL SAINTS ENFORD CHURCH****CHURCH SERVICES****May**

3<sup>rd</sup> 0900 Holy Communion  
 10<sup>th</sup> 1030 Benefice Service, Netheravon  
 17<sup>th</sup> 1030 Family communion  
 24<sup>th</sup> 1800 Evensong

**CHURCH CLEANING ROTA****May**

1<sup>st</sup> May Amanda Marx & Paula de Chalus  
 8<sup>th</sup> May Sarah Campbell  
 15<sup>th</sup> May Tessa Manser  
 22<sup>nd</sup> May Gai Rickett & Lowenna Harbottle  
 29<sup>th</sup> May Lyn Rich & Fanny Middleton

**June**

5<sup>th</sup> June Jean Kierney & Helen Hadfield  
 12<sup>th</sup> June Sue Poole – Warren & Hilary Horsford  
 19<sup>th</sup> June Amanda Marx & Paula de Chalus  
 26<sup>th</sup> June Sarah Campbell

**Christian Aid Week 10th – 16th May 2009****Keeping Hope Alive**

**There will be house-to-house collections in our villages again this year.  
 If you would like to help, please contact Pip on 01980 670782.**

Last Christian Aid Week we reclaimed around £1 million through Gift Aid. Gift Aid is a government scheme enabling Christian Aid to reclaim tax on donations made by UK taxpayers. This adds 28p to the value of every pound. All the supporter needs to do is to complete the simple declaration on the Christian Aid Week envelope. Christian Aid receives thousands of donations without Gift Aid declarations, each of which means less money to work with the world's poorest communities. So please take a moment to fill in the Gift Aid form, and encourage other people to do so. A minute of your time could help thousands of the world's poorest people.

Christian Aid is also campaigning to combat climate change as a matter of urgency. **Find out more by visiting [www.christianaid.org.uk/climate](http://www.christianaid.org.uk/climate) or [www.christianaid.ie/climate](http://www.christianaid.ie/climate)**

**News from Pewsey Children's Centre****Toy Library Dates**

**Tuesday 5th May - Figheldean**  
**Tuesday 12th May - Pewsey\***  
**Tuesday 26th May - Rushall (Scrapstore)**  
**Tuesday 2nd June - Figheldean**

**\*At Pewsey Primary School  
 (from 10.30-11.30) for this session only.**

Do you have children under the age of 5? Did you know that Pewsey Children's Centre covers the Enford area? Our aim is to reach all families in Pewsey and the surrounding villages and provide up to date information about services such as Health and Family Support – please call us and we will help direct you to any services you might need. We also provide an outreach programme taking activities and information out to villages, so look out for us in your area soon! The budget we have and the services we offer depends of the amount of families we have registered with us, and if you register now you will receive a FREE goody bag – either a Baby Safety Bag for under ones, or an Activity Rucksack for toddlers. Once registered, we can keep you informed on the many groups and activities that take place in the Pewsey Community Area. One of our activities is a mobile Toy Library, we currently visit Rushall Village Hall and Figheldean Village Hall on monthly basis – why not come along to find out more, and you can register there as well! For the dates of the toy library and any other queries please contact the Children's Centre Team on (01672) 564140. We look forward to hearing from you.



## CAR BOOT SALE

**SUNDAY 10<sup>TH</sup> MAY 7.30AM-  
1PM AT THE ANTELOPE INN'S  
CAR PARK, UPAVON, SN9 6EA.  
PRE BOOK A SPACE £5 OR ON  
THE DAY £7**

**TO BOOK CONTACT:-  
01980670897- 01980630656**

**THE ANTELOPE INN WILL BE  
OPEN FOR TEA COFFEE  
BREAKFASTS AND LUNCH ALL  
WELCOME**



.....

### AVONVALLEY LACEMAKERS COFFEE MORNING SATURDAY 9<sup>th</sup> May at 10 am AT PHOENIX HALL NETHERAVON

We are holding a coffee morning in the village hall in Netheravon, please come along and talk to us.

We are looking to recruit new members to join us in making bobbin lace, one of the oldest and most beautiful crafts. Anyone from 8 to 88 will find this a most rewarding hobby. Lace and equipment will be on display.

We usually meet on the second Saturday of the month from 9.30 to 12.00

.....

### ROWDEFORD GARDEN FAIR

Rowdeford School, Rowde, Devizes

**Sunday 17th May 2009 11 a.m.-3.30 p.m.**

*Specialist plants, accessories, horticultural advice,  
Garden bygones and antiques  
Live music, lunches, afternoon teas, Pimms  
Children's entertainment and bug hunt*

**£3 entry - 16 and under free. Free parking. Sorry, no dogs**

**Information and  
priority entry tickets from  
01249814979**

I thought that I would contact you all and request that you pass this warning on to all your scheme coordinators and their members. Over the past few days there have been a number of reports of persons receiving unsolicited telephone calls/doorstep callers from persons stating that they represent particular security companies. They are offering either a free alarm system or free monitoring and half price installation.

What they do not tell you is that you will sign up to a 5 year contract and if you take up the offer of a free alarm system there is a DAILY charge of £1.60.

It is concerning that these companies can purchase a database containing personal details.

The calls are considered to be in response to the Home Secretary publicly stating that burglaries were on the increase

I would recommend that if contacted by these companies you obtain the company details and telephone number and then inform them that you will be reporting the matter to Trading Standards.

Trading Standards will be able to take the complaints up with the regulatory body for the Security Industry.

Any person who is considering having an Intruder Alarm fitted is advised, in the first instance, to contact their Police Crime Reduction Officer who will provide relevant advice.

Crime Reduction Officers can be contacted through 0845 408 7000.

David J Budd

Crime Reduction/Neighbourhood Watch Liaison Officer

Wiltshire Police

David.Budd@wiltshire.pnn.police.uk  
www.nhw-wilts.org.uk



## WILTON WINDMILL VICTORIAN DAY

SUNDAY 10TH MAY 2009  
FROM 1PM TO 4PM

MEET HISTORIAN & ARCHAEOLOGIST **ALEX LANGLANDS**

FROM THE TV SERIES **'THE VICTORIAN FARM'**

LISTEN TO THE MILLER'S STORIES ABOUT LIFE IN VICTORIAN TIMES

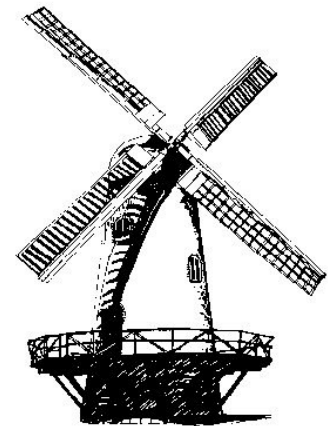
WATCH & JOIN IN WITH THE VICTORIAN WASHERWOMAN & THE TEACHER  
AS THEY GO ABOUT THEIR WORK

GET DRESSED UP - PRIZES FOR THE BEST DRESSED VICTORIANS

TRADITIONAL CRAFTS ~ GAMES & LONGBOW SHOOTING ~ STANDS & STALLS ~

MAKE BREAD FROM THE MILL'S OWN FLOUR

BARBECUE & REFRESHMENTS & MUCH MORE!



**Lots of fun for everyone!**

TICKETS IN ADVANCE WILL BE AVAILABLE FROM FRIDAY 24<sup>TH</sup> APRIL 2009 FROM THE FOLLOWING OUTLETS:

GREAT BEDWYN POST OFFICE

THE SWAN INN, WILTON

MARR GREEN FARM SHOP, BURBAGE

Ticket cost: Adults £4 each in advance, £5 each at the gate, children free

## Song on a May Morning

"Now the bright morning-star, Day's harbinger,  
Comes dancing from the East, and leads with her  
The flowery May, who from her green lap throws  
The yellow cowslip and the pale primrose.  
Hail, bounteous May, that dost inspire  
Mirth, and youth, and warm desire!  
Woods and groves are of thy dressing;  
Hill and dale doth boast thy blessing.  
Thus we salute thee with our early song,  
And welcome thee, and wish thee long."

John Milton, *Song on a May Morning*, 1660





# *Antiques & Collectors Fair*



Sunday 7<sup>th</sup> June

**Enford Village Hall**

10.00 am – 4.00 pm



Enquiries & Stall Bookings  
Contact: Dolly Décor Fairs  
01980 671090




# Moviola

★ ★ ★ ★ ★

**FILM NIGHT**

presents

## SLUMDOG MILLIONAIRE

**TUESDAY 9TH JUNE**

**DOORS OPEN 7PM. FILM STARTS 7:30PM.**

★ REFRESHMENTS AVAILABLE BEFORE FILM STARTS AND DURING INTERVAL. ★

**TICKETS £5 EACH IN ADVANCE, £6 ON THE DOOR.**

TICKETS AVAILABLE FROM:  
GILL GOULD 671462, MARGARET WEBB 670537, JUDY D'ARCY IRVING 670501

**NEXT FILM: YOUNG VICTORIA  
TUESDAY 7TH JULY  
DOORS OPEN 7PM**

**“JAZZ ON A MIDSUMMER EVENING”  
THE RED LION, EAST CHISENBURY”  
SATURDAY 20th JUNE 2009  
(7.00 pm till late)  
(Doors open from 6.15 pm)**



- ❖ In aid of ALL SAINTS' CHURCH, ENFORD
- ❖ Fab food and groovy Jazz!
- ❖ Marquee
- ❖ Admission strictly by ticket only
- ❖ Only £25.00 per ticket (under 18s just £10)



**Take a trip “Down the Mississippi”! Savour legendary Southern-style hospitality with a mouth watering buffet from Guy and Brittany (our very own celebrity chefs as featured in the “DAILY TELEGRAPH”, “OCELOT” and “FORK”) with a wonderful “Southern Welcome Buffet” served from 18:30 to 1:30, including:**

- Southern style ribs with home-made BBQ sauce
- Spicy Cajun chicken
- Seafood gumbo,
- Sides to include: coleslaw, rice and beans, black-eyed peas, cornbread.....
- Pecan Pie, Mississippi Mud Pie, Cheesecakes.....
- All usual bar facilities PLUS “Mis Brittany’s” very own Mint Juleps!!



**“The Red Lion Riverboat Stompers” - led by Alyn Ross and his amazing Professional Jazz Band make a welcome return to have your feet tapping all night to New Orleans jazz, Blues, Rock 'n Roll, Ragtime, R 'n B and more.....!!!!**

*Don't miss out – come on, boogie on down and enjoy a fabulous, foot-stomping evening of jazz and dancing for all!*



**BOOKING HOTLINE - 01980 671124**

(All Major Credit and Debit Cards accepted)

[enquiries@RedLionFreehouse.com](mailto:enquiries@RedLionFreehouse.com)

[www.RedLionFreehouse.com](http://www.RedLionFreehouse.com)



**ADULTS: £25 each**

**Under 18s: £10 each**

# The Enford, Chisenbury and Coombe Summer Fete 2009

AND

## THE GRAND OPENING OF OUR NEW VILLAGE HALL

WILL BE HELD ON

**SATURDAY 27th JUNE 2009**

**1 pm - 5pm onwards**

**Enford Playing Fields**

**ENTRY IS FREE**

**so bring your friends, family and dogs along!**

As well as lots of stands selling all sorts of things from home produce to Jewellery and animal products, other attractions include:

<b>Climbing Wall</b>	<b>Dog Show</b>	<b>Hair braiding</b>
<b>Dance sessions</b>	<b>Bouncy Castles &amp; Slides</b>	<b>Magic Shows</b>
<b>Bungee Run</b>	<b>Kids' football competition</b>	<b>Children's Novelty Races</b>
<b>Face Painting</b>	<b>Tug of War</b>	<b>Cricket Nets</b>
<b>Beer Tent</b>	<b>Hot Food</b>	<b>Football Penalty Shoot Out</b>

**TIMED PROGRAMME DETAILS WILL BE PRINTED IN THE NEXT EDITION OF THE NEWSLETTER**

**Enquiries:**

[enford-chisenbury-fete@live.co.uk](mailto:enford-chisenbury-fete@live.co.uk)

## ART AND PHOTOGRAPHY COMPETITIONS:

at

THE ENFORD, CHISENBURY AND COOMBE SUMMER FETE  
Saturday 27<sup>th</sup> June, 2009

### KIDS ART COMPETITION

This will be judged in 2 age categories: 4-6; 7-11

Subjects are:

"My Best Friend"



"Green Planet"

CALLING ALL  
YOUNG  
ARTISTS!

I could make something out  
of STUFF!!

"An Unusual Tea Party"

...not if you ARE a monster!



"A Famous Person"



At last!  
My chance for fame!

"An Illustrated Poem"

See below for details of submitting entries

### PHOTOGRAPHY COMPETITION - OPEN TO ALL AGES

This will be judged in 2 age categories: Under 16s and Over 16s

Subjects are:

"My Best Friend"

"Natural World"

"Cityscape"

"Salisbury Plain" "Live Action Shot" (e.g. sport/gig/concert)

NOTE: All photographs must have been taken in the last 12 months

Entries to both will be shown in the village hall on the day of the fete.

There will be a 1<sup>st</sup>, 2<sup>nd</sup>, 3<sup>rd</sup> place for each age category in both competitions with a PRIZE to the winners

Please deliver entries for both competitions by Friday 19<sup>th</sup> June to:  
Bridget Holden, 539 East Chisenbury, tel: 671 195

**!GOOD LUCK! AND WE LOOK FORWARD TO  
RECEIVING ALL YOUR ENTRIES**



## THE ENFORD, CHISENBURY AND COOMBE SUMMER FETE

Saturday 27th June, 2009

### INTER-VILLAGE TUG OF WAR COMPETITION

We would like to run a FUN intervillage Tug of War competition between Enford, East Chisenbury and Coombe at the Fete. We need 6 people on each team and if response is good we would like to run a mens and ladies competition!

OPEN TO ALL (As long as you are over 18)

To join a team please email:  
enford-chisenbury-fete@live.co.uk or call Simon on 671 206

Note: All participants will have to sign a disclaimer for insurance purposes in case of accidents

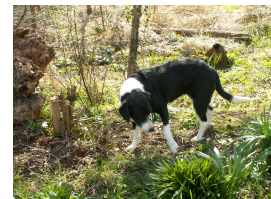
## THE ENFORD, CHISENBURY AND COOMBE FUN DOG SHOW

SATURDAY, 27th JUNE, 2009

1pm onwards

Enford Playing Fields

For Further information contact:  
Comfy Critters 01980 670458



### ENFORD - CHISENBURY GOLF – 3<sup>rd</sup> July 2009

The Enford and Chisenbury golf fun day out will be at the Upavon Golf Course on Friday 3rd July. Assemble at 12.00pm for a Tee Off at 12.30pm. The intention is for a minimum of 4 teams of 4 players to play the 18 holes.

Costs. The cost of the afternoon is £23 (£18 for the green fee and £5 for prizes). Any money remaining will be donated to the Village Hall and Church. Members of Upavon Golf Club need not pay the £18 green fee. All play will be off full handicap. Maximum handicap for gentlemen is 28 and 36 for ladies.

Application forms will be in the June Newsletter. Any queries please contact  
Adrian Orr on 670447 or PK Kenny on 670033



**It's is a new DATE so come and join us on a fun day out**



**Friday 3rd July 2009**

Hello Enford Parish Residents

### **The A345 Road Surface Conditions from Enford through to Netheravon.**

We are still complaining about the very bad conditions of the road surface but again we have been told that is no new funding to carry out the work required to improve this part of the highway. A point of note here Jane Scott leader of Wiltshire Council stated on BBC Radio Wiltshire recently that Unitary Council will bring fairness for all and that the New Council will make savings of 8 million pounds in the first year, she will be reminded of this in the coming future?. Especially regarding the A345 and the C32.

### **The A345 West Chisenbury and Newtown.**

As stated in the March Issue of the Newsletter, a letter was sent from the Parish Council on the 20th December 2008 requesting a review of the speed limit through these two areas, we are still pursuing the reduction of the speed limit through these two very dangerous areas of the A345 and we will keep you all informed.

### **The C32 Request for Traffic Calming re Meeting 8th August 2008.**

This is the same situation as above we had a bog standard reply from W.C.C. to the Parish Councils letter, this was after us having to remind them of the meeting that took place and the promises that they made for certain traffic calming measures that could be attained if the Parish contributed to it. This issue has been brought up at the Pewsey Area Community Planning Partnership and also at other meetings that have taken place since March 2009. We will get some action on this situation you can be sure of that.

### **Speeding and Enforcement.**

At the Pilot Pewsey Area Board Meeting at Bouverie Hall on 23/3/09, it was passed and agreed that the board should write a letter to the Chief Constable re-emphasising the need for additional policing support resources to deal with issues of speeding on rural roads in the Pewsey Vale area and it was requested that a copy of this letter should be sent to our local Member of Parliament.

### **Enford Community Speed Watch.**

This scheme is now working very well as stated in the last bulletin. We are now waiting for the police to come up with a date for another training session. We will keep everyone informed of this date. There was a Metro Count on the A345 at Enford Hill this March and it showed that 21,831 vehicles traversed the road in 7 days which is approximately 3,000 vehicles a day. We were told that we have had an effect on a reduction of speed through this area, albeit a small one, but it reflects on what the police say is also a contributing factor to the reduction of accidents. So we expect to improve on this. This scheme has been running now since last August so it would appear that some good has come out of the effort of the Watch Volunteers and I do thank them for their support and the fact that they have turned out on very cold misty mornings to get the watch completed. We are now waiting for the police to come back to us regarding extending the watch to the 30mph Zone in Long Street. The Metro loop has been deployed in East Chisenbury, so we are expecting the results back as soon as the loop has been lifted.

### **The Swan Accident.**

This is still ongoing and the Parish Council is awaiting a reply from the Chief Constable to this effect. You can be assured that we will pursue all avenues to get a satisfactory answer from the Wiltshire Police.

### **Boundaries and Board Meetings.**

Because of the Unitary Council, Enford is sort of living on the Edge. We are neither here nor there but somewhere in between. Ken Monk our Parish Chair and myself are going to attend all three meetings of the area boards at Tidworth (which we now come under) and Pewsey and Amesbury areas. The funding will come from Tidworth and because as far as roads go the A345 and the C32 runs from North to South, nothing much runs to the West only to the Impact Area and no one really wants to go through there do they? So we are keeping our noses in all three areas so as they know that Enford does really exist and that we do have real problems that have to be addressed.

### **The A342 Upavon Bridge Closure.**

We have made our views known to Wiltshire County Council and they are now aware fully of the problems that might arise for the C32. They have agreed to react should problems arise of an increase of vehicles using the "Rat Running" short cut from the A345 through the C32 to the A342. If anyone gets any problems or sees large unusual HGVs using the C32 during the closure time, please let me know and I will ensure that W.C.C. adheres to their promise.

Safe and Happy Motoring to All for the Summer Holidays.

Stan.W.A.Bagwell Enford Parish Council (Highways).

## **ENFORD FOOTBALL CLUB**

**The winners of the 200 Club Draw are as follows:**

**April**  
**200 Club Draw**

£50	45	Ray Taylor
£25	94	Andy Netherton
£15	57	Caroline Stagg
£10	76	Dave Growcott
£10	30	Melvin Young
£10	131	Nathan Arnold

**UPAVON GOOD COMPANIONS**

Anyone over 50 is welcome to join the Upavon Good Companions  
**The first outing is on Tuesday 10<sup>th</sup> May to Exbury Gardens**  
**Ach Fare £10, Gardens £7**



**Non-members are welcome to help fill the coach**

For further details please telephone  
 Noel - 01980 630436  
 or  
 Mo - 01980 630408

**The Book Club**

The Book Club meets once every two months to exchange opinions and review books that members have recommended. An excuse to meet over a glass of wine!!

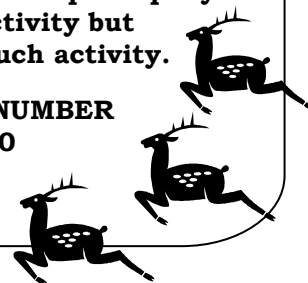


Anyone interested, please ring Vic on 01980 670928

**PLAINWATCH**

**PLAINWATCH is specifically designed to rapidly identify suspicious activity on the Plain: firstly and principally to identify criminal activity but secondly to deter such activity.**

**SPECIAL CONTACT NUMBER  
 01980 674700**



**FOR SALE**

Grundig Colour television 32"  
 £40.00 ono  
 Tel:( 01980) 670489



**MESSAGES FOR FRIENDS AND NEIGHBOURS**

**We would like to wish a very warm welcome to all who have recently moved into the Parish of Enford. We hope that you will find many new friends and neighbours**



**THANK YOU**

Thank you for all the get well wishes, the help and support from friends& family over the past 3 months since my operation. It was much appreciated  
 Many Thanks  
 Natalie Harris

**GET WELL to Mike Germany**

**GET WELL to Ann Houghton from all your friends on the committee**

**GET WELL to Phyllis Elkins**

**GET WELL to Steve Crompton**

**GET WELL to Martin Arris**

# WILTSHIRE LINK SCHEMES



In a period of declining rural services, seeing the closure of many post offices and changes to the provision of Health services, many older people are being adversely affected and suffering as a result.

Link schemes are volunteer run groups, based in local communities that offer help with transport and good neighbour tasks such as collecting prescriptions, shopping and calling in for a chat. These valuable schemes provide a service which enables many people to remain living independently in their own homes and maintain some quality of life and dignity.

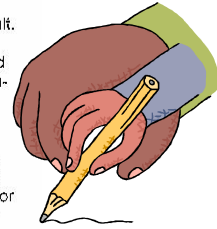
During this difficult period the Link schemes have seen a steady increase in the amount of requests for help and transport from those most vulnerable in our communities. Every week over 900 people, mainly our older residents, are helped to do those things which most of us take for granted. Indeed for many clients the friendly voice and face of a Link volunteer is often the only social contact they may have with their community. Requests for good neighbour help and transport assistance range from helping to change a light bulb to getting to the hospital for an out-patient appointment but regularly include:

- Getting to medical appointments
- Help shopping for food
- Reading requests
- Transport to luncheon clubs and other social events

Each of the 1400 volunteers (approx) throughout Wiltshire make a small contribution which improves the lives of many clients. Existing volunteers get a great deal of pleasure from their work with Link and new volunteers are always welcome. As well as being looked after, appreciated and supported Link volunteers:

- Are reimbursed their expenses
- Decide their own availability and interests
- Achieve an enormous sense of well-being and community spirit
- Make new friends
- Keep active
- Feel valued

Your support, publicity and encouragement of your local Link scheme is welcomed. If you have any questions or comments about either your local Link scheme or the Countywide support organization, The Link Project, then please contact us on: 01380 722241



**COMMUNITY  
FIRST**

Wiltshire Community First

[wiltlink.org.uk](http://wiltlink.org.uk)

## BUS SERVICES

### SERVICE 210 ENFORD TO DEVIZES THURSDAYS AND SATURDAYS

#### OUT

Enford Bus Shelter	09:31
Enford Corner	09:34
East Chisenbury	09:38
Upavon Avon Square	09:42
Upavon, Ship Inn	09:45
Devizes Market Place	10:24

#### RETURN

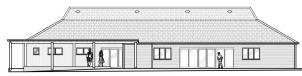
Devizes Market Place	12:30
Upavon, Ship Inn	13:07
Upavon Avon Square	13:10
East Chisenbury	13:13
Enford Corner	13:17
Enford Bus Shelter	13:18



#### Please Note!

**Return Fares from Enford, East Chisenbury or Upavon to Devizes  
£6.00 Adult, £2.25 Child.**

**With a valid Wiltshire Fare pass anyone over 60  
can now travel FREE ! (instead of half-fare) on this service.**



## ENFORD VILLAGE HALL USER GROUP SCHEDULE TO DATE

Day	Activity	Time	Contact
Monday	Tatty Bumpkins	10.00am – 12.00noon (weekly, term time)	class@northwiltshire.tattybumpkin.com 0845 6804658
Tuesday	Pilates	9:15am – 10:15am weekly, term time	Tiggy Martin 01980 670438 tiggymartin@tiscali.co.uk
Tuesday	Bridge Club	10.45 am- 12.45pm (Sept15,22,29 & 6 Oct )	Jeni Scott Dalgleish 01980 670210 Jscottdalgleish@aol.com
Wednesday	Tatty Bumpkins	10.0am – 12.00noon (weekly, term time)	class@northwiltshire.tattybumpkin.com 0845 6804658
Wednesday	Flower Arranging	2.30pm – 4.30pm (2nd Weds in month from Sept)	Ann Merrett 01980 671231 eagleann39@aol.com
Wednesday	Short Mat Bowls	7.00pm – 10.00pm (from Sept)	David Spencer 01980 670526 spencersgb@yahoo.co.uk
Thursday	Pilates	8:30am – 9:30am (weekly, term time)	Nicci Caswell 01980 670382 niccicaswell@btopenworld.com
Thursday	Yoga	11.15am -12.12am (starting 3 <sup>rd</sup> Sept,term time)	Debby Wilkinson 07505 142285 debby@fulcrumyoga.co.uk
Thursday	Photography Club	8.00pm – 9.00pm (1 <sup>st</sup> Thursday in month from Sept)	Martin Webb 01980 670537 webb14@btinternet.com
Thursday	Gardening Club	8pm – 9pm (3 <sup>rd</sup> Thursday monthly, all year)	Gill Gould 01980 671462 the.goulds@lineone.net
Friday	Stretch and Tone	9:30am – 10:30am (weekly, term time)	Julia Fielden 07904 118 215 julia@bodydynamics.co.uk
Friday	Youth Club	6:30pm – 9pm (fortnightly, term time /holiday activities)	Emma & Peter Jefferies 01980 670045 emmajefferies@btinternet.com

There is also interest in Mini Tennis.

We are building up a team of adult helpers for the Youth Club. We would love to hear from anyone who is interested and who can commit to one Friday a month.

Enford Football Club are planning to move back next season, and plan to introduce Junior football once they are up and running.

**There will be a Toy Library session, for one day only, on 18th August. Timings tbc**

If you are interested in attending any of these, want to book in your own activity, or have any ideas or suggestions, please contact Gill Gould (01980 671462, the.goulds@lineone.net) or Margaret Webb (01980 670537, webb14@btinternet.com)

**\*\*\* Several people have already booked the hall for private events in 2009! If you are thinking of holding a private party or event at the hall, we recommend you contact us soon to check the availability of your preferred date\*\*\***

**COMING SOON AT THE VILLAGE HALL***"Cutting edge, comprehensive self defence training"*

Yuichiro Kishigami 2002 British Open Kendo Champion

**ABSOLUTE DEFENCE****Monday Evenings  
7-9pm****Six Sessions  
Starting on 8th June****Intelligent Self Protection For Women**

Topics covered on the course include:

- *Avoidance*
- *De-escalation*
- *Conflict Management*

Techniques that are **easy** to remember and **easy** to perform

This cutting edge self protection course is specifically tailored for women. The programme is scientifically based and researched and contains concepts not found on any other self defence courses. It teaches specially developed techniques which are effective irrespective of size, strength or fitness.

\*£10 discount with this flyer

**Call Ollie Braithwaite**  
on 07885 99 2000  
**or email at**  
jrob6000@hotmail.co.uk

**ARE YOU A BRIDGE PLAYER??**

Nemmy Elliot, local Bridge teacher, will be offering instruction / revision for 3 – 4 tables from September 2009 in the Village Hall.

<b>Dates:</b>	<b>15, 22, 29 September, 6 October 2009</b>
<b>Days:</b>	<b>Tuesday mornings</b>
<b>Time:</b>	<b>10.45 am – 12.45 pm</b>
<b>No of Sessions:</b>	<b>Four</b>
<b>Cost:</b>	<b>£8.00 a session</b>

We would prefer you to reserve a table of four players or, if that isn't possible, we will try to find players of a similar ability for you to play with. You may book one or more sessions for your group. Bridge tables and chairs available at the Hall.

Please call Jeni Scott Dalglish on 01980-670210 to reserve your place.

**New – ENFORD SHORT MAT BOWLS CLUB**

A Short Mat Bowls Club will be opening in our lovely new village hall.

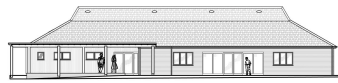
Bowling is a sociable, fun game so do come along for a 'taster' evening on Wednesday 2<sup>nd</sup> September at 7.30 pm.

Everybody welcome – no previous experience required!

Cost: £3 per evening

Phone David or Ros .... for more details (01980 670526)

\*\*\*\*\*



## **ENFORD VILLAGE HALL**

### **PROJECT UPDATE FROM THE TRUSTEES**

We are now entering the last month of the construction and by the end of the month our new Hall will be open for business! Please do come and support your new Hall by joining some of the new classes or special interest groups. Don't forget the European Elections & Unitary Authority Elections on June 4th – a good excuse to come and look at the Hall for yourselves!!

April has been a busy month with the completion of the car parking area, the storage extension, the beginning of the installation of the kitchen and continuing decoration throughout. The toilet cubicles and sanitary ware plus the sewage treatment system have been installed. In the last week of April the installation and commission of the ground source heat pump takes place followed by the connection of the electricity in the first week of May. The underfloor heating can then be turned on prior to the final flooring going down two weeks later. We expect to be taking over the building in the third week of May.

For the trustees, it has been very exciting watching the final touches to a project which, for many of us, has been in the planning for far too many years! It has been a huge commitment, both in terms of time and energy, but one which we hope will be enjoyed by residents for this and future generations. We are grateful to all our funders, particularly Kennet District Council, who have provided so much support and invaluable advice as well as the bulk of the funds.

### **THE PREMISES LICENCE**

Following the Licensing Act 2003, Village Halls are required to hold either a Premises Licence or apply for a Temporary Event Notice (TEN) for every event providing 'regulated' entertainment (films, plays, music, dance, indoor sports etc) and the sale of alcohol. As there is a limit of 12 per year for the TENs, the Village Hall Committee have decided it is essential to apply for a Premises Licence. The new Act requires that our Licence is accompanied by a Designated Premises Supervisor (DPS) who has ultimate responsibility for the licensable activities. The DPS must hold a Personal Licence and we are delighted that Paul Jackson of the Swan has agreed to be our Personal Licence holder. Until we receive our Premises Licence, the use of TENs will continue. It must be noted that there will be a charge of £21, in addition to the Hire Charge, for any event which is selling alcohol or providing 'regulated' entertainment to cover the licence costs.

Full information will be given to potential Hirers at the time of booking but if you would like further information on the Premises Licence/Licensing Act 2003, please do have a look at [www.wiltshire.gov.uk](http://www.wiltshire.gov.uk) and follow the links.

**As always, if you would like to get involved in any way at all or would like to give us advice, please call/email any of the Trustees direct (listed in the Newsletter and in the Address Book) or email to [enfordvillagehall@btinternet.com](mailto:enfordvillagehall@btinternet.com).**

#### **NOTE FROM THE TRUSTEES OF ENFORD VILLAGE HALL**

**The Trustees would like to reassure everyone that the construction of the new Hall, and all the equipment associated with it, has been totally funded by grants from various organisations as well as fundraising from within the community. The Parish Council has kindly increased their annual maintenance contribution from £650 to £900 for 2009. If anyone has any queries regarding the financing of the construction, please contact Judy D'Arcy Irvine, Chairman on 01980-670501 who will be delighted to provide further information.**

## ENFORD VILLAGE HALL

### HIRE CHARGES FOR 2009

A continuous review of Wiltshire Village Halls' charges has been taking place in order to ensure that we are offering competitive rates as well as providing a sufficient level of income to maintain and service the Hall and playing fields. Throughout 2009, we will continue to monitor the running costs and hirings, and charges may be adjusted (up or down) for 2010. The more we use the Hall, the lower the prices will be! Note that there are a) Residents / Regular User rates and b) a higher scale of rates for Non-Residents. Commercial users will be charged at the Non-Resident Rate plus 20%.

#### RESIDENTS' AND REGULAR USERS' RATES:

<b>ENFORD VILLAGE HALL</b> <b>SCALE OF CHARGES – MAY 2009</b> <b>(Residents' / Regulars' Rates)</b>			
	Hourly Rate (see 1 below)	Session Rate (see 2 below)	Function Rate (see 3 below)
<b>BOOKING OFFICER: TEL: 01980-670501</b> <b>Email: enfordvillagehall@btinternet.com</b>			
a) Main Hall, Conference Room	10.00		
b) Conference Room, Kitchen	10.00	25.00	
c) Main Hall, Conference Room, Kitchen	12.00	30.00	95.00
d) Exclusive Use of Whole Building (inc Changing rooms)	15.00	40.00	110.00
e) Pitch & Changing Rooms			
i) Adult		20.00	
ii) Youth		17.00	
f) Exclusive Use of Whole Building (inc Changing Rooms - 0800-2330)			150.00
<b>NOTE: Rates include Electricity, Heating &amp; Hot Water but NOT the cost of Temporary Event Notices. Please check with the Booking Officer who will advise you if your event requires a T.E.N. and how to apply.</b>			
<b>1. Hourly rates apply to bookings by local residents, regular bookings by organisations for the purposes of ordinary meetings and/or activities attended by their members, regular bookings for classes (educational or physical). Rate includes 15 minutes setting-up/clear-down time.</b>			
<b>2. The Session rate applies to childrens' parties (up to 13 years); morning/afternoon/evening activities open to the public (i.e. NOT private parties).</b>			
Morning: 0830 -1230 hrs	Afternoon: 1330 - 1800 hrs	Evening: 1830 – 2330 hrs	
<b>3. The Function rate applies to all evening functions not covered by (1) or (2). IT IS A CONDITION OF BOOKING THAT THE BOOKINGS OFFICER IS ADVISED IF THE FINISH TIME IS LATER THAN 2330 HOURS. LATE SESSIONS ARE AT THE DISCRETION OF THE BOOKING OFFICER / MANAGEMENT COMMITTEE.</b>			
<b>NOTE: A DEPOSIT OF £25 IS REQUIRED AT THE TIME OF BOOKING OF ANY FUNCTION WHICH INCLUDES THE SERVING OF FOOD OR DRINKS</b>			

#### NON – RESIDENTS' RATES:

<b>ENFORD VILLAGE HALL</b> <b>SCALE OF CHARGES – June 2009</b> <b>(Non Residents' Rates)</b>			
	Hourly Rate (see 1 below)	Session Rate (see 2 below)	Function Rate (see 3 below)
<b>BOOKING OFFICER: TEL: 01980-670501</b> <b>Email: enfordvillagehall@btinternet.com</b>			
a) Main Hall, Conference Room	14.00		
b) Conference Room, Kitchen	14.00	35.00	
c) Main Hall, Conference Room, Kitchen	16.00	45.00	120.00
d) Exclusive Use of Whole Building (inc Changing Rooms)	18.00	60.00	180.00
e) Pitch & Changing Rooms			
i) Adult		30.00	
ii) Youth		17.00	
f) Exclusive Use of Whole Building (inc Changing Rooms - 0800-2330)			220.00
<b>NOTE: Rates include Electricity, Heating and Hot Water but NOT the cost of Temporary Event Notices. Please check with the Booking Officer who will advise you if your event requires a T.E.N. and how to apply.</b>			



**SALISBURY PLAIN TRAINING AREA  
NEWS SHEET  
May 2009**



This forecast shows our planned training. Unfortunately operational requirements mean that dates and times can change. The warning flags and signs show the actual range danger areas on a given day. Late night firing times Tues, Thurs and Sat March to October 2330hrs and November to February 2100hrs inclusive.

Any general comment about military training should normally be made through Parish Councils to the Liaison Officer nominated by the appropriate Garrison Headquarters. Any specific complaint should be made in writing or if urgent by telephone as shown below:

**HEADQUARTERS SALISBURY PLAIN TRAINING AREA  
Westdown Camp, Tilshead, Salisbury, Wiltshire SP3 4RS**

**Telephone: Stonehenge (01980) – 620819**

**TRAINING:** Over the May bank holiday and for the remainder of the week the final phase of a TESEX for the Household Cavalry Regiment and 2 YORKS will run across the whole of the Plain. This will be followed by a period of Squadron and Company training by armoured and mechanised infantry units before, in the week starting Monday 18th May, a large armoured exercise from the Land Warfare Centre begins. At the same time 2 R WELSH from Tidworth start a 2 week armoured infantry battle group exercise which runs through the late May bank holiday period.

<b>ARTILLERY LIVE FIRING FROM SALISBURY PLAIN (WEST) (AS90)</b>	NIL
<b>LATE FIRING DAYS ON SALISBURY PLAIN (WEST) (AS90)</b>	NIL
<b>ANTI TANK FIRING DAYS ON SALIBURY PLAIN (WEST):</b>	NIL
<b>ARTILLERY LIVE FIRING DAYS FROM AREAS 6, 7 &amp; 8</b>	NIL
<b>ARTILLERY FIRING FROM SALISBURY PLAIN (EAST)</b>	NIL
<b>LATE FIRING FROM SALISBURY PLAIN (EAST)</b>	NIL
<b>LATE FIRING DAYS LARKHILL/WESTDOWN RANGES</b>	5, 7, 12, 14, 16, 19, 21, 26, 28
<b>NON FIRING DAYS LARKHILL/WESTDOWN DANGER AREA</b>	2, 3, 4, 9, 10, 23, 24, 25, 30, 31
<b>NON FIRING DAYS BULFORD RANGES</b>	2, 3, 4, 9, 10, 16, 17, 23, 24, 25
<b>NON FIRING DAYS ON WARMINSTER RANGES</b>	2, 3, 4, 9, 10, 23, 24, 25, 30, 31.

**NOTE:** Due to unforeseen changes there is always a possibility that there could be firing on other of the days listed. This is particularly so now operational training is being conducted to meet many and varied exigencies. The public should be careful to check that Red Flags are not flying before they enter the range. It is the time of the year when we change late night firing times. From March through to October the Tue, Thurs and Sat night firing times will revert back to 2330hrs.



**HELICOPTER NIGHT FLYING :** Night flying normally takes place Mondays to Thursdays inclusive over parts of SPTA. Some aircraft will show no lights but all will operate under strict area control.

**AIR ACTIVITIES :** Dates and timings given below are those listed at the time of printing but may be altered due to aircraft serviceability or weather conditions.

**AIRCRAFT TRIALS:**

Aircraft may conduct trials over Larkhill Range on each Wed and Fri from 1200 - 1700 hrs which could involve circuits to the East crossing the Avon Valley.

**PARACHUTING.** : Parachute dropping is scheduled to take place on EVERLEIGH and FOX COVERT DZs during normal working hours on most weekdays. Outside working hours and at weekends the dates and approximate times are:

**FOX COVERT DZ (C130)**

1<sup>st</sup> - 24 Hours  
 8<sup>th</sup> - 24 Hours  
 9<sup>th</sup> - 24 Hours  
 10<sup>th</sup> - 24 Hours  
 11<sup>th</sup> - 24 Hours  
 14<sup>th</sup> - 24 Hours  
 15<sup>th</sup> - 24 Hours  
 16<sup>th</sup> - 24 Hours  
 17<sup>th</sup> - 24 Hours  
 19<sup>th</sup> - 24 Hours  
 21<sup>st</sup> - 24 Hours  
 27<sup>th</sup> - 1800 - 28<sup>th</sup> - 0800  
 28<sup>th</sup> - 24 Hours  
 29<sup>th</sup> - 24 Hours  
 30<sup>th</sup> - 24 Hours  
 31<sup>st</sup> - 24 Hours

**PARACHUTING****IMBER DZ (C130)**

NIL NOTIFIED

**EVERLEIGH DZ (C130)**

1<sup>st</sup> - 24 Hours  
 8<sup>th</sup> - 24 Hours  
 9<sup>th</sup> - 24 Hours  
 10<sup>th</sup> - 24 Hours  
 11<sup>th</sup> - 24 Hours  
 14<sup>th</sup> - 24 Hours  
 15<sup>th</sup> - 24 Hours  
 16<sup>th</sup> - 24 Hours  
 17<sup>th</sup> - 24 Hours  
 19<sup>th</sup> - 24 Hours  
 21<sup>st</sup> - 24 Hours  
 27<sup>th</sup> - 1800 - 28<sup>th</sup> - 0800  
 28<sup>th</sup> - 24 Hours  
 29<sup>th</sup> - 24 Hours  
 30<sup>th</sup> - 24 Hours  
 31<sup>st</sup> - 24 Hours

**STRIP LANDINGS****DEPTFORD DOWN (C130)**

8<sup>th</sup> - 1830 - 2215  
 9<sup>th</sup> - 0030 - 0300  
 21<sup>st</sup> - 0001 - 0100

**UPAVON (C130)**

6<sup>th</sup> - 1930 - 2359  
 7<sup>th</sup> - 1630 - 2345  
 18<sup>th</sup> - 1630 - 2230  
 19<sup>th</sup> - 1630 - 2230  
 21<sup>st</sup> - 1630 - 2230  
 26<sup>th</sup> - 1400 - 1530  
 27<sup>th</sup> - 2230 - 2359  
 28<sup>th</sup> - 1400 - 1530

**KEEVIL**

NIL

**FAST JET ACTIVITY (FGA)****SPTA 'W'**

1<sup>st</sup> - 0730 - 0830  
 4<sup>th</sup> - 0800 - 1700  
 5<sup>th</sup> - 1700 - 1900  
 7<sup>th</sup> - 0730 - 0900

**SPTA 'E'**

1<sup>st</sup> - 0730 - 0830  
 5<sup>th</sup> - 1700 - 1900  
 7<sup>th</sup> - 0730 - 0900

**SPTA 'C'**

1<sup>st</sup> - 0730 - 0830  
 4<sup>th</sup> - 0800 - 1700  
 5<sup>th</sup> - 1700 - 1900  
 7<sup>th</sup> - 0730 - 0900



COMPLAINTS MAY BE TELEPHONED THROUGH TO  
 STONEHENGE (01980) 620819 AT ANY TIME

**PLAINWATCH NUMBER 01980 674700**

**PLAINWATCH is specifically designed to rapidly identify suspicious activity on the Plain: firstly and principally to identify criminal activity but secondly to deter such activity.**

We seek the support of those Parishioners who regularly use the Plain for recreational purposes, who when doing so spot what could be termed suspicious or even criminal activity taking place. No approach or contact should be made with potential offenders. If such an opportunity occurs we would be pleased to hear from you via a special telephone number which we have set up within our 24 hour Operations Cell: **01980 674700**. We would welcome your assistance in making the Plain more secure and a safe place to enjoy.

**POLICE WARNING**

THIEVES OPERATE ON THE TRAINING AREA  
 SECURE YOUR VEHICLES AND EQUIPMENT  
 AT **ALL** TIMES

# Advertising

For just a few pounds you can place  
an advertisement  
in the Enford Newsletter.

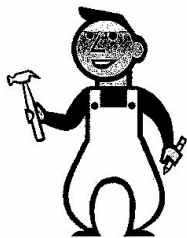
£15 per small square for 10 issues

£30 per half page for 10 issues

£5.00 per half page (1 issue)

£10.00 per page (1 issue)

Please contact Peggy Waterkeyn 01980 670418



## MIKE TAYLOR CARPENTER

ROOFING

KITCHEN FITTING

CERAMIC TILING

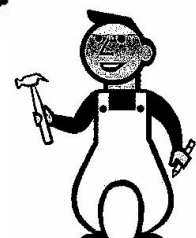
GENERAL BUILDING

PATIOS

FENCING

ENQUIRIES WELCOME with regard to all aspects of construction and  
maintenance

Please ring 01980 670969 or 07543834684



**AGRICENTRE**

*Now stocking Frontline for cats and dogs  
at an unrivalled price  
Excellent products at an excellent price from  
well-known horse wormers  
Electrical fencing  
Complete range of Briswim pool chemicals*

**FREE HOME DELIVERY!**

Contact: Justin Young, A.M.T.R.A., SQP  
(Branch Manger)

**07850 184111  
01722 320316**



**OIL TANKS**



YOUR LOCAL OIL TANK REPLACEMENT SPECIALISTS



- COMPETITIVE PRICES
- DOMESTIC & COMMERCIAL
- FULL REPLACEMENT SERVICE
- FRIENDLY & RELIABLE
- FREE QUOTATIONS

**TELEPHONE 01985 248 555**

[www.tankservices.co.uk](http://www.tankservices.co.uk) Deptford Farm, Wyltye, Wiltshire, BA12 0QQ

**Pet Care Services**

- Pet Sitting*
- Home Sitting*
- Pet Taxi*
- Dog Walking*

**Mobile Pet Grooming**

- Warm Water Hydrobath*
- Full Grooming*
- Nail Clipping*



Established in February 2005 and based from our own village of Enford, Comfy Critters aims to bring piece of mind to pet owners in our rural communities

Mob: 07789 378413

Tel: 01980 670458

[www.comfycritters.co.uk](http://www.comfycritters.co.uk)

Member of National Association of Pet Sitters



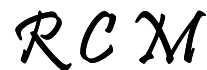
**Avon Valley Chauffeur Service**

- ❖ Airports & stations
- ❖ Hotels & restaurants
- ❖ Schools & colleges
- ❖ Business appointments
- ❖ Hospitals & doctors
- ❖ Special occasions



**01980 630094**

[avc@avonvalleychauffeurs.co.uk](mailto:avc@avonvalleychauffeurs.co.uk)



**Plumbing & Heating**

- Kitchens • Heating systems • Competitive rates • General maintenance • Bathroom shower pumps • New and replacement bathrooms • Tiling • New and replacement cylinders (vented and unvented) • Fully Insured

24 hour callout

Tel: Russell McBride 07758 228 743

## iT SOLUTIONS

Tel: 07867 988140  
[www.ManageIT.info](http://www.ManageIT.info)

Your local computer and internet experts friendly, professional & affordable advice for home & small business users

**Do you need help with ...**

- Internet, Broadband & Wireless connection problems?
- Database management?
- Linking various computers together?
- Converting to / from Mac?
- Tailor-made systems?
- Just getting your computer to do what you want it to?

**Help is at hand – just telephone now!**

BEAUTY THERAPY • AROMATHERAPY  
 REFLEXOLOGY • INDIAN HEAD MASSAGE  
 Facials • Manicures • Pedicures  
 Massage • Waxing  
 Bridal Makeup

Gift  
Vouchers  
available



Make-up  
Advice &  
Lessons

**Jennie Aird Gauntlett**

ITEC BAPTAC MIFHB MIGHT IHHT

A full complement of beauty treatments for Face and Body  
 To make an appointment call 01672 851445

*“ 14 years in the area ”*

**For just a few pounds you can place  
 an advertisement  
 in the Enford Newsletter.**

**£15 per small square for 10 issues**

**£30 per half page for 10 issues**

**£5.00 per half page (1 issue)**

**£10.00 per page (1 issue)**

**Please contact Peggy Waterkeyn 01980 670418**

# D Taylor

**Building Services  
 Bricklayer & General Builder**

**All Building Works undertaken  
 Including Extensions, Garden Walls, Patios,  
 Roof Repairs, Plastering  
 Floor & Wall Tiling etc**

**01980 671078  
 Mobile No: 07719916854**

# *Carpet Clean*

*Ricky Flint*

*Est 1997*

*Friendly Local Service*

*Carpetclean@btinternet.com*

*Great Bedwyn 07799 215837*

# The Swan Inn at Enford

**Open for Lunch and Dinner every day**

**Try our Quiz Night every Tuesday! Starts 9.30pm £1.00 entry per person  
(teams of up to 4)**

**Great for Sunday Lunch**

**A choice of Roast Sirloin of Beef, Leg of Lamb or Loin of Pork**

**Plus**



**Specials every Sunday**

**Outside Catering can also be arranged on request**

**Call Clare or Paul on 01980 670338 to book**

**Email: Pauljacson5@btconnect.com**

**Full Menus on our website: [home2btconnect.com/theswaninnatenford.co.uk](http://home2btconnect.com/theswaninnatenford.co.uk)**

## M NASH & P WILKINS

ALL LANDSCAPING WORK UNDERTAKEN  
 FENCING\*PATIOS\*PATHS\*PONDS\*  
 BRICKWORK  
 HEDGECUTTING\*GARDEN CLEARANCE  
 GRASSCUTTING

Tel: **MIKE 01380 840767**  
 Mobile: **07977 950654**

Tel: **PAUL 01380 840763**  
 Mobile: **07970 557002**



## CAN I HELP?

CONSERVATORY CLEANING  
 WINDOW CLEANING  
 &  
 GENERAL MAINTENANCE

Using state of the art ladder systems I can reach every part of your conservatory. I also carry out normal window cleaning service and can turn my hand to most general maintenance tasks in the home and garden

All work is guaranteed.  
 For free quote  
 and written estimate if requested  
**Contact Peter 07875 238730**

MODERN & TRADITIONALLY  
 DESIGNED MEMORIALS

### M J SLY

Monumental Stonemason

New Memorials, Additional Inscriptions  
 Restorations, Free Home Visits  
 Free Brochure

Marlborough **(01672) 516797**

Email: [martin@mjsly.co.uk](mailto:martin@mjsly.co.uk)

Website: [www.mjsly.co.uk](http://www.mjsly.co.uk)

Workshop & Showroom at Pelham Court,  
 London Road,  
 Marlborough, Wiltshire

## ELSTON VETERINARY CLINIC

ELSTON LANE, SHREWTON

Dr. Enid Frantilla, DVM MRCVS

Small Animal Medicine and Surgery

Providing high quality pet healthcare  
 and a caring, friendly professional service  
**HELPING YOU TO HELP YOUR PETS!!**

Consultations by appointment, Mon-Sat

For appointments or enquiries, and  
**24 HOUR EMERGENCY SERVICE**

**01980 621999**

## ROD SMITH

The Garage  
 Netheravon

UNIPART CAR CARE CENTRE

MOT Tests  
 Car Repairs & Servicing

Now able to service air conditioning units  
 Batteries, Exhausts & Tyres at Competitive Prices  
 Handy Gas

Tel: Stonehenge **(01980) 670348**

# OSCAR

Your Local Pet Food Supplier



Quality Pet Food  
 Delivered **FREE** to your Door

- Healthy Food for contented pets
- **FREE** Nutritional and Behavioural Advice
- **FREE** samples to try before you buy
- Full range of Pet Health Care Products and Treats
- Variety of Small Animal and Bird Foods

Oscar foods are GM monitored and not tested on animals.

Contact your Local Nutritional Advisor  
 Jo Stow • T 0845 201 1272 • M 07767 784550



[www.oscarf.co.uk](http://www.oscarf.co.uk)

FOR A HAPPIER HEALTHIER AND LONGER LIFE



\*\*\*\*\***B J LONG**\*\*\*\*\*

( **AKA BERTIE** )

*Live music from the 1950s 60s 70s*

**FOR BOOKINGS**

**01980 670767**

**0772 4104106**

**E-Mail: [bjlong@hotmail.co.uk](mailto:bjlong@hotmail.co.uk)**

## Redmayne-Bentley Stockbrokers

REDMAYNE  
BENTLEY  
STOCKBROKERS

*Your friend on the Stock Exchange*

To discuss how we can help, please contact either  
Hugh Lancaster or Gerald Lowes

**Telephone:** 01488 686400

**Email:** [Hungerford@redmayne.co.uk](mailto:Hungerford@redmayne.co.uk)

**Visit:** [www.redmayne.co.uk/hungerford](http://www.redmayne.co.uk/hungerford)

BEST ADVISORY BROKER  
**INVESTORS INVESTMENT**  
CHRONICLE AWARDS 2008  
SILVER AWARD



2003-2007: BEST ADVISORY BROKER

VAT No: GB 613 139 763. Members of the London Stock Exchange  
Authorised and Regulated by the Financial Services Authority

**WORRIED ABOUT INLAND REVENUE  
SELF-ASSESSMENT?**

*Why not talk to a commercially-experienced  
Chartered Accountant? Local help is at hand.*

### **MERPEN ACCOUNTING**

*Accountancy & Small Business Advisory  
Management*

*\*Hands-on help \*No job too small \*Even part-time,  
money-making hobbies \*Initial discussions free of  
charge \*Further work done professionally for probably  
the lowest fees around*

*Alan Merrett FCA*

*Eagle Lodge, East Chisenbury, Pewsey, SN9 6AQ*

**Tel: 01980 671441**

**[www.pewsey-uk.co.uk/merpen-accounting.html](http://www.pewsey-uk.co.uk/merpen-accounting.html)**



**For just a few pounds you can place  
an advertisement**

**in the Enford Newsletter.**

**£15 per small square for 10 issues**

**£30 per half page for 10 issues**

**£5.00 per half page (1 issue)**

**£10.00 per page (1 issue)**

**Please contact Peggy Waterkeyn 01980 670418**

## **SUCOL Solutions**



Home PC Tuition and Setup  
Home Network Setup  
Data Storage and Backup  
Small Business Server (SBS)  
PC and Server Repairs  
Network Infrastructure  
Design and Installation  
CAT5e Cabling  
IT Consultancy

**Colin Mundy**

22 Willow Drive  
Durrington  
Salisbury  
Wiltshire  
SP4 8DE

Tel: 01980 594368  
Mob: 07989 261778  
Email: [colin.mundy@ntlworld.com](mailto:colin.mundy@ntlworld.com)

## **Bits & Pieces** (Durrington Ltd)

***BUILDING, GARDENING & DIY***

***PETS, PANELS, AGGREGATE***

**37 - 39 Bulford Road, Durrington  
Wiltshire SP4 8DL**

**Tel: 01980 655552**

**Fax: 01980 652351**

**Proprietors: P & M Conn**

# DJ Landscaping

**No Job Too Big Or Small  
Just call us we do it all**

- Lawn Mowing
- General Tidying
- Hedge Cutting
- Turfing
- Fencing
- Ponds
- Paths
- Brick Works
- Leaf Collection
- Pruning
- Weeding
- Decking
- Patios
- Pergolas
- Driveways

Free estimates, Hourly Rates  
Regular appointments are available

**Call the company you can trust**

Tel: 01980 846740

Mob: 07717 831907

For just a few pounds you can place  
an advertisement

in the Enford Newsletter.

£15 per small square for 10 issues

£30 per half page for 10 issues

£5.00 per half page (1 issue)

£10.00 per page (1 issue)

Please contact Peggy Waterkeyn 01980 670418



## MOBILE HAIRDRESSER

Ring Donna

on

07711 579403

## KD WORSDELL

**Carpentry & Joinery  
Building Works & Maintenance  
Bathrooms and Kitchens**

**Please Call**

**01980 630545**

**Or**

**07759 586162**

## CHINA RESTORATION

Specialist in Antiques & Figurines

24 Years Experience

Workshops Arranged Throughout The Year

Tel: 01672 851445

Web: crackedpots.co.uk

# G. B. Chamberlain

## Flooring Specialist

Specialising in Ceramic  
Floors and Walls

Tel: 07971 182752

24 hour answer service

## OIL FIRED BOILERS

**For prompt reliable –  
SERVICING  
REPAIRS  
COMMISSIONING**

**Call Tim Walsh**

**Tel. 01980 652803  
Mobile 07919603884**

## FRED MONRO

### Contemporary Interiors

**Bespoke carpentry  
Made-to-measure kitchens and furniture  
Affordable prices  
Free quotations**

**Call: 07717 416423  
Email: fred@fredmonro.co.uk  
www.fredmonro.co.uk**

**Made-to-measure kitchens and furniture**



**For just a few pounds you can place  
an advertisement  
in the Enford Newsletter.  
£15 per small square for 10 issues  
£30 per half page for 10 issues  
£5.00 per half page (1 issue)  
£10.00 per page (1 issue)  
Please contact Peggy Waterkeyn 01980 670418**



## B REPAIRED

Musical Instrument Repairers

**Graham & Yvonne Ballard**  
The Music Studio 8 Thurlow Close  
Amesbury Nr. Salisbury  
Wiltshire SP47QG

**01980 625380  
07957 806401/2**

**www.brepaired.co.uk**

**GRAHAM BUCKLAND SERVICES**

*General building maintenance: plumbing,  
Carpentry, glazing, brickwork, etc  
Free quotes and reasonable rates*

*'Man with a Van' hire.  
Removals and House Clearance  
Undertaken*

**Tel: 01980 670870  
or 07831 889 666**

# Cape Cuisine

**ONLY THE BEST HOME-COOKED FOOD**

*Weddings, Anniversaries, Parties.  
Hot or Cold Buffets*

**For Quotations Phone:**

01980 590808

**Carpet & Upholstery Cleaners**

**Salisbury Amesbury Andover**  
and surrounding areas

**See our  
Website  
for latest  
offers!**

- \* Local reputable company
- \* Fast, efficient, no-nonsense service
- \* Inclusive fixed price quotations

For your **free**, no obligation quote call: **01980 621621**  
enquiries@cleanlivingmcc.com  
www.cleanlivingmcc.com

*"It's blue, it's  
blue!"*

**CLEANLIVING**

*Specialising in delighted clients*

Finalist in two categories at the  
Business Excellence Awards 2009

**PEST CONTROL SERVICE**

*RABBITS, RATS, MOLES  
WASPS, SQUIRRELS  
BIRD PROOFING*

CALL NIGEL

**01980 670804  
07854 828904**

**GDB TECHNICAL SERVICES LIMITED**

**Computer/IT support**  
**Small business and Home users**

Networking issues/installations  
PC Problems  
Tuition  
General IT advice/help  
Upgrades  
Data Recovery  
Service Support Options

Call **01980 623052** or visit  
**www.gdbts.com** to see if we can help.

**GRAHAM C BROWN & SON****Oil boiler maintenance**

**A well-established, friendly, local  
company, operating within the  
Salisbury Plain area.**

**01980 622737**

# Yoga, Pilates & Nia classes

Mon 10.00am	Pilates	Rushall Village Hall
Mon 11.15am	Yoga	Rushall Village Hall
Tues 7.30pm	Yoga	Upavon Village Hall
Weds 9.30am	Yoga	Rushall Village Hall
Thurs 9.30am	Nia	Rushall Village Hall (starts April 23 <sup>rd</sup> )
Thurs 11.15am	Yoga	Enford Village Hall (starts Sept)

**Nia** is a dance based fitness programme which promotes strength, stamina, flexibility, stress reduction, co-ordination, weight loss and much more. Nia is a free spirited and fun way to get fit. This is a drop-in class and is suitable for all levels of fitness.

**Yoga and Pilates** classes are booked on a termly basis.

Please call Debby Wilkinson on 07505 142285 or email [debby.wilkinson@virgin.net](mailto:debby.wilkinson@virgin.net) for further details.

Debby is a British Wheel of Yoga teacher and a course tutor for the British Wheel of Yoga teacher training programme. She also qualified with the Pilates Institute and is a Nia White Belt teacher.

## Avon Security

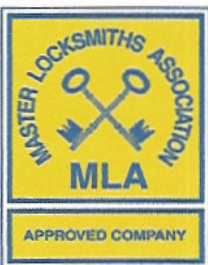
MASTER LOCKSMITHS

### Engraving Service Now Available

- > Brass
- > Plastics
- > Aluminium
- > Glass
- > Trophies
- > Gifts

### Free Advice & Quotations On Securing Your Property & Belongings

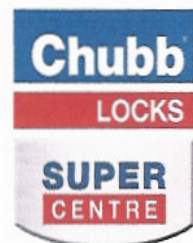
Key Cutting  
Locks Supplied & Fitted  
Access Control  
Safes  
PVCu Locks  
Master Key Systems  
Lock Repairs  
Door Furniture & Ironmongery  
Transponder Car Keys  
Keys To Code  
Watch Batteries & Straps  
Emergency Call Out Service



# 01980 626000

21, Salisbury Street, Amesbury, Wiltshire, SP4 7AW

[www.avonsecurity.net](http://www.avonsecurity.net)



## AEROBICS CLASSES

Phoenix Hall, Netheravon

**Monday 6.30pm Aerobics**  
**Thursday 6.30pm Fitness Yoga**  
**£3.50 per class or**  
**£6 for both in same week**

For more information about classes or details about personal training please call Selaine

on  
**07801 427358**

All standards welcome.  
 Please bring water and a towel with you

## TIM BUCKLAND BOILER MAINTENANCE

*FOR SERVICE AND BREAKDOWNS*

*Friendly and efficient service*  
*Wide stock of boiler spares in stock*

**VERY COMPETITIVE PRICES**

*Also AGAs and RAYBURNS serviced*

**Tel: 01980 625846**

## CAROL G DAYTON

*ITEC MGPP IHHT T.A.Th*

*Massage Therapist*  
*Indian Head Massage*  
*Reflexology*  
*Skenar Therapy*  
*Reiki*  
*Hopi Ear Candles*  
*Injury Treatment*  
*Waxing and Sugaring*

*For further information please call:*

**01980 653151**  
**or 07787 513563**

## M.W. WALSH



## TREE SERVICES

All aspects of tree surgery and hedge maintenance professionally undertaken

**HIGH QUALITY WORK**

**FULLY INSURED**

**PERSONAL SERVICE**

**FREE ESTIMATES**

**01980 670032**

• NO VAT •

*Whether it's a dazzling new colour, new textured or classic haircut, Louise and Stacie look forward to helping you achieve your stunning new look. Come along for your free consultation.*

*Appointments not always required.*

## **Tina's Hairdressers**

*High Street, Netheravon*

**Open** – Tuesday 9-5.30, Wednesday 9-2,  
 Thursday 1-7, Friday 9-6, Saturday 9.00-2

**Closed** – Sunday and Monday

**Tel: 01980 670628**

**New Range of Jewellery and Bags For Sale**

## **RGV ENGINEERING (NETHERAVON) Ltd**

**HIGH STREET**

**NETHERAVON**

**01980 670667**

**Local family business established over 30 years**

**SPECIALISTS IN PLUMBING,  
 HEATING AND ELECTRICAL  
 BOILER SERVICE AND  
 COMMISSIONING**

**CORGI \* OFTEC \* NICEIC \* ECA**

**VILLAGE COMMITTEES****PARISH COUNCIL**

<b>Chairman</b>	Ken Monk	<b>670540</b>
<b>Vice Chairman</b>	Tessa Manser	<b>670605</b>
<b>Parish Clerk</b>	Bill Vergette	<b>670132</b>
<b>Councillors</b>	Stan Bagwell	<b>670154</b>
	Norman Beardsley	<b>670860</b>
	Sara Everett	<b>670475</b>
	Michael Fay	<b>670553</b>
	Ann Merrett	<b>671231</b>
	Martin Webb	<b>670537</b>
	Jane Young	<b>670532</b>
	Frank Horsford	
	Adrian Orr	

**VILLAGE HALL**

<b>Chairman</b>	Judy D'Arcy-Irvine
<b>Vice Chairman</b>	
<b>Treasurer</b>	Alan Merrett
<b>Secretary</b>	Jeni Scott Dalglish
<b>Parish Council Rep</b>	Jane Young
<b>Football Club Rep</b>	Julian Lee
<b>PCC Rep</b>	Sarah Campbell
<b>Newsletter Rep</b>	Jacqui Elkins
<b>Booking Officer</b>	Judy D'Arcy-Irvine
<b>Property Officer</b>	David Spencer
<b>Grounds Officer</b>	Hamish Scott Dalglish

**PARISH HALL**

<b>Chairman</b>	Colin Pearse
<b>Vice Chairman</b>	Jacqui Elkins
<b>Treasurer</b>	Margaret Young
<b>Secretary</b>	Katrina Knight

**FOOTBALL CLUB**

<b>Chairman</b>	Julian Le
<b>Secretary</b>	Julian Lee
<b>Treasurer</b>	Ollie Staggs
<b>1<sup>st</sup> Team Manager</b>	Julian Lee
<b>2<sup>nd</sup> Team Manager</b>	Ian Lawes

**PAROCHIAL PARISH COUNCIL**

<b>Church Wardens</b>	Michael Hadfield John Poole Warren
<b>Treasurer</b>	Jonathan Walsh
<b>Secretary</b>	Sue Poole-Warren
<b>Council Members:</b>	Sarah Campbell Judy D'Arcy-Irvine Bob Hastie Frank Horsford John Manser Alan Merrett Henry Middleton

**THE VICAR**

Rev Colin Fox  
The Vicarage,  
Netheravon  
**01980 670326**

**CHISENBURY AND ENFORD SHOW**

<b>Chairman</b>	<b>In abeyance</b>
<b>Treasurer</b>	

**NEWSLETTER COMMITTEE**

<b>Chairman</b>	Tanya Becker
<b>Vice Chairman</b>	Linda Mundy
<b>Secretary</b>	Linda Mundy
<b>Treasurer</b>	Linda Mundy
<b>Advertising</b>	Peggy Waterkeyn
<b>Village Hall Rep</b>	Jacqui Elkins
<b>Parish Council Rep</b>	Jane Young Sylvia Latham Ann Houghton Gay Monk Clare Burge

**SCHOOL GOVERNORS**

<b>Chairman</b>	Colin Cruikshanks
<b>Clerk</b>	Sally Jones
<b>Enford Rep</b>	Andrew Marx

**NEIGHBOURHOOD WATCH COORDINATORS**

**Area Co-ordinator** - Steve Becker (steve@becker.globalnet.co.uk)

<b>Coombe Lane East (30-45)</b>	Jo Crossland
<b>Coombe Lane West (1-17)</b>	
<b>&amp; Fifield</b>	Angie Taylor Terry Mundy
<b>Coombe</b>	Ednah Beardsley Peggy Waterkeyn Not Filled
<b>New Town</b>	Not Filled
<b>Enford South (LongStreet)</b>	Venessa Murray Hill
<b>Enford Central</b>	
<b>(Enford Hill &amp; Hill Farm Road)</b>	Sarah Campbell
<b>New Buildings</b>	Stan Bagwell
<b>Compton</b>	Bruce & Lucy Waight
<b>West Chisenbury</b>	Derek Ford Rod Mason

<b>East Chisenbury (North)</b>	Stephen Calton
<b>East Chisenbury (Central)</b>	Vicky Orr
<b>East Chisenbury (South)</b>	Barry Chamberlain
<b>Enford North &amp; Littlecott)</b>	Not Filled
<b>Grants Road (North) (14-29)</b>	Ian Teasdale
<b>Paddocks Close</b>	Colin Pearse
<b>Water Lane (East)</b>	
<b>(East from Field View)</b>	Lyn Riche
<b>Water Lane (West) (1-10)</b>	John Powell
<b>Grant's Road (South)</b>	
<b>(1-13, 30-33)</b>	Not Filled

## For Your Diary May 2009

1 <sup>st</sup>	Friday	
2 <sup>nd</sup>	<b>Saturday</b>	
3 <sup>rd</sup>	<b>Sunday</b>	<b>Holy Communion, 9.00 am</b>
4 <sup>th</sup>	Monday	
5 <sup>th</sup>	Tuesday	Toy Library, Fighledean, 10.30am – 12.30pm/ Quiz, The Swan Inn, 9.30pm
6 <sup>th</sup>	Wednesday	
7 <sup>th</sup>	Thursday	Black Bin
8 <sup>th</sup>	Friday	
9 <sup>th</sup>	<b>Saturday</b>	<b>Avonvalley Lacemakers Coffee Morning Phoenix Hall, 10.00 am</b>
10 <sup>th</sup>	<b>Sunday</b>	<b>Benefice Service, Netheravon, 1030am/Car Boot Sale, Antelope Inn Car Park, 7.30am – 1.00pm/Victorain Day, Wilton Windmill, 1.00pm – 4.00pm/Start of Christian Aid Week</b>
11 <sup>th</sup>	Monday	
12 <sup>th</sup>	Tuesday	Toy Library, Pewsey Primary School, 10.30am – 11.30am/Quiz, The Swan Inn, 9.30pm
13 <sup>th</sup>	Wednesday	Village Hall Committee Meeting , 7.30pm
14 <sup>th</sup>	Thursday	Recycling
15 <sup>th</sup>	Friday	
16 <sup>th</sup>	<b>Saturday</b>	
17 <sup>th</sup>	<b>Sunday</b>	<b>Family Service, 1030 am/Rowdeford Garden Fair, Rowdeford School, 11.00am – 3.30 pm</b>
18 <sup>th</sup>	Monday	
19 <sup>th</sup>	Tuesday	Quiz, The Swan Inn, 9.30pm
20 <sup>th</sup>	Wednesday	Newsletter Meeting 7.30 pm
21 <sup>st</sup>	Thursday	Black Bin/Ascension Day
22 <sup>nd</sup>	Friday	
23 <sup>rd</sup>	<b>Saturday</b>	
24 <sup>th</sup>	<b>Sunday</b>	<b>Evensong, 6.00 pm</b>
25 <sup>th</sup>	Monday	Spring Bank Holiday
26 <sup>th</sup>	Tuesday	Toy Library, Rushall, 10.30am – 12.30pm /Quiz, The Swan Inn, 9.30pm
27 <sup>th</sup>	Wednesday	
28 <sup>th</sup>	Thursday	Recycling
29 <sup>th</sup>	Friday	
30 <sup>th</sup>	<b>Saturday</b>	
31 <sup>st</sup>	<b>Sunday</b>	