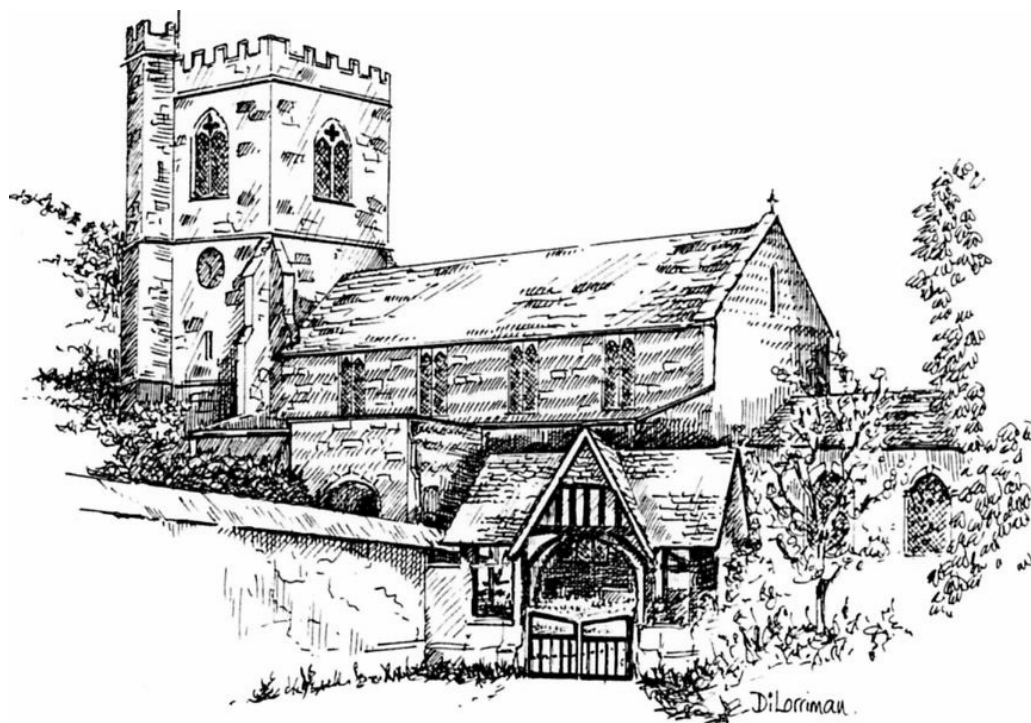




ENFORD NEWSLETTER



November 2008

ENFORD NEWSLETTER

CONTENTS

From The Committee/Vacancies/Mobile Library/Ladies' Christmas Dinner	1
Enford Bonfire & Fireworks	2
Enford Church Christmas Fair	3
Christmas Dinner	4
Village Hall Construction Progress	5
Community Consultation Update	6
All Saints Church /Baptism and Marriages	8
Highway News/Community Speedwatch	9
200 Club Draw /St Francis School Fair/Upavon Good Companions	10
For Sale	11
Messages/Enford Photos Sale/Humour	12
Figheldean Fair/Book Club/Plainwatch	13
SPTA News	14
Advertising	16
Village Committees	25
November Dates	26

DATE OF NEXT COMMITTEE MEETING

Wednesday 19th November

Please remember that there is no Newsletter in January so all articles for December and January need to be with the Committee by 19th November

All items for inclusion, whether they are handwritten, typed or via e-mail, ***MUST be submitted by the date of the meeting or they will not be published until the following month.*** These articles may be handed in to any Newsletter Committee member. Please send e-mails to tanya@becker.globalnet.co.uk

Enford Newsletter Committee reserves the right to reject or omit from publication any material that is considered by majority of Committee Members to be detrimental to any person or which is not in the best interest of the community as a whole. All letters and articles must be signed, but the Committee will withhold the name of the writer if this is requested at the time of sending it in.

FROM THE COMMITTEE

At the meeting on Wednesday 22nd October the Committee received a letter of resignation as secretary of the Enford Newsletter from Clare Burge. We would like to say a huge thank you to Clare who has given her time and support with good humour and great enthusiasm. Clare has agreed to continue as a member of the committee.

Secretary Needed

The Committee are looking for someone to take up the position as secretary for the Enford Newsletter. This would entail attending meetings once a month with a break in August and December, taking and writing up the minutes of the meetings. There are occasional other letters to be written.

If you feel that you would like to join us and help with the production of the Newsletter please contact Tanya 01980 670345 or tanya@becker.globalnet.co.uk or any other member of the committee.



Mobile Library – Revised Times from 14th October



Many thanks to Lesley Brown for passing this information to The Newsletter

Please note that as from 14th October 2008 the library will visit Water Lane fortnightly on a Tuesday 4.14 – 4.30.

The day and time has changed in the hope of attracting children after school

You Could Make A Difference

“Sailing Charity supporting disadvantaged young people seeks energetic volunteer management/secretarial help to assist busy fund raising office in Enford. Couple of mornings a week. A great opportunity to really make a difference to some young lives!

Please ring 01980 671645 if you can help!”

Ladies! -A Date for Your Diary

This year's Enford and Chisenbury Ladies
Christmas Dinner

will take place on

Wednesday 10th December 2008

at

The Swan Inn, Enford

See page 4 for menu and proforma

BONFIRE & FIREWORKS

SATURDAY 8th NOVEMBER

BONFIRE TO BE LIT AT

6.30pm

@

ENFORD PLAYING FIELD

ADULTS £5
CHILDREN £2



TICKETS SOLD ON THE DOOR —
PROCEEDS TO THE ENFORD VILLAGE HALL

SEE YOU THERE!



Bonfire Night



Wanted Wooden Pallets

Is anybody is able to donate pallets for the bonfire?

Contact Gareth 671195



*THE
ENFORD CHURCH
CHRISTMAS FAIR
SATURDAY 15th NOVEMBER 2008
DOORS OPEN AT 2 PM*



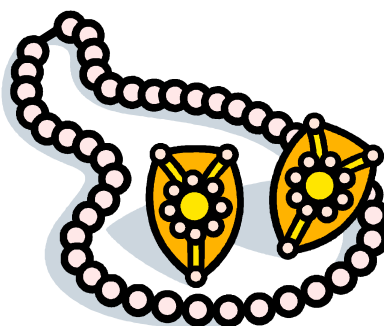
BOOKS



BOTTLE STALL



CAKES



RAFFLE

*CHRISTMAS TOMBOLA
AND
CRAFT & JEWELLERY STALL*



PLANTS



SOFT TOYS

*AND THERE WILL BE PLENTY MORE STALLS TO CHOOSE FROM
WHY NOT COME & JOIN US*

REFRESHMENTS AVAILABLE

During the next couple of weeks there will be a door to door collection for contributions towards the bottle stall



ENFORD AND CHISENBURY Ladies Christmas Dinner

**This year the gathering will be at The Swan Inn and will take place on the evening
Of**

Wednesday on 10th Dec 2008

7.30pm for 8.00pm

If you would like to attend please fill in the form below and return it to either

Tessa Manser, Chisenbury Priory, East Chisenbury, 01980 670605

or

Jane Young, Beckenried House, Long St, Enford, 01980 670532

Please include a deposit of £3.00 per person and return your form by the 1st Dec 2008

COST	£18.00	(£3.00 deposit <u>paid in advance</u> £15.00 paid on the day)

Name _____	Phone Number _____	
Address _____		

On Arrival Mulled wine or Orange Juice, Pepsi or Apple Juice

Main Courses

- Mixed Woodland Mushroom Stroganoff served with Steamed Jasmine Rice*
- Roast Turkey with Cranberry & Walnut Stuffing, Chipolata Wrapped in Smoked Bacon*
- Cod Fillet Roasted in Mature Cheddar Sauce*
- Crusted Neck Fillet of Lamb Baked with a Homemade Redcurrant & Rosemary Jam*

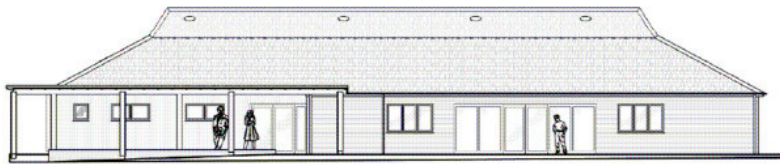
Puddings

- Brandied Christmas pudding with Fresh Cream*
- Baked Stuffed Apple With Amaretti Crunch & Custard*
- Home made Classic Bread & Butter Pudding with Vanilla Pod Ice Cream*
- Platter of Fine British Cheeses and Water Biscuits, Celery and Grapes*
- Tropical Fruit Salad of Figs, Pineapple., Kiwi, Satsumas & Grapes*

Tea or Coffee and Chocolates

**This is a special menu, both in price and content, created for
The Ladies Dinner and does not reflect the full menu of The Swan Inn
and has been approved by the Swan Inn**

BOOK EARLY LIMITED SPACE AVAILABLE



Enford CommYOUity Hall Opening June 2009

- We now need to fill it with your activities - for YOU; with YOU; by YOU
- We want to meet YOU if YOU:
 - Can help organise events
 - Provide help to open up, lock up, clean, take bookings, run tea stalls etc
 - Are already running a club or society and need a home
 - Want to start a new club or society
 - Want to organise a one-off event
- Contact: Gill Gould or Margaret Webb
 - Tel.: 01980 671462 or 01980 670537
 - E-mail: the.goulds@lineone.net or mandm.webb@tesco.net
- Or come along to Enford Church on Tuesday 18th November 7.00pm



ENFORD NEW VILLAGE HALL

The “Farewell to the Village Hall” party held in the Hall on 22nd August, attended by over 100 villagers, was a huge success and a fitting send-off for the Old Hall! As part of the Enford Community Consultation project, Anna and James had organised several pre-party “Meet and Make” sessions, which were well-attended, with the hand-created bunting and plenty of wall paintings decorating the old Hall - illustrating the range of activities that people wish to happen in the new Hall.

CONSTRUCTION PROGRESS TO DATE

Following the acceptance of Gaiger Bros. Ltd.’s tender bid in August, the contractors obtained possession of the site on 1st September 2008. We hope that those of you who have been to see the Hall are pleased with progress:

Foundations are laid, blockwork is up and beam floor is in. Internal drainage is complete. Brickwork is ongoing throughout end of October and November. There have been a couple of design changes so that the two halls are now interlocking, with easy access to the Kitchen from and between both halls.

Site meetings take place on a regular basis. They are attended by Trustees, Project Manager, Quantity Surveyor, Architect, Construction Co. Manager and Site Manager. Progress is discussed and no problems have been reported to date. The project is on time and within budget. Building control have visited and are satisfied with progress.

Never to stand still, the Committee are currently working on grant applications for funding the installation of a ground source heat pump, which will supply sustainable and cost-efficient energy to the building. We shall be producing a diary of the project progress, with pictures, which will be posted on the Enford section of the Wiltshire Village Halls Association website: www.wvha.org.uk and on the Enford page of Kennet Community Web: www.kennet-communityweb.com. We shall also provide a monthly update here in the Newsletter.

The build is scheduled to be completed in April 2009, with the New Village Hall opening in June 2009!

ACTIVITIES IN THE NEW VILLAGE HALL

Thank you to all of you who have come forward so far with ideas for groups or activities you either want to setup or attend, within the new hall. Interest has been expressed via Anna and James's Community Consultation project and directly, via word-of-mouth and telephone,. So far, we've seen a variety of interests, such as: a local history society, whist and bingo, gardening and produce, circuit training, Over 60's, Youth activities/club, cookery classes, film nights, a ladies 'slow jogging' club!

The new hall is for **everyone** within our community, so ***please come along to the meeting in the church on Tuesday 18th November at 7pm*** where you will be able to find out more and meet up with other people who are interested in the same activities as you. See you there!

Please feel free to contact either Gill Gould on 671462 the.goulds@lineone.net or Margaret Webb on 670537 mandm.webb@tesco.net

OUR ENFORD – COMMUNITY CONSULTATION PROJECT REPORT SUMMARY

Introduction

In April 2008 Anna Sexton and James Aldridge offered to work with the Enford Village Hall Committee and the people of Enford to deliver a series of consultation events. The consultations would investigate what activities and events residents would want to see happen in their new village hall. An initial project outline was put forward and agreed at the Village Hall Committee Meeting on 14th May 2008;

Purpose

- To ensure that people of all ages and backgrounds feel ownership of, and are able to access, the new village hall and associated activities
- To supply a report to the Village Hall Community and people of Enford including a clear idea of what activities are wanted to take place within the new village hall
- To create an exhibition of the work created – in the Parish and/or Church space once current hall is demolished September 08

Outcomes

- Support to create a successful series of funded new activities within the new village hall 2009/2010
- New partnerships and relationships are developed within the village
- Sense of community strengthened
- Balance of creative and sporting activities offered within the hall for long term sustainability

Kennet District Council funded the project, with PACT, Sustain The Plain and Solve suggested as possible future funders/partners.

Feedback

During the course of the project, suggestions were invited as to the activities which local people felt should take place in the new hall. Over 60 separate activities, ranging from Archery and Amateur Dramatics to the re-opening of the Youth Club were suggested. At the village hall party in August, twelve of the most popular suggestions were then offered to residents to sign up and express their interest in, with further feedback invited on cost and timing.

1. Art Workshops
2. Card Games (inc. Bridge)
3. Computer Classes/Internet Access
4. Cookery Classes
5. Dance Classes
6. Day Trips
7. Dog Walking/Training
8. Film Screenings
9. Fitness Classes
10. Music Sessions (Jamming, Drumming etc)
11. Parent & Baby/Toddler Groups
12. Photography Club

Some Comments Collected

May 2008	“Something of the old hall in the new” “We want something different”
June 2008	“I don’t know why you bother” “Most events are on Saturday when my husband works, I don’t enjoy coming on my own.” “Feel the sense of community lacking.” “We’ve got all sorts that live here.” “We don’t want to move, we like it and we need to feel more involved.”
July 2008	“I just feel so excited and enthused.” “There are issues with history around the committee and certain...personalities.” “There isn’t a community as such.”
August 2008	“The kids are the future of the village.” “We need more people to use the parish hall.” “Why spend money on the parish hall when the new one is being built?” “The new village hall will offer huge facilities. We have a brand new hall and we should all back it.” “It’s not going to be for the likes of us – we can’t afford to hire it.” “We need to overcome apathy in Enford on just about every subject.”

Recommendations

The following recommendations have been made by Anna and James, based on the data gathered during the consultation project;

1. A continuing programme of consultation and general climate of accessibility be embedded within the future management of the village hall, to encourage under-represented groups, to contribute to planning meetings.
2. Key to its success could be the willingness to draw in other local partner organisations to support its work (e.g. PACT Centre, Mobile Libraries, Voluntary Action Kennet, the MOD).
3. Continue to survey local people to find out what they think of the village hall as the project progresses and it reaches key milestones. Maintain the relationships that have been forged with, and between, participants on the consultation project and with those that have offered support in terms of time or practical support in running activities – e.g. the youth club, music classes, drawing classes, cooking classes.
4. Pilot Projects could be run in a few of the most popular activities – e.g. Arts activities; an application could be made to Kennet District Council via the Participatory Arts Workshop Scheme where an artist will lead project sessions at a heavily subsidised rate.
5. Maintain and further publicise the web blog as a community notice board/resource to run in parallel to the newsletter. (Over 250 people had viewed the site by October 2008).
6. Continue to work in partnership with The Parish Hall and All Saints Church, to maximize on each venue’s abilities to serve the local communities needs, in sustainable ways appropriate to each, supporting cross committee partnerships and community cohesion.
7. Visit other community and village halls to share ideas, and work together in ways that may be non-sustainable if you each act alone e.g. inter-village sports, card games, dances etc.
8. Link appropriate activities together to better meet participants needs and ensure viability through an existing audience e.g. Parent & Toddler groups with visits from mobile libraries or toy libraries, or a mobile crèche visiting to take place alongside creative/social activities for parents.

This is a summary of the full report, which has been given to the committee and other interested parties. If you would like to be emailed a PDF copy of the full report, please contact Anna or James. It is planned that the report will also be available to download via the project blog www.ourenford.co.uk and as paper copies via local community venues (pub, church etc).

Anna and James would like to thanks everyone that contributed to the consultation project with such enthusiasm and honesty.

Anna Sexton www.opentoarts.com 07941 655 856
James Aldridge www.creative-ecology.co.uk 07931 407 186



Whilst construction of the new Hall takes place, the contractors, Gaiger Bros., become responsible for all activity on the site. We have been asked to ensure that ALL VISITORS REPORT TO THE SITE MANAGER and do not enter the construction site at any time without prior permission. If you would like to see how the project is progressing, it can be easily viewed from the playing fields.



ALL SAINTS ENFORD CHURCH*Dear Friends*

As I write a group of us are in the middle of a Confirmation Course. We have two running this year; one with six teenagers and the other with six adults. The adult group are discussing the 'Bible'. It is an extraordinary book made up of a lot of smaller books. It's the book that everyone quotes from and most people respect it.

If you come to think of it, it's the source of much of our Law. our Faith and our art. It wasn't until the end of the 15th century in Italy that all art had to be religious.

It is a difficult book to read but it is a book worth reading. Some of it is a bit weird to the modern reader because a lot of the events took place a long, long time ago. Some people have found it life giving and full of hope, help and strength during dark times. I know that I have!

In parts we can glimpse some of God's story and tender heart. In it we are offered the promise of a God that loves us; His son Jesus. So, yes it is a book worth reading.

It is no ordinary book that you pick up and begin reading from cover to cover. No, you need help to get started to see how it all fits together.

If anyone is interested, do get in touch and just call to have a chat and talk to a friend. The hardest part is getting started.

With good Wishes

Colin Fox

**A Prayer**

Almighty God, we thank you for the gift of your holy word. May it be a lantern to our feet, a light to our paths and a strength to our lives.

Take us and use us to love and serve others in the power of the Holy Spirit, and in the name of your son, Jesus Christ Our Lord

Amen

**CHURCH SERVICES****November**

2 nd	0900	Holy Communion
9 th	1030	Remembrance Day, Holy Communion
16 th	1030	Family Communion
23 rd	1800	Evensong
30 th	1800	ADVENT CAROL SERVICE - DURRINGTON

December

7 th	0900	Holy Communion
14 th	1030	Benefice Service, Netheravon
18 th	1600	Crib Service
21 st	1030	Carol Service
25 th	1030	Christmas day Communion
28 th	1000	Benefice Service Durrington

CHURCH CLEANING ROTA**November**

7 th	Jean Kearney and Helen Hadfield
14 th	Sue Poole-Warren and Hilary Horsford
21 st	Amanda Marx and Paula de Chalus
28 th	Sarah Campbell

December

5 th	Tessa Manser
12 th	Gai Rickett
19 th	Lyn Rich & Fanny Surtees

From The Registers**Baptisms**

21st September
5th October

Jemima Handel
Olivia Ventham
Beatrice Yates
Hugo Winter



Hello Enford Parish Residents

ENFORD SPEED WATCH SCHEME.

Please see letter below from the Wiltshire Police. It is the information document that we have to supply to anyone of the questioning public about the Speed Watch Programme that we are now involved in.

As we have said before, this is not about spying on people, it is about endeavouring to bring down the speed of vehicles passing through our area of the A345. We are sure that residents would agree that speed seems to be everywhere now and if we can prevent just one accident from occurring with the possibility of saving someone's life or any serious injuries occurring in our area, then we will have achieved what we set out to do from the onset.

We have had two drivers who have questioned what we were doing and thought that it was an illegal thing to do. Both of these drivers seemed to be in a distressed state at the time of complaining. Both have been advised by us of the circumstances regarding why we have been carrying out the Speed Watch Scheme at Enford Hill and one of the drivers has been contacted by the Wiltshire Police as to their behaviour at the time towards us. This is a legal operation and it is going to benefit us all in the long term We trust that everyone agrees to what we are trying to achieve for the safety of all Enford Parish Residents and their families.



Chief Inspector Ian Copus Police HQ London Rd Devizes
Tel: 0845 408 7000

COMMUNITY SPEEDWATCH

Dear Sir/Madam

The person(s) you have approached are operating under the direction of the Wiltshire Police.

They are obliged to report to the police any threats, acts of intimidation or violence directed towards them.

They are also under instruction not to get involved in any disputes over their activity. You may raise any concerns you have, in writing, to the address above.

Community Speedwatch supports the police by monitoring the speed of vehicles through local communities.

Community Speedwatch does not enforce the law, but those identified as exceeding the speed limit can expect to receive an advisory letter from the police.

Community Speed watch is designed to support the police by making us all aware of the dangers of travelling too fast for the prevailing conditions. Sadly over 60 people died on roads in Wiltshire last year. Many more suffered serious and life changing injuries where excess speed, or the inappropriate use of speed, has been identified as a contributory factor.

Yours Faithfully,

Ian Copus
Chief Inspector
Head of Roads Policing

The A345 Road Surface and the increasing usage of Commercial Vehicles.

This issue is being discussed at the Pewsey Community Pilot Area Board meeting on the 20th October 2008 at Bouverie Hall Pewsey at 3pm.

The C32.

To date we have not received a reply from Wiltshire County Council Highways Department regarding the site meeting that took place at Enford Long Street on 8th August 2008 regarding what they said could be achieved for Coombe/ Enford and East Chisenbury. I will be asking at the next Parish Council Meeting that a letter be sent to Wiltshire County Council Highways from our Parish Clerk as to why we have not had a response from the meeting that took place..

I will keep you all informed of any updates.

Safe Motoring to All.

Stan. W. Bagwell. Enford Parish Council (Highways)
18th October 2008

ENFORD FOOTBALL CLUB

The winners of the 200 Club Draw are as follows:

200 Club Draw

OCTOBER

£50	109	Jay Flowers
£25	91	Julian Lee
£15	178	Jeni Scott-Dalgleish
£10	124	Carolie Young
£10	8	Dave Stewart
£10	7	Graham Swann

CHRISTMAS GIFT FAIR

**TUESDAY 25TH NOVEMBER 2008
10.30-4pm**

**ST FRANCIS SCHOOL, MARLBOROUGH ROAD,
PEWSEY, WILTSHIRE SN9 5NT**

Christmas presents for all the family

All welcome.

Entrance £2.00

In aid of Wiltshire Air Ambulance and School PTA

UPAVON GOOD COMPANIONS

Anyone over 50 is welcome to join the Upavon Good Companions

The last outing is n Tuesday 11th November to Poole

Non-members are welcome to help fill the coach

For further details please telephone

Mrs S Davis - 01980 630552



FOR SALE

Mahogany Bow Shape Chest of Drawers.
Good condition. (4 Drawers)

18" Deep
27 1/2" Wide
37 1/2" High

£125 ono

Square Mahogany occasional side table with Barley
Twist legs.

17" Deep
26" Wide
30" High

£60 ono

Attractive and unusual Octagonal occasional side
table. Could be used anywhere.
I think it is made from pear wood?

30" Deep
30" Wide
29" High

£150 ono

Farmhouse Style Pine Kitchen Table.

31" Wide
60" Length
30" High

£65 ono

4 Mahogany tall (Queen Anne) style legs pretty Dining room chairs.
Newly upholstered seats. Very good condition.

£150 ono

Please contact Lin Riche (01980) 670489



Silver Reed Electronic typewriter EX42/EX44 (made in 1982!)

I have the hand book and you can still buy ribbons for them on internet.
I have not got the power cable so cannot test it but it was hardly
ever used and has been covered for years!

It is free for anyone who wants it.

Phone: 01980 670404



BABY FURNITURE FOR SALE

Wooden cot and high chair
Both in excellent condition.

Very strongly made with high quality finish
Any reasonable offer will be accepted as a
donation to the Enford Church restoration fund

Please call 01980 670 481



FREE TO ANYONE WHO CAN TAKE IT AWAY!

Office credenza/side board in cherry wood
Three central draws with cupboards either side
4ft 9ins long x 2ft high x 1ft 10ins wide

Call: Nancy Hollendonner Tel: 07919 084315

MESSAGES FOR FRIENDS AND NEIGHBOURS

Get Well Soon

To
Lynne Stevens



We would like to wish
a very warm welcome
to all who have recently moved
into the Parish of Enford.
We hope that
you will find
many new friends and neighbours

Historic Photographs of Enford and Chisenbury

We have 50-60 of the photographs which were displayed at the Village Hall
Available on CD £5 each

Proceeds to the Newsletter

Call Gareth 671195



DOG LESSONS~ Make Life Less Ruff!



- When Humans Come Home, Always Run To Greet Them.
- Never Pass Up The Opportunity To Go For A Joyride.
- When It's In Your Best Interest - Practice Obedience.
- Let Others Know When They Have Invaded Your Territory.
- Take Naps And Stretch Before Rising.
- Run, Romp And Play Daily.
- Avoid Biting When A Simple Growl Will Do.
- On Warm Days, Stop To Lie On Your Back On The Grass.

- When You Are Happy, Dance And Wag Your Entire Body.
- No Matter How Often You Are Scolded, Don't Buy Into The Guilt Thing And Pout.....Run Right Back And Make Friends.
- Delight In The Simple Joy Of A Long Walk.
- Eat With Gusto And Enthusiasm - Stop When You Have Had Enough.
- Be Loyal, Never Pretend To Be Something You Are Not.
- If What You Want Lies Buried - Dig Until You Find It.
- When Someone Is Having A Bad Day, Be Silent, Sit Close By And Nuzzle Them Gently.





Stonchenge and Pewsey Vale



10th Christmas Fair

Figheldean Village Hall

SP4 8JR



Wednesday 19th November 2008

10.00 am to 3.00 pm

Entrance £2.50 (Children free)

Free Car Parking

Light Refreshments

Registered charity no. J089464

The Book Club



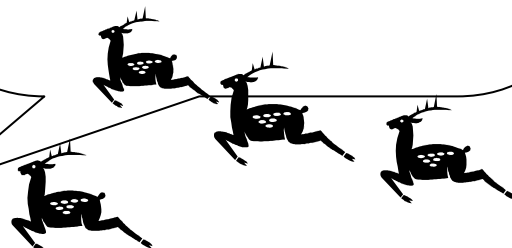
The Book Club meets once every two months to exchange opinions and review books that members have recommended. An excuse to meet over a glass of wine!!

Anyone interested, please ring Vic on 01980 670928

PLAINWATCH

PLAINWATCH is specifically designed to rapidly identify suspicious activity on the Plain: firstly and principally to identify criminal activity but secondly to deter such activity.

SPECIAL CONTACT NUMBER
01980 674700





**SALISBURY PLAIN TRAINING AREA
NEWS SHEET
November 2008**



Any general comment about military training should normally be made through Parish Councils to the Liaison Officer nominated by the appropriate Garrison Headquarters. Any specific complaint should be made in writing or if urgent by telephone as shown below:

**HEADQUARTERS SALISBURY PLAIN TRAINING AREA
Westdown Camp, Tilshead, Salisbury, Wiltshire SP3 4RS**

Telephone: Stonehenge (01980) – 620819

TRAINING: November will be an unusually routine month as far as training is concerned. The main event is a TESEX for 1 Coldstream Guard battle groups running from the 10 - 27 November. However, they are a light rolled battalion and their presence should not affect local parishes. Apart from the usual rash of exercises from the Land Warfare Centre at Warminster, including a Squadron level armoured exercise 10 – 14 November, there will be little in the way of armoured manoeuvre and relatively little artillery live firing with none at all from gun positions outside the centre.

ARTILLERY FIRING FROM SALISBURY PLAIN (WEST) (AS90)	NIL
LATE FIRING DAYS ON SALISBURY PLAIN (WEST) (AS90)	NIL
ANTI TANK FIRING DAYS ON SALIBURY PLAIN (WEST):	NIL
ARTILLERY LIVE FIRING DAYS FROM AREAS 7 & 8	NIL
ARTILLERY FIRING FROM SALISBURY PLAIN (EAST)	NIL
LATE FIRING FROM SALISBURY PLAIN (EAST)	NIL
LATE FIRING DAYS LARKHILL/WESTDOWN RANGES	4, 6, 8, 11, 13, 18, 20, 25, 27
NON FIRING DAYS LARKHILL/WESTDOWN DANGER AREA	1, 2, 15, 16, 22, 23, 29, 30
NON FIRING DAYS BULFORD RANGES	1, 2, 8, 9, 22, 23, 29, 30
NON FIRING DAYS ON WARMINSTER RANGES	1, 2, 15, 16, 22, 23, 29, 39

NOTE: Due to unforeseen changes there is always a possibility that there could be firing on other of the days listed. This is particularly so now operational training is being conducted to meet many and varied exigencies. The public should be careful to check that Red Flags are not flying before they enter the range. It is the time of the year when we change late night firing times. From March through to October the Tue, Thurs and Sat night firing times will revert back to 2330hrs.



HELICOPTER NIGHT FLYING : Night flying normally takes place Mondays to Thursdays inclusive over parts of SPTA. Some aircraft will show no lights but all will operate under strict area control.

AIR ACTIVITIES : Dates and timings given below are those listed at the time of printing but may be altered due to aircraft serviceability or weather conditions.

AIRCRAFT TRIALS:

Aircraft may conduct trials over Larkhill Range on each Wed and Fri from 1200 - 1700 hrs which could involve circuits to the East crossing the Avon Valley.

PARACHUTING. : Parachute dropping is scheduled to take place on EVERLEIGH and FOX COVERT DZs during normal working hours on most weekdays. Outside working hours and at weekends the dates and approximate times are:

<u>FOX COVERT DZ (C130)</u>	<u>PARACHUTING IMBER DZ (C130)</u>	<u>EVERLEIGH DZ (C130)</u>
04 1530 - 1630	NIL NOTIFIED	10 0800 - 0130 (11 th)
05 1045 - 0130 (6 th)		11 1015 - 2115
06 0915 - 1545	<u>KEEVIL (C130/C17)</u>	12 1100 - 2115
07 1915 - 2015	NIL NOTIFIED	17 1245 - 2300
13 0900 - 2115		18 0945 - 2130
14 1030 - 0130(17 th)		27 1730 - 1830
17 0745 - 1645		
18 0745 - 1945		
19 0745 - 2145		
20 1945 - 0130(21 st)		
21 1325 - 2025		
28 0915 - 2215		



STRIP LANDINGS

<u>DEPTFORD DOWN (C130)</u>	<u>UPAVON (C130)</u>	<u>KEEVIL</u>
05 1430- 1630	NIL NOTIFIED	03 1415 - 1645
06 1300 - 1500		04 1930 - 2130
		14 0745 - 1015
		17 1415 - 1615
		24 1000 - 2145
		25 1945 - 2045
		26 0815 - 2245

FAST JET ACTIVITY (FGA)

<u>SPTA 'W'</u>	<u>SPTA 'E'</u>	<u>SPTA 'C'</u>
19 1900 - 2030	24 0830 - 1030	19 1900 - 2030
21 0830 - 1000	27 0830 - 1030	21 0830 - 1000
24 0830 - 1030		24 0830 - 1030
25 2130 - 2300		25 2130 - 2300
27 0830 - 1000		27 0830 - 1000

FIXED WING ACTIVITY NOVEMBER 2008

All times are local. Activity is subject to change, timings or additional sorties may be added at short-notice and will not be notified further.

MINISTRY OF DEFENCE - DTE SP (WEST) IMBER RANGES

1. Notice is given that only the roads from:
 - a. Warminster to Gore Cross via Imber, and
 - b. Bratton to Heytesbury via Imber
 Will be open to the public from 1800 (0600pm) Friday 19 December 2008 through to 18.00 hours (06.00pm) Sunday 4th January 2009
2. Please bear in mind that **ONLY METALLED ROADS** will be opened, all other tracks, stone tracks and Southern Range Road and IMBER VILLAGE remain closed (Out of Bounds) in accordance with the Imber Ranges Bylaws. Any movement off the aforesaid roads on the Imber Ranges is forbidden, trespassers are liable to prosecution.
3. Red Flags are only flown at the vedette post when live firing is taking place on the ranges. The absence of red flags does NOT imply that the roads are automatically opened to the public, times for which are notified in the Press and displayed on the entrance notice boards.
4. The roads identified above are not maintained to public road standards, if traversing the training area drivers should do so with extreme caution.



COMPLAINTS MAY BE TELEPHONED THROUGH TO
STONEHENGE (01980) 620819 AT ANY TIME



BUS SERVICES

**SERVICE 210
ENFORD TO DEVIZES
THURSDAYS AND SATURDAYS**

OUT

Enford Bus Shelter	09:31
Enford Corner	09:34
East Chisenbury	09:38
Upavon Avon Square	09:42
Upavon, Ship Inn	09:45
Devizes Market Place	10:24

RETURN

Devizes Market Place	12:30
Upavon, Ship Inn	13:07
Upavon Avon Square	13:10
East Chisenbury	13:13
Enford Corner	13:17
Enford Bus Shelter	13:18

Please Note!

**Return Fares from Enford, East Chisenbury or Upavon to Devizes
£6.00 Adult, £2.25 Child.**

**With a valid Wiltshire Fare pass anyone over 60
can now travel FREE ! (instead of half-fare) on this service.**

Advertising

D Taylor

Building Services Bricklayer & General Builder

**All Building Works undertaken
Including Extensions, Garden Walls, Patios,
Roof Repairs, Plastering
Floor & Wall Tiling etc**

**01980 671078
Mobile No: 07719916854**

AGRICENTRE

Now stocking Frontline for cats and dogs
at an unrivalled price
Excellent products at an excellent price from
well-known horse wormers
Electrical fencing
Complete range of Briswim pool chemicals

FREE HOME DELIVERY!

Contact: Justin Young, A.M.T.R.A.

07850 184111
01722 320316

**WORRIED ABOUT INLAND REVENUE
SELF-ASSESSMENT?**

Why not talk to a commercially-experienced
Chartered Accountant? Local help is at hand.

MERPEN ACCOUNTING

Accountancy & Small Business Advisory
Management

*Hands-on help *No job too small *Even part-time,
money-making hobbies *Initial discussions free of
charge *Further work done professionally for probably
the lowest fees around

Alan Merrett FCA

Eagle Lodge, East Chisenbury, Pewsey, SN9 6AQ

Tel: **01980 671441**

www.pewsey-uk.co.uk/merpen-accounting.html

**OIL TANKS**

YOUR LOCAL OIL TANK REPLACEMENT SPECIALISTS

SOUTHERN
TANK
SERVICES LTD

- COMPETITIVE PRICES
- DOMESTIC & COMMERCIAL
- FULL REPLACEMENT SERVICE
- FRIENDLY & RELIABLE
- FREE QUOTATIONS

TELEPHONE **01985 248 555**

www.tankservices.co.uk Deptford Farm, Wyltye, Wiltshire, BA12 0QQ

Pet Care Services

Pet Sitting
Home Sitting
Pet Taxi
Dog Walking

Mobile Pet Grooming

Warm Water Hydrobath
Full Grooming
Nail Clipping

**Comfy
Critters**

Established in February 2005 and based from
our own village of Enford, Comfy Critters
aims to bring piece of mind to pet owners in
our rural communities

Mob: 07789 378413

Tel: 01980 670458

www.comfycritters.co.uk

Member of National
Association of Pet
Sitters

**Avon Valley Chauffeur
Service**

- ❖ Airports & stations
- ❖ Hotels & restaurants
- ❖ Schools & colleges
- ❖ Business appointments
- ❖ Hospitals & doctors
- ❖ Special occasions



01980 630094

avc@avonvalleychauffeurs.co.uk

RCM

Plumbing & Heating

- Kitchens • Heating systems • Competitive rates • General maintenance • Bathroom shower pumps • New and replacement bathrooms • Tiling • New and replacement cylinders (vented and unvented) • Fully Insured

24 hour callout

Tel: Russell McBride 07758 228 743

Carpet Clean

Ricky Flint

Est 1997

Friendly Local Service

Carpetclean@btinternet.com

Great Bedwyn 07799 215837

The Swan Inn at Enford

Open for Lunch and Dinner every day

**Try our Quiz Night every Tuesday! Starts 9.30pm £1.00 entry per person
(teams of up to 4)**

Great for Sunday Lunch

A choice of Roast Sirloin of Beef, Leg of Lamb or Loin of Pork

Plus



Specials every Sunday

Outside Catering can also be arranged on request

Call Clare or Paul on 01980 670338 to book

Email: Pauljacson5@btconnect.com

Full Menus on our website: home2btconnect.com/theswaninnatenford.co.uk

M NASH & P WILKINS

*ALL LANDSCAPING WORK UNDERTAKEN
FENCING*PATIOS*PATHS*PONDS*BRICKWORK
HEDGECUTTING*GARDEN CLEARANCE*

*Tel: MIKE 01380 840767
Mobile:07977 950654*

*Tel: PAUL 01380 840763
Mobile: 07970 557002*

**CAN I HELP?**

**CONSERVATORY CLEANING
WINDOW CLEANING
&
GENERAL MAINTENANCE**

Using state of the art ladder systems I can reach every part of your conservatory. I also carry out normal window cleaning service and can turn my hand to most general maintenance tasks in the home and garden

All work is guaranteed.
For free quote
and written estimate if requested
Contact Peter 07875 238730

*MODERN & TRADITIONALLY
DESIGNED MEMORIALS*

M J SLY

Monumental Stonemason

*New Memorials, Additional Inscriptions
Restorations, Free Home Visits
Free Brochure*

Marlborough (01672) 516797

Email: martin@mjsly.co.uk

Website: www.mjsly.co.uk

*Workshop & Showroom at Pelham Court,
London Road,
Marlborough, Wiltshire*

ELSTON VETERINARY CLINIC

ELSTON LANE, SHREWTON

Dr. Enid Frantilla, DVM MRCVS

Small Animal Medicine and Surgery

*Providing high quality pet healthcare
and a caring, friendly professional service
HELPING YOU TO HELP YOUR PETS!!*

Consultations by appointment, Mon-Sat

*For appointments or enquiries, and
24 HOUR EMERGENCY SERVICE*

01980 621999

ROD SMITH

*The Garage
Netheravon*

UNIPART CAR CARE CENTRE

*MOT Tests
Car Repairs & Servicing*

*Now able to service air conditioning units
Batteries, Exhausts & Tyres at Competitive Prices
Handy Gas*

Tel: Stonehenge (01980) 670348

OSCAR

Your Local Pet Food Supplier



**Quality Pet Food
Delivered FREE to your Door**

- Healthy Food for contented pets
- **FREE** Nutritional and Behavioural Advice
- **FREE** samples to try before you buy
- Full range of Pet Health Care Products and Treats
- Variety of Small Animal and Bird Foods

Oscar foods are GM monitored and not tested on animals.

**Contact your Local Nutritional Advisor
Jo Stow • T 0845 201 1272 • M 07767 784550**



www.oscar.co.uk

FOR A HAPPIER HEALTHIER AND LONGER LIFE

DJ Landscaping

**No Job Too Big Or Small
Just call us we do it all**

- Lawn Mowing
- General Tidying
- Hedge Cutting
- Turfing
- Fencing
- Ponds
- Paths
- Brick Works
- Leaf Collection
- Pruning
- Weeding
- Decking
- Patios
- Pergolas
- Driveways

Free estimates, Hourly Rates
Regular appointments are available

Call the company you can trust

Tel: 01980 846740

Mob: 07717 831907

BEAUTY THERAPY • AROMATHERAPY
REFLEXOLOGY • INDIAN HEAD MASSAGE
Facials • Manicures • Pedicures
Massage • Waxing
Bridal Makeup

Gift
Vouchers
available

Make-up
Advice &
Lessons



Jennie Aird Gauntlett

ITEC BABTAC MIFHB MIGHT IHHHT

*A full complement of beauty treatments for Face and Body
To make an appointment call 01672 851445*

“ 14 years in the area ”

CHINA RESTORATION

Specialist in Antiques & Figurines

24 Years Experience

Workshops Arranged Throughout The Year

Tel: 01672 851445

Web: crackedpots.co.uk

G. B. Chamberlain

Flooring Specialist

Specialising in Ceramic
Floors and Walls

Tel: 07971 182752

24 hour answer service

OIL FIRED BOILERS

**For prompt reliable –
SERVICING
REPAIRS
COMMISSIONING**

Call Tim Walsh

**Tel. 01980 652803
Mobile 07919603884**

FRED MONRO

Contemporary Interiors

**Bespoke carpentry
Made-to-measure kitchens and furniture
Affordable prices
Free quotations**

**Call: 07717 416423
Email: fred@fredmonro.co.uk
www.fredmonro.co.uk**

Made-to-measure kitchens and furniture



*******B J LONG*******

(**AKA BERTIE**)

Live music from the 1950s 60s 70s

FOR BOOKINGS

01980 670767

0772 4104106

E-Mail: b jlong@hotmail.co.uk



B REPAIRED

Musical Instrument Repairers

Graham & Yvonne Ballard
The Music Studio 8 Thurlow Close
Amesbury Nr. Salisbury
Wiltshire SP47QG

**01980 625380
07957 806401/2**

www.brepaired.co.uk

GRAHAM BUCKLAND SERVICES

*General building maintenance: plumbing,
Carpentry, glazing, brickwork, etc
Free quotes and reasonable rates*

*'Man with a Van' hire.
Removals and House Clearance
Undertaken*

**Tel: 01980 670870
or 07831 889 666**

Cape Cuisine

ONLY THE BEST HOME-COOKED FOOD

*Weddings, Anniversaries, Parties.
Hot or Cold Buffets*

For Quotations Phone:

01980 590808

CLEAN LIVING

You have probably seen our cleaning van around the village as we operate a Carpet & Upholstery cleaning company- CleanLiving. Some of you have already used our service and have been amazed at the results we achieved. Stain removal is our speciality. Steve is more than happy to help anyone with a cleaning problem on carpets & upholstery. Of course we cannot guarantee the removal of every stain, but we are confident that, with our specialist training, if we cannot remove it then no one else will either.

*As an introduction to our services we are offering to **clean your hall & stairs FREE** when you have your lounge carpet cleaned and Stain Protected.*

*So call Vanessa my wife and business partner for your **FREE** survey.*

***www.cleanlivingmcc.com
Tel: 01980 621621***

PEST CONTROL SERVICE

**RABBITS, RATS, MOLES
WASPS, SQUIRRELS
BIRD PROOFING**

CALL NIGEL

**01980 670804
07854 828904**

GDB TECHNICAL SERVICES LIMITED

**Computer/IT support
Small business and Home users**

Networking issues/installations
PC Problems
Tuition
General IT advice/help
Upgrades
Data Recovery
Service Support Options

**Call 01980 623052 or visit
www.gdbts.com to see if we can help.**

GRAHAM C BROWN & SON**Oil boiler maintenance**

**A well-established, friendly, local
company, operating within the
Salisbury Plain area.**

01980 622737

PBL TANK INSTALLATIONS

OFTEC REGISTERED COMPANY

12A Pewsey Road, Upavon, Wiltshire, SN9 6DT

Tel: 01980 630700

Mobile: 07717 574477

**Domestic & Commercial Oil Tank Installers
Friendly, Quick & Efficient Service**

**Please Phone Paul for Free Quotes & Advice
Competitive Prices**

Avon Security

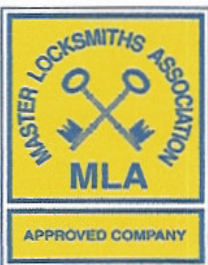
MASTER LOCKSMITHS

**Engraving Service
Now Available**

- > Brass
- > Plastics
- > Aluminium
- > Glass
- > Trophies
- > Gifts

**Free Advice &
Quotations
On Securing
Your Property
& Belongings**

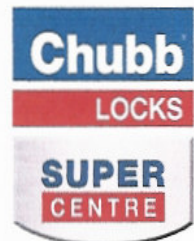
Key Cutting
Locks Supplied & Fitted
Access Control
Safes
PVCu Locks
Master Key Systems
Lock Repairs
Door Furniture & Ironmongery
Transponder Car Keys
Keys To Code
Watch Batteries & Straps
Emergency Call Out Service



01980 626000

21, Salisbury Street, Amesbury, Wiltshire, SP4 7AW

www.avonsecurity.net



AEROBICS CLASSES

Phoenix Hall, Netheravon

Monday 6.30pm Aerobics
Thursday 6.30pm Fitness Yoga
£3.50 per class or
£6 for both in same week

For more information about classes or details about personal training please call Selaine

on
07801 427358

All standards welcome.
 Please bring water and a towel with you

TIM BUCKLAND BOILER MAINTENANCE

FOR SERVICE AND BREAKDOWNS

Friendly and efficient service
Wide stock of boiler spares in stock

VERY COMPETITIVE PRICES

Also AGAs and RAYBURNS serviced

Tel: 01980 625846

CAROL G DAYTON

ITEC MGPP IHHT T.A.Th

Massage Therapist
Indian Head Massage
Reflexology
Skenar Therapy
Reiki
Hopi Ear Candles
Injury Treatment
Waxing and Sugaring

For further information please call:

01980 653151
or 07787 513563

M.W. WALSH



TREE SERVICES

All aspects of tree surgery and hedge maintenance professionally undertaken

HIGH QUALITY WORK

FULLY INSURED

PERSONAL SERVICE

FREE ESTIMATES

01980 670032

• NO VAT •

Whether it's a dazzling new colour, new textured or classic haircut, Louise and Stacie look forward to helping you achieve your stunning new look. Come along for your free consultation.

Appointments not always required.

Tina's Hairdressers

High Street, Netheravon

Open – Tuesday 9-5.30, Wednesday 9-2,
 Thursday 1-7, Friday 9-6, Saturday 9.00-2

Closed – Sunday and Monday

Tel: 01980 670628

RGV ENGINEERING (NETHERAVON) Ltd

HIGH STREET

NETHERAVON

01980 670667

Local family business established over 30 years

**SPECIALISTS IN PLUMBING,
 HEATING AND ELECTRICAL
 BOILER SERVICE AND
 COMMISSIONING**

CORGI * OFTEC * NICEIC * ECA

VILLAGE COMMITTEES

PARISH COUNCIL

Chairman	Ken Monk	670540
Vice Chairman	Tessa Manser	670605
Parish Clerk	Bill Vergette	670132
Councillors	Stan Bagwell	670154
	Norman Beardsley	670860
	Sara Everett	670475
	Michael Fay	670553
	Ann Merrett	671231
	Rosie Taylor	671078
	Jane Young	670532
	Frank Horsford	
	Adrian Orr	

VILLAGE HALL

Chairman	Judy D'Arcy-Irvine
Vice Chairman	
Treasurer	Alan Merrett
Secretary	Jeni Scott Dalglish
Parish Council Rep	Jane Young
Football Club Rep	Julian Lee
PCC Rep	Sarah Campbell
Newsletter Rep	Jacqui Elkins
Booking Officer	Judy D'Arcy-Irvine
Property Officer	David Spencer
Grounds Officer	Hamish Scott Dalglish

PARISH HALL

Chairman	Colin Pearse
Vice Chairman	Jacqui Elkins
Treasurer	Margaret Young
Secretary	Katrina Knight

FOOTBALL CLUB

Chairman	Julian Le
Secretary	Julian Lee
Treasurer	Ollie Staggs
1st Team Manager	Julian Lee
2nd Team Manager	Ian Lawes

PAROCHIAL PARISH COUNCIL

Church Wardens	Michael Hadfield John Poole Warren
Treasurer	Jonathan Walsh
Secretary	Sue Poole-Warren
Council Members:	Sarah Campbell Judy D'Arcy-Irvine Bob Hastie Frank Horsford John Manser Alan Merrett Henry Middleton

THE VICAR

Rev Colin Fox
The Vicarage,
Netheravon
01980 670326

CHISENBURY AND ENFORD SHOW

Chairman	In abeyance
Treasurer	

NEWSLETTER COMMITTEE

Chairman	Tanya Becker
Vice Chairman	Linda Mundy
Secretary	Vacant
Treasurer	Linda Mundy
Advertising	Peggy Waterkeyn
Village Hall Rep	Jacqui Elkins
Parish Council Rep	Jane Young Sylvia Latham Ann Houghton Gay Monk Clare Burge

SCHOOL GOVERNORS

Chairman	Colin Cruikshanks
Clerk	Sally Jones
Enford Rep	Andrew Marx

NEIGHBOURHOOD WATCH COORDINATORS

Area Co-ordinator - Steve Becker (steve@becker.globalnet.co.uk)

Coombe Lane East (30-45)	Jo Crossland
Coombe Lane West (1-17)	
& Fifield	Angie Taylor Terry Mundy
Coombe	Ednah Beardsley Peggy Waterkeyn Not Filled
New Town	Not Filled
Enford South (LongStreet)	Venessa Murray Hill
Enford Central	
(Enford Hill & Hill Farm Road)	Sarah Campbell
New Buildings	Stan Bagwell
Compton	Bruce & Lucy Waight
West Chisenbury	Derek Ford Rod Mason

East Chisenbury (North)	Stephen Calton
East Chisenbury (Central)	Vicky Orr
East Chisenbury (South)	Barry Chamberlain
Enford North & Littlecott)	Not Filled
Grants Road (North) (14-29)	Ian Teasdale
Paddocks Close	Colin Pearse
Water Lane (East)	
(East from Field View)	Lyn Riche
Water Lane (West) (1-10)	John Powell
Grant's Road (South)	
(1-13, 30-33)	Not Filled

For Your Diary November 2008

1 st	Saturday	
2 nd	Sunday	Holy Communion, 9.00am
3 rd	Monday	
4 th	Tuesday	Quiz, The Swan Inn, 9.30pm
5 th	Wednesday	
6 th	Thursday	Black Bin
7 th	Friday	
8 th	Saturday	Bonfire & Fireworks, 6.30pm, Enford Playing Field
9 th	Sunday	Remembrance Day, Holy Communion, 10.30am
10 th	Monday	
11 th	Tuesday	Good Companions Outing to Poole/Quiz, The Swan Inn, 9.30pm
12 th	Wednesday	
13 th	Thursday	Recycling
14 th	Friday	
15 th	Saturday	Enford Church Christmas Fair, 2.00pm
16 th	Sunday	Family Communion, 10.30am
17 th	Monday	
18 th	Tuesday	New Village Hall Activities Meeting, 7.00pm, All Saints Church/Quiz, The Swan Inn, 9.30pm
19 th	Wednesday	10 th Christmas Fair, Figheldean Village Hall, 10am – 3pm/Newsletter Meeting, 7.30pm
20 th	Thursday	Black Bin
21 st	Friday	
22 nd	Saturday	
23 rd	Sunday	Evensong, 6.00pm
24 th	Monday	
25 th	Tuesday	Christmas Gift Fair, St Francis School, Pewsey, 10.30 – 4pm, /Quiz, The Swan Inn, 9.30pm
26 th	Wednesday	
27 th	Thursday	Recycling
28 th	Friday	
29 th	Saturday	
30 th	Sunday	Advent Carol Service, 6.00pm, DURRINGTON